

## 5.7 UNINCORPORATED TOOELE COUNTY

### 5.7.2 Unincorporated Tooele County - Future Development Risk

### 5.7.3 Unincorporated Tooele County - Hazards

1. Alluvial Fans
2. Avalanche Terrain
3. Debris Flow
4. Earthquake
5. Engineering Problem Soils
6. Erosion
7. Flood
8. Landslide
9. Steep Slope
10. Wildfire
11. Wildlife / Auto

### 5.7.4 Unincorporated Tooele County- Risk Assessment Results

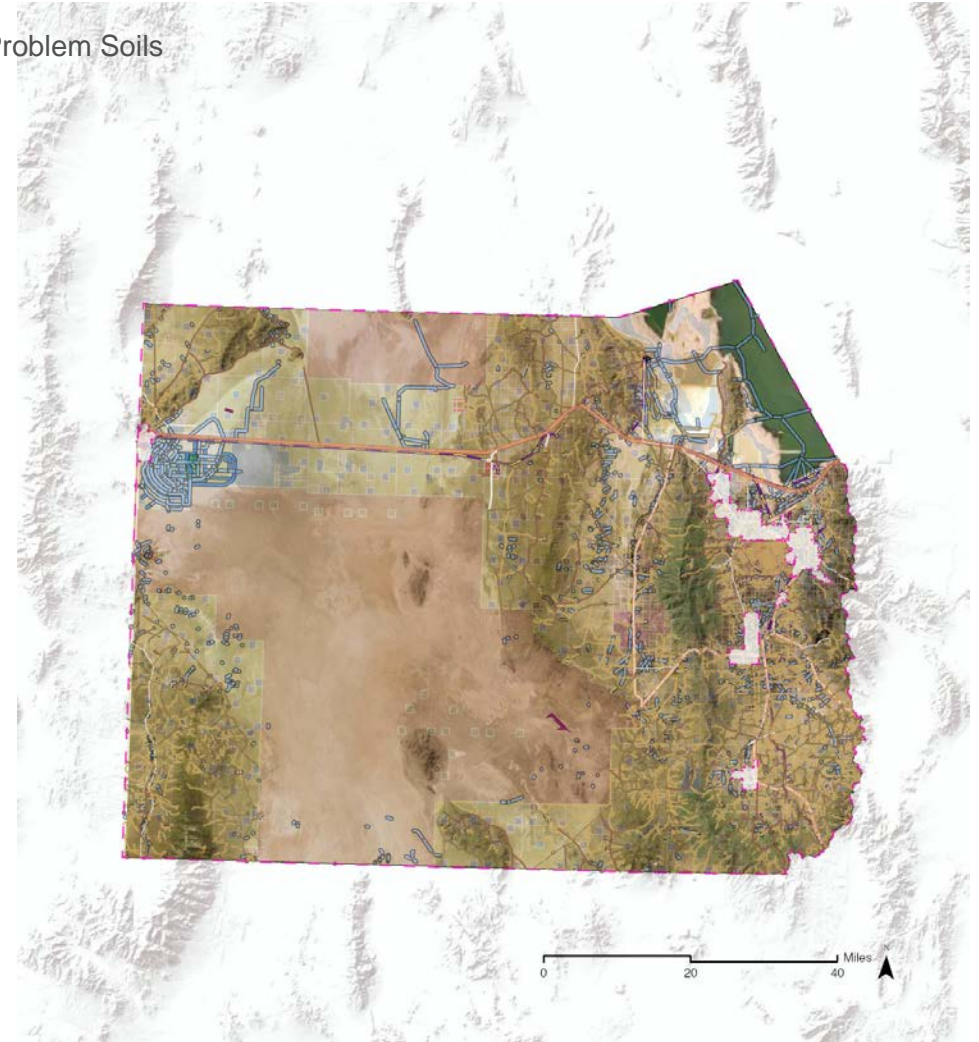
1. Building Footprints - Structures
2. Point Data - Features
3. Parcel Data
4. Line Data
5. Area Data

### 5.7.5 Unincorporated Tooele County- Mitigation Strategies

#### 1. Stansbury Park

### RISK SUMMARY

- Alluvial Fans
- Avalanche Terrain
- Debris Flow
- Earthquake
- Engineering Problem Soils
- Erosion
- Flood
- Landslide
- Steep Slope
- Wildfire
- Wildlife / Auto



*Aerial map of Tooele County*

## 5.7.2 UNINCORPORATED TOOELE COUNTY - FUTURE DEVELOPMENT RISK

### FUTURE DEVELOPMENT RISK

#### Erda

New Development is a proposed for around 1,000 homes on the east side of Erda between Lake Point and Pine Canyon. Additional developments have been proposed in the northwest side of Erda around the Mid Valley Highway. Each of these homes could potentially be affected by wildfire, landslides, and geologic hazards.

#### Lake Point

Two proposed developments are planned for this area. The east side of Erda between Lake Point and Pine Canyon is the first. The second is the north east side of the area which are in areas which are prone to be affected by flooding wildfire, landslides, and geologic hazards.

#### Dugway

No concerns involving potential future development within Dugway were reported by community representatives.

#### Ophir

#### Goshute

Future Development No concerns involving potential future development within the Goshute Reservation were reported by community representatives.

#### Pine Canyon

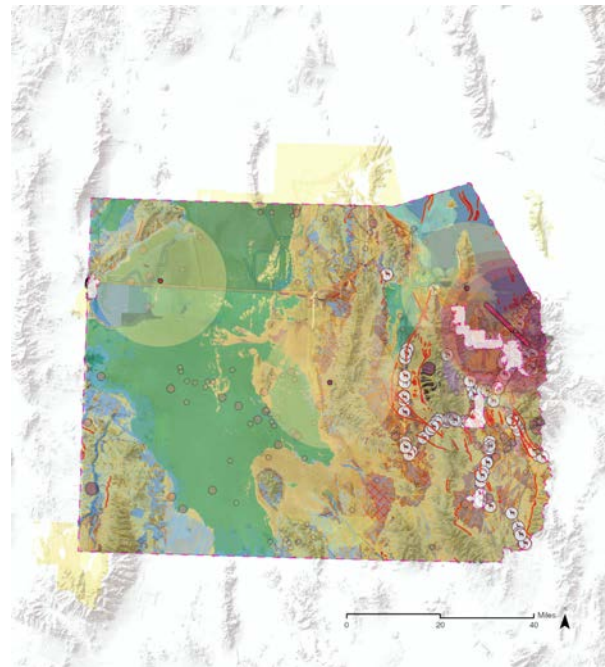
Currently, there is a proposed development of around 1,000 homes on the east side of Erda between Lake Point and Pine Canyon. These homes could potentially be affected by wildfire, landslides, and geologic hazards.

#### Skull Valley

No concerns involving potential future development within Skull Valley were reported by community representatives.

#### Stansbury Park

There is a new development planned in two areas of Stansbury Park. South of Bates Canyon and west of SR 36 in the Stansbury Park area. The second area is the Northwest side of Stansbury, specifically northwest of Village Blvd. This new development could potentially be susceptible to wildfire hazards, soil liquefaction during an earthquake, a high-water table and severe weather events.



#### HAZTYPE / ACRES

<b>Alluvial Fan</b>	<b>6,685</b>
<b>AvalancheTerrain</b>	<b>233,042</b>
<b>Debris Flow</b>	<b>77,247</b>
<b>Engineering Problem Soils</b>	<b>344,194</b>
<b>DwellingsWithoutBasements</b>	<b>3,493,331</b>
<b>DwellingsWithBasements</b>	<b>3,493,331</b>
<b>Erosion Off Road Trail</b>	<b>707,548</b>
<b>Erosion Road Trail</b>	<b>1,513,044</b>
<b>Fault Hazard Zone</b>	<b>121,314</b>
<b>FEMA Flood Zone</b>	<b>149</b>
<b>Flood Dam Inundation</b>	<b>26,325</b>
<b>Flood Great Salt Lake</b>	<b>263,587</b>
<b>Flood Soils Purdue</b>	<b>164,050</b>
<b>Flood USU Valley Bottom</b>	<b>10,775</b>
<b>Flood Wetland &amp; Riparian</b>	<b>1,710,231</b>
<b>Landslide</b>	<b>5,636</b>
<b>Liquefaction</b>	<b>63,246</b>
<b>Steep Slope</b>	<b>491,633</b>
<b>Wildfire Hazard Potential</b>	<b>1,358,999</b>
<b>Wildlife Auto</b>	<b>252</b>

## 5.7.2 UNICORPORATED TOOELE COUNTY - FUTURE DEVELOPMENT RISK

UNICORPORTATED TOOELE COUNTY - Risk SUMMARY

Hazard Type	Probability of Occurrence	Population Impact	Property Impact	Economic Impact	Future Development Impact	Overall Risk
Alluvial Fans	MODERATE	LOW	MODERATE	LOW	HIGH	LOW
Avalanche Terrain	HIGH	LOW	LOW	LOW	LOW	LOW
Debris Flow	MODERATE	LOW	MODERATE	MODERATE	MODERATE	MODERATE
Earthquake	LOW	HIGH	HIGH	HIGH	LOW	HIGH
Engineering Problem Soils	MODERATE	LOW	MODERATE	MODERATE	MODERATE	MODERATE
Erosion	HIGH	LOW	HIGH	HIGH	MODERATE	HIGH
Flood	HIGH	MODERATE	HIGH	HIGH	MODERATE	HIGH
Landslide	MODERATE	LOW	HIGH	LOW	LOW	LOW
Steep Slope	HIGH	LOW	LOW	LOW	LOW	LOW
Wildfire	HIGH	HIGH	HIGH	HIGH	MODERATE	HIGH
Wildlife / Auto	HIGH	MODERATE	MODERATE	MODERATE	LOW	LOW

### ALLUVIAL FAN

6,685

Alluvial fans in the county are located mostly in the eastern part of the county in the benches above Tooele City, Stockton, and Tooele Army Depot (South). Potential risks are high, particularly for residential areas east of Stansbury, north and east of Tooele, and north of Stockton. Since data is limited, there may also be other areas at risk not included in this analysis. Potential losses include 3 businesses, 1 church, 220 homes, 7 schools, 1 grocery store, 4 churches, and 80 miles of roads.



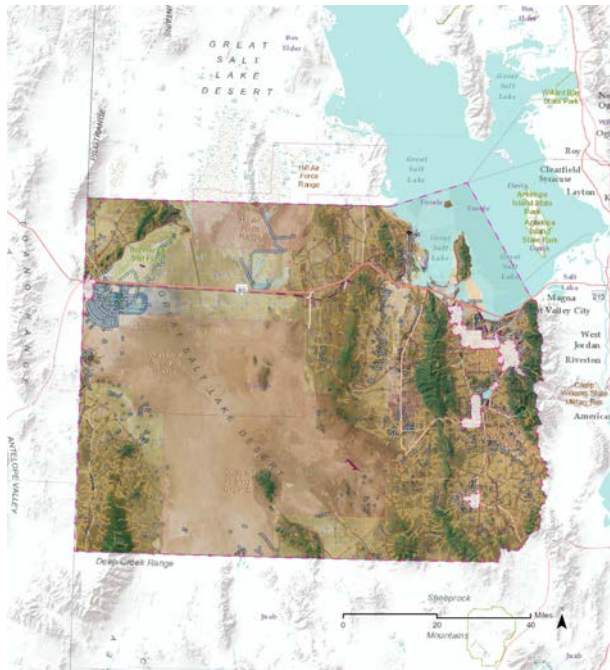
Alluvial Fans



## 5.7.3 UNINCORPORATED TOOELE COUNTY - HAZARDS

### AVALANCHE TERRAIN 233,042 AC

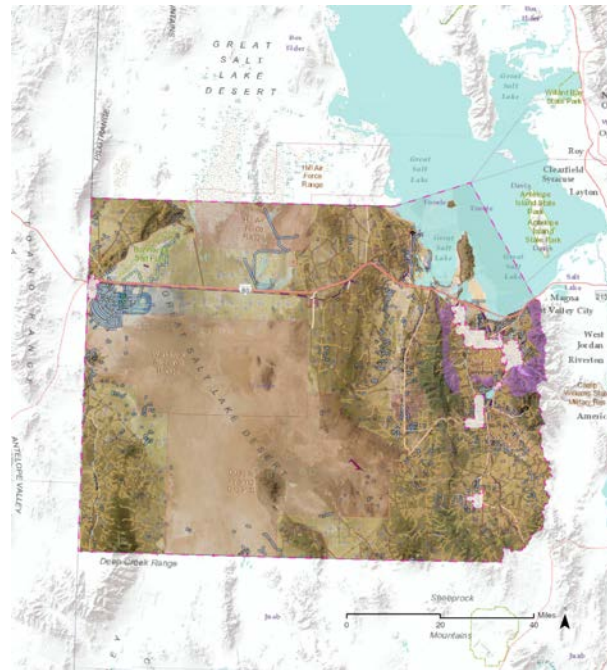
Avalanche terrain exists in most mountainous areas east of most of the developed areas of the county. The most likely risk is to those communities south of the Great Salt Lake, but the likelihood of those communities being directly impacted is low. Potential losses include 1 business, 4 homes, several transmission towers, 1 dam, over 100 miles of transmission lines, and several ground water protection zones.



Avalanche Terrain

### DEBRIS FLOW 77,247 AC

Debris flow data is limited in the county, but the areas that are mapped, primarily those around Tooele Valley, show risk mostly in steep areas above town. Any of these mountain ranges, given the right conditions, could have a high hazard for debris flows, particularly if wildfire occurs followed by high intensity rain events or intense snow melts. Potential losses include 1 business, 2 community centers, 17 homes, around 90 transmission towers, 90 miles of natural gas and petroleum lines, and thousands of acres of groundwater protection zones.



Debris Flow Risk

### ENGINEERING PROBLEM SOILS 344,194 AC DWELLINGS WITHOUT BASEMENTS 3,493,331 AC DWELLINGS WITH BASEMENTS 3,493,331 AC

Most of the county is covered in soils that have some type of structural limitation. However, with modern construction and engineering standards, most structures are not at risk. Potential losses include virtually most of the roads, power lines, oil and gas lines, homes, businesses, community critical facilities, etc. However, no substantial damage is expected to these resources with the exception of areas with very steep slopes, landslide areas, or areas with high erosion risk.



Problem Soils

## 5.7.3 UNINCORPORATED TOOELE COUNTY - HAZARDS

EROSION\_OFF ROAD TRAIL 707,548 AC

EROSION\_ROAD TRAIL 1,513,044 AC

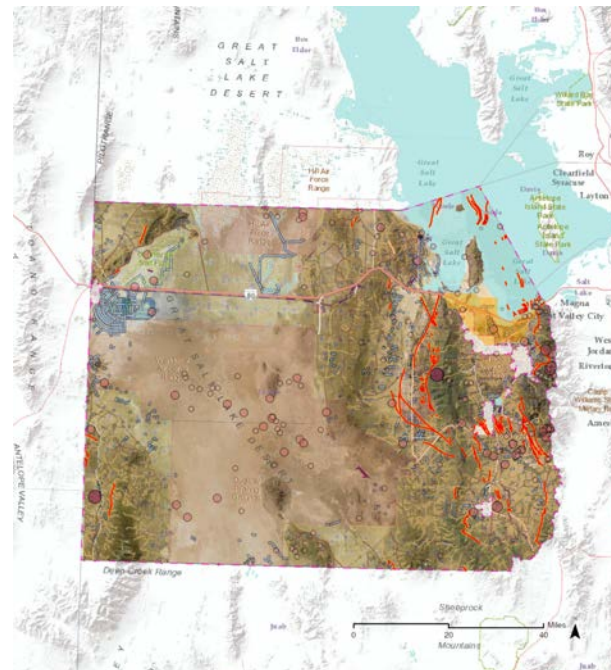
All higher elevation mountains and benches, have some level of limitations for roads or trails. Again, however, this is not an issue if infrastructure is properly designed and constructed according to modern standards. Erosion could impact around 60 businesses, 1 fire station, up to 1,000 homes, 1 church, over 160 transmission towers, 100's of miles of roads and power lines, and hundreds of thousands of acres of agricultural land, ground water protection areas, and natural areas.



Erosive Soils (Roads and Trails)

FAULT HAZARD ZONE 121,314 AC  
LIQUEFACTION 63,246 AC

Geologic faults and liquefaction areas are prevalent in the eastern portions of the county. Quaternary faults exist east of Tooele City, Stockton, and Rush Valley, while liquefaction risk exists in and north of Grantsville. Potential losses could be high from each and could include 1,000's of homes, dozens of local businesses, many churches and schools, local parks and roads/bridges, and many, many acres of farmland and natural amenities.

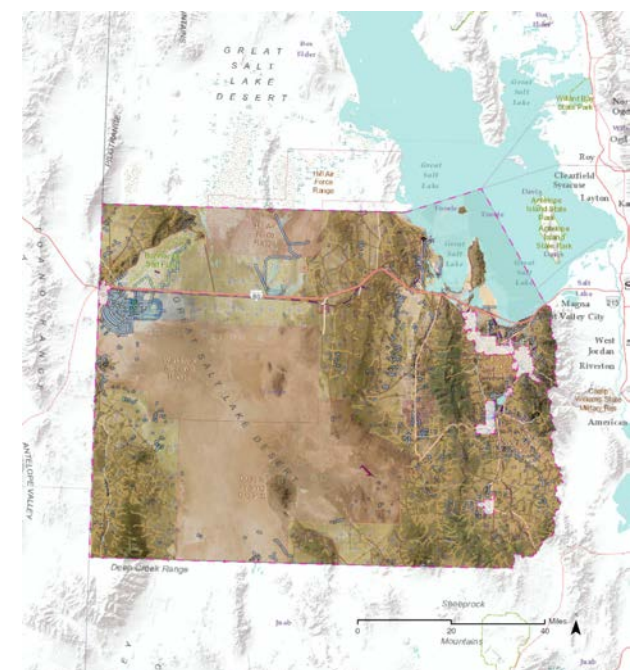


Quaternary Faults

1,500' buffer on Quaternary Faults

FEMA\_FLOOD\_ZONE 149 AC

Most potential losses in the FEMA flood zone are in incorporated areas. While few losses are expected in the county, most of the current risk is near Rush Valley. However, the Utah DEM is leading an effort to update the FEMA flood maps through the RiskMAP program. This will include much better floodplain data for the county. FEMA flood potential losses consist of 6 homes, 5 wells, 115 miles of transmission lines, 10 miles of roads, and tens of thousands of acres of grazing and farmlands, and natural areas.



Flood\_Dam Inundation

Flood\_Great Salt Lake Flooding

Flood\_Valley Bottom

Flood\_Soils

Flood\_FEMA 100 year floodplain

Flood\_Riparian/Wetland



## 5.7.3 UNINCORPORATED TOOELE COUNTY - HAZARDS

FLOOD_GREAT SALT LAKE	263,587 AC
FLOOD_SOILS PURDUE	164,050 AC
FLOOD_USU VALLEY BOTTOM	10,775 AC
FLOOD_WETLAND & RIPARIAN	1,710,231 AC

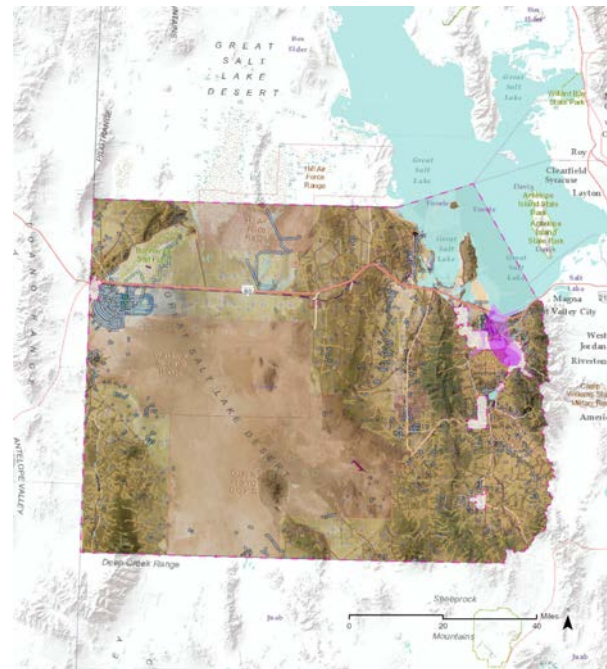
When adding additional flood layers to the risk analysis, risk increases exponentially for the county and local governments. Most low-lying areas, or areas with certain soil types are at risk for flooding. Many of these areas were likely historic Great Salt Lake beds and naturally become saturated when high precipitation events occur. In general, potential losses from all of these layers include dozens of homes, 12 businesses, several churches and schools, several campgrounds, over 200 miles of transmission lines, over 100 miles of roads, and thousands of acres of agricultural lands.



Flood_Dam Inundation	Flood_Soils
Flood_Great Salt Lake Flooding	Flood_FEMA 100 year floodplain
Flood_Valley Bottom	Flood_Riparian/Wetland

### DAM INUNDATION 26,325 AC

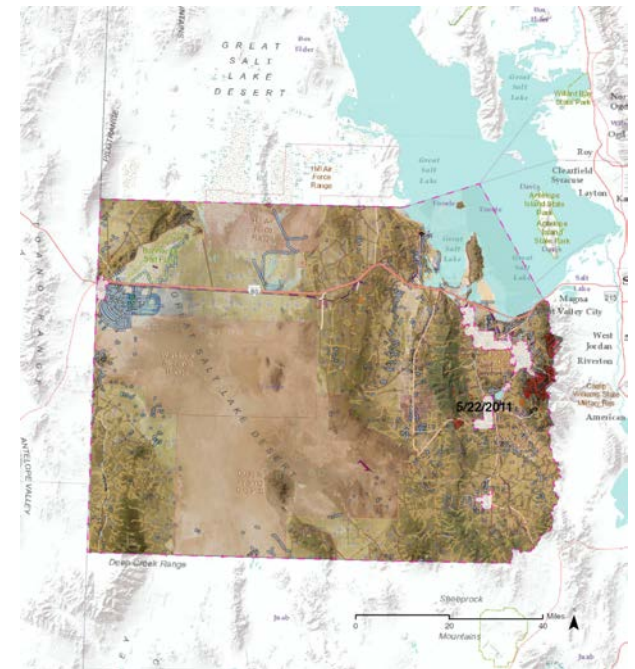
Large dam inundation areas exist in historic Great Salt Lake bottoms north and west of Tooele City, as well in and around Grantsville. Many potential losses could occur if various dams in the area break while at high capacity. Those losses could include 26 businesses, over 400 homes, 47 miles of transmission lines, over 100 miles of roads, and thousands of acres of agricultural lands.



	Dam Inundation Risk
--	---------------------

### LANDSLIDE 5,636 AC

Landslides pose a very low risk for structures and infrastructure in the unincorporated county since they are mostly located in the higher elevations and mountains. However, potential losses could include 8 springs, 13 miles of transmission lines, 59 miles of petroleum lines, 25 miles of roads, and some source water protection areas.



	Landslide Hazard
--	------------------

## 5.7.3 UNINCORPORATED TOOELE COUNTY - HAZARDS

### STEEP SLOPE

491,633 AC

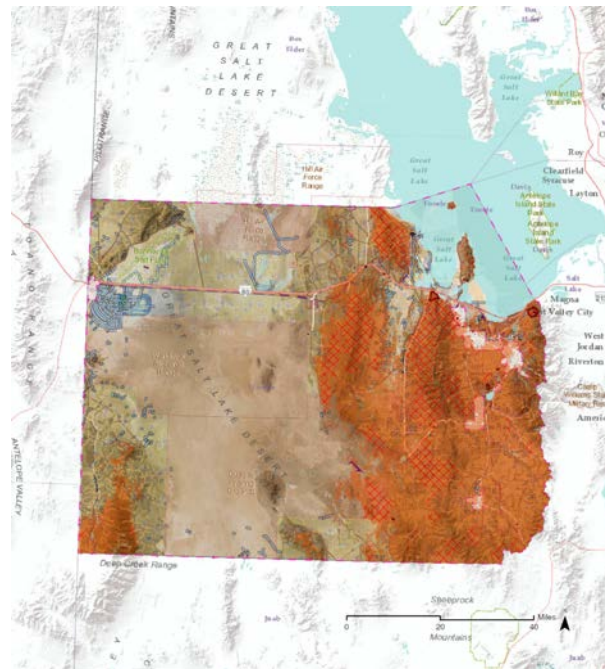
Direct potential losses from steep slopes in the county are negligible, since most development is located in lower elevations. However, pressure to develop higher on benches is likely. As such, it would be wise for the county to consider land use ordinances that prohibit growth in high sloped areas. Potential losses include 2 businesses, 9 homes, several radio towers, 222 miles of transmission lines, over 100 miles of gas/petroleum lines, hundreds of miles of roads, and many acres of natural and agricultural lands.



Steep Slopes >30%

### WILDFIRE HAZARD POTENTIAL 1,358,999 AC

Wildfire is one of the most extensive hazards in Tooele County. With mountains, benches, and dry vegetated valley's, fire can spread quickly and impact local landowners, farmers, military operations, and other facilities. Risk is high during certain years and with certain conditions. Potential losses include 74 businesses, 11 schools 3 libraries, 11 fire stations, around 3,000 homes, hundreds of miles of transmission lines, roads, and other utilities, and hundreds of thousands of acres of grazing, farmland, and natural areas.

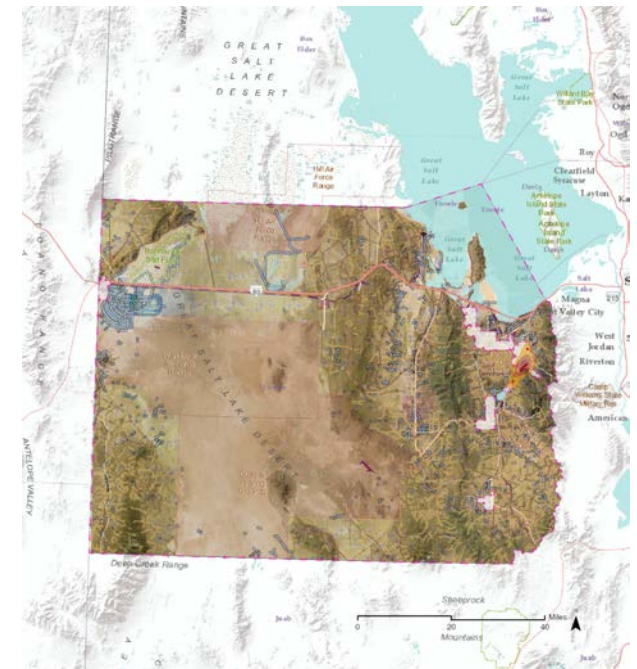


Wildfire Hazard

### WILDLIFE AUTO

252 AC

Wildlife-auto conflict areas in Tooele County are mostly located in and around Tooele City, as well as immediately north and south of town. These areas are prime habitat and migration corridors for mostly mule deer. Risk will only increase with time as more homes and roads are constructed. Potential losses would be in the form of drivers injured, deer killed or injured, and vehicle damage/loss.



Wildlife-Auto Conflict Risk Area

## 5.7.4.1 UNICORPORATED TOOELE COUNTY - RISK ASSESMENT RESULTS - STRUCTURES

UNICORPORATED TOOELE COUNTY - BUILDING FOOTPRINT - POTENTIAL LOSS TABLE			
Hazard	Category	Type	# of Structures
AlluvialFan	Commercial	Commercial	3
AlluvialFan	Community Resource	PlaceofWorship	1
AlluvialFan	Government Facility	LocalGov	1
AlluvialFan	Government Facility	Military	2
AlluvialFan	Industrial	Industrial	2
AlluvialFan	Other	Out	1
AlluvialFan	Residential	Duplex	2
AlluvialFan	Residential	Manufactured	9
AlluvialFan	Residential	Res_MobileHome	1
AlluvialFan	Residential	Residential	209
AvalanchTerrain	Commercial	Commercial	1
AvalanchTerrain	Community Resource	Community Center	3
AvalanchTerrain	Other	Out	2
AvalanchTerrain	Residential	Res_MobileHome	2
AvalanchTerrain	Residential	Res_Modular	1
AvalanchTerrain	Residential	Residential	4
DebrisFlow	Commercial	Commercial	1
DebrisFlow	Community Resource	Community Center	2
DebrisFlow	Other	Out	4
DebrisFlow	Residential	Manufactured	1
DebrisFlow	Residential	Res_MobileHome	1
DebrisFlow	Residential	Residential	15
DwellingsWithBasements	Commercial	Commercial	99
DwellingsWithBasements	Commercial	Grocery_Store	2
DwellingsWithBasements	Community Resource	Community Center	21
DwellingsWithBasements	Community Resource	Ed_Kto12	7
DwellingsWithBasements	Community Resource	Ed_PreK	4
DwellingsWithBasements	Community Resource	PlaceofWorship	6
DwellingsWithBasements	Emergency Facility	FireStation	7
DwellingsWithBasements	Government Facility	LocalGov	29
DwellingsWithBasements	Government Facility	Military	207



## 5.7.4.1 UNICORPORATED TOOELE COUNTY - RISK ASSESMENT RESULTS - STRUCTURES

UNICORPORATED TOOELE COUNTY - BUILDING FOOTPRINT - POTENTIAL LOSS TABLE			
Hazard	Category	Type	# of Structures
DwellingsWithBasements	Government Facility	Well	2
DwellingsWithBasements	Industrial	Industrial	217
DwellingsWithBasements	Industrial	Rail	9
DwellingsWithBasements	Other	Out	78
DwellingsWithBasements	Recreation Facility	HistoricSite	1
DwellingsWithBasements	Residential	Commercial_ Residential	24
DwellingsWithBasements	Residential	Condominium	14
DwellingsWithBasements	Residential	Duplex	5
DwellingsWithBasements	Residential	Manufactured	139
DwellingsWithBasements	Residential	Res_LowIncome	63
DwellingsWithBasements	Residential	Res_MobileHome	102
DwellingsWithBasements	Residential	Res_Modular	14
DwellingsWithBasements	Residential	Residential	3169
DwellingsWithoutBasements	Commercial	Commercial	99
DwellingsWithoutBasements	Commercial	Grocery_Store	2
DwellingsWithoutBasements	Community Resource	Community Center	21
DwellingsWithoutBasements	Community Resource	Ed_Kto12	7
DwellingsWithoutBasements	Community Resource	Ed_PreK	4
DwellingsWithoutBasements	Community Resource	PlaceofWorship	6
DwellingsWithoutBasements	Emergency Facility	FireStation	7
DwellingsWithoutBasements	Government Facility	LocalGov	29
DwellingsWithoutBasements	Government Facility	Military	207
DwellingsWithoutBasements	Government Facility	Well	2
DwellingsWithoutBasements	Industrial	Industrial	217
DwellingsWithoutBasements	Industrial	Rail	9
DwellingsWithoutBasements	Other	Out	78
DwellingsWithoutBasements	Recreation Facility	HistoricSite	1
DwellingsWithoutBasements	Residential	Commercial_ Residential	24
DwellingsWithoutBasements	Residential	Condominium	14

## 5.7.4.1 UNICORPORATED TOOELE COUNTY - RISK ASSESMENT RESULTS - STRUCTURES

UNICORPORATED TOOELE COUNTY - BUILDING FOOTPRINT - POTENTIAL LOSS TABLE			
Hazard	Category	Type	# of Structures
DwellingsWithoutBasements	Residential	Duplex	5
DwellingsWithoutBasements	Residential	Manufactured	139
DwellingsWithoutBasements	Residential	Res_LowIncome	63
DwellingsWithoutBasements	Residential	Res_MobileHome	102
DwellingsWithoutBasements	Residential	Res_Modular	14
DwellingsWithoutBasements	Residential	Residential	3169
Erosion_OffRoadTrail	Commercial	Commercial	5
Erosion_OffRoadTrail	Community Resource	Community Center	9
Erosion_OffRoadTrail	Emergency Facility	FireStation	1
Erosion_OffRoadTrail	Government Facility	LocalGov	3
Erosion_OffRoadTrail	Government Facility	Military	2
Erosion_OffRoadTrail	Government Facility	Well	1
Erosion_OffRoadTrail	Industrial	Industrial	20
Erosion_OffRoadTrail	Other	Out	10
Erosion_OffRoadTrail	Recreation Facility	HistoricSite	1
Erosion_OffRoadTrail	Residential	Commercial_ Residential	1
Erosion_OffRoadTrail	Residential	Res_MobileHome	12
Erosion_OffRoadTrail	Residential	Res_Modular	2
Erosion_OffRoadTrail	Residential	Residential	45
Erosion_RoadTrail	Commercial	Commercial	58
Erosion_RoadTrail	Commercial	Grocery_Store	2
Erosion_RoadTrail	Community Resource	Community Center	17
Erosion_RoadTrail	Community Resource	PlaceofWorship	1
Erosion_RoadTrail	Emergency Facility	FireStation	6
Erosion_RoadTrail	Government Facility	LocalGov	15
Erosion_RoadTrail	Government Facility	Military	174
Erosion_RoadTrail	Government Facility	Well	2
Erosion_RoadTrail	Industrial	Industrial	46
Erosion_RoadTrail	Industrial	Rail	2
Erosion_RoadTrail	Other	Out	38

## 5.7.4.1 UNINCORPORATED TOOELE COUNTY - RISK ASSESMENT RESULTS - STRUCTURES

UNINCORPORATED TOOELE COUNTY - BUILDING FOOTPRINT - POTENTIAL LOSS TABLE			
Hazard	Category	Type	# of Structures
Erosion_RoadTrail	Recreation Facility	HistoricSite	1
Erosion_RoadTrail	Residential	Commercial_ Residential	19
Erosion_RoadTrail	Residential	Condominium	12
Erosion_RoadTrail	Residential	Duplex	2
Erosion_RoadTrail	Residential	Manufactured	67
Erosion_RoadTrail	Residential	Res_LowIncome	29
Erosion_RoadTrail	Residential	Res_MobileHome	67
Erosion_RoadTrail	Residential	Res_Modular	11
Erosion_RoadTrail	Residential	Residential	756
FaultHazardZone	Commercial	Commercial	10
FaultHazardZone	Government Facility	LocalGov	3
FaultHazardZone	Government Facility	Military	8
FaultHazardZone	Government Facility	Well	1
FaultHazardZone	Industrial	Industrial	2
FaultHazardZone	Other	Out	13
FaultHazardZone	Residential	Commercial_ Residential	2
FaultHazardZone	Residential	Manufactured	17
FaultHazardZone	Residential	Res_MobileHome	7
FaultHazardZone	Residential	Residential	123
FEMA_FloodZone	Residential	Residential	6
Flood_DamInundation	Commercial	Commercial	26
Flood_DamInundation	Community Resource	PlaceofWorship	1
Flood_DamInundation	Emergency Facility	FireStation	1
Flood_DamInundation	Government Facility	LocalGov	2
Flood_DamInundation	Government Facility	Military	4
Flood_DamInundation	Industrial	Industrial	12
Flood_DamInundation	Other	Out	9
Flood_DamInundation	Residential	Duplex	2
Flood_DamInundation	Residential	Manufactured	47



## 5.7.4.1 UNICORPORATED TOOELE COUNTY - RISK ASSESMENT RESULTS - STRUCTURES

UNICORPORATED TOOELE COUNTY - BUILDING FOOTPRINT - POTENTIAL LOSS TABLE			
Hazard	Category	Type	# of Structures
Flood_DamInundation	Residential	Res_MobileHome	22
Flood_DamInundation	Residential	Residential	347
Flood_GSL	Industrial	Industrial	4
Flood_GSL	Industrial	Rail	1
Flood_SoilsPurdue	Commercial	Grocery_Store	1
Flood_SoilsPurdue	Community Resource	Community Center	1
Flood_SoilsPurdue	Community Resource	PlaceofWorship	1
Flood_SoilsPurdue	Industrial	Industrial	4
Flood_SoilsPurdue	Industrial	Rail	1
Flood_SoilsPurdue	Other	Out	15
Flood_SoilsPurdue	Residential	Commercial_ Residential	9
Flood_SoilsPurdue	Residential	Manufactured	10
Flood_SoilsPurdue	Residential	Residential	95
Flood_USUValleyBottom	Commercial	Grocery_Store	1
Flood_USUValleyBottom	Community Resource	Ed_Kto12	1
Flood_USUValleyBottom	Community Resource	PlaceofWorship	1
Flood_USUValleyBottom	Other	Out	8
Flood_USUValleyBottom	Residential	Commercial_ Residential	9
Flood_USUValleyBottom	Residential	Manufactured	4
Flood_USUValleyBottom	Residential	Res_MobileHome	10
Flood_USUValleyBottom	Residential	Residential	32
Flood_Wetland/Riparian	Commercial	Commercial	12
Flood_Wetland/Riparian	Community Resource	Community Center	1
Flood_Wetland/Riparian	Community Resource	PlaceofWorship	1
Flood_Wetland/Riparian	Government Facility	LocalGov	4
Flood_Wetland/Riparian	Government Facility	Military	3
Flood_Wetland/Riparian	Industrial	Industrial	3
Flood_Wetland/Riparian	Industrial	Rail	4
Flood_Wetland/Riparian	Other	Out	5

## 5.7.4.1 UNICORPORATED TOOELE COUNTY - RISK ASSESMENT RESULTS - STRUCTURES

UNICORPORATED TOOELE COUNTY - BUILDING FOOTPRINT - POTENTIAL LOSS TABLE			
Hazard	Category	Type	# of Structures
Flood_Wetland/Riparian	Residential	Commercial_Residential	1
Flood_Wetland/Riparian	Residential	Condominium	5
Flood_Wetland/Riparian	Residential	Duplex	1
Flood_Wetland/Riparian	Residential	Fourplex_Triplex	1
Flood_Wetland/Riparian	Residential	Manufactured	2
Flood_Wetland/Riparian	Residential	Res_LowIncome	2
Flood_Wetland/Riparian	Residential	Res_MobileHome	1
Flood_Wetland/Riparian	Residential	Residential	247
Liquefaction	Commercial	Commercial	84
Liquefaction	Commercial	Grocery_Store	1
Liquefaction	Community Resource	Community Center	3
Liquefaction	Community Resource	Ed_Kto12	9
Liquefaction	Community Resource	Ed_PreK	5
Liquefaction	Community Resource	PlaceofWorship	7
Liquefaction	Emergency Facility	FireStation	1
Liquefaction	Emergency Facility	MedicalFacility_Grocery_Store	1
Liquefaction	Government Facility	LocalGov	23
Liquefaction	Industrial	Industrial	30
Liquefaction	Industrial	Rail	1
Liquefaction	Other	Out	16
Liquefaction	Residential	Commercial_Residential	11
Liquefaction	Residential	Condominium	52
Liquefaction	Residential	Duplex	4
Liquefaction	Residential	Manufactured	70
Liquefaction	Residential	Res_LowIncome	63
Liquefaction	Residential	Res_MobileHome	60
Liquefaction	Residential	Res_Modular	6
Liquefaction	Residential	Residential	3405
Liquefaction	Transportation Facility	Parking	3
Wildfire	Commercial	Commercial	74
Wildfire	Community Resource	Community Center	18
Wildfire	Community Resource	Ed_Kto12	10

## 5.7.4.1 UNICORPORATED TOOELE COUNTY - RISK ASSESMENT RESULTS - STRUCTURES

UNICORPORATED TOOELE COUNTY - BUILDING FOOTPRINT - POTENTIAL LOSS TABLE			
Hazard	Category	Type	# of Structures
Wildfire	Community Resource	Ed_PreK	1
Wildfire	Community Resource	Library	3
Wildfire	Community Resource	PlaceofWorship	3
Wildfire	Emergency Facility	FireStation	11
Wildfire	Emergency Facility	Police	1
Wildfire	Government Facility	LocalGov	31
Wildfire	Government Facility	Military	430
Wildfire	Government Facility	Well	3
Wildfire	Industrial	Industrial	118
Wildfire	Industrial	Rail	1
Wildfire	Other	Out	96
Wildfire	Recreation Facility	HistoricSite	1
Wildfire	Residential	Commercial_Residential	20
Wildfire	Residential	Condominium	30
Wildfire	Residential	Duplex	8
Wildfire	Residential	Fourplex_Triplex	9
Wildfire	Residential	Manufactured	166
Wildfire	Residential	Res_LowIncome	40
Wildfire	Residential	Res_MobileHome	54
Wildfire	Residential	Res_Modular	9
Wildfire	Residential	Residential	2708
Wildfire	Transportation Facility	Parking	3
SGID_EngineeringPS	Commercial	Commercial	4
SGID_EngineeringPS	Community Resource	Community Center	8
SGID_EngineeringPS	Emergency Facility	FireStation	5
SGID_EngineeringPS	Government Facility	Military	26
SGID_EngineeringPS	Industrial	Industrial	16
SGID_EngineeringPS	Industrial	Rail	2
SGID_EngineeringPS	Other	Out	4
SGID_EngineeringPS	Recreation Facility	HistoricSite	1
SGID_EngineeringPS	Residential	Commercial_Residential	1
SGID_EngineeringPS	Residential	Manufactured	2
SGID_EngineeringPS	Residential	Res_MobileHome	9
SGID_EngineeringPS	Residential	Residential	90
SteepSlope	Commercial	Commercial	2

UNICORPORATED TOOELE COUNTY - BUILDING FOOTPRINT - POTENTIAL LOSS TABLE			
Hazard	Category	Type	# of Structures
SteepSlope	Community Resource	Community Center	3
SteepSlope	Industrial	Industrial	3
SteepSlope	Other	Out	5
SteepSlope	Residential	Res_MobileHome	1
SteepSlope	Residential	Res_Modular	1
SteepSlope	Residential	Residential	7



## 5.7.4.2 UNICORPORATED TOOELE COUNTY - RISK ASSESMENT RESULTS - CRITICAL FACILITIES

UNICORPORATED TOOELE COUNTY - CRITICAL FACILITIES - POTENTIAL LOSS TABLE				UNICORPORATED TOOELE COUNTY - CRITICAL FACILITIES - POTENTIAL LOSS TABLE			
Hazard	Category	Type	# of Facilities	Hazard	Category	Type	# of Facilities
AlluvialFan	Community	PlaceofWorship	1	DwellingsWithBasements	Community	ED_K12	3
AlluvialFan	Energy	SubstationRegulator	2	DwellingsWithBasements	Community	Ed_PreK	4
AlluvialFan	Water	Dam	1	DwellingsWithBasements	Community	GroceryStore	2
AlluvialFan	Water	Well_Log	45	DwellingsWithBasements	Community	PlaceofWorship	4
AvalanchTerrain	Natural	SpringSeep	24	DwellingsWithBasements	Emergency	FireStation	5
AvalanchTerrain	Other	Tower_AntennaStructureRegistrate	1	DwellingsWithBasements	Emergency	NationalShelterSystemFacility	2
AvalanchTerrain	Other	Tower_Cellular	1	DwellingsWithBasements	Energy	FuelStation_AlternativeEnergy	4
AvalanchTerrain	Other	Tower_LandMobileCommerTrans	1	DwellingsWithBasements	Energy	FuelStation_Gas	7
AvalanchTerrain	Other	Tower_LandMobilePrivateTransmission	13	DwellingsWithBasements	Energy	PowerGeneratingFacilities	1
AvalanchTerrain	Other	Tower_MicrowaveService	9	DwellingsWithBasements	Energy	SubstationRegulator	15
AvalanchTerrain	Recreation	Campground	1	DwellingsWithBasements	Energy	Well_OilGas	24
AvalanchTerrain	Recreation	HistoricSites	4	DwellingsWithBasements	Government	Military	1
AvalanchTerrain	Recreation	StateParks	1	DwellingsWithBasements	Natural	SpringSeep	423
AvalanchTerrain	Water	Dam	1	DwellingsWithBasements	Other	Mine_CrushedStone	2
AvalanchTerrain	Water	Well_Log	17	DwellingsWithBasements	Other	Mine_Lime	1
DebrisFlow	Natural	SpringSeep	34	DwellingsWithBasements	Other	Mine_Salt	1
DebrisFlow	Other	Tower_AntennaStructureRegistrate	2	DwellingsWithBasements	Other	ProcessingPlant_NonferrousMetal	1
DebrisFlow	Other	Tower_Cellular	2	DwellingsWithBasements	Other	SolidWaisteFacility	3
DebrisFlow	Other	Tower_FMTransmission	2	DwellingsWithBasements	Other	Tower_AntennaStructureRegistrate	14
DebrisFlow	Other	Tower_LandMobileBroadcast	3	DwellingsWithBasements	Other	Tower_Cellular	9
DebrisFlow	Other	Tower_LandMobileCommerTrans	1	DwellingsWithBasements	Other	Tower_FMTransmission	4
DebrisFlow	Other	Tower_LandMobilePrivateTransmission	21	DwellingsWithBasements	Other	Tower_LandMobileBroadcast	3
DebrisFlow	Other	Tower_MicrowaveService	56	DwellingsWithBasements	Other	Tower_LandMobileCommerTrans	1
DebrisFlow	Other	Tower_TVDigital	1	DwellingsWithBasements	Other	Tower_LandMobilePrivateTransmission	88
DebrisFlow	Recreation	Campground	5	DwellingsWithBasements	Other	Tower_MicrowaveService	138
DebrisFlow	Recreation	HistoricSites	2	DwellingsWithBasements	Other	Tower_PagingTrans	3
DebrisFlow	Recreation	Trailhead	2	DwellingsWithBasements	Other	Tower_TVDigital	10
DebrisFlow	Water	Well_Log	59	DwellingsWithBasements	Recreation	Campground	16
DwellingsWithBasements	Community	Cemetery	6	DwellingsWithBasements	Recreation	CommunityCenter	2
				DwellingsWithBasements	Recreation	GolfCourse	1

## 5.7.4.2 UNICORPORATED TOOELE COUNTY - RISK ASSESMENT RESULTS - CRITICAL FACILITIES

UNICORPORATED TOOELE COUNTY - CRITICAL FACILITIES - POTENTIAL LOSS TABLE			
Hazard	Category	Type	# of Facilities
DwellingsWithBasements	Recreation	HistoricSites	34
DwellingsWithBasements	Recreation	Park	13
DwellingsWithBasements	Recreation	StateParks	1
DwellingsWithBasements	Recreation	Trailhead	8
DwellingsWithBasements	Transportation	Airport	4
DwellingsWithBasements	Transportation	Bridge_Rail	14
DwellingsWithBasements	Transportation	Bridge_Road	20
DwellingsWithBasements	Transportation	BusStopsWasatchFront	3
DwellingsWithBasements	Transportation	Heliport	2
DwellingsWithBasements	Transportation	PortofEntry	1
DwellingsWithBasements	Water	Dam	12
DwellingsWithBasements	Water	Well_Log	1890
DwellingsWithBasements	Water	Well_NHD	101
DwellingsWithoutBasements	Community	Cemetery	6
DwellingsWithoutBasements	Community	ED_K12	3
DwellingsWithoutBasements	Community	Ed_PreK	4
DwellingsWithoutBasements	Community	GroceryStore	2
DwellingsWithoutBasements	Community	PlaceofWorship	4
DwellingsWithoutBasements	Emergency	FireStation	5
DwellingsWithoutBasements	Emergency	NationalShelterSystemFacility	2
DwellingsWithoutBasements	Energy	FuelStation_AlternativeEnergy	4
DwellingsWithoutBasements	Energy	FuelStation_Gas	7
DwellingsWithoutBasements	Energy	PowerGeneratingFacilities	1
DwellingsWithoutBasements	Energy	SubstationRegulator	15
DwellingsWithoutBasements	Energy	Well_OilGas	24
DwellingsWithoutBasements	Government	Military	1
DwellingsWithoutBasements	Natural	SpringSeep	423
DwellingsWithoutBasements	Other	Mine_CrushedStone	2
DwellingsWithoutBasements	Other	Mine_Lime	1
DwellingsWithoutBasements	Other	Mine_Salt	1
DwellingsWithoutBasements	Other	ProcessingPlant_NonferrousMetal	1
DwellingsWithoutBasements	Other	SolidWaisteFacility	3

UNICORPORATED TOOELE COUNTY - CRITICAL FACILITIES - POTENTIAL LOSS TABLE			
Hazard	Category	Type	# of Facilities
DwellingsWithoutBasements	Other	Tower_AntennaStructureRegistrare	14
DwellingsWithoutBasements	Other	Tower_Cellular	9
DwellingsWithoutBasements	Other	Tower_FMTransmission	4
DwellingsWithoutBasements	Other	Tower_LandMobileBroadcast	3
DwellingsWithoutBasements	Other	Tower_LandMobileCommerTrans	1
DwellingsWithoutBasements	Other	Tower_LandMobilePrivateTransmission	88
DwellingsWithoutBasements	Other	Tower_MicrowaveService	138
DwellingsWithoutBasements	Other	Tower_PagingTrans	3
DwellingsWithoutBasements	Other	Tower_TVDigital	10
DwellingsWithoutBasements	Recreation	Campground	16
DwellingsWithoutBasements	Recreation	CommunityCenter	2
DwellingsWithoutBasements	Recreation	GolfCourse	1
DwellingsWithoutBasements	Recreation	HistoricSites	34
DwellingsWithoutBasements	Recreation	Park	13
DwellingsWithoutBasements	Recreation	StateParks	1
DwellingsWithoutBasements	Recreation	Trailhead	8
DwellingsWithoutBasements	Transportation	Airport	4
DwellingsWithoutBasements	Transportation	Bridge_Rail	14
DwellingsWithoutBasements	Transportation	Bridge_Road	20
DwellingsWithoutBasements	Transportation	BusStopsWasatchFront	3
DwellingsWithoutBasements	Transportation	Heliport	2
DwellingsWithoutBasements	Transportation	PortofEntry	1
DwellingsWithoutBasements	Water	Dam	12
DwellingsWithoutBasements	Water	Well_Log	1890
DwellingsWithoutBasements	Water	Well_NHD	101
Erosion_OffRoadTrail	Community	Cemetery	3
Erosion_OffRoadTrail	Emergency	FireStation	1
Erosion_OffRoadTrail	Energy	SubstationRegulator	2
Erosion_OffRoadTrail	Natural	SpringSeep	157
Erosion_OffRoadTrail	Other	SolidWaisteFacility	1
Erosion_OffRoadTrail	Other	Tower_AntennaStructureRegistrare	5

## 5.7.4.2 UNICORPORATED TOOELE COUNTY - RISK ASSESMENT RESULTS - CRITICAL FACILITIES

UNICORPORATED TOOELE COUNTY - CRITICAL FACILITIES - POTENTIAL LOSS TABLE				UNICORPORATED TOOELE COUNTY - CRITICAL FACILITIES - POTENTIAL LOSS TABLE			
Hazard	Category	Type	# of Facilities	Hazard	Category	Type	# of Facilities
Erosion_OffRoadTrail	Other	Tower_Cellular	6	Erosion_RoadTrail	Other	Tower_Cellular	6
Erosion_OffRoadTrail	Other	Tower_FMTransmission	4	Erosion_RoadTrail	Other	Tower_FMTransmission	4
Erosion_OffRoadTrail	Other	Tower_LandMobileBroadcast	3	Erosion_RoadTrail	Other	Tower_LandMobileBroadcast	3
Erosion_OffRoadTrail	Other	Tower_LandMobileCommerTrans	1	Erosion_RoadTrail	Other	Tower_LandMobileCommerTrans	1
Erosion_OffRoadTrail	Other	Tower_LandMobilePrivateTransmission	53	Erosion_RoadTrail	Other	Tower_LandMobilePrivateTransmission	64
Erosion_OffRoadTrail	Other	Tower_MicrowaveService	100	Erosion_RoadTrail	Other	Tower_MicrowaveService	116
Erosion_OffRoadTrail	Other	Tower_PagingTrans	1	Erosion_RoadTrail	Other	Tower_PagingTrans	2
Erosion_OffRoadTrail	Other	Tower_TVDigital	10	Erosion_RoadTrail	Other	Tower_TVDigital	10
Erosion_OffRoadTrail	Recreation	Campground	10	Erosion_RoadTrail	Recreation	Campground	14
Erosion_OffRoadTrail	Recreation	CommunityCenter	1	Erosion_RoadTrail	Recreation	CommunityCenter	2
Erosion_OffRoadTrail	Recreation	HistoricSites	13	Erosion_RoadTrail	Recreation	HistoricSites	28
Erosion_OffRoadTrail	Recreation	StateParks	1	Erosion_RoadTrail	Recreation	Park	1
Erosion_OffRoadTrail	Recreation	Trailhead	5	Erosion_RoadTrail	Recreation	StateParks	1
Erosion_OffRoadTrail	Transportation	Bridge_Rail	1	Erosion_RoadTrail	Recreation	Trailhead	8
Erosion_OffRoadTrail	Transportation	Bridge_Road	1	Erosion_RoadTrail	Transportation	Bridge_Rail	8
Erosion_OffRoadTrail	Water	Dam	3	Erosion_RoadTrail	Transportation	Bridge_Road	6
Erosion_OffRoadTrail	Water	Well_Log	163	Erosion_RoadTrail	Transportation	BusStopsWasatchFront	2
Erosion_OffRoadTrail	Water	Well_NHD	1	Erosion_RoadTrail	Transportation	Heliport	2
Erosion_RoadTrail	Community	Cemetery	6	Erosion_RoadTrail	Water	Dam	11
Erosion_RoadTrail	Community	GroceryStore	2	Erosion_RoadTrail	Water	Well_Log	612
Erosion_RoadTrail	Community	PlaceofWorship	1	Erosion_RoadTrail	Water	Well_NHD	22
Erosion_RoadTrail	Emergency	FireStation	3	FaultHazardZone	Community	Cemetery	2
Erosion_RoadTrail	Energy	FuelStation_AlternativeEnergy	4	FaultHazardZone	Energy	SubstationRegulator	3
Erosion_RoadTrail	Energy	FuelStation_Gas	5	FaultHazardZone	Energy	Well_OilGas	2
Erosion_RoadTrail	Energy	SubstationRegulator	8	FaultHazardZone	Natural	SpringSeep	39
Erosion_RoadTrail	Energy	Well_OilGas	9	FaultHazardZone	Other	SolidWaisteFacility	1
Erosion_RoadTrail	Government	Military	1	FaultHazardZone	Other	Tower_LandMobilePrivateTransmission	5
Erosion_RoadTrail	Natural	SpringSeep	243	FaultHazardZone	Other	Tower_MicrowaveService	6
Erosion_RoadTrail	Other	Mine_CrushedStone	2	FaultHazardZone	Recreation	Campground	1
Erosion_RoadTrail	Other	SolidWaisteFacility	1	FaultHazardZone	Recreation	HistoricSites	3
Erosion_RoadTrail	Other	Tower_AntennaStructureRegistrarte	5	FaultHazardZone	Recreation	Trailhead	1



## 5.7.4.2 UNINCORPORATED TOOELE COUNTY - RISK ASSESMENT RESULTS - CRITICAL FACILITIES

UNINCORPORATED TOOELE COUNTY - CRITICAL FACILITIES - POTENTIAL LOSS TABLE				UNINCORPORATED TOOELE COUNTY - CRITICAL FACILITIES - POTENTIAL LOSS TABLE			
Hazard	Category	Type	# of Facilities	Hazard	Category	Type	# of Facilities
FaultHazardZone	Transportation	Bridge_Rail	1	Flood_SoilsPurdue	Community	PlaceofWorship	1
FaultHazardZone	Transportation	Bridge_Road	2	Flood_SoilsPurdue	Energy	Well_OilGas	1
FaultHazardZone	Water	Dam	2	Flood_SoilsPurdue	Natural	SpringSeep	142
FaultHazardZone	Water	Well_Log	186	Flood_SoilsPurdue	Other	Mine_Lime	1
FaultHazardZone	Water	Well_NHD	12	Flood_SoilsPurdue	Other	Mine_Salt	1
FEMA_FloodZone	Water	Well_Log	4	Flood_SoilsPurdue	Other	Tower_LandMobilePrivateTransmission	5
FEMA_FloodZone	Water	Well_NHD	1	Flood_SoilsPurdue	Other	Tower_MicrowaveService	3
Flood_DamInundation	Community	PlaceofWorship	1	Flood_SoilsPurdue	Recreation	Campground	2
Flood_DamInundation	Emergency	FireStation	1	Flood_SoilsPurdue	Recreation	HistoricSites	1
Flood_DamInundation	Emergency	NationalShelterSystemFacility	1	Flood_SoilsPurdue	Transportation	Bridge_Rail	4
Flood_DamInundation	Energy	SubstationRegulator	1	Flood_SoilsPurdue	Transportation	Bridge_Road	4
Flood_DamInundation	Energy	Well_OilGas	5	Flood_SoilsPurdue	Water	Dam	2
Flood_DamInundation	Other	Mine_Salt	1	Flood_SoilsPurdue	Water	Well_Log	64
Flood_DamInundation	Other	Tower_AntennaStructureRegistrate	2	Flood_SoilsPurdue	Water	Well_NHD	42
Flood_DamInundation	Other	Tower_LandMobilePrivateTransmission	4	Flood_USUValleyBottom	Community	Cemetery	1
Flood_DamInundation	Other	Tower_MicrowaveService	1	Flood_USUValleyBottom	Community	ED_K12	1
Flood_DamInundation	Transportation	Airport	2	Flood_USUValleyBottom	Community	GroceryStore	1
Flood_DamInundation	Water	Dam	2	Flood_USUValleyBottom	Community	PlaceofWorship	1
Flood_DamInundation	Water	Well_Log	611	Flood_USUValleyBottom	Emergency	FireStation	1
Flood_DamInundation	Water	Well_NHD	20	Flood_USUValleyBottom	Energy	Well_OilGas	1
Flood_GSL	Energy	Well_OilGas	5	Flood_USUValleyBottom	Natural	SpringSeep	81
Flood_GSL	Natural	SpringSeep	13	Flood_USUValleyBottom	Other	SolidWasteFacility	1
Flood_GSL	Other	Tower_LandMobilePrivateTransmission	3	Flood_USUValleyBottom	Recreation	Campground	3
Flood_GSL	Other	Tower_MicrowaveService	3	Flood_USUValleyBottom	Recreation	HistoricSites	1
Flood_GSL	Recreation	HistoricSites	2	Flood_USUValleyBottom	Water	Dam	1
Flood_GSL	Transportation	Bridge_Rail	1	Flood_USUValleyBottom	Water	Well_Log	33
Flood_GSL	Transportation	Bridge_Road	5	Flood_USUValleyBottom	Water	Well_NHD	6
Flood_GSL	Water	Dam	1	Flood_Wetland/Riparian	Emergency	NationalShelterSystemFacility	1
Flood_GSL	Water	Well_Log	9	Flood_Wetland/Riparian	Energy	FuelStation_AlternativeEnergy	2
Flood_GSL	Water	Well_NHD	1	Flood_Wetland/Riparian	Energy	SubstationRegulator	2
Flood_SoilsPurdue	Community	GroceryStore	1	Flood_Wetland/Riparian	Energy	Well_OilGas	7
				Flood_Wetland/Riparian	Natural	SpringSeep	322

## 5.7.4.2 UNICORPORATED TOOELE COUNTY - RISK ASSESMENT RESULTS - CRITICAL FACILITIES

UNICORPORATED TOOELE COUNTY - CRITICAL FACILITIES - POTENTIAL LOSS TABLE				UNICORPORATED TOOELE COUNTY - CRITICAL FACILITIES - POTENTIAL LOSS TABLE			
Hazard	Category	Type	# of Facilities	Hazard	Category	Type	# of Facilities
Flood_Wetland/Riparian	Other	Mine_Lime	1	Liquefaction	Other	Tower_LandMobilePrivateTransmission	10
Flood_Wetland/Riparian	Other	Mine_Salt	1	Liquefaction	Other	Tower_MicrowaveService	10
Flood_Wetland/Riparian	Other	Tower_AntennaStructureRegistrarte	2	Liquefaction	Recreation	GolfCourse	1
Flood_Wetland/Riparian	Other	Tower_Cellular	2	Liquefaction	Recreation	HistoricSites	4
Flood_Wetland/Riparian	Other	Tower_LandMobilePrivateTransmission	6	Liquefaction	Recreation	Park	18
Flood_Wetland/Riparian	Other	Tower_MicrowaveService	6	Liquefaction	Transportation	Airport	2
Flood_Wetland/Riparian	Recreation	Campground	1	Liquefaction	Transportation	Bridge_Rail	1
Flood_Wetland/Riparian	Recreation	HistoricSites	5	Liquefaction	Transportation	Bridge_Road	8
Flood_Wetland/Riparian	Recreation	Park	3	Liquefaction	Transportation	BusStopsWasatchFront	7
Flood_Wetland/Riparian	Recreation	StateParks	1	Liquefaction	Water	Dam	1
Flood_Wetland/Riparian	Transportation	Bridge_Rail	25	Liquefaction	Water	Well_Log	734
Flood_Wetland/Riparian	Transportation	Bridge_Road	2	Liquefaction	Water	Well_NHD	38
Flood_Wetland/Riparian	Water	Dam	5	Wildfire	Community	Cemetery	6
Flood_Wetland/Riparian	Water	Well_Log	156	Wildfire	Community	ED_K12	4
Flood_Wetland/Riparian	Water	Well_NHD	59	Wildfire	Community	Ed_PreK	1
Landslide	Natural	SpringSeep	8	Wildfire	Community	Library	2
Liquefaction	Community	ED_K12	4	Wildfire	Community	PlaceofWorship	2
Liquefaction	Community	Ed_PreK	5	Wildfire	Emergency	FireStation	6
Liquefaction	Community	GroceryStore	3	Wildfire	Emergency	LawEnforcement	1
Liquefaction	Community	PlaceofWorship	4	Wildfire	Emergency	NationalShelterSystemFacility	2
Liquefaction	Emergency	FireStation	1	Wildfire	Energy	FuelStation_AlternativeEnergy	4
Liquefaction	Emergency	HealthCareFacility	1	Wildfire	Energy	FuelStation_Gas	2
Liquefaction	Emergency	NationalShelterSystemFacility	1	Wildfire	Energy	PowerGeneratingFacilities	1
Liquefaction	Energy	FuelStation_AlternativeEnergy	2	Wildfire	Energy	SubstationRegulator	22
Liquefaction	Energy	FuelStation_Gas	5	Wildfire	Energy	Well_OilGas	24
Liquefaction	Energy	SubstationRegulator	3	Wildfire	Government	Military	4
Liquefaction	Energy	Well_OilGas	6	Wildfire	Natural	SpringSeep	248
Liquefaction	Natural	SpringSeep	6	Wildfire	Other	Mine_CrushedStone	2
Liquefaction	Other	Mine_Lime	1	Wildfire	Other	Mine_Salt	1
Liquefaction	Other	Mine_Salt	1	Wildfire	Other	Mine_SandandGravel	2
Liquefaction	Other	Tower_AntennaStructureRegistrarte	2	Wildfire	Other	ProcessingPlant_NonferrousMetal	1

## 5.7.4.2 UNICORPORATED TOOELE COUNTY - RISK ASSESMENT RESULTS - CRITICAL FACILITIES

UNICORPORATED TOOELE COUNTY - CRITICAL FACILITIES - POTENTIAL LOSS TABLE				UNICORPORATED TOOELE COUNTY - CRITICAL FACILITIES - POTENTIAL LOSS TABLE			
Hazard	Category	Type	# of Facilities	Hazard	Category	Type	# of Facilities
Wildfire	Other	SolidWasteFacility	4	SGID_EngineeringPS	Other	Tower_MicrowaveService	15
Wildfire	Other	Tower_AntennaStructureRegistrarte	4	SGID_EngineeringPS	Recreation	Campground	3
Wildfire	Other	Tower_Cellular	4	SGID_EngineeringPS	Recreation	CommunityCenter	1
Wildfire	Other	Tower_FMTtransmission	4	SGID_EngineeringPS	Recreation	HistoricSites	7
Wildfire	Other	Tower_LandMobileCommerTrans	1	SGID_EngineeringPS	Recreation	Trailhead	2
Wildfire	Other	Tower_LandMobilePrivateTransmission	60	SGID_EngineeringPS	Transportation	Bridge_Road	1
Wildfire	Other	Tower_MicrowaveService	105	SGID_EngineeringPS	Water	Dam	2
Wildfire	Other	Tower_PagingTrans	2	SGID_EngineeringPS	Water	Well_Log	76
Wildfire	Other	Tower_TVDigital	10	SGID_EngineeringPS	Water	Well_NHD	1
Wildfire	Recreation	Campground	13	SteepSlope	Natural	SpringSeep	63
Wildfire	Recreation	CommunityCenter	2	SteepSlope	Other	Tower_AntennaStructureRegistrarte	3
Wildfire	Recreation	GolfCourse	1	SteepSlope	Other	Tower_Cellular	5
Wildfire	Recreation	HistoricSites	25	SteepSlope	Other	Tower_FMTtransmission	1
Wildfire	Recreation	Park	5	SteepSlope	Other	Tower_LandMobileBroadcast	3
Wildfire	Recreation	Trailhead	7	SteepSlope	Other	Tower_LandMobileCommerTrans	1
Wildfire	Transportation	Airport	2	SteepSlope	Other	Tower_LandMobilePrivateTransmission	42
Wildfire	Transportation	Bridge_Rail	26	SteepSlope	Other	Tower_MicrowaveService	54
Wildfire	Transportation	BusStopsWasatchFront	3	SteepSlope	Other	Tower_PagingTrans	1
Wildfire	Transportation	Heliport	4	SteepSlope	Other	Tower_TVDigital	1
Wildfire	Water	Dam	9	SteepSlope	Recreation	Campground	4
Wildfire	Water	Well_Log	2252	SteepSlope	Recreation	HistoricSites	2
Wildfire	Water	Well_NHD	62	SteepSlope	Recreation	StateParks	1
Wildfire	Water	Well_UndergroundInjectionControl	2	SteepSlope	Transportation	Bridge_Rail	1
SGID_EngineeringPS	Emergency	FireStation	2	SteepSlope	Water	Dam	1
SGID_EngineeringPS	Energy	SubstationRegulator	2	SteepSlope	Water	Well_Log	95
SGID_EngineeringPS	Natural	SpringSeep	36	WildlifeAuto	Energy	SubstationRegulator	1
SGID_EngineeringPS	Other	Tower_AntennaStructureRegistrarte	2	WildlifeAuto	Other	Tower_LandMobilePrivateTransmission	2
SGID_EngineeringPS	Other	Tower_FMTtransmission	1	WildlifeAuto	Water	Well_Log	2
SGID_EngineeringPS	Other	Tower_LandMobilePrivateTransmission	10				



## 5.7.4.3 UNICORPORATED TOOELE COUNTY - RISK ASSESMENT RESULTS - PARCEL DATA

UNICORPORATED TOOELE COUNTY - CRITICAL INFRASTRUCTURE PARCEL DATA - POTENTIAL LOSS TABLE					
Hazard	Category	Type	# of Parcels	Sum Parcel Acres	Sum Total Market Value
AlluvialFan	BLM	BLM	13	0.0	\$-
AlluvialFan	Commercial	Commercial	5	209.1	\$1,100,090.00
AlluvialFan	Manufacture_Industry	Other	5	382.8	\$1,053,203.00
AlluvialFan	PlaceofWorship	Community_Resources	1	3.0	\$-
AlluvialFan	Police Department/Correctional_Fac	EmergencyServices	1	10.5	\$-
AlluvialFan	Res_Munufacture_Mobile_Hookups	Residential	18	61.7	\$3,539,334.00
AlluvialFan	Residential	Residential	145	935.6	\$37,555,556.00
AlluvialFan	Residential_Commercial	Residential	1	97.4	\$2,309,307.00
AlluvialFan	Residential_MultiFamily	Residential	1	1.0	\$139,985.00
AlluvialFan	SITLA	SITLA	1	0.0	\$-
AlluvialFan	StateofUtah	StateofUtah	3	0.0	\$-
AvalanchTerrain	BLM	BLM	287	0.0	\$-
AvalanchTerrain	Comm_Center	Community_Resources	1	2.6	\$-
AvalanchTerrain	Commercial	Commercial	6	342.3	\$935,863.00
AvalanchTerrain	DOD	DOD	3	0.0	\$-
AvalanchTerrain	Manufacture_Industry	Other	8	2,069.9	\$5,081,713.00
AvalanchTerrain	Res_Munufacture_Mobile_Hookups	Residential	2	65.0	\$707,790.00
AvalanchTerrain	Residential	Residential	69	1,485.3	\$4,625,149.00
AvalanchTerrain	SITLA	SITLA	92	0.0	\$-
AvalanchTerrain	StateofUtah	StateofUtah	4	0.0	\$-
AvalanchTerrain	Tribal	Tribal	1	0.0	\$-
AvalanchTerrain	USFS	USFS	15	0.0	\$-
DebrisFlow	BLM	BLM	49	0.0	\$-
DebrisFlow	Commercial	Commercial	5	342.2	\$829,421.00

## 5.7.4.3 UNICORPORATED TOOELE COUNTY - RISK ASSESMENT RESULTS - PARCEL DATA

UNICORPORATED TOOELE COUNTY - CRITICAL INFRASTRUCTURE PARCEL DATA - POTENTIAL LOSS TABLE					
Hazard	Category	Type	# of Parcels	Sum Parcel Acres	Sum Total Market Value
DebrisFlow	Manufacture_Industry	Other	8	2,069.9	\$5,081,713.00
DebrisFlow	Res_Munufacture_Mobile_Hookups	Residential	2	65.0	\$707,790.00
DebrisFlow	Residential	Residential	27	1,874.7	\$4,471,195.00
DebrisFlow	SITLA	SITLA	13	0.0	\$-
DebrisFlow	StateofUtah	StateofUtah	4	0.0	\$-
DebrisFlow	USFS	USFS	3	0.0	\$-
DwellingsWithBasements	BLM	BLM	643	0.0	\$-
DwellingsWithBasements	Cemetery	Community_Resources	1	5.0	\$-
DwellingsWithBasements	Comm_Center	Community_Resources	1	2.6	\$-
DwellingsWithBasements	Commercial	Commercial	105	6,234.6	\$55,279,717.00
DwellingsWithBasements	DOD	DOD	9	0.0	\$-
DwellingsWithBasements	Ed_Kto12	Community_Resources	4	56.3	\$820,539.00
DwellingsWithBasements	Fire_Station	EmergencyServices	2	3.5	\$-
DwellingsWithBasements	Fire_Station/Emergency_Med	EmergencyServices	1	1.1	\$500.00
DwellingsWithBasements	Grocery_Store	Community_Resources	1	1.8	\$673,963.00
DwellingsWithBasements	Health_Care	EmergencyServices	2	0.2	\$311,247.00
DwellingsWithBasements	Infrastructure_Mining	Other	3	269.1	\$930,210.00
DwellingsWithBasements	Manufacture_Industry	Energy	1	473.8	\$-
DwellingsWithBasements	Manufacture_Industry	Other	37	9,042.4	\$157,030,295.00
DwellingsWithBasements	Open_Space	Recreation	27	292.8	\$1,321,753.00
DwellingsWithBasements	PlaceofWorship	Community_Resources	7	99.1	\$568,673.00
DwellingsWithBasements	Res_Munufacture_Mobile_Hookups	Residential	149	3,264.1	\$30,989,680.00
DwellingsWithBasements	Residential	Energy	1	632.8	\$534,163.00
DwellingsWithBasements	Residential	Residential	3384	22,382.6	\$872,109,953.00

## 5.7.4.3 UNICORPORATED TOOELE COUNTY - RISK ASSESMENT RESULTS - PARCEL DATA

UNICORPORATED TOOELE COUNTY - CRITICAL INFRASTRUCTURE PARCEL DATA - POTENTIAL LOSS TABLE					
Hazard	Category	Type	# of Parcels	Sum Parcel Acres	Sum Total Market Value
DwellingsWithBasements	Residential_Commercial	Residential	8	792.0	\$2,003,969.00
DwellingsWithBasements	Residential_MultiFamily	Residential	171	43.7	\$28,023,408.00
DwellingsWithBasements	SITLA	SITLA	291	0.0	\$-
DwellingsWithBasements	StateofUtah	StateofUtah	14	0.0	\$-
DwellingsWithBasements	Tribal	Tribal	5	0.0	\$-
DwellingsWithBasements	USFS	USFS	39	0.0	\$-
DwellingsWithoutBasements	BLM	BLM	643	0.0	\$-
DwellingsWithoutBasements	Cemetery	Community_Resources	1	5.0	\$-
DwellingsWithoutBasements	Comm_Center	Community_Resources	1	2.6	\$-
DwellingsWithoutBasements	Commercial	Commercial	105	6,234.6	\$55,279,717.00
DwellingsWithoutBasements	DOD	DOD	9	0.0	\$-
DwellingsWithoutBasements	Ed_Kto12	Community_Resources	4	56.3	\$820,539.00
DwellingsWithoutBasements	Fire_Station	EmergencyServices	2	3.5	\$-
DwellingsWithoutBasements	Fire_Station/Emergency_Med	EmergencyServices	1	1.1	\$500.00
DwellingsWithoutBasements	Grocery_Store	Community_Resources	1	1.8	\$673,963.00
DwellingsWithoutBasements	Health_Care	EmergencyServices	2	0.2	\$311,247.00
DwellingsWithoutBasements	Manufacture_Industry	Energy	1	473.8	\$-
DwellingsWithoutBasements	PlaceofWorship	Community_Resources	7	99.1	\$568,673.00
DwellingsWithoutBasements	Residential	Energy	1	632.8	\$534,163.00
DwellingsWithoutBasements	Infrastructure_Mining	Other	3	269.1	\$930,210.00
DwellingsWithoutBasements	Manufacture_Industry	Other	37	9,042.4	\$157,030,295.00
DwellingsWithoutBasements	Open_Space	Recreation	27	292.8	\$1,321,753.00
DwellingsWithoutBasements	Res_Munufacture_Mobile_Hookups	Residential	149	3,264.1	\$30,989,680.00
DwellingsWithoutBasements	Residential	Residential	3384	22,382.6	\$872,109,953.00



## 5.7.4.3 UNICORPORATED TOOELE COUNTY - RISK ASSESMENT RESULTS - PARCEL DATA

UNICORPORATED TOOELE COUNTY - CRITICAL INFRASTRUCTURE PARCEL DATA - POTENTIAL LOSS TABLE					
Hazard	Category	Type	# of Parcels	Sum Parcel Acres	Sum Total Market Value
DwellingsWithoutBasements	Residential_Commercial	Residential	8	792.0	\$2,003,969.00
DwellingsWithoutBasements	Residential_MultiFamily	Residential	171	43.7	\$28,023,408.00
DwellingsWithoutBasements	SITLA	SITLA	291	0.0	\$-
DwellingsWithoutBasements	StateofUtah	StateofUtah	14	0.0	\$-
DwellingsWithoutBasements	Tribal	Tribal	5	0.0	\$-
DwellingsWithoutBasements	USFS	USFS	39	0.0	\$-
Erosion_OffRoadTrail	BLM	BLM	366	0.0	\$-
Erosion_OffRoadTrail	Comm_Center	Community_Resources	1	2.6	\$-
Erosion_OffRoadTrail	Commercial	Commercial	13	371.9	\$1,348,053.00
Erosion_OffRoadTrail	DOD	DOD	2	0.0	\$-
Erosion_OffRoadTrail	Health_Care	EmergencyServices	2	0.2	\$311,247.00
Erosion_RoadTrail	BLM	BLM	553	0.0	\$-
Erosion_RoadTrail	Cemetery	Community_Resources	1	5.0	\$-
Erosion_RoadTrail	Comm_Center	Community_Resources	1	2.6	\$-
Erosion_RoadTrail	Commercial	Commercial	66	3,086.6	\$42,843,008.00
Erosion_RoadTrail	DOD	DOD	9	0.0	\$-
Erosion_RoadTrail	Ed_Kto12	Community_Resources	1	7.4	\$712,989.00
Erosion_RoadTrail	Fire_Station	EmergencyServices	1	2.5	\$-
Erosion_RoadTrail	Fire_Station/Emergency_Med	EmergencyServices	1	1.1	\$500.00
Erosion_RoadTrail	Grocery_Store	Community_Resources	1	1.8	\$673,963.00
Erosion_RoadTrail	Health_Care	EmergencyServices	2	0.2	\$311,247.00
Erosion_RoadTrail	Manufacture_Industry	Energy	1	473.8	\$-
Erosion_RoadTrail	PlaceofWorship	Community_Resources	2	6.1	\$187,863.00
FaultHazardZone	BLM	BLM	135	0.0	\$-

## 5.7.4.3 UNICORPORATED TOOELE COUNTY - RISK ASSESMENT RESULTS - PARCEL DATA

UNICORPORATED TOOELE COUNTY - CRITICAL INFRASTRUCTURE PARCEL DATA - POTENTIAL LOSS TABLE					
Hazard	Category	Type	# of Parcels	Sum Parcel Acres	Sum Total Market Value
FaultHazardZone	Commercial	Commercial	6	160.9	\$3,488,251.00
FEMA_FloodZone	BLM	BLM	1	0.0	\$-
FEMA_FloodZone	Commercial	Commercial	2	162.0	\$503,238.00
FEMA_FloodZone	DOD	DOD	1	0.0	\$-
Flood_DamInundation	BLM	BLM	3	0.0	\$-
Flood_DamInundation	Commercial	Commercial	20	236.3	\$29,556,109.00
Flood_DamInundation	DOD	DOD	3	0.0	\$-
Flood_DamInundation	Fire_Station	EmergencyServices	1	1.0	\$-
Flood_DamInundation	PlaceofWorship	Community_Resources	1	4.7	\$159,000.00
Flood_DamInundation	Residential	Energy	1	632.8	\$534,163.00
Flood_GSL	BLM	BLM	17	0.0	\$-
Flood_GSL	Manufacture_Industry	Energy	1	473.8	\$-
Flood_GSL	Residential	Energy	1	632.8	\$534,163.00
Flood_SoilsPurdue	BLM	BLM	58	0.0	\$-
Flood_SoilsPurdue	Commercial	Commercial	1	52.1	\$1,222,317.00
Flood_SoilsPurdue	DOD	DOD	1	0.0	\$-
Flood_SoilsPurdue	PlaceofWorship	Community_Resources	1	3.0	\$-
Flood_SoilsPurdue	Residential	Energy	1	632.8	\$534,163.00
Flood_USUValleyBottom	BLM	BLM	26	0.0	\$-
Flood_USUValleyBottom	Commercial	Commercial	1	15.0	\$200,720.00
Flood_USUValleyBottom	Ed_Kto12	Community_Resources	1	10.5	\$-
Flood_USUValleyBottom	Fire_Station	EmergencyServices	1	36.0	\$1,660.00
Flood_USUValleyBottom	Residential	Energy	1	632.8	\$534,163.00
Flood_Wetland_Riparian	BLM	BLM	545	0.0	\$-

## 5.7.4.3 UNINCORPORATED TOOELE COUNTY - RISK ASSESMENT RESULTS - PARCEL DATA

UNINCORPORATED TOOELE COUNTY - CRITICAL INFRASTRUCTURE PARCEL DATA - POTENTIAL LOSS TABLE					
Hazard	Category	Type	# of Parcels	Sum Parcel Acres	Sum Total Market Value
Flood_Wetland_Riparian	Comm_Center	Community_Resources	1	2.6	\$-
Flood_Wetland_Riparian	Commercial	Commercial	47	2,621.2	\$34,729,056.00
Flood_Wetland_Riparian	DOD	DOD	6	0.0	\$-
Flood_Wetland_Riparian	Ed_Kto12	Community_Resources	1	33.3	\$-
Flood_Wetland_Riparian	Grocery_Store	Community_Resources	1	1.8	\$673,963.00
Flood_Wetland_Riparian	Manufacture_Industry	Energy	1	473.8	\$-
Flood_Wetland_Riparian	PlaceofWorship	Community_Resources	5	133.4	\$333,863.00
Flood_Wetland_Riparian	Residential	Energy	1	632.8	\$534,163.00
Landslide	BLM	BLM	29	0.0	\$-
Landslide	DOD	DOD	1	0.0	\$-
Liquefaction	BLM	BLM	7	0.0	\$-
Liquefaction	Commercial	Commercial	68	855.3	\$45,719,607.00
Liquefaction	Ed_Kto12	Community_Resources	4	56.3	\$820,539.00
Liquefaction	Ed_PreK	Community_Resources	2	0.9	\$938,397.00
Liquefaction	Fire_Station/Emergency_Med	EmergencyServices	1	1.1	\$500.00
Liquefaction	Grocery_Store	Community_Resources	1	1.8	\$673,963.00
Liquefaction	Health_Care	EmergencyServices	1	2.5	\$3,322,604.00
Liquefaction	Health_Care/Grocery_Store	EmergencyServices	1	4.1	\$4,227,979.00
Liquefaction	PlaceofWorship	Community_Resources	7	100.1	\$409,673.00
Liquefaction	Police Department	EmergencyServices	1	1.7	\$1,738,331.00
Liquefaction	Residential	Energy	1	632.8	\$534,163.00
RMRS_WildFireHP_2020	BLM	BLM	560	0.0	\$-
RMRS_WildFireHP_2020	Cemetery	Community_Resources	1	5.0	\$-
RMRS_WildFireHP_2020	Comm_Center	Community_Resources	1	2.6	\$-

## 5.7.4.3 UNICORPORATED TOOELE COUNTY - RISK ASSESMENT RESULTS - PARCEL DATA

UNICORPORATED TOOELE COUNTY - CRITICAL INFRASTRUCTURE PARCEL DATA - POTENTIAL LOSS TABLE					
Hazard	Category	Type	# of Parcels	Sum Parcel Acres	Sum Total Market Value
RMRS_WildFireHP_2020	Commercial	Commercial	112	2,009.0	\$91,189,502.00
RMRS_WildFireHP_2020	DOD	DOD	8	0.0	\$-
RMRS_WildFireHP_2020	Ed_Kto12	Community_Resources	10	56.6	\$4,743,082.00
RMRS_WildFireHP_2020	Ed_PreK	Community_Resources	1	0.3	\$45,870.00
RMRS_WildFireHP_2020	Fire_Station	EmergencyServices	3	39.5	\$1,660.00
RMRS_WildFireHP_2020	Fire_Station/Emergency_Med	EmergencyServices	3	3.5	\$500.00
RMRS_WildFireHP_2020	Health_Care	EmergencyServices	2	0.2	\$311,247.00
RMRS_WildFireHP_2020	Health_Care/Grocery_Store	EmergencyServices	1	4.1	\$4,227,979.00
RMRS_WildFireHP_2020	Manufacture_Industry	Energy	1	473.8	\$-
RMRS_WildFireHP_2020	PlaceofWorship	Community_Resources	6	53.5	\$584,463.00
RMRS_WildFireHP_2020	Police Department/Correctional_Fac	EmergencyServices	1	10.5	\$-
RMRS_WildFireHP_2020	Residential	Energy	1	632.8	\$534,163.00
SGID_EngineeringPS	BLM	BLM	191	0.0	\$-
SGID_EngineeringPS	Comm_Center	Community_Resources	1	2.6	\$-
SGID_EngineeringPS	Commercial	Commercial	17	2,011.6	\$2,216,343.00
SGID_EngineeringPS	DOD	DOD	3	0.0	\$-
SGID_EngineeringPS	Fire_Station	EmergencyServices	1	2.5	\$-
SGID_EngineeringPS	Health_Care	EmergencyServices	2	0.2	\$311,247.00
SGID_EngineeringPS	Residential	Energy	1	632.8	\$534,163.00
SteepSlope	BLM	BLM	395	0.0	\$-
SteepSlope	Comm_Center	Community_Resources	1	2.6	\$-
SteepSlope	Commercial	Commercial	13	635.9	\$1,652,782.00
SteepSlope	DOD	DOD	4	0.0	\$-
WildlifeAuto	BLM	BLM	1	0.0	\$-



## 5.7.4.4 UNICORPORATED TOOELE COUNTY - RISK ASSESMENT RESULTS - LINE DATA

UNICORP. TOOELE COUNTY - CRITICAL INFRASTRUCTURE LINE DATA - POTENTIAL LOSS TABLE			
Hazard	Category	Type	Miles
AlluvialFan	Energy	ElectricPowerTransmissionLine	177.6
AlluvialFan	Energy	Pipeline_NaturalGas	32.5
AlluvialFan	Energy	Pipeline_Petro	58.9
AlluvialFan	Natural	StreamRiver_Ephemeral	88.6
AlluvialFan	Natural	StreamRiver_Intermittent	2.1
AlluvialFan	Natural	StreamRiver_Perennial	2.0
AlluvialFan	Recreation	Trail_RoadConcurrent	4.7
AlluvialFan	Recreation	Trails	33.1
AlluvialFan	Transportation	Road	18.6
AlluvialFan	Transportation	Road_A	7.1
AlluvialFan	Transportation	Road_B	12.7
AlluvialFan	Transportation	Road_D	43.3
AlluvialFan	Transportation	Road_X	0.2
AlluvialFan	Water	Canal_ArtificialPath	0.0
AlluvialFan	Water	Canal_Ditch	0.5
AlluvialFan	Water	Connector	19.0
AvalanchTerrain	Energy	ElectricPowerTransmissionLine	119.0
AvalanchTerrain	Energy	Pipeline_NaturalGas	56.2
AvalanchTerrain	Energy	Pipeline_Petro	58.9
AvalanchTerrain	Natural	StreamRiver_Ephemeral	2,010.3
AvalanchTerrain	Natural	StreamRiver_Intermittent	54.8
AvalanchTerrain	Natural	StreamRiver_Perennial	117.4

UNICORP. TOOELE COUNTY - CRITICAL INFRASTRUCTURE LINE DATA - POTENTIAL LOSS TABLE			
Hazard	Category	Type	Miles
AvalanchTerrain	Recreation	Trail_RoadConcurrent	62.1
AvalanchTerrain	Recreation	Trails	177.7
AvalanchTerrain	Recreation	Trails_Hiking	36.0
AvalanchTerrain	Recreation	Trails_HikingandBiking	17.1
AvalanchTerrain	Transportation	Road	58.7
AvalanchTerrain	Transportation	Road_A	1.0
AvalanchTerrain	Transportation	Road_B	55.1
AvalanchTerrain	Transportation	Road_D	155.9
AvalanchTerrain	Water	Canal_ArtificialPath	0.1
AvalanchTerrain	Water	Canal_Ditch	2.5
AvalanchTerrain	Water	Connector	4.5
AvalanchTerrain	Water	Pipeline_AqueductUnderground	1.2
AvalanchTerrain	Water	Pipeline_GeneralCase_Underground	7.0
DebrisFlow	Energy	ElectricPowerTransmissionLine	115.8
DebrisFlow	Energy	Pipeline_NaturalGas	38.5
DebrisFlow	Energy	Pipeline_Petro	58.9
DebrisFlow	Natural	StreamRiver_Ephemeral	365.6
DebrisFlow	Natural	StreamRiver_Intermittent	21.5
DebrisFlow	Natural	StreamRiver_Perennial	12.1
DebrisFlow	Recreation	Trail_RoadConcurrent	15.9
DebrisFlow	Recreation	Trails	79.4
DebrisFlow	Recreation	Trails_Hiking	12.2
DebrisFlow	Recreation	Trails_HikingandBiking	7.5
DebrisFlow	Transportation	Road	9.6

## 5.7.4.4 UNICORPORATED TOOELE COUNTY I RISK ASSESMENT RESULTS I LINE DATA

UNICORP. TOOELE COUNTY - CRITICAL INFRASTRUCTURE LINE DATA - POTENTIAL LOSS TABLE			
Hazard	Category	Type	Miles
DebrisFlow	Transportation	Road_B	23.8
DebrisFlow	Transportation	Road_C	0.3
DebrisFlow	Transportation	Road_D	59.6
DebrisFlow	Water	Canal_ArtificialPath	0.1
DebrisFlow	Water	Connector	3.0
DebrisFlow	Water	Pipeline_AqueductUnderground	1.2
DebrisFlow	Water	Pipeline_GeneralCase_Underground	14.6
DwellingsWithBasements	Energy	ElectricPowerTransmissionLine	380.0
DwellingsWithBasements	Energy	Pipeline_NaturalGas	105.9
DwellingsWithBasements	Energy	Pipeline_Petro	58.9
DwellingsWithBasements	Natural	StreamRiver_Ephemeral	7,473.2
DwellingsWithBasements	Natural	StreamRiver_Intermittent	277.4
DwellingsWithBasements	Natural	StreamRiver_Perennial	545.4
DwellingsWithBasements	Recreation	Trail_RoadConcurrent	710.2
DwellingsWithBasements	Recreation	Trails	311.5
DwellingsWithBasements	Recreation	Trails_Hiking	40.4
DwellingsWithBasements	Recreation	Trails_HikingandBiking	17.6
DwellingsWithBasements	Transportation	Road	476.7
DwellingsWithBasements	Transportation	Road_A	340.3
DwellingsWithBasements	Transportation	Road_B	1,037.7
DwellingsWithBasements	Transportation	Road_C	7.6
DwellingsWithBasements	Transportation	Road_D	2,841.9
DwellingsWithBasements	Transportation	Road_F	5.1

UNICORP. TOOELE COUNTY - CRITICAL INFRASTRUCTURE LINE DATA - POTENTIAL LOSS TABLE			
Hazard	Category	Type	Miles
DwellingsWithBasements	Transportation	Road_P	1.7
DwellingsWithBasements	Transportation	Road_X	1.3
DwellingsWithBasements	Water	Canal_ArtificialPath	120.3
DwellingsWithBasements	Water	Canal_Brackish Ditch	7.7
DwellingsWithBasements	Water	Canal_Ditch	188.3
DwellingsWithBasements	Water	Canal_Pond Ditch	35.4
DwellingsWithBasements	Water	Connector	345.8
DwellingsWithBasements	Water	Dam	2.0
DwellingsWithBasements	Water	Pipeline_Aqueduct	11.6
DwellingsWithBasements	Water	Pipeline_AqueductUnderground	1.2
DwellingsWithBasements	Water	Pipeline_GeneralCase_Underground	44.3
DwellingsWithBasements	Water	Pipeline_Siphon	0.3
DwellingsWithoutBasements	Energy	ElectricPowerTransmissionLine	380.0
DwellingsWithoutBasements	Energy	Pipeline_NaturalGas	105.9
DwellingsWithoutBasements	Energy	Pipeline_Petro	58.9
DwellingsWithoutBasements	Natural	StreamRiver_Ephemeral	7,473.2
DwellingsWithoutBasements	Natural	StreamRiver_Intermittent	277.4
DwellingsWithoutBasements	Natural	StreamRiver_Perennial	545.4
DwellingsWithoutBasements	Recreation	Trail_RoadConcurrent	710.2
DwellingsWithoutBasements	Recreation	Trails	311.5
DwellingsWithoutBasements	Recreation	Trails_Hiking	40.4
DwellingsWithoutBasements	Recreation	Trails_HikingandBiking	17.6
DwellingsWithoutBasements	Transportation	Road	476.7

## 5.7.4.4 UNICORPORATED TOOELE COUNTY I RISK ASSESMENT RESULTS I LINE DATA

UNICORP. TOOELE COUNTY - CRITICAL INFRASTRUCTURE LINE DATA - POTENTIAL LOSS TABLE			
Hazard	Category	Type	Miles
DwellingsWithoutBasements	Transportation	Road_A	340.3
DwellingsWithoutBasements	Transportation	Road_B	1,037.7
DwellingsWithoutBasements	Transportation	Road_C	7.6
DwellingsWithoutBasements	Transportation	Road_D	2,841.9
DwellingsWithoutBasements	Transportation	Road_F	5.1
DwellingsWithoutBasements	Transportation	Road_P	1.7
DwellingsWithoutBasements	Transportation	Road_X	1.3
DwellingsWithoutBasements	Water	Canal_ArtificialPath	120.3
DwellingsWithoutBasements	Water	Canal_Brackish Ditch	7.7
DwellingsWithoutBasements	Water	Canal_Ditch	188.3
DwellingsWithoutBasements	Water	Canal_Pond Ditch	35.4
DwellingsWithoutBasements	Water	Connector	345.8
DwellingsWithoutBasements	Water	Dam	2.0
DwellingsWithoutBasements	Water	Pipeline_Aqueduct	11.6
DwellingsWithoutBasements	Water	Pipeline_AqueductUnderground	1.2
DwellingsWithoutBasements	Water	Pipeline_GeneralCase_Underground	44.3
DwellingsWithoutBasements	Water	Pipeline_Siphon	0.3
Erosion_OffRoadTrail	Energy	ElectricPowerTransmissionLine	229.6
Erosion_OffRoadTrail	Energy	Pipeline_NaturalGas	65.7
Erosion_OffRoadTrail	Energy	Pipeline_Petro	58.9
Erosion_OffRoadTrail	Natural	StreamRiver_Ephemeral	3,625.5
Erosion_OffRoadTrail	Natural	StreamRiver_Intermittent	106.8
Erosion_OffRoadTrail	Natural	StreamRiver_Perennial	173.7

UNICORP. TOOELE COUNTY - CRITICAL INFRASTRUCTURE LINE DATA - POTENTIAL LOSS TABLE			
Hazard	Category	Type	Miles
Erosion_OffRoadTrail	Recreation	Trail_RoadConcurrent	253.5
Erosion_OffRoadTrail	Recreation	Trails	302.9
Erosion_OffRoadTrail	Recreation	Trails_Hiking	40.4
Erosion_OffRoadTrail	Recreation	Trails_HikingandBiking	17.3
Erosion_OffRoadTrail	Transportation	Road	97.3
Erosion_OffRoadTrail	Transportation	Road_A	8.8
Erosion_OffRoadTrail	Transportation	Road_B	204.7
Erosion_OffRoadTrail	Transportation	Road_D	935.0
Erosion_OffRoadTrail	Transportation	Road_X	0.5
Erosion_OffRoadTrail	Water	Canal_ArtificialPath	2.8
Erosion_OffRoadTrail	Water	Canal_Ditch	7.1
Erosion_OffRoadTrail	Water	Connector	29.0
Erosion_OffRoadTrail	Water	Pipeline_AqueductUnderground	1.2
Erosion_OffRoadTrail	Water	Pipeline_GeneralCase_Underground	21.0
Erosion_RoadTrail	Energy	ElectricPowerTransmissionLine	305.9
Erosion_RoadTrail	Energy	Pipeline_NaturalGas	66.7
Erosion_RoadTrail	Energy	Pipeline_Petro	58.9
Erosion_RoadTrail	Natural	StreamRiver_Ephemeral	6,022.2
Erosion_RoadTrail	Natural	StreamRiver_Intermittent	220.9
Erosion_RoadTrail	Natural	StreamRiver_Perennial	431.4
Erosion_RoadTrail	Recreation	Trail_RoadConcurrent	698.6
Erosion_RoadTrail	Recreation	Trails	310.8
Erosion_RoadTrail	Recreation	Trails_Hiking	40.4
Erosion_RoadTrail	Recreation	Trails_HikingandBiking	17.6

## 5.7.4.4 UNICORPORATED TOOELE COUNTY I RISK ASSESMENT RESULTS I LINE DATA

UNICORP. TOOELE COUNTY - CRITICAL INFRASTRUCTURE LINE DATA - POTENTIAL LOSS TABLE			
Hazard	Category	Type	Miles
Erosion_RoadTrail	Transportation	Road	374.0
Erosion_RoadTrail	Transportation	Road_A	159.5
Erosion_RoadTrail	Transportation	Road_B	795.6
Erosion_RoadTrail	Transportation	Road_C	2.1
Erosion_RoadTrail	Transportation	Road_D	2,576.6
Erosion_RoadTrail	Transportation	Road_F	2.0
Erosion_RoadTrail	Transportation	Road_X	0.8
Erosion_RoadTrail	Water	Canal_ArtificialPath	18.2
Erosion_RoadTrail	Water	Canal_Ditch	64.0
Erosion_RoadTrail	Water	Connector	196.6
Erosion_RoadTrail	Water	Dam	2.0
Erosion_RoadTrail	Water	Pipeline_Aqueduct	5.5
Erosion_RoadTrail	Water	Pipeline_AqueductUnderground	1.2
Erosion_RoadTrail	Water	Pipeline_GeneralCase_Underground	42.8
FaultHazardZone	Energy	ElectricPowerTransmissionLine	193.8
FaultHazardZone	Energy	Pipeline_NaturalGas	56.2
FaultHazardZone	Energy	Pipeline_Petro	58.9
FaultHazardZone	Natural	StreamRiver_Ephemeral	833.5
FaultHazardZone	Natural	StreamRiver_Intermittent	28.6
FaultHazardZone	Natural	StreamRiver_Perennial	219.2
FaultHazardZone	Recreation	Trail_RoadConcurrent	139.1
FaultHazardZone	Recreation	Trails	88.5
FaultHazardZone	Recreation	Trails_Hiking	2.5

UNICORP. TOOELE COUNTY - CRITICAL INFRASTRUCTURE LINE DATA - POTENTIAL LOSS TABLE			
Hazard	Category	Type	Miles
FaultHazardZone	Transportation	Road	29.7
FaultHazardZone	Transportation	Road_A	68.5
FaultHazardZone	Transportation	Road_B	85.0
FaultHazardZone	Transportation	Road_C	0.8
FaultHazardZone	Transportation	Road_D	387.1
FaultHazardZone	Water	Canal_ArtificialPath	40.6
FaultHazardZone	Water	Canal_Ditch	11.2
FaultHazardZone	Water	Connector	72.0
FaultHazardZone	Water	Pipeline_Aqueduct	9.5
FaultHazardZone	Water	Pipeline_GeneralCase_Underground	6.3
FEMA_FloodZone	Energy	ElectricPowerTransmissionLine	115.5
FEMA_FloodZone	Energy	Pipeline_NaturalGas	19.5
FEMA_FloodZone	Natural	StreamRiver_Ephemeral	4.6
FEMA_FloodZone	Natural	StreamRiver_Intermittent	1.2
FEMA_FloodZone	Natural	StreamRiver_Perennial	2.2
FEMA_FloodZone	Transportation	Road	0.2
FEMA_FloodZone	Transportation	Road_A	1.1
FEMA_FloodZone	Transportation	Road_B	10.8
FEMA_FloodZone	Transportation	Road_C	0.4
FEMA_FloodZone	Water	Canal_ArtificialPath	8.6
FEMA_FloodZone	Water	Canal_Ditch	0.3
FEMA_FloodZone	Water	Connector	1.4
Flood_DamInundation	Energy	ElectricPowerTransmissionLine	47.3



## 5.7.4.4 UNICORPORATED TOOELE COUNTY I RISK ASSESMENT RESULTS I LINE DATA

UNICORP. TOOELE COUNTY - CRITICAL INFRASTRUCTURE LINE DATA - POTENTIAL LOSS TABLE			
Hazard	Category	Type	Miles
Flood_DamInundation	Energy	Pipeline_NaturalGas	28.8
Flood_DamInundation	Natural	StreamRiver_Ephemeral	67.8
Flood_DamInundation	Natural	StreamRiver_Intermittent	19.7
Flood_DamInundation	Natural	StreamRiver_Perennial	5.3
Flood_DamInundation	Recreation	Trail_RoadConcurrent	9.4
Flood_DamInundation	Transportation	Road	52.2
Flood_DamInundation	Transportation	Road_A	41.0
Flood_DamInundation	Transportation	Road_B	25.7
Flood_DamInundation	Transportation	Road_C	9.1
Flood_DamInundation	Transportation	Road_D	16.6
Flood_DamInundation	Water	Canal_ArtificialPath	16.3
Flood_DamInundation	Water	Canal_Ditch	11.4
Flood_DamInundation	Water	Connector	21.6
Flood_GSL	Energy	ElectricPowerTransmissionLine	5.2
Flood_GSL	Energy	Pipeline_NaturalGas	17.7
Flood_GSL	Natural	StreamRiver_Ephemeral	40.7
Flood_GSL	Natural	StreamRiver_Intermittent	5.0
Flood_GSL	Transportation	Road	13.6
Flood_GSL	Transportation	Road_A	49.5
Flood_GSL	Transportation	Road_B	3.3
Flood_GSL	Transportation	Road_D	27.0
Flood_GSL	Water	Canal_ArtificialPath	114.9
Flood_GSL	Water	Canal_Ditch	39.9

UNICORP. TOOELE COUNTY - CRITICAL INFRASTRUCTURE LINE DATA - POTENTIAL LOSS TABLE			
Hazard	Category	Type	Miles
Flood_GSL	Water	Connector	14.8
Flood_SoilsPurdue	Energy	ElectricPowerTransmissionLine	201.6
Flood_SoilsPurdue	Energy	Pipeline_NaturalGas	46.7
Flood_SoilsPurdue	Energy	Pipeline_Petro	58.9
Flood_SoilsPurdue	Natural	StreamRiver_Ephemeral	724.4
Flood_SoilsPurdue	Natural	StreamRiver_Intermittent	56.0
Flood_SoilsPurdue	Natural	StreamRiver_Perennial	41.3
Flood_SoilsPurdue	Recreation	Trail_RoadConcurrent	31.9
Flood_SoilsPurdue	Recreation	Trails	38.7
Flood_SoilsPurdue	Transportation	Road	43.7
Flood_SoilsPurdue	Transportation	Road_A	77.8
Flood_SoilsPurdue	Transportation	Road_B	96.7
Flood_SoilsPurdue	Transportation	Road_C	0.3
Flood_SoilsPurdue	Transportation	Road_D	89.4
Flood_SoilsPurdue	Transportation	Road_F	2.4
Flood_SoilsPurdue	Transportation	Road_X	0.3
Flood_SoilsPurdue	Water	Canal_ArtificialPath	27.7
Flood_SoilsPurdue	Water	Canal_Ditch	48.2
Flood_SoilsPurdue	Water	Connector	51.4
Flood_SoilsPurdue	Water	Pipeline_Aqueduct	3.3
Flood_SoilsPurdue	Water	Pipeline_GeneralCase_Underground	14.2
Flood_USUValleyBottom	Energy	ElectricPowerTransmissionLine	83.9
Flood_USUValleyBottom	Energy	Pipeline_NaturalGas	17.3

## 5.7.4.4 UNICORPORATED TOOELE COUNTY I RISK ASSESMENT RESULTS I LINE DATA

UNICORP. TOOELE COUNTY - CRITICAL INFRASTRUCTURE LINE DATA - POTENTIAL LOSS TABLE			
Hazard	Category	Type	Miles
Flood_USUValleyBottom	Natural	StreamRiver_Ephemeral	217.2
Flood_USUValleyBottom	Natural	StreamRiver_Intermittent	38.0
Flood_USUValleyBottom	Natural	StreamRiver_Perennial	135.2
Flood_USUValleyBottom	Recreation	Trail_RoadConcurrent	11.9
Flood_USUValleyBottom	Recreation	Trails	110.3
Flood_USUValleyBottom	Recreation	Trails_Hiking	3.5
Flood_USUValleyBottom	Transportation	Road	8.1
Flood_USUValleyBottom	Transportation	Road_A	2.3
Flood_USUValleyBottom	Transportation	Road_B	47.0
Flood_USUValleyBottom	Transportation	Road_D	65.2
Flood_USUValleyBottom	Water	Canal_ArtificialPath	4.4
Flood_USUValleyBottom	Water	Canal_Ditch	14.9
Flood_USUValleyBottom	Water	Connector	10.7
Flood_USUValleyBottom	Water	Pipeline_GeneralCase_Underground	20.7
Flood_Wetland_Riparian	Energy	ElectricPowerTransmissionLine	360.5
Flood_Wetland_Riparian	Energy	Pipeline_NaturalGas	106.0
Flood_Wetland_Riparian	Energy	Pipeline_Petro	58.9
Flood_Wetland_Riparian	Natural	StreamRiver_Ephemeral	8,297.3
Flood_Wetland_Riparian	Natural	StreamRiver_Intermittent	356.6
Flood_Wetland_Riparian	Natural	StreamRiver_Perennial	565.3
Flood_Wetland_Riparian	Recreation	Trail_RoadConcurrent	490.2
Flood_Wetland_Riparian	Recreation	Trails	282.0
Flood_Wetland_Riparian	Recreation	Trails_Hiking	36.1
Flood_Wetland_Riparian	Recreation	Trails_HikingandBiking	16.5

UNICORP. TOOELE COUNTY - CRITICAL INFRASTRUCTURE LINE DATA - POTENTIAL LOSS TABLE			
Hazard	Category	Type	Miles
Flood_Wetland_Riparian	Transportation	Road	279.2
Flood_Wetland_Riparian	Transportation	Road_A	260.9
Flood_Wetland_Riparian	Transportation	Road_B	873.7
Flood_Wetland_Riparian	Transportation	Road_C	2.1
Flood_Wetland_Riparian	Transportation	Road_D	1,806.7
Flood_Wetland_Riparian	Transportation	Road_F	4.4
Flood_Wetland_Riparian	Transportation	Road_P	1.6
Flood_Wetland_Riparian	Transportation	Road_X	0.4
Flood_Wetland_Riparian	Water	Canal_ArtificialPath	280.5
Flood_Wetland_Riparian	Water	Canal_BP-2 Brine Ditch	5.5
Flood_Wetland_Riparian	Water	Canal_BP-5 Brine Ditch	13.1
Flood_Wetland_Riparian	Water	Canal_BP-7 Brine Ditch	2.2
Flood_Wetland_Riparian	Water	Canal_Brackish Ditch	7.7
Flood_Wetland_Riparian	Water	Canal_DBW-21 Brine Ditch	3.6
Flood_Wetland_Riparian	Water	Canal_DBW-22 Brine Ditch	5.7
Flood_Wetland_Riparian	Water	Canal_Ditch	288.1
Flood_Wetland_Riparian	Water	Canal_Pond Ditch	116.2
Flood_Wetland_Riparian	Water	Canal_Salt Laydown Ditch	5.8
Flood_Wetland_Riparian	Water	Connector	467.9
Flood_Wetland_Riparian	Water	Dam	2.0
Flood_Wetland_Riparian	Water	Pipeline_Aqueduct	11.2
Flood_Wetland_Riparian	Water	Pipeline_AqueductUnderground	1.2
Flood_Wetland_Riparian	Water	Pipeline_GeneralCase_Underground	50.5

## 5.7.4.4 UNICORPORATED TOOELE COUNTY I RISK ASSESMENT RESULTS I LINE DATA

UNICORP. TOOELE COUNTY - CRITICAL INFRASTRUCTURE LINE DATA - POTENTIAL LOSS TABLE			
Hazard	Category	Type	Miles
Flood_Wetland_Riparian	Water	Pipeline_Siphon	0.7
Landslide	Energy	ElectricPowerTransmissionLine	13.0
Landslide	Energy	Pipeline_Petro	58.9
Landslide	Natural	StreamRiver_Ephemeral	101.9
Landslide	Natural	StreamRiver_Intermittent	3.4
Landslide	Natural	StreamRiver_Perennial	6.3
Landslide	Recreation	Trail_RoadConcurrent	3.2
Landslide	Recreation	Trails	38.8
Landslide	Recreation	Trails_Hiking	11.1
Landslide	Recreation	Trails_HikingandBiking	6.3
Landslide	Transportation	Road	4.8
Landslide	Transportation	Road_A	1.0
Landslide	Transportation	Road_B	10.7
Landslide	Transportation	Road_D	10.0
Landslide	Water	Canal_ArtificialPath	0.7
Landslide	Water	Connector	1.9
Liquefaction	Energy	ElectricPowerTransmissionLine	69.3
Liquefaction	Energy	Pipeline_NaturalGas	61.0
Liquefaction	Energy	Pipeline_Petro	58.9
Liquefaction	Natural	StreamRiver_Ephemeral	47.2
Liquefaction	Natural	StreamRiver_Intermittent	9.2
Liquefaction	Natural	StreamRiver_Perennial	4.5
Liquefaction	Transportation	Road	12.7
Liquefaction	Transportation	Road_A	94.4

UNICORP. TOOELE COUNTY - CRITICAL INFRASTRUCTURE LINE DATA - POTENTIAL LOSS TABLE			
Hazard	Category	Type	Miles
Liquefaction	Transportation	Road_B	80.9
Liquefaction	Transportation	Road_C	1.9
Liquefaction	Transportation	Road_D	12.3
Liquefaction	Transportation	Road_P	0.5
Liquefaction	Water	Canal_ArtificialPath	34.3
Liquefaction	Water	Canal_Ditch	57.9
Liquefaction	Water	Connector	34.0
Liquefaction	Water	Pipeline_Aqueduct	2.4
Liquefaction	Water	Pipeline_GeneralCase_Underground	1.7
RMRS_WildFireHP_2020	Energy	ElectricPowerTransmissionLine	374.0
RMRS_WildFireHP_2020	Energy	Pipeline_NaturalGas	106.0
RMRS_WildFireHP_2020	Energy	Pipeline_Petro	58.9
RMRS_WildFireHP_2020	Natural	StreamRiver_Ephemeral	5,436.7
RMRS_WildFireHP_2020	Natural	StreamRiver_Intermittent	303.4
RMRS_WildFireHP_2020	Natural	StreamRiver_Perennial	514.4
RMRS_WildFireHP_2020	Recreation	Trail_RoadConcurrent	741.9
RMRS_WildFireHP_2020	Recreation	Trails	292.8
RMRS_WildFireHP_2020	Recreation	Trails_Hiking	40.4
RMRS_WildFireHP_2020	Recreation	Trails_HikingandBiking	17.3
RMRS_WildFireHP_2020	Transportation	Road	488.0
RMRS_WildFireHP_2020	Transportation	Road_A	231.3
RMRS_WildFireHP_2020	Transportation	Road_B	885.6
RMRS_WildFireHP_2020	Transportation	Road_C	12.3
RMRS_WildFireHP_2020	Transportation	Road_D	2,664.6

## 5.7.4.4 UNICORPORATED TOOELE COUNTY I RISK ASSESMENT RESULTS I LINE DATA

UNICORP. TOOELE COUNTY - CRITICAL INFRASTRUCTURE LINE DATA - POTENTIAL LOSS TABLE			
Hazard	Category	Type	Miles
RMRS_WildFireHP_2020	Transportation	Road_P	1.7
RMRS_WildFireHP_2020	Transportation	Road_X	1.3
RMRS_WildFireHP_2020	Water	Canal_ArtificialPath	19.0
RMRS_WildFireHP_2020	Water	Canal_Ditch	83.7
RMRS_WildFireHP_2020	Water	Connector	386.1
RMRS_WildFireHP_2020	Water	Dam	1.0
RMRS_WildFireHP_2020	Water	Pipeline_Aqueduct	10.7
RMRS_WildFireHP_2020	Water	Pipeline_AqueductUnderground	1.2
RMRS_WildFireHP_2020	Water	Pipeline_GeneralCase_Underground	31.9
SGID_EngineeringPS	Energy	ElectricPowerTransmissionLine	176.9
SGID_EngineeringPS	Energy	Pipeline_NaturalGas	38.6
SGID_EngineeringPS	Natural	StreamRiver_Ephemeral	1,088.5
SGID_EngineeringPS	Natural	StreamRiver_Intermittent	22.6
SGID_EngineeringPS	Natural	StreamRiver_Perennial	32.7
SGID_EngineeringPS	Recreation	Trail_RoadConcurrent	101.2
SGID_EngineeringPS	Recreation	Trails	216.0
SGID_EngineeringPS	Recreation	Trails_Hiking	23.8
SGID_EngineeringPS	Recreation	Trails_HikingandBiking	14.1
SGID_EngineeringPS	Transportation	Road	107.7
SGID_EngineeringPS	Transportation	Road_A	87.7
SGID_EngineeringPS	Transportation	Road_B	110.8
SGID_EngineeringPS	Transportation	Road_D	273.1
SGID_EngineeringPS	Transportation	Road_X	0.6
SGID_EngineeringPS	Water	Canal_ArtificialPath	0.9

UNICORP. TOOELE COUNTY - CRITICAL INFRASTRUCTURE LINE DATA - POTENTIAL LOSS TABLE			
Hazard	Category	Type	Miles
SGID_EngineeringPS	Water	Canal_Ditch	26.7
SGID_EngineeringPS	Water	Connector	24.3
SteepSlope	Energy	ElectricPowerTransmissionLine	222.5
SteepSlope	Energy	Pipeline_NaturalGas	65.7
SteepSlope	Energy	Pipeline_Petro	58.9
SteepSlope	Natural	StreamRiver_Ephemeral	3,570.3
SteepSlope	Natural	StreamRiver_Intermittent	128.3
SteepSlope	Natural	StreamRiver_Perennial	231.1
SteepSlope	Recreation	Trail_RoadConcurrent	159.7
SteepSlope	Recreation	Trails	265.0
SteepSlope	Recreation	Trails_Hiking	40.4
SteepSlope	Recreation	Trails_HikingandBiking	17.3
SteepSlope	Transportation	Road	68.8
SteepSlope	Transportation	Road_A	33.1
SteepSlope	Transportation	Road_B	127.3
SteepSlope	Transportation	Road_C	0.3
SteepSlope	Transportation	Road_D	523.2
SteepSlope	Transportation	Road_X	0.4
SteepSlope	Water	Canal_ArtificialPath	0.1
SteepSlope	Water	Canal_Ditch	5.4
SteepSlope	Water	Connector	17.2
SteepSlope	Water	Pipeline_AqueductUnderground	1.2
SteepSlope	Water	Pipeline_GeneralCase_Underground	21.5
WildlifeAuto	Energy	ElectricPowerTransmissionLine	141.4

## 5.7.4.4 UNICORPORATED TOOELE COUNTY I RISK ASSESMENT RESULTS I LINE DATA

UNICORP. TOOELE COUNTY - CRITICAL INFRASTRUCTURE LINE DATA - POTENTIAL LOSS TABLE			
Hazard	Category	Type	Miles
WildlifeAuto	Energy	Pipeline_NaturalGas	17.5
WildlifeAuto	Energy	Pipeline_Petro	58.9
WildlifeAuto	Natural	StreamRiver_Ephemeral	2.1
WildlifeAuto	Transportation	Road	0.3
WildlifeAuto	Transportation	Road_A	3.2
WildlifeAuto	Transportation	Road_B	0.5
WildlifeAuto	Transportation	Road_C	0.1
WildlifeAuto	Transportation	Road_D	2.8
WildlifeAuto	Water	Connector	2.6



## 5.7.4.5 UNICORPORATED TOOELE COUNTY I RISK ASSESMENT RESULTS I AREA DATA

UNICORP. TOOELE COUNTY - CRITICAL INFRASTRUCTURE AREA DATA - POTENTIAL LOSS TABLE			
Hazard	Category	Type	Acres
AlluvialFan	Agricultural	Agriculture_Parcel	1,386.5
AlluvialFan	Agricultural	AgricultureWRLA_DryCrop	1,205.8
AlluvialFan	Agricultural	AgricultureWRLA_Food	88.5
AlluvialFan	Agricultural	AgricultureWRLU_Sprinkler	116.1
AlluvialFan	Agricultural	AgricultureWRLU_SubIrrigated	0.9
AlluvialFan	Agricultural	GrazingAllotment	89,182.1
AlluvialFan	Natural	LakePond_Intermittent	0.9
AlluvialFan	Natural	LakePond_Perennial	1.2
AlluvialFan	Natural	Riparian	4.2
AlluvialFan	Natural	Wetland	788.6
AlluvialFan	Water	GWPZone_1	0.7
AlluvialFan	Water	GWPZone_2	1,123.0
AlluvialFan	Water	GWPZone_3	7,620.5
AlluvialFan	Water	GWPZone_4	61,554.7
AlluvialFan	Water	RetailCulinaryWaterServiceArea	18,248.9
AvalanchTerrain	Agricultural	Agriculture_Parcel	184.7
AvalanchTerrain	Agricultural	AgricultureWRLU_Sprinkler	3.6
AvalanchTerrain	Agricultural	GrazingAllotment	1,977,181.2
AvalanchTerrain	Natural	LakePond_Intermittent	0.2
AvalanchTerrain	Natural	LakePond_Perennial	2.9
AvalanchTerrain	Natural	Reservoir_DisposalEarthen	51.6
AvalanchTerrain	Natural	Wetland	14,818.7
AvalanchTerrain	Water	GWPZone_1	7.9
AvalanchTerrain	Water	GWPZone_2	9,098.5

UNICORP. TOOELE COUNTY - CRITICAL INFRASTRUCTURE AREA DATA - POTENTIAL LOSS TABLE			
Hazard	Category	Type	Acres
AvalanchTerrain	Water	GWPZone_3	22,098.6
AvalanchTerrain	Water	GWPZone_4	155,602.4
AvalanchTerrain	Water	RetailCulinaryWaterServiceArea	63,241.7
AvalanchTerrain	Water	SurfaceWaterProtectionZone	1,783.9
AvalanchTerrain	Water	TransientNCZone_4	1,961.3
DebrisFlow	Agricultural	Agriculture_Parcel	57.2
DebrisFlow	Agricultural	AgricultureWRLA_DryCrop	49.2
DebrisFlow	Agricultural	GrazingAllotment	122,731.5
DebrisFlow	Natural	LakePond_Perennial	0.9
DebrisFlow	Natural	Riparian	535.7
DebrisFlow	Natural	Wetland	1,492.4
DebrisFlow	Water	GWPZone_1	8.6
DebrisFlow	Water	GWPZone_2	8,375.7
DebrisFlow	Water	GWPZone_3	21,270.7
DebrisFlow	Water	GWPZone_4	154,413.1
DebrisFlow	Water	RetailCulinaryWaterServiceArea	20,434.9
DebrisFlow	Water	SurfaceWaterProtectionZone	1,783.9
DwellingsWithBasements	Agricultural	Agriculture_Parcel	43,982.9
DwellingsWithBasements	Agricultural	AgricultureWRLA_DryCrop	9,801.4
DwellingsWithBasements	Agricultural	AgricultureWRLA_Food	8,882.4
DwellingsWithBasements	Agricultural	AgricultureWRLU_Sprinkler	9,105.9
DwellingsWithBasements	Agricultural	AgricultureWRLU_SubIrrigated	6,982.0
DwellingsWithBasements	Agricultural	GrazingAllotment	2,161,080.3
DwellingsWithBasements	Natural	LakePond_Intermittent	14,210.9

## 5.7.4.5 UNICORPORATED TOOELE COUNTY I RISK ASSESMENT RESULTS I AREA DATA

UNICORP. TOOELE COUNTY - CRITICAL INFRASTRUCTURE AREA DATA - POTENTIAL LOSS TABLE			
Hazard	Category	Type	Acres
DwellingsWithBasements	Natural	LakePond_Perennial	169,706.7
DwellingsWithBasements	Natural	Reservoir_DisposalEarthen	51.6
DwellingsWithBasements	Natural	Reservoir_Earthen	1,071.0
DwellingsWithBasements	Natural	Reservoir_Evaporator	16,426.6
DwellingsWithBasements	Natural	Reservoir_Treatment	2.1
DwellingsWithBasements	Natural	Reservoir_ WaterStorageNonearthen	0.5
DwellingsWithBasements	Natural	Riparian	13,447.4
DwellingsWithBasements	Natural	Wetland	1,667,579.8
DwellingsWithBasements	Natural	Wetland_SwampMarsh	6,916.8
DwellingsWithBasements	Transportation	Airport_WRAP	230.5
DwellingsWithBasements	Water	GWPZone_1	23.1
DwellingsWithBasements	Water	GWPZone_2	9,672.0
DwellingsWithBasements	Water	GWPZone_3	26,055.5
DwellingsWithBasements	Water	GWPZone_4	166,040.9
DwellingsWithBasements	Water	RetailCulinaryWaterServiceArea	84,421.1
DwellingsWithBasements	Water	SurfaceWaterProtectionZone	1,783.9
DwellingsWithBasements	Water	TransientNCZone_2	43.9
DwellingsWithBasements	Water	TransientNCZone_4	9,806.5
DwellingsWithoutBasements	Agricultural	Agriculture_Parcel	43,982.9
DwellingsWithoutBasements	Agricultural	AgricultureWRLA_DryCrop	9,801.4
DwellingsWithoutBasements	Agricultural	AgricultureWRLA_Food	8,882.4
DwellingsWithoutBasements	Agricultural	AgricultureWRLU_Sprinkler	9,105.9
DwellingsWithoutBasements	Agricultural	AgricultureWRLU_SubIrrigated	6,982.0

UNICORP. TOOELE COUNTY - CRITICAL INFRASTRUCTURE AREA DATA - POTENTIAL LOSS TABLE			
Hazard	Category	Type	Acres
DwellingsWithoutBasements	Agricultural	GrazingAllotment	2,161,080.3
DwellingsWithoutBasements	Natural	LakePond_Intermittent	14,210.9
DwellingsWithoutBasements	Natural	LakePond_Perennial	169,706.7
DwellingsWithoutBasements	Natural	Reservoir_DisposalEarthen	51.6
DwellingsWithoutBasements	Natural	Reservoir_Earthen	1,071.0
DwellingsWithoutBasements	Natural	Reservoir_Evaporator	16,426.6
DwellingsWithoutBasements	Natural	Reservoir_Treatment	2.1
DwellingsWithoutBasements	Natural	Reservoir_ WaterStorageNonearthen	0.5
DwellingsWithoutBasements	Natural	Riparian	13,447.4
DwellingsWithoutBasements	Natural	Wetland	1,667,579.8
DwellingsWithoutBasements	Natural	Wetland_SwampMarsh	6,916.8
DwellingsWithoutBasements	Transportation	Airport_WRAP	230.5
DwellingsWithoutBasements	Water	GWPZone_1	23.1
DwellingsWithoutBasements	Water	GWPZone_2	9,672.0
DwellingsWithoutBasements	Water	GWPZone_3	26,055.5
DwellingsWithoutBasements	Water	GWPZone_4	166,040.9
DwellingsWithoutBasements	Water	RetailCulinaryWaterServiceArea	84,421.1
DwellingsWithoutBasements	Water	SurfaceWaterProtectionZone	1,783.9
DwellingsWithoutBasements	Water	TransientNCZone_2	43.9
DwellingsWithoutBasements	Water	TransientNCZone_4	9,806.5
Erosion_OffRoadTrail	Agricultural	Agriculture_Parcel	1,189.4
Erosion_OffRoadTrail	Agricultural	AgricultureWRLA_DryCrop	250.3
Erosion_OffRoadTrail	Agricultural	AgricultureWRLA_Food	148.5

## 5.7.4.5 UNICORPORATED TOOELE COUNTY I RISK ASSESMENT RESULTS I AREA DATA

UNICORP. TOOELE COUNTY - CRITICAL INFRASTRUCTURE AREA DATA - POTENTIAL LOSS TABLE			
Hazard	Category	Type	Acres
Erosion_OffRoadTrail	Agricultural	AgricultureWRLU_Sprinkler	25.5
Erosion_OffRoadTrail	Agricultural	AgricultureWRLU_SubIrrigated	58.3
Erosion_OffRoadTrail	Agricultural	GrazingAllotment	1,985,779.2
Erosion_OffRoadTrail	Natural	LakePond_Intermittent	5.5
Erosion_OffRoadTrail	Natural	LakePond_Perennial	46.4
Erosion_OffRoadTrail	Natural	Reservoir_DisposalEarthen	51.6
Erosion_OffRoadTrail	Natural	Riparian	641.5
Erosion_OffRoadTrail	Natural	Wetland	18,680.9
Erosion_OffRoadTrail	Water	GWPZone_1	10.8
Erosion_OffRoadTrail	Water	GWPZone_2	9,159.9
Erosion_OffRoadTrail	Water	GWPZone_3	22,217.5
Erosion_OffRoadTrail	Water	GWPZone_4	158,433.0
Erosion_OffRoadTrail	Water	RetailCulinaryWaterServiceArea	51,294.4
Erosion_OffRoadTrail	Water	SurfaceWaterProtectionZone	1,783.9
Erosion_OffRoadTrail	Water	TransientNCZone_2	22.0
Erosion_OffRoadTrail	Water	TransientNCZone_4	1,961.3
Erosion_RoadTrail	Agricultural	Agriculture_Parcel	20,600.5
Erosion_RoadTrail	Agricultural	AgricultureWRLA_DryCrop	6,396.1
Erosion_RoadTrail	Agricultural	AgricultureWRLA_Food	5,003.7
Erosion_RoadTrail	Agricultural	AgricultureWRLU_Sprinkler	2,563.3
Erosion_RoadTrail	Agricultural	AgricultureWRLU_SubIrrigated	583.0
Erosion_RoadTrail	Agricultural	GrazingAllotment	2,134,635.0
Erosion_RoadTrail	Natural	LakePond_Intermittent	52.1
Erosion_RoadTrail	Natural	LakePond_Perennial	34,981.7

UNICORP. TOOELE COUNTY - CRITICAL INFRASTRUCTURE AREA DATA - POTENTIAL LOSS TABLE			
Hazard	Category	Type	Acres
Erosion_RoadTrail	Natural	Reservoir_DisposalEarthen	51.6
Erosion_RoadTrail	Natural	Reservoir_Evaporator	6,349.5
Erosion_RoadTrail	Natural	Reservoir_Treatment	0.1
Erosion_RoadTrail	Natural	Reservoir_WaterStorageNonearthen	0.5
Erosion_RoadTrail	Natural	Riparian	7,410.7
Erosion_RoadTrail	Natural	Wetland	1,565,226.2
Erosion_RoadTrail	Natural	Wetland_SwampMarsh	68.8
Erosion_RoadTrail	Water	GWPZone_1	22.3
Erosion_RoadTrail	Water	GWPZone_2	9,527.9
Erosion_RoadTrail	Water	GWPZone_3	25,275.6
Erosion_RoadTrail	Water	GWPZone_4	163,765.1
Erosion_RoadTrail	Water	RetailCulinaryWaterServiceArea	81,678.2
Erosion_RoadTrail	Water	SurfaceWaterProtectionZone	1,783.9
Erosion_RoadTrail	Water	TransientNCZone_2	22.0
Erosion_RoadTrail	Water	TransientNCZone_4	9,806.5
FaultHazardZone	Agricultural	Agriculture_Parcel	4,417.2
FaultHazardZone	Agricultural	AgricultureWRLA_DryCrop	2,462.7
FaultHazardZone	Agricultural	AgricultureWRLA_Food	331.2
FaultHazardZone	Agricultural	AgricultureWRLU_Sprinkler	355.7
FaultHazardZone	Agricultural	AgricultureWRLU_SubIrrigated	111.8
FaultHazardZone	Agricultural	GrazingAllotment	1,322,113.5
FaultHazardZone	Natural	LakePond_Intermittent	8.3
FaultHazardZone	Natural	LakePond_Perennial	129,745.8

## 5.7.4.5 UNICORPORATED TOOELE COUNTY I RISK ASSESMENT RESULTS I AREA DATA

UNICORP. TOOELE COUNTY - CRITICAL INFRASTRUCTURE AREA DATA - POTENTIAL LOSS TABLE			
Hazard	Category	Type	Acres
FaultHazardZone	Natural	Riparian	508.0
FaultHazardZone	Natural	Wetland	99,161.9
FaultHazardZone	Water	GWPZone_1	10.1
FaultHazardZone	Water	GWPZone_2	2,378.4
FaultHazardZone	Water	GWPZone_3	12,516.7
FaultHazardZone	Water	GWPZone_4	69,679.0
FaultHazardZone	Water	RetailCulinaryWaterServiceArea	6,307.0
FaultHazardZone	Water	TransientNCZone_4	3,922.6
FEMA_FloodZone	Agricultural	Agriculture_Parcel	1,684.3
FEMA_FloodZone	Agricultural	AgricultureWRLA_DryCrop	181.4
FEMA_FloodZone	Agricultural	AgricultureWRLA_Food	301.9
FEMA_FloodZone	Agricultural	AgricultureWRLU_Sprinkler	569.3
FEMA_FloodZone	Agricultural	AgricultureWRLU_SubIrrigated	429.3
FEMA_FloodZone	Agricultural	GrazingAllotment	53,998.2
FEMA_FloodZone	Natural	LakePond_Perennial	129,730.5
FEMA_FloodZone	Natural	Riparian	0.9
FEMA_FloodZone	Natural	Wetland	10,758.5
FEMA_FloodZone	Water	GWPZone_1	0.7
FEMA_FloodZone	Water	GWPZone_2	433.8
FEMA_FloodZone	Water	GWPZone_3	1,713.7
FEMA_FloodZone	Water	GWPZone_4	15,919.2
FEMA_FloodZone	Water	RetailCulinaryWaterServiceArea	39,987.9
Flood_DamInundation	Agricultural	Agriculture_Parcel	11,588.8
Flood_DamInundation	Agricultural	AgricultureWRLA_DryCrop	817.5

UNICORP. TOOELE COUNTY - CRITICAL INFRASTRUCTURE AREA DATA - POTENTIAL LOSS TABLE			
Hazard	Category	Type	Acres
Flood_DamInundation	Agricultural	AgricultureWRLA_Food	1,384.5
Flood_DamInundation	Agricultural	AgricultureWRLU_Sprinkler	2,888.0
Flood_DamInundation	Agricultural	AgricultureWRLU_SubIrrigated	3,576.0
Flood_DamInundation	Agricultural	GrazingAllotment	42,797.2
Flood_DamInundation	Natural	LakePond_Intermittent	134.8
Flood_DamInundation	Natural	LakePond_Perennial	129,827.2
Flood_DamInundation	Natural	Reservoir_Evaporator	266.5
Flood_DamInundation	Natural	Riparian	2,048.0
Flood_DamInundation	Natural	Wetland	53,732.5
Flood_DamInundation	Natural	Wetland_SwampMarsh	132.5
Flood_DamInundation	Transportation	Airport_WRAP	230.5
Flood_DamInundation	Water	GWPZone_1	2.2
Flood_DamInundation	Water	GWPZone_2	31.7
Flood_DamInundation	Water	GWPZone_3	230.3
Flood_DamInundation	Water	GWPZone_4	1,261.5
Flood_DamInundation	Water	RetailCulinaryWaterServiceArea	61,781.9
Flood_GSL	Agricultural	Agriculture_Parcel	2,934.1
Flood_GSL	Agricultural	AgricultureWRLA_Food	73.1
Flood_GSL	Agricultural	AgricultureWRLU_SubIrrigated	630.9
Flood_GSL	Agricultural	GrazingAllotment	79,543.7
Flood_GSL	Natural	LakePond_Intermittent	119.8
Flood_GSL	Natural	LakePond_Perennial	167,423.5
Flood_GSL	Natural	Reservoir_Evaporator	1,312.0
Flood_GSL	Natural	Riparian	1,644.8

## 5.7.4.5 UNICORPORATED TOOELE COUNTY I RISK ASSESMENT RESULTS I AREA DATA

UNICORP. TOOELE COUNTY - CRITICAL INFRASTRUCTURE AREA DATA - POTENTIAL LOSS TABLE			
Hazard	Category	Type	Acres
Flood_GSL	Natural	Wetland	166,711.1
Flood_GSL	Natural	Wetland_SwampMarsh	344.7
Flood_GSL	Water	RetailCulinaryWaterServiceArea	4,682.1
Flood_SoilsPurdue	Agricultural	Agriculture_Parcel	16,017.9
Flood_SoilsPurdue	Agricultural	AgricultureWRLA_DryCrop	2,017.7
Flood_SoilsPurdue	Agricultural	AgricultureWRLA_Food	4,820.3
Flood_SoilsPurdue	Agricultural	AgricultureWRLU_Sprinkler	1,279.0
Flood_SoilsPurdue	Agricultural	AgricultureWRLU_SubIrrigated	1,792.4
Flood_SoilsPurdue	Agricultural	GrazingAllotment	1,101,540.0
Flood_SoilsPurdue	Natural	LakePond_Intermittent	1,158.8
Flood_SoilsPurdue	Natural	LakePond_Perennial	2,525.5
Flood_SoilsPurdue	Natural	Reservoir_Earthen	1,071.0
Flood_SoilsPurdue	Natural	Reservoir_Evaporator	1,828.2
Flood_SoilsPurdue	Natural	Riparian	10,186.2
Flood_SoilsPurdue	Natural	Wetland	1,505,424.9
Flood_SoilsPurdue	Natural	Wetland_SwampMarsh	6,094.0
Flood_SoilsPurdue	Water	GWPZone_1	5.8
Flood_SoilsPurdue	Water	GWPZone_2	540.4
Flood_SoilsPurdue	Water	GWPZone_3	6,377.7
Flood_SoilsPurdue	Water	GWPZone_4	105,278.3
Flood_SoilsPurdue	Water	RetailCulinaryWaterServiceArea	72,144.0
Flood_SoilsPurdue	Water	TransientNCZone_4	1,961.3
Flood_USUValleyBottom	Agricultural	Agriculture_Parcel	8,817.1

UNICORP. TOOELE COUNTY - CRITICAL INFRASTRUCTURE AREA DATA - POTENTIAL LOSS TABLE			
Hazard	Category	Type	Acres
Flood_USUValleyBottom	Agricultural	AgricultureWRLA_DryCrop	173.1
Flood_USUValleyBottom	Agricultural	AgricultureWRLA_Food	4,403.7
Flood_USUValleyBottom	Agricultural	AgricultureWRLU_Sprinkler	606.2
Flood_USUValleyBottom	Agricultural	AgricultureWRLU_SubIrrigated	2,221.5
Flood_USUValleyBottom	Agricultural	GrazingAllotment	616,255.9
Flood_USUValleyBottom	Natural	LakePond_Intermittent	3.4
Flood_USUValleyBottom	Natural	LakePond_Perennial	321.3
Flood_USUValleyBottom	Natural	Riparian	2,049.1
Flood_USUValleyBottom	Natural	Wetland	63,466.5
Flood_USUValleyBottom	Natural	Wetland_SwampMarsh	387.9
Flood_USUValleyBottom	Water	GWPZone_1	5.8
Flood_USUValleyBottom	Water	GWPZone_2	5,404.2
Flood_USUValleyBottom	Water	GWPZone_3	8,361.7
Flood_USUValleyBottom	Water	GWPZone_4	96,308.1
Flood_USUValleyBottom	Water	RetailCulinaryWaterServiceArea	27,229.5
Flood_USUValleyBottom	Water	SurfaceWaterProtectionZone	1,514.9
Flood_USUValleyBottom	Water	TransientNCZone_2	22.0
Flood_USUValleyBottom	Water	TransientNCZone_4	1,961.3
Flood_Wetland_Riparian	Agricultural	Agriculture_Parcel	41,941.0
Flood_Wetland_Riparian	Agricultural	AgricultureWRLA_DryCrop	10,028.3
Flood_Wetland_Riparian	Agricultural	AgricultureWRLA_Food	8,035.6
Flood_Wetland_Riparian	Agricultural	AgricultureWRLU_Sprinkler	7,751.1
Flood_Wetland_Riparian	Agricultural	AgricultureWRLU_SubIrrigated	6,864.3
Flood_Wetland_Riparian	Agricultural	GrazingAllotment	2,153,945.0



## 5.7.4.5 UNICORPORATED TOOELE COUNTY I RISK ASSESMENT RESULTS I AREA DATA

UNICORP. TOOELE COUNTY - CRITICAL INFRASTRUCTURE AREA DATA - POTENTIAL LOSS TABLE			
Hazard	Category	Type	Acres
Flood_Wetland_Riparian	Natural	LakePond_Intermittent	14,258.4
Flood_Wetland_Riparian	Natural	LakePond_Perennial	169,770.7
Flood_Wetland_Riparian	Natural	Reservoir_DisposalEarthen	51.6
Flood_Wetland_Riparian	Natural	Reservoir_Earthen	1,071.0
Flood_Wetland_Riparian	Natural	Reservoir_Evaporator	54,254.4
Flood_Wetland_Riparian	Natural	Reservoir_Treatment	3.0
Flood_Wetland_Riparian	Natural	Reservoir_WaterStorageNonearthen	0.5
Flood_Wetland_Riparian	Natural	Riparian	13,538.8
Flood_Wetland_Riparian	Natural	Wetland	1,711,384.3
Flood_Wetland_Riparian	Natural	Wetland_SwampMarsh	6,916.8
Flood_Wetland_Riparian	Transportation	Airport_WRAP	230.5
Flood_Wetland_Riparian	Water	GWPZone_1	13.0
Flood_Wetland_Riparian	Water	GWPZone_2	10,023.1
Flood_Wetland_Riparian	Water	GWPZone_3	26,072.3
Flood_Wetland_Riparian	Water	GWPZone_4	166,999.2
Flood_Wetland_Riparian	Water	RetailCulinaryWaterServiceArea	78,757.1
Flood_Wetland_Riparian	Water	SurfaceWaterProtectionZone	1,783.9
Flood_Wetland_Riparian	Water	TransientNCZone_2	87.8
Flood_Wetland_Riparian	Water	TransientNCZone_4	15,690.4
Landslide	Agricultural	Agriculture_Parcel	90.8
Landslide	Agricultural	AgricultureWRLA_DryCrop	103.1
Landslide	Agricultural	GrazingAllotment	723,679.2
Landslide	Natural	LakePond_Perennial	129,730.3

UNICORP. TOOELE COUNTY - CRITICAL INFRASTRUCTURE AREA DATA - POTENTIAL LOSS TABLE			
Hazard	Category	Type	Acres
Landslide	Natural	Reservoir_DisposalEarthen	51.6
Landslide	Natural	Wetland	1,523.9
Landslide	Water	GWPZone_1	1.4
Landslide	Water	GWPZone_2	1,826.5
Landslide	Water	GWPZone_3	4,246.0
Landslide	Water	GWPZone_4	111,534.1
Landslide	Water	SurfaceWaterProtectionZone	1,783.9
Liquefaction	Agricultural	Agriculture_Parcel	18,559.1
Liquefaction	Agricultural	AgricultureWRLA_DryCrop	2,253.6
Liquefaction	Agricultural	AgricultureWRLA_Food	2,729.2
Liquefaction	Agricultural	AgricultureWRLU_Sprinkler	4,259.9
Liquefaction	Agricultural	AgricultureWRLU_SubIrrigated	4,678.5
Liquefaction	Agricultural	GrazingAllotment	77,614.0
Liquefaction	Natural	LakePond_Intermittent	1,236.2
Liquefaction	Natural	LakePond_Perennial	130,822.2
Liquefaction	Natural	Reservoir_Earthen	1,071.0
Liquefaction	Natural	Reservoir_Evaporator	3,631.4
Liquefaction	Natural	Riparian	4,656.0
Liquefaction	Natural	Wetland	86,390.5
Liquefaction	Natural	Wetland_SwampMarsh	592.0
Liquefaction	Transportation	Airport_WRAP	230.5
Liquefaction	Water	GWPZone_1	1.4
Liquefaction	Water	GWPZone_2	107.4

## 5.7.4.5 UNICORPORATED TOOELE COUNTY I RISK ASSESMENT RESULTS I AREA DATA

UNICORP. TOOELE COUNTY - CRITICAL INFRASTRUCTURE AREA DATA - POTENTIAL LOSS TABLE			
Hazard	Category	Type	Acres
Liquefaction	Water	GWPZone_3	1,987.9
Liquefaction	Water	GWPZone_4	15,434.6
Liquefaction	Water	RetailCulinaryWaterServiceArea	28,196.0
RMRS_WildFireHP_2020	Agricultural	Agriculture_Parcel	46,158.8
RMRS_WildFireHP_2020	Agricultural	AgricultureWRLA_DryCrop	13,950.8
RMRS_WildFireHP_2020	Agricultural	AgricultureWRLA_Food	8,915.6
RMRS_WildFireHP_2020	Agricultural	AgricultureWRLU_Sprinkler	9,010.9
RMRS_WildFireHP_2020	Agricultural	AgricultureWRLU_SubIrrigated	7,015.6
RMRS_WildFireHP_2020	Agricultural	GrazingAllotment	2,130,214.3
RMRS_WildFireHP_2020	Natural	LakePond_Intermittent	1,344.0
RMRS_WildFireHP_2020	Natural	LakePond_Perennial	166,980.5
RMRS_WildFireHP_2020	Natural	Reservoir_Evaporator	109.8
RMRS_WildFireHP_2020	Natural	Reservoir_Treatment	1.7
RMRS_WildFireHP_2020	Natural	Reservoir_ WaterStorageNonearthen	2.1
RMRS_WildFireHP_2020	Natural	Riparian	11,970.0
RMRS_WildFireHP_2020	Natural	Wetland	1,236,148.3
RMRS_WildFireHP_2020	Natural	Wetland_SwampMarsh	6,388.3
RMRS_WildFireHP_2020	Transportation	Airport_WRAP	230.5
RMRS_WildFireHP_2020	Water	GWPZone_1	32.4
RMRS_WildFireHP_2020	Water	GWPZone_2	10,224.2
RMRS_WildFireHP_2020	Water	GWPZone_3	26,675.5
RMRS_WildFireHP_2020	Water	GWPZone_4	168,770.9
RMRS_WildFireHP_2020	Water	RetailCulinaryWaterServiceArea	78,533.6

UNICORP. TOOELE COUNTY - CRITICAL INFRASTRUCTURE AREA DATA - POTENTIAL LOSS TABLE			
Hazard	Category	Type	Acres
RMRS_WildFireHP_2020	Water	SurfaceWaterProtectionZone	1,783.9
RMRS_WildFireHP_2020	Water	TransientNCZone_2	153.7
RMRS_WildFireHP_2020	Water	TransientNCZone_4	15,690.4
SGID_EngineeringPS	Agricultural	Agriculture_Parcel	2,203.3
SGID_EngineeringPS	Agricultural	AgricultureWRLA_DryCrop	690.4
SGID_EngineeringPS	Agricultural	AgricultureWRLU_Sprinkler	306.9
SGID_EngineeringPS	Agricultural	GrazingAllotment	1,490,975.9
SGID_EngineeringPS	Natural	LakePond_Intermittent	6.0
SGID_EngineeringPS	Natural	LakePond_Perennial	0.2
SGID_EngineeringPS	Natural	Reservoir_DisposalEarthen	51.6
SGID_EngineeringPS	Natural	Reservoir_Evaporator	5,315.5
SGID_EngineeringPS	Natural	Riparian	416.6
SGID_EngineeringPS	Natural	Wetland	1,440,882.1
SGID_EngineeringPS	Water	GWPZone_1	2.2
SGID_EngineeringPS	Water	GWPZone_2	1,039.4
SGID_EngineeringPS	Water	GWPZone_3	2,630.4
SGID_EngineeringPS	Water	GWPZone_4	10,649.5
SGID_EngineeringPS	Water	RetailCulinaryWaterServiceArea	43,232.6
SGID_EngineeringPS	Water	SurfaceWaterProtectionZone	1,783.9
SteepSlope	Agricultural	Agriculture_Parcel	3,052.5
SteepSlope	Agricultural	AgricultureWRLA_DryCrop	527.3
SteepSlope	Agricultural	AgricultureWRLA_Food	78.3
SteepSlope	Agricultural	AgricultureWRLU_Sprinkler	113.2

## 5.7.4.5 UNINCORPORATED TOOELE COUNTY I RISK ASSESMENT RESULTS I AREA DATA

UNICORP. TOOELE COUNTY - CRITICAL INFRASTRUCTURE AREA DATA - POTENTIAL LOSS TABLE			
Hazard	Category	Type	Acres
SteepSlope	Agricultural	AgricultureWRLU_SubIrrigated	143.1
SteepSlope	Agricultural	GrazingAllotment	2,082,410.0
SteepSlope	Natural	LakePond_Intermittent	1.1
SteepSlope	Natural	LakePond_Perennial	34,912.2
SteepSlope	Natural	Riparian	430.2
SteepSlope	Natural	Wetland	1,414,047.9
SteepSlope	Water	GWPZone_1	13.0
SteepSlope	Water	GWPZone_2	9,153.6
SteepSlope	Water	GWPZone_3	22,450.2
SteepSlope	Water	GWPZone_4	159,290.3
SteepSlope	Water	RetailCulinaryWaterServiceArea	69,578.7
SteepSlope	Water	SurfaceWaterProtectionZone	1,783.9
SteepSlope	Water	TransientNCZone_4	5,883.9
WildlifeAuto	Agricultural	GrazingAllotment	19,559.7
WildlifeAuto	Natural	Wetland	124.9
WildlifeAuto	Water	GWPZone_4	28,015.6
WildlifeAuto	Water	RetailCulinaryWaterServiceArea	13,925.3

## 5.7.5 UNICORPORATED TOOELE COUNTY - MITIGATION STRATEGIES

### TOOELE COUNTY MITIGATION STRATEGIES - 2021 TOOELE COUNTY PDMP

Hazard	Strategy	Strategy Informational Categories	Details
AVALANCHE - CURRENT RESIDENTS/PROPERTY	Conduct training with backcountry winter outdoor users	NFIP compliant?	N/A
AVALANCHE - CURRENT RESIDENTS/PROPERTY	Develop an avalanche warning system	NFIP compliant?	N/A
AVALANCHE - CURRENT RESIDENTS/PROPERTY	Increase knowledge for city and county emergency managers	Estimated Cost	\$0 - \$25 K
		NFIP compliant?	Helps reduce risk
		Pot. Funding Sources	County
		Priority	Low
		Responsible Entity	County
		Timeframe	2025
AVALANCHE - CURRENT RESIDENTS/PROPERTY	Install fencing to support structures arranged to retain snow	NFIP compliant?	N/A
AVALANCHE - CURRENT RESIDENTS/PROPERTY	Plant trees and other vegetation to reduce impact of avalanches	NFIP compliant?	N/A
AVALANCHE - CURRENT RESIDENTS/PROPERTY	Purchase avalanche risk area lands or require buffers when developing infrastructure such as roads or buildings	NFIP compliant?	N/A
AVALANCHE - CURRENT RESIDENTS/PROPERTY	Retrofit critical facilities and infrastructure to withstand avalanches such as reinforced concrete walls	NFIP compliant?	N/A
AVALANCHE - FUTURE RESIDENTS/PROPERTY	Conduct training with backcountry winter outdoor users	NFIP compliant?	N/A
AVALANCHE - FUTURE RESIDENTS/PROPERTY	Develop an avalanche codes or regulations prohibiting or limiting structures in known avalanche zones	NFIP compliant?	N/A
AVALANCHE - FUTURE RESIDENTS/PROPERTY	Develop an avalanche warning system	NFIP compliant?	N/A
AVALANCHE - FUTURE RESIDENTS/PROPERTY	Increase knowledge for city and county emergency managers	Estimated Cost	\$0 - \$25 K
		NFIP compliant?	Helps reduce risk
		Pot. Funding Sources	County
		Priority	Medium
		Responsible Entity	County
		Timeframe	2023
AVALANCHE - FUTURE RESIDENTS/PROPERTY	Install fencing to support structures arranged to retain snow	NFIP compliant?	N/A
AVALANCHE - FUTURE RESIDENTS/PROPERTY	Plant trees and other vegetation to reduce impact of avalanches	NFIP compliant?	N/A
AVALANCHE - FUTURE RESIDENTS/PROPERTY	Purchase avalanche risk area lands or require buffers when developing infrastructure such as roads or buildings	NFIP compliant?	N/A
AVALANCHE - FUTURE RESIDENTS/PROPERTY	Retrofit critical facilities and infrastructure to withstand avalanches such as reinforced concrete walls	NFIP compliant?	N/A
DAM FAILURE - CURRENT RESIDENTS/PROPERTY	Develop ordinances to prohibit or limit critical facilities and/or structures in dam inundation areas	NFIP compliant?	N/A
DAM FAILURE - CURRENT RESIDENTS/PROPERTY	Ensure new critical facilities and infrastructure are not built in dam inundation areas	NFIP compliant?	N/A
DAM FAILURE - CURRENT RESIDENTS/PROPERTY	Identify areas of encroachment below high hazard dams especially in dam inundation areas	NFIP compliant?	N/A
DAM FAILURE - CURRENT RESIDENTS/PROPERTY	Promote National Dam Safety Awareness Day	Estimated Cost	\$0 - \$25 K
		NFIP compliant?	Helps reduce risk
		Pot. Funding Sources	County

## TOOELE COUNTY MITIGATION STRATEGIES - 2021 TOOELE COUNTY PDMP

Hazard	Strategy	Strategy Informational Categories	Details
DAM FAILURE - CURRENT RESIDENTS/PROPERTY	Promote National Dam Safety Awareness Day	Priority	Medium
		Responsible Entity	County
		Timeframe	2022
DAM FAILURE - CURRENT RESIDENTS/PROPERTY	Relocate government-owned facilities located near high risk dam failures	NFIP compliant?	N/A
DAM FAILURE - CURRENT RESIDENTS/PROPERTY	Work with the Utah Division of Water Rights and dam companies to bring deficient high hazard dams up to current industry standards	Estimated Cost	\$0 - \$25 K
		NFIP compliant?	Helps reduce risk
		Pot. Funding Sources	State UGS
		Priority	High
		Responsible Entity	County
		Timeframe	2022
DAM FAILURE - CURRENT RESIDENTS/PROPERTY	Work with the Utah Division of Water Rights and dam companies to install a dam monitoring system	Estimated Cost	\$0 - \$25 K
		NFIP compliant?	Helps reduce risk
		Pot. Funding Sources	County
		Priority	Medium
		Responsible Entity	County
		Timeframe	2023
DAM FAILURE - CURRENT RESIDENTS/PROPERTY	Work with the Utah Division of Water Rights and dam companies to update dam emergency action plans	Estimated Cost	\$0 - \$25 K
		NFIP compliant?	Helps reduce risk
		Pot. Funding Sources	County
		Priority	High
		Responsible Entity	County
		Timeframe	2022
DAM FAILURE - FUTURE RESIDENTS/PROPERTY	Develop ordinances to prohibit or limit critical facilities and/or structures in dam inundation areas	NFIP compliant?	N/A
DAM FAILURE - FUTURE RESIDENTS/PROPERTY	Ensure new critical facilities and infrastructure are not built in dam inundation areas	Estimated Cost	\$0 - \$25 K
		NFIP compliant?	Helps reduce risk
		Pot. Funding Sources	State UGS
		Priority	High
		Responsible Entity	County
		Timeframe	2023
DAM FAILURE - FUTURE RESIDENTS/PROPERTY	Identify areas of encroachment below high hazard dams especially in dam inundation areas	NFIP compliant?	N/A
		Estimated Cost	\$0 - \$25 K

## TOOELE COUNTY MITIGATION STRATEGIES - 2021 TOOELE COUNTY PDMP

Hazard	Strategy	Strategy Informational Categories	Details
DAM FAILURE - FUTURE RESIDENTS/PROPERTY	Promote National Dam Safety Awareness Day	NFIP compliant?	Helps reduce risk
		Pot. Funding Sources	County
		Priority	High
		Responsible Entity	County
		Timeframe	2022
DAM FAILURE - FUTURE RESIDENTS/PROPERTY	Relocate government-owned facilities located near high risk dam failures	NFIP compliant?	N/A
DAM FAILURE - FUTURE RESIDENTS/PROPERTY	Work with the Utah Division of Water Rights and dam companies to bring deficient high hazard dams up to current industry standards	Estimated Cost	\$0 - \$25 K
		NFIP compliant?	Helps reduce risk
		Pot. Funding Sources	State UGS
		Priority	High
		Responsible Entity	County
DAM FAILURE - FUTURE RESIDENTS/PROPERTY	Work with the Utah Division of Water Rights and dam companies to install a dam monitoring system	Estimated Cost	\$0 - \$25 K
		NFIP compliant?	Helps reduce risk
		Pot. Funding Sources	State UGS
		Priority	High
		Responsible Entity	County
DAM FAILURE - FUTURE RESIDENTS/PROPERTY	Work with the Utah Division of Water Rights and dam companies to update dam emergency action plans	Estimated Cost	\$0 - \$25 K
		NFIP compliant?	Helps reduce risk
		Pot. Funding Sources	County
		Priority	High
		Responsible Entity	County
DROUGHT - CURRENT RESIDENTS/PROPERTY	Designate and or preserve adequate source water protection zones or groundwater recharge areas	Estimated Cost	\$0 - \$25 K
		NFIP compliant?	Helps reduce risk
		Pot. Funding Sources	County
		Priority	Medium
		Responsible Entity	County
		Timeframe	2022
		Estimated Cost	\$0 - \$25 K



## TOOELE COUNTY MITIGATION STRATEGIES - 2021 TOOELE COUNTY PDMP

Hazard	Strategy	Strategy Informational Categories	Details
DROUGHT - CURRENT RESIDENTS/PROPERTY	Educate Decision Makers and Government Employees on Water Saving Techniques (list event details in "comments")	NFIP compliant?	Helps reduce risk
		Pot. Funding Sources	County
		Priority	High
		Responsible Entity	County
		Timeframe	2022
DROUGHT - CURRENT RESIDENTS/PROPERTY	Educate Residents on Water Saving Techniques (list event details in "comments")	Estimated Cost	\$0 - \$25 K
		NFIP compliant?	Helps reduce risk
		Pot. Funding Sources	County
		Priority	High
		Responsible Entity	County
DROUGHT - CURRENT RESIDENTS/PROPERTY	Educate the Agriculture Sector on Soil and Water Saving Practices (list event details in "comments")	Timeframe	2022
		NFIP compliant?	N/A
DROUGHT - CURRENT RESIDENTS/PROPERTY	Enforce codes ordinances statues and laws that promote drought resiliency and water conservation practices	Estimated Cost	\$0 - \$25 K
		NFIP compliant?	Helps reduce risk
		Pot. Funding Sources	County
		Priority	Low
		Responsible Entity	County
DROUGHT - CURRENT RESIDENTS/PROPERTY	Expand and Improve Existing Potable Water Systems	Timeframe	2022
		NFIP compliant?	N/A
DROUGHT - CURRENT RESIDENTS/PROPERTY	Improve Public Water Infrastructure and Management with Water Provider	Estimated Cost	\$0 - \$25 K
		NFIP compliant?	Helps reduce risk
		Pot. Funding Sources	County
		Priority	High
		Responsible Entity	County
DROUGHT - CURRENT RESIDENTS/PROPERTY	Monitor Water Supply for leaks system failures inefficiencies etc. via monitoring system and audits	Timeframe	2023
		NFIP compliant?	N/A
DROUGHT - CURRENT RESIDENTS/PROPERTY	Plan and Prepare for Drought via emergency planning and warning systems	Estimated Cost	\$0 - \$25 K
		NFIP compliant?	Helps reduce risk
		Pot. Funding Sources	County
		Priority	High
		Responsible Entity	County

## TOOELE COUNTY MITIGATION STRATEGIES - 2021 TOOELE COUNTY PDMP

Hazard	Strategy	Strategy Informational Categories	Details
		Timeframe	2022
DROUGHT - CURRENT RESIDENTS/PROPERTY	Retrofit Water Supply Systems to handle current and new growth	NFIP compliant?	N/A
DROUGHT - CURRENT RESIDENTS/PROPERTY	Update and adopt drought ordinances	Estimated Cost	\$25 K - \$50 K
		NFIP compliant?	Helps reduce risk
		Pot. Funding Sources	County
		Priority	High
		Responsible Entity	County
		Timeframe	2022
DROUGHT - FUTURE RESIDENTS/PROPERTY	Designate and or preserve adequate source water protection zones or groundwater recharge areas	Estimated Cost	\$0 - \$25 K
		NFIP compliant?	Helps reduce risk
		Pot. Funding Sources	County
		Priority	Medium
		Responsible Entity	County
		Timeframe	2023
DROUGHT - FUTURE RESIDENTS/PROPERTY	Educate Decision Makers and Government Employees on Water Saving Techniques (list event details in "comments")	Estimated Cost	\$0 - \$25 K
		NFIP compliant?	Helps reduce risk
		Pot. Funding Sources	County
		Priority	High
		Responsible Entity	County
		Timeframe	2022
DROUGHT - FUTURE RESIDENTS/PROPERTY	Educate Residents on Water Saving Techniques (list event details in "comments")	Estimated Cost	\$0 - \$25 K
		NFIP compliant?	Helps reduce risk
		Pot. Funding Sources	County
		Priority	High
		Responsible Entity	County
		Timeframe	2022
DROUGHT - FUTURE RESIDENTS/PROPERTY	Educate the Agriculture Sector on Soil and Water Saving Practices (list event details in "comments")	NFIP compliant?	N/A
DROUGHT - FUTURE RESIDENTS/PROPERTY	Enforce codes ordinances statues and laws that promote drought resiliency and water conservation practices	Estimated Cost	\$25 K - \$50 K
		NFIP compliant?	Helps reduce risk
		Pot. Funding Sources	County
		Priority	High

## TOOELE COUNTY MITIGATION STRATEGIES - 2021 TOOELE COUNTY PDMP

Hazard	Strategy	Strategy Informational Categories	Details
		Responsible Entity	County
		Timeframe	2022
DROUGHT - FUTURE RESIDENTS/PROPERTY	Expand and Improve Existing Potable Water Systems	NFIP compliant?	N/A
DROUGHT - FUTURE RESIDENTS/PROPERTY	Improve Public Water Infrastructure and Management with Water Provider	NFIP compliant?	N/A
DROUGHT - FUTURE RESIDENTS/PROPERTY	Monitor Water Supply for leaks system failures inefficiencies etc. via monitoring system and audits	NFIP compliant?	N/A
DROUGHT - FUTURE RESIDENTS/PROPERTY	Plan and Prepare for Drought via emergency planning and warning systems	Estimated Cost	\$0 - \$25 K
		NFIP compliant?	Helps reduce risk
		Pot. Funding Sources	County
		Priority	High
		Responsible Entity	County
		Timeframe	2023
DROUGHT - FUTURE RESIDENTS/PROPERTY	Retrofit Water Supply Systems to handle current and new growth	NFIP compliant?	N/A
DROUGHT - FUTURE RESIDENTS/PROPERTY	Update and adopt drought ordinances	Estimated Cost	\$25 K - \$50 K
		NFIP compliant?	Helps reduce risk
		Pot. Funding Sources	County
		Priority	High
		Responsible Entity	County
		Timeframe	2022
EARTHQUAKE - CURRENT RESIDENTS/PROPERTY	Building Code Adoption and Enforcement	Estimated Cost	\$25 K - \$50 K
		NFIP compliant?	Helps reduce risk
		Pot. Funding Sources	County
		Priority	High
		Responsible Entity	County
		Timeframe	2022
EARTHQUAKE - CURRENT RESIDENTS/PROPERTY	Conduct Building Safety Inspections	Estimated Cost	\$25 K - \$50 K
		NFIP compliant?	Helps reduce risk
		Pot. Funding Sources	County
		Priority	High
		Responsible Entity	County
		Timeframe	2022
		Estimated Cost	\$0 - \$25 K

## TOOELE COUNTY MITIGATION STRATEGIES - 2021 TOOELE COUNTY PDMP

Hazard	Strategy	Strategy Informational Categories	Details
EARTHQUAKE - CURRENT RESIDENTS/PROPERTY	Conduct Outreach to Builders Architects Engineers and Inspectors	NFIP compliant?	Helps reduce risk
		Pot. Funding Sources	County
		Priority	Low
		Responsible Entity	County
		Timeframe	2022
EARTHQUAKE - CURRENT RESIDENTS/PROPERTY	Develop and/or review or adopt model earthquake hazard ordinance	NFIP compliant?	N/A
EARTHQUAKE - CURRENT RESIDENTS/PROPERTY	Establish a "green infrastructure" program to link manage and expand existing parks preserves greenways etc	NFIP compliant?	N/A
EARTHQUAKE - CURRENT RESIDENTS/PROPERTY	Increase Awareness and Education of Earthquakes through an educational event	Estimated Cost	\$25 K - \$50 K
		NFIP compliant?	Helps reduce risk
		Pot. Funding Sources	County
		Priority	High
		Responsible Entity	County
		Timeframe	2022
EARTHQUAKE - CURRENT RESIDENTS/PROPERTY	Local Planning such as critical facilities planning financial incentives creating a safety committee emergency planning etc	NFIP compliant?	N/A
EARTHQUAKE - CURRENT RESIDENTS/PROPERTY	Retrofit Critical Facilities and Infrastructure to Withstand Earthquakes (list specifics in "comments" section)	Estimated Cost	\$1 Mil +
		NFIP compliant?	Helps reduce risk
		Pot. Funding Sources	County
		Priority	Low
		Responsible Entity	County
		Timeframe	2025
EARTHQUAKE - FUTURE RESIDENTS/PROPERTY	Building Code Adoption and Enforcement	Estimated Cost	\$25 K - \$50 K
		NFIP compliant?	Helps reduce risk
		Pot. Funding Sources	County
		Priority	High
		Responsible Entity	County
		Timeframe	2022
EARTHQUAKE - FUTURE RESIDENTS/PROPERTY	Conduct Building Safety Inspections	Estimated Cost	\$25 K - \$50 K
		NFIP compliant?	Helps reduce risk
		Pot. Funding Sources	County
		Priority	High
		Responsible Entity	County

## TOOELE COUNTY MITIGATION STRATEGIES - 2021 TOOELE COUNTY PDMP

Hazard	Strategy	Strategy Informational Categories	Details
		Timeframe	2022
EARTHQUAKE - FUTURE RESIDENTS/PROPERTY	Conduct Outreach to Builders Architects Engineers and Inspectors	NFIP compliant?	N/A
EARTHQUAKE - FUTURE RESIDENTS/PROPERTY	Develop and/or review or adopt model earthquake hazard ordinance	NFIP compliant?	N/A
EARTHQUAKE - FUTURE RESIDENTS/PROPERTY	Establish a "green infrastructure" program to link manage and expand existing parks preserves greenways etc	NFIP compliant?	N/A
EARTHQUAKE - FUTURE RESIDENTS/PROPERTY	Increase Awareness and Education of Earthquakes through an educational event	Estimated Cost	\$0 - \$25 K
		NFIP compliant?	Helps reduce risk
		Pot. Funding Sources	County
		Priority	High
		Responsible Entity	County
		Timeframe	2022
EARTHQUAKE - FUTURE RESIDENTS/PROPERTY	Local Planning such as critical facilities planning financial incentives creating a safety committee emergency planning etc	NFIP compliant?	N/A
EARTHQUAKE - FUTURE RESIDENTS/PROPERTY	Retrofit Critical Facilities and Infrastructure to Withstand Earthquakes (list specifics in "comments" section)	Estimated Cost	\$1 Mil +
		NFIP compliant?	Helps reduce risk
		Pot. Funding Sources	County
		Priority	Low
		Responsible Entity	County
		Timeframe	2025
FLOOD - CURRENT RESIDENTS/PROPERTY	Adopt and Enforce Building Codes and Development Standards	Estimated Cost	\$0 - \$25 K
		NFIP compliant?	Helps reduce risk
		Pot. Funding Sources	County
		Priority	High
		Responsible Entity	County
		Timeframe	2022
FLOOD - CURRENT RESIDENTS/PROPERTY	Conduct Regular Maintenance for Drainage Systems and Flood Control Structures	Estimated Cost	\$50 K - \$100 K
		NFIP compliant?	Helps reduce risk
		Pot. Funding Sources	County
		Priority	High
		Responsible Entity	County
		Timeframe	2022
		Estimated Cost	\$0 - \$25 K
		NFIP compliant?	Helps reduce risk

## TOOELE COUNTY MITIGATION STRATEGIES - 2021 TOOELE COUNTY PDMP

Hazard	Strategy	Strategy Informational Categories	Details
FLOOD - CURRENT RESIDENTS/PROPERTY	Coordination and Partnerships i.e. develop stormwater committee regional watershed council local councils etc	Pot. Funding Sources	County
		Priority	High
		Responsible Entity	County
		Timeframe	2022
FLOOD - CURRENT RESIDENTS/PROPERTY	Elevate or Retrofit Facilities and Infrastructure	NFIP compliant?	N/A
FLOOD - CURRENT RESIDENTS/PROPERTY	Floodproof At-Risk Residential and Non-Residential Structures	Estimated Cost	\$50 K - \$100 K
		NFIP compliant?	Helps reduce risk
		Pot. Funding Sources	County
		Priority	High
		Responsible Entity	County
		Timeframe	2023
FLOOD - CURRENT RESIDENTS/PROPERTY	Improve Stormwater Drainage Capacity	NFIP compliant?	N/A
FLOOD - CURRENT RESIDENTS/PROPERTY	Information and educational events (list details in "comments" section)	Estimated Cost	\$0 - \$25 K
		NFIP compliant?	Helps reduce risk
		Pot. Funding Sources	County
		Priority	High
		Responsible Entity	County
		Timeframe	2022
FLOOD - CURRENT RESIDENTS/PROPERTY	Other local planning mechanisms such as joining the NFIP creating risk plans establishing green infrastructure plan etc	Estimated Cost	\$0 - \$25 K
		NFIP compliant?	Helps reduce risk
		Pot. Funding Sources	County
		Priority	Medium
		Responsible Entity	County
		Timeframe	2023
FLOOD - CURRENT RESIDENTS/PROPERTY	Preserve Floodplains and Open Space through ordinances land purchase conservation easements etc	Estimated Cost	\$0 - \$25 K
		NFIP compliant?	Helps reduce risk
		Pot. Funding Sources	County
		Priority	Low
		Responsible Entity	County
		Timeframe	2022
		Estimated Cost	\$250 K - \$500 K



## TOOELE COUNTY MITIGATION STRATEGIES - 2021 TOOELE COUNTY PDMP

Hazard	Strategy	Strategy Informational Categories	Details
FLOOD - CURRENT RESIDENTS/PROPERTY	Protect and Restore Natural Flood Mitigation Features through natural greenway protection and restoration	NFIP compliant?	Helps reduce risk
		Pot. Funding Sources	County
		Priority	High
		Responsible Entity	County
		Timeframe	2022
FLOOD - CURRENT RESIDENTS/PROPERTY	Protect Infrastructure such as roads bridges wastewater treatment etc	Estimated Cost	\$250 K - \$500 K
		NFIP compliant?	Helps reduce risk
		Pot. Funding Sources	County
		Priority	High
		Responsible Entity	County
		Timeframe	2022
FLOOD - CURRENT RESIDENTS/PROPERTY	Remove Existing Structures from Flood Hazard Area	NFIP compliant?	N/A
FLOOD - CURRENT RESIDENTS/PROPERTY	Review and/or Develop Codes Ordinances and Policies	Estimated Cost	\$25 K - \$50 K
		NFIP compliant?	Helps reduce risk
		Pot. Funding Sources	County
		Priority	High
		Responsible Entity	County
		Timeframe	2022
FLOOD - CURRENT RESIDENTS/PROPERTY	Stormwater Management Planning	Estimated Cost	\$0 - \$25 K
		NFIP compliant?	Helps reduce risk
		Pot. Funding Sources	County
		Priority	Medium
		Responsible Entity	County
		Timeframe	2023
FLOOD - FUTURE RESIDENTS/PROPERTY	Adopt and Enforce Building Codes and Development Standards	Estimated Cost	\$25 K - \$50 K
		NFIP compliant?	Helps reduce risk
		Pot. Funding Sources	County
		Priority	High
		Responsible Entity	County
		Timeframe	2022
		Estimated Cost	\$50 K - \$100 K

## TOOELE COUNTY MITIGATION STRATEGIES - 2021 TOOELE COUNTY PDMP

Hazard	Strategy	Strategy Informational Categories	Details
FLOOD - FUTURE RESIDENTS/PROPERTY	Conduct Regular Maintenance for Drainage Systems and Flood Control Structures	NFIP compliant?	Helps reduce risk
		Pot. Funding Sources	County
		Priority	High
		Responsible Entity	County
		Timeframe	2022
FLOOD - FUTURE RESIDENTS/PROPERTY	Coordination and Partnerships i.e. develop stormwater committee regional watershed council local councils etc	Estimated Cost	\$25 K - \$50 K
		NFIP compliant?	Helps reduce risk
		Pot. Funding Sources	County
		Priority	Medium
		Responsible Entity	County
FLOOD - FUTURE RESIDENTS/PROPERTY	Elevate or Retrofit Facilities and Infrastructure	Timeframe	2022
		NFIP compliant?	N/A
FLOOD - FUTURE RESIDENTS/PROPERTY	Floodproof At-Risk Residential and Non-Residential Structures	Estimated Cost	\$100 K - \$250 K
		NFIP compliant?	Helps reduce risk
		Pot. Funding Sources	County
		Priority	High
		Responsible Entity	County
FLOOD - FUTURE RESIDENTS/PROPERTY	Improve Stormwater Drainage Capacity	Timeframe	2022
		NFIP compliant?	N/A
FLOOD - FUTURE RESIDENTS/PROPERTY	Information and educational events (list details in "comments" section)	Estimated Cost	\$0 - \$25 K
		NFIP compliant?	Helps reduce risk
		Pot. Funding Sources	County
FLOOD - FUTURE RESIDENTS/PROPERTY	Other local planning mechanisms such as joining the NFIP creating risk plans establishing green infrastructure plan etc	Priority	High
		Responsible Entity	County
		Timeframe	2022
		Estimated Cost	\$0 - \$25 K
		NFIP compliant?	Helps reduce risk
FLOOD - FUTURE RESIDENTS/PROPERTY		Pot. Funding Sources	County
		Priority	Medium
		Responsible Entity	County
		Timeframe	2023

## TOOELE COUNTY MITIGATION STRATEGIES - 2021 TOOELE COUNTY PDMP

Hazard	Strategy	Strategy Informational Categories	Details
FLOOD - FUTURE RESIDENTS/PROPERTY	Preserve Floodplains and Open Space through ordinances land purchase conservation easements etc	NFIP compliant?	Helps reduce risk
		Pot. Funding Sources	County
		Priority	Medium
		Responsible Entity	County
		Timeframe	2022
FLOOD - FUTURE RESIDENTS/PROPERTY	Protect and Restore Natural Flood Mitigation Features through natural greenway protection and restoration	Estimated Cost	\$50 K - \$100 K
		NFIP compliant?	Helps reduce risk
		Pot. Funding Sources	County
		Priority	Medium
		Responsible Entity	County
FLOOD - FUTURE RESIDENTS/PROPERTY	Protect Infrastructure such as roads bridges wastewater treatment etc	Timeframe	2023
		Estimated Cost	\$1 Mil +
		NFIP compliant?	Helps reduce risk
		Pot. Funding Sources	County
		Priority	High
FLOOD - FUTURE RESIDENTS/PROPERTY	Remove Existing Structures from Flood Hazard Area	Responsible Entity	County
		Timeframe	2022
		NFIP compliant?	N/A
FLOOD - FUTURE RESIDENTS/PROPERTY	Review and/or Develop Codes Ordinances and Policies	Estimated Cost	\$25 K - \$50 K
		NFIP compliant?	Helps reduce risk
		Pot. Funding Sources	County
		Priority	High
		Responsible Entity	County
FLOOD - FUTURE RESIDENTS/PROPERTY	Stormwater Management Planning	Timeframe	2022
		Estimated Cost	\$25 K - \$50 K
		NFIP compliant?	Helps reduce risk
		Pot. Funding Sources	County
		Priority	Medium
		Responsible Entity	County
		Timeframe	2023
		Estimated Cost	\$25 K - \$50 K

## TOOELE COUNTY MITIGATION STRATEGIES - 2021 TOOELE COUNTY PDMP

Hazard	Strategy	Strategy Informational Categories	Details
LANDSLIDE/STEEP SLOPES - CURRENT RESIDENTS/PROPERTY	Apply soil stabilization measures such as planting soil stabilizing vegetation on steep publicly-owned slopes	NFIP compliant?	Helps reduce risk
		Pot. Funding Sources	County
		Priority	High
		Responsible Entity	County
		Timeframe	2022
LANDSLIDE/STEEP SLOPES - CURRENT RESIDENTS/PROPERTY	Create a plan to implement reinforcement measures in high-risk landslide areas	NFIP compliant?	N/A
LANDSLIDE/STEEP SLOPES - CURRENT RESIDENTS/PROPERTY	Develop an codes or regulation prohibiting or limiting structures in known landslide/steep slope risk areas	Estimated Cost	\$0 - \$25 K
		NFIP compliant?	Helps reduce risk
		Pot. Funding Sources	County
		Priority	High
		Responsible Entity	County
		Timeframe	2022
LANDSLIDE/STEEP SLOPES - CURRENT RESIDENTS/PROPERTY	Implement monitoring mechanisms/procedures (i.e. visual inspection or electronic monitoring systems)	NFIP compliant?	N/A
LANDSLIDE/STEEP SLOPES - CURRENT RESIDENTS/PROPERTY	Increase Landslide/Steep Slope Risk Awareness and Education (list specifics in comments)	Estimated Cost	\$0 - \$25 K
		NFIP compliant?	Helps reduce risk
		Pot. Funding Sources	County
		Priority	Medium
		Responsible Entity	County
		Timeframe	2022
LANDSLIDE/STEEP SLOPES - CURRENT RESIDENTS/PROPERTY	Install catch-fall nets for rocks at steep slopes near roadways	NFIP compliant?	N/A
LANDSLIDE/STEEP SLOPES - CURRENT RESIDENTS/PROPERTY	Locate and/or relocate utilities outside of landslide areas to decrease the risk of service disruption	Estimated Cost	\$100 K - \$250 K
		NFIP compliant?	Helps reduce risk
		Pot. Funding Sources	County
		Priority	Low
		Responsible Entity	County
		Timeframe	2023
LANDSLIDE/STEEP SLOPES - CURRENT RESIDENTS/PROPERTY	Prevent or Reduce Impacts from Landslides by Stabilizing Slopes	NFIP compliant?	N/A
LANDSLIDE/STEEP SLOPES - CURRENT RESIDENTS/PROPERTY	Remove Existing Building and Infrastructure from Landslide/Steep Slope Hazard Area	NFIP compliant?	N/A
LANDSLIDE/STEEP SLOPES - CURRENT RESIDENTS/PROPERTY	Require secondary water meters and smart irrigation controllers to reduce excessive groundwater near known landslide areas	NFIP compliant?	N/A
LANDSLIDE/STEEP SLOPES - CURRENT RESIDENTS/PROPERTY	Retrofit power water and sewer infrastructure	NFIP compliant?	N/A
		Estimated Cost	\$50 K - \$100 K

**TOOELE COUNTY MITIGATION STRATEGIES - 2021 TOOELE COUNTY PDMP**

Hazard	Strategy	Strategy Informational Categories	Details
LANDSLIDE/STEEP SLOPES - CURRENT RESIDENTS/PROPERTY	Use debris-flow measures that may reduce damage in sloping areas such as stabilization energy dissipation and flow control measures	NFIP compliant?	Helps reduce risk
		Pot. Funding Sources	County
		Priority	High
		Responsible Entity	County
		Timeframe	2022
LANDSLIDE/STEEP SLOPES - FUTURE RESIDENTS/PROPERTY	Apply soil stabilization measures such as planting soil stabilizing vegetation on steep publicly-owned slopes	Estimated Cost	\$50 K - \$100 K
		NFIP compliant?	Helps reduce risk
		Pot. Funding Sources	County
		Priority	High
		Responsible Entity	County
		Timeframe	2022
LANDSLIDE/STEEP SLOPES - FUTURE RESIDENTS/PROPERTY	Create a plan to implement reinforcement measures in high-risk landslide areas	NFIP compliant?	N/A
LANDSLIDE/STEEP SLOPES - FUTURE RESIDENTS/PROPERTY	Develop an codes or regulation prohibiting or limiting structures in known landslide/steep slope risk areas	NFIP compliant?	Helps reduce risk
		Pot. Funding Sources	County
		Priority	High
		Responsible Entity	County
		Timeframe	2022
LANDSLIDE/STEEP SLOPES - FUTURE RESIDENTS/PROPERTY	Implement monitoring mechanisms/procedures (i.e. visual inspection or electronic monitoring systems)	NFIP compliant?	N/A
LANDSLIDE/STEEP SLOPES - FUTURE RESIDENTS/PROPERTY	Increase Landslide/Steep Slope Risk Awareness and Education (list specifics in comments)	Estimated Cost	\$0 - \$25 K
		NFIP compliant?	Helps reduce risk
		Pot. Funding Sources	County
		Priority	High
		Responsible Entity	County
		Timeframe	2022
LANDSLIDE/STEEP SLOPES - FUTURE RESIDENTS/PROPERTY	Install catch-fall nets for rocks at steep slopes near roadways	NFIP compliant?	N/A
LANDSLIDE/STEEP SLOPES - FUTURE RESIDENTS/PROPERTY	Locate and/or relocate utilities outside of landslide areas to decrease the risk of service disruption	Estimated Cost	\$100 K - \$250 K
		NFIP compliant?	Helps reduce risk
		Pot. Funding Sources	County
		Priority	High
		Responsible Entity	County
		Timeframe	2025

## TOOELE COUNTY MITIGATION STRATEGIES - 2021 TOOELE COUNTY PDMP

Hazard	Strategy	Strategy Informational Categories	Details
LANDSLIDE/STEEP SLOPES - FUTURE RESIDENTS/PROPERTY	Prevent or Reduce Impacts from Landslides by Stabilizing Slopes	NFIP compliant?	N/A
LANDSLIDE/STEEP SLOPES - FUTURE RESIDENTS/PROPERTY	Remove Existing Building and Infrastructure from Landslide/Steep Slope Hazard Area	NFIP compliant?	N/A
LANDSLIDE/STEEP SLOPES - FUTURE RESIDENTS/PROPERTY	Require secondary water meters and smart irrigation controllers to reduce excessive groundwater near known landslide areas	NFIP compliant?	N/A
LANDSLIDE/STEEP SLOPES - FUTURE RESIDENTS/PROPERTY	Retrofit power water and sewer infrastructure	NFIP compliant?	N/A
LANDSLIDE/STEEP SLOPES - FUTURE RESIDENTS/PROPERTY	Use debris-flow measures that may reduce damage in sloping areas such as stabilization energy dissipation and flow control measures	Estimated Cost	\$50 K - \$100 K
		NFIP compliant?	Helps reduce risk
		Pot. Funding Sources	County
		Priority	High
		Responsible Entity	City
		Timeframe	2025
PROBLEM SOILS - CURRENT RESIDENTS/PROPERTY	Adopt an ordinance promoting permafrost sensitive construction practices	NFIP compliant?	N/A
PROBLEM SOILS - CURRENT RESIDENTS/PROPERTY	Develop a code or regulation prohibiting or limiting structures in known problem soil areas	Estimated Cost	\$0 - \$25 K
		NFIP compliant?	Helps reduce risk
		Pot. Funding Sources	County
		Priority	Low
		Responsible Entity	County
		Timeframe	2024
PROBLEM SOILS - CURRENT RESIDENTS/PROPERTY	Promote community awareness of risks and impacts from building in problem soil areas	NFIP compliant?	N/A
PROBLEM SOILS - CURRENT RESIDENTS/PROPERTY	Require geotechnical study to determine risk to structures in various geographic areas	Estimated Cost	\$0 - \$25 K
		NFIP compliant?	Helps reduce risk
		Pot. Funding Sources	County
		Priority	Medium
		Responsible Entity	County
		Timeframe	2022
PROBLEM SOILS - CURRENT RESIDENTS/PROPERTY	Restrict development in areas with soil that is considered poor or unsuitable for development	Estimated Cost	\$0 - \$25 K
		NFIP compliant?	Helps reduce risk
		Pot. Funding Sources	County
		Priority	Medium
		Responsible Entity	County
		Timeframe	2022
PROBLEM SOILS - CURRENT RESIDENTS/PROPERTY	Retrofit or remove existing structures from problem soil areas	NFIP compliant?	N/A



## TOOELE COUNTY MITIGATION STRATEGIES - 2021 TOOELE COUNTY PDMP

Hazard	Strategy	Strategy Informational Categories	Details
PROBLEM SOILS - FUTURE RESIDENTS/PROPERTY	Adopt an ordinance promoting permafrost sensitive construction practices	NFIP compliant?	N/A
PROBLEM SOILS - FUTURE RESIDENTS/PROPERTY	Develop a code or regulation prohibiting or limiting structures in known problem soil areas	Estimated Cost	\$0 - \$25 K
		NFIP compliant?	Helps reduce risk
		Pot. Funding Sources	County
		Priority	Low
		Responsible Entity	County
		Timeframe	2024
PROBLEM SOILS - FUTURE RESIDENTS/PROPERTY	Promote community awareness of risks and impacts from building in problem soil areas	NFIP compliant?	N/A
PROBLEM SOILS - FUTURE RESIDENTS/PROPERTY	Require geotechnical study to determine risk to structures in various geographic areas	Estimated Cost	\$0 - \$25 K
		NFIP compliant?	Helps reduce risk
		Pot. Funding Sources	County
		Priority	Medium
		Responsible Entity	County
		Timeframe	2024
PROBLEM SOILS - FUTURE RESIDENTS/PROPERTY	Restrict development in areas with soil that is considered poor or unsuitable for development	Estimated Cost	\$0 - \$25 K
		NFIP compliant?	Helps reduce risk
		Pot. Funding Sources	County
		Priority	Medium
		Responsible Entity	County
		Timeframe	2024
PROBLEM SOILS - FUTURE RESIDENTS/PROPERTY	Retrofit or remove existing structures from problem soil areas	NFIP compliant?	N/A
RADON - CURRENT RESIDENTS/PROPERTY	Advertise radon testing equipment	NFIP compliant?	N/A
RADON - CURRENT RESIDENTS/PROPERTY	Develop and distribute radon hazard guides for homeowners and businesses	NFIP compliant?	N/A
RADON - CURRENT RESIDENTS/PROPERTY	Develop radon prevention standards and regulations for new housing including installation of ventilation systems in high hazard areas	NFIP compliant?	N/A
RADON - CURRENT RESIDENTS/PROPERTY	Encourage homeowners to install radon systems in home	NFIP compliant?	N/A
RADON - CURRENT RESIDENTS/PROPERTY	Encourage homeowners to test for radon	NFIP compliant?	N/A
RADON - CURRENT RESIDENTS/PROPERTY	Require testing at existing facilities and homes during and/or immediately after construction	NFIP compliant?	N/A
RADON - CURRENT RESIDENTS/PROPERTY	Retrofit homes with radon ventilation systems	NFIP compliant?	N/A
RADON - CURRENT RESIDENTS/PROPERTY	Review and/or Develop Codes Ordinances and Policies	NFIP compliant?	N/A
RADON - FUTURE RESIDENTS/PROPERTY	Advertise radon testing equipment	NFIP compliant?	N/A
RADON - FUTURE RESIDENTS/PROPERTY	Develop and distribute radon hazard guides for homeowners and businesses	NFIP compliant?	N/A

## TOOELE COUNTY MITIGATION STRATEGIES - 2021 TOOELE COUNTY PDMP

Hazard	Strategy	Strategy Informational Categories	Details
RADON - FUTURE RESIDENTS/PROPERTY	Develop radon prevention standards and regulations for new housing including installation of ventilation systems in high hazard areas	NFIP compliant?	N/A
RADON - FUTURE RESIDENTS/PROPERTY	Encourage homeowners to install radon systems in home	NFIP compliant?	N/A
RADON - FUTURE RESIDENTS/PROPERTY	Encourage homeowners to test for radon	NFIP compliant?	N/A
RADON - FUTURE RESIDENTS/PROPERTY	Require testing at existing facilities and homes during and/or immediately after construction	NFIP compliant?	N/A
RADON - FUTURE RESIDENTS/PROPERTY	Retrofit homes with radon ventilation systems	NFIP compliant?	N/A
RADON - FUTURE RESIDENTS/PROPERTY	Review and/or Develop Codes Ordinances and Policies	NFIP compliant?	N/A
SEVERE WEATHER - CURRENT RESIDENTS/PROPERTY	Conduct Outreach Activities Increase and Public Awareness (specify below in comments)	Estimated Cost	\$0 - \$25 K
		NFIP compliant?	Helps reduce risk
		Pot. Funding Sources	County
		Priority	High
		Responsible Entity	County
		Timeframe	2022
SEVERE WEATHER - CURRENT RESIDENTS/PROPERTY	Protect Life Safety and Property Damage of Residential Buildings through applicable architecture and retrofits	Estimated Cost	\$0 - \$25 K
		NFIP compliant?	Helps reduce risk
		Pot. Funding Sources	County
		Priority	Low
		Responsible Entity	County
		Timeframe	2023
SEVERE WEATHER - CURRENT RESIDENTS/PROPERTY	Provide Weather-Related Information through Print Broadcast and Social Media	Estimated Cost	\$0 - \$25 K
		NFIP compliant?	Helps reduce risk
		Pot. Funding Sources	County
		Priority	High
		Responsible Entity	County
		Timeframe	2022
SEVERE WEATHER - CURRENT RESIDENTS/PROPERTY	Reducing Impacts of Wind Hail Lightning through structural projects i.e. windbreaks	NFIP compliant?	N/A
SEVERE WEATHER - CURRENT RESIDENTS/PROPERTY	Retrofit Public Buildings and Critical Facilities/Infrastructure (specify below in comments)	Estimated Cost	\$0 - \$25 K
		NFIP compliant?	Helps reduce risk
		Pot. Funding Sources	County
		Priority	Low
		Responsible Entity	County
		Timeframe	2023

## TOOELE COUNTY MITIGATION STRATEGIES - 2021 TOOELE COUNTY PDMP

Hazard	Strategy	Strategy Informational Categories	Details
SEVERE WEATHER - CURRENT RESIDENTS/PROPERTY	Review and/or Develop Codes Ordinances and Policies	Estimated Cost	\$0 - \$25 K
		NFIP compliant?	Helps reduce risk
		Pot. Funding Sources	County
		Priority	Low
		Responsible Entity	County
		Timeframe	2023
SEVERE WEATHER - CURRENT RESIDENTS/PROPERTY	Use natural environmental features as wind buffers in site design	NFIP compliant?	N/A
SEVERE WEATHER - FUTURE RESIDENTS/PROPERTY	Conduct Outreach Activities Increase and Public Awareness (specify below in comments)	Estimated Cost	\$0 - \$25 K
		NFIP compliant?	Helps reduce risk
		Pot. Funding Sources	County
		Priority	High
		Responsible Entity	County
		Timeframe	2022
SEVERE WEATHER - FUTURE RESIDENTS/PROPERTY	Protect Life Safety and Property Damage of Residential Buildings through applicable architecture and retrofits	Estimated Cost	\$0 - \$25 K
		NFIP compliant?	Helps reduce risk
		Pot. Funding Sources	County
		Priority	Low
		Responsible Entity	County
		Timeframe	2022
SEVERE WEATHER - FUTURE RESIDENTS/PROPERTY	Provide Weather-Related Information through Print Broadcast and Social Media	Estimated Cost	\$0 - \$25 K
		NFIP compliant?	Helps reduce risk
		Pot. Funding Sources	County
		Priority	High
		Responsible Entity	County
		Timeframe	2022
SEVERE WEATHER - FUTURE RESIDENTS/PROPERTY	Reducing Impacts of Wind Hail Lightning through structural projects i.e. windbreaks	NFIP compliant?	N/A
SEVERE WEATHER - FUTURE RESIDENTS/PROPERTY	Retrofit Public Buildings and Critical Facilities/Infrastructure (specify below in comments)	Estimated Cost	\$0 - \$25 K
		NFIP compliant?	Helps reduce risk
		Pot. Funding Sources	County
		Priority	Low
		Responsible Entity	County

## TOOELE COUNTY MITIGATION STRATEGIES - 2021 TOOELE COUNTY PDMP

Hazard	Strategy	Strategy Informational Categories	Details
		Timeframe	2022
SEVERE WEATHER - FUTURE RESIDENTS/PROPERTY	Review and/or Develop Codes Ordinances and Policies	Estimated Cost	\$0 - \$25 K
		NFIP compliant?	Helps reduce risk
		Pot. Funding Sources	County
		Priority	Low
		Responsible Entity	County
		Timeframe	2023
SEVERE WEATHER - FUTURE RESIDENTS/PROPERTY	Use natural environmental features as wind buffers in site design	NFIP compliant?	N/A
TORNADO - CURRENT RESIDENTS/PROPERTY	Appropriate engineering controls (such as deflection structures) are designed and installed to mitigate the hazard	NFIP compliant?	N/A
TORNADO - CURRENT RESIDENTS/PROPERTY	Conduct Outreach Activities to Increase Awareness of Tornado Risk (Specify below in comments)	NFIP compliant?	N/A
TORNADO - CURRENT RESIDENTS/PROPERTY	Develop an tornado codes or regulation prohibiting or limiting structures in known tornado areas	NFIP compliant?	N/A
TORNADO - CURRENT RESIDENTS/PROPERTY	Encourage Construction of Safe Rooms (Specify below in comments)	NFIP compliant?	N/A
TORNADO - CURRENT RESIDENTS/PROPERTY	Require Wind-Resistant Building Techniques	NFIP compliant?	N/A
TORNADO - CURRENT RESIDENTS/PROPERTY	Require Wind-Resistant Building Techniques	NFIP compliant?	N/A
TORNADO - FUTURE RESIDENTS/PROPERTY	Appropriate engineering controls (such as deflection structures) are designed and installed to mitigate the hazard	NFIP compliant?	N/A
TORNADO - FUTURE RESIDENTS/PROPERTY	Conduct Outreach Activities to Increase Awareness of Tornado Risk (Specify below in comments)	NFIP compliant?	N/A
TORNADO - FUTURE RESIDENTS/PROPERTY	Develop an tornado codes or regulation prohibiting or limiting structures in known tornado areas	NFIP compliant?	N/A
TORNADO - FUTURE RESIDENTS/PROPERTY	Encourage Construction of Safe Rooms (Specify below in comments)	NFIP compliant?	N/A
TORNADO - FUTURE RESIDENTS/PROPERTY	Require Wind-Resistant Building Techniques	NFIP compliant?	N/A
TORNADO - FUTURE RESIDENTS/PROPERTY	Require Wind-Resistant Building Techniques	NFIP compliant?	N/A
WILDFIRE - CURRENT RESIDENTS/PROPERTY	Address density and quantity of development as well emergency access landscaping and water supply	Estimated Cost	\$25 K - \$50 K
		NFIP compliant?	Helps reduce risk
		Pot. Funding Sources	County
		Priority	High
		Responsible Entity	County
		Timeframe	2022
WILDFIRE - CURRENT RESIDENTS/PROPERTY	Adopt and Enforce Building Codes and Development Standards	Estimated Cost	\$0 - \$25 K
		NFIP compliant?	Helps reduce risk
		Pot. Funding Sources	County
		Priority	High
		Responsible Entity	County

## TOOELE COUNTY MITIGATION STRATEGIES - 2021 TOOELE COUNTY PDMP

Hazard	Strategy	Strategy Informational Categories	Details
		Timeframe	2022
WILDFIRE - CURRENT RESIDENTS/PROPERTY	Develop a community wildfire preparedness plan	Estimated Cost	\$50 K - \$100 K
		NFIP compliant?	Helps reduce risk
		Pot. Funding Sources	County
		Priority	High
		Responsible Entity	County
		Timeframe	2022
WILDFIRE - CURRENT RESIDENTS/PROPERTY	Develop wildfire and/or Wildland Urban Interface (WUI) codes or regulation prohibiting or limiting structures in known wildfire risk areas	Estimated Cost	\$25 K - \$50 K
		NFIP compliant?	Helps reduce risk
		Pot. Funding Sources	County
		Priority	High
		Responsible Entity	County
		Timeframe	2022
WILDFIRE - CURRENT RESIDENTS/PROPERTY	Educate Property Owners about Wildfire Mitigation Techniques (List specifics below in comments)	Estimated Cost	\$25 K - \$50 K
		NFIP compliant?	Helps reduce risk
		Pot. Funding Sources	County
		Priority	High
		Responsible Entity	County
		Timeframe	2022
WILDFIRE - CURRENT RESIDENTS/PROPERTY	Ensure newly constructed government-owned facilities are code compliant for wildfire hazards and promote the use of enhanced wildfire mitigation practices	Estimated Cost	\$25 K - \$50 K
		NFIP compliant?	Helps reduce risk
		Pot. Funding Sources	County
		Priority	High
		Responsible Entity	County
		Timeframe	2022
WILDFIRE - CURRENT RESIDENTS/PROPERTY	Implement a Fuels Management Program	Estimated Cost	\$25 K - \$50 K
		NFIP compliant?	Helps reduce risk
		Pot. Funding Sources	County
		Priority	High
		Responsible Entity	County
		Timeframe	2022

## TOOELE COUNTY MITIGATION STRATEGIES - 2021 TOOELE COUNTY PDMP

Hazard	Strategy	Strategy Informational Categories	Details
WILDFIRE - CURRENT RESIDENTS/PROPERTY	Include considerations of wildfire hazards in land use public safety and other processes	Estimated Cost	\$0 - \$25 K
		NFIP compliant?	Helps reduce risk
		Pot. Funding Sources	County
		Priority	High
		Responsible Entity	County
		Timeframe	2023
WILDFIRE - CURRENT RESIDENTS/PROPERTY	Mandate wildfire planning be incorporated into development and land use planning	Estimated Cost	\$50 K - \$100 K
		NFIP compliant?	Helps reduce risk
		Pot. Funding Sources	County
		Priority	High
		Responsible Entity	County
		Timeframe	2022
WILDFIRE - CURRENT RESIDENTS/PROPERTY	Mitigate Against Post-Wildfire Flooding via structural projects in drainage areas	Estimated Cost	\$100 K - \$250 K
		NFIP compliant?	Helps reduce risk
		Pot. Funding Sources	County
		Priority	High
		Responsible Entity	County
		Timeframe	2022
WILDFIRE - CURRENT RESIDENTS/PROPERTY	Participate in Firewise Program	Estimated Cost	\$25 K - \$50 K
		NFIP compliant?	Helps reduce risk
		Pot. Funding Sources	County
		Priority	High
		Responsible Entity	County
		Timeframe	2022
WILDFIRE - CURRENT RESIDENTS/PROPERTY	Promote conservation of open space or wildland-urban boundary zones to separate developed areas from high-hazard areas	Estimated Cost	\$25 K - \$50 K
		NFIP compliant?	Helps reduce risk
		Pot. Funding Sources	County
		Priority	Low
		Responsible Entity	County
		Timeframe	2022
		Estimated Cost	\$25 K - \$50 K



## TOOELE COUNTY MITIGATION STRATEGIES - 2021 TOOELE COUNTY PDMP

Hazard	Strategy	Strategy Informational Categories	Details
WILDFIRE - CURRENT RESIDENTS/PROPERTY	Set guidelines for annexation and service extensions in high-risk areas	NFIP compliant?	Helps reduce risk
		Pot. Funding Sources	County
		Priority	High
		Responsible Entity	County
		Timeframe	2022
WILDFIRE - CURRENT RESIDENTS/PROPERTY	Structural and defensible space requirements	Estimated Cost	\$25 K - \$50 K
		NFIP compliant?	Helps reduce risk
		Pot. Funding Sources	County
		Priority	High
		Responsible Entity	County
WILDFIRE - CURRENT RESIDENTS/PROPERTY	Use zoning and/or a special wildfire overlay district to designate high-risk areas and specify the conditions for the use and development of specific areas	Estimated Cost	\$25 K - \$50 K
		NFIP compliant?	Helps reduce risk
		Pot. Funding Sources	County
		Priority	High
		Responsible Entity	County
WILDFIRE - FUTURE RESIDENTS/PROPERTY	Address density and quantity of development as well emergency access landscaping and water supply	Estimated Cost	\$25 K - \$50 K
		NFIP compliant?	Helps reduce risk
		Pot. Funding Sources	County
		Priority	High
		Responsible Entity	County
WILDFIRE - FUTURE RESIDENTS/PROPERTY	Adopt and Enforce Building Codes and Development Standards	Estimated Cost	\$0 - \$25 K
		NFIP compliant?	Helps reduce risk
		Pot. Funding Sources	County
		Priority	High
		Responsible Entity	County
		Estimated Cost	\$25 K - \$50 K
		NFIP compliant?	Helps reduce risk

## TOOELE COUNTY MITIGATION STRATEGIES - 2021 TOOELE COUNTY PDMP

Hazard	Strategy	Strategy Informational Categories	Details
WILDFIRE - FUTURE RESIDENTS/PROPERTY	Develop a community wildfire preparedness plan	Pot. Funding Sources	County
		Priority	High
		Responsible Entity	County
		Timeframe	2023
WILDFIRE - FUTURE RESIDENTS/PROPERTY	Develop wildfire and/or Wildland Urban Interface (WUI) codes or regulation prohibiting or limiting structures in known wildfire risk areas	Estimated Cost	\$0 - \$25 K
		NFIP compliant?	Helps reduce risk
		Pot. Funding Sources	County
		Priority	High
		Responsible Entity	County
WILDFIRE - FUTURE RESIDENTS/PROPERTY	Educate Property Owners about Wildfire Mitigation Techniques (List specifics below in comments)	Timeframe	2022
		Estimated Cost	\$0 - \$25 K
		NFIP compliant?	Helps reduce risk
		Pot. Funding Sources	County
		Priority	High
		Responsible Entity	County
WILDFIRE - FUTURE RESIDENTS/PROPERTY	Ensure newly constructed government-owned facilities are code compliant for wildfire hazards and promote the use of enhanced wildfire mitigation practices	Timeframe	2022
		Estimated Cost	\$25 K - \$50 K
		NFIP compliant?	Helps reduce risk
		Pot. Funding Sources	County
		Priority	High
		Responsible Entity	County
WILDFIRE - FUTURE RESIDENTS/PROPERTY	Implement a Fuels Management Program	Timeframe	2022
		Estimated Cost	\$25 K - \$50 K
		NFIP compliant?	Helps reduce risk
		Pot. Funding Sources	County
		Priority	High
		Responsible Entity	County
WILDFIRE - FUTURE RESIDENTS/PROPERTY	Include considerations of wildfire hazards in land use, public safety, and other processes	Timeframe	2022
		Estimated Cost	\$25 K - \$50 K
		NFIP compliant?	Helps reduce risk

## TOOELE COUNTY MITIGATION STRATEGIES - 2021 TOOELE COUNTY PDMP

Hazard	Strategy	Strategy Informational Categories	Details
WILDFIRE - FUTURE RESIDENTS/PROPERTY	Include considerations of wildfire hazards in land use, public safety, and other processes	Priority	High
		Responsible Entity	County
		Timeframe	2022
WILDFIRE - FUTURE RESIDENTS/PROPERTY	Mandate wildfire planning be incorporated into development and land use planning	Estimated Cost	\$25 K - \$50 K
		NFIP compliant?	Helps reduce risk
		Pot. Funding Sources	County
		Priority	High
		Responsible Entity	County
		Timeframe	2022
WILDFIRE - FUTURE RESIDENTS/PROPERTY	Mitigate Against Post-Wildfire Flooding via structural projects in drainage areas	Estimated Cost	\$100 K - \$250 K
		NFIP compliant?	Helps reduce risk
		Pot. Funding Sources	County
		Priority	High
		Responsible Entity	County
		Timeframe	2022
WILDFIRE - FUTURE RESIDENTS/PROPERTY	Participate in Firewise Program	Estimated Cost	\$25 K - \$50 K
		NFIP compliant?	Helps reduce risk
		Pot. Funding Sources	County
		Priority	High
		Responsible Entity	County
		Timeframe	2022
WILDFIRE - FUTURE RESIDENTS/PROPERTY	Promote conservation of open space or wildland-urban boundary zones to separate developed areas from high-hazard areas	Estimated Cost	\$0 - \$25 K
		NFIP compliant?	Helps reduce risk
		Pot. Funding Sources	County
		Priority	Low
		Responsible Entity	County
		Timeframe	2022
WILDFIRE - FUTURE RESIDENTS/PROPERTY	Set guidelines for annexation and service extensions in high-risk areas	Estimated Cost	\$25 K - \$50 K
		NFIP compliant?	Helps reduce risk
		Pot. Funding Sources	County
		Priority	High

## TOOELE COUNTY MITIGATION STRATEGIES - 2021 TOOELE COUNTY PDMP

Hazard	Strategy	Strategy Informational Categories	Details
		Responsible Entity	County
		Timeframe	2023
WILDFIRE - FUTURE RESIDENTS/PROPERTY	Structural and defensible space requirements	Estimated Cost	\$25 K - \$50 K
		NFIP compliant?	Helps reduce risk
		Pot. Funding Sources	County
		Priority	High
		Responsible Entity	County
		Timeframe	2022
WILDFIRE - FUTURE RESIDENTS/PROPERTY	Use zoning and/or a special wildfire overlay district to designate high-risk areas and specify the conditions for the use and development of specific areas	Estimated Cost	\$25 K - \$50 K
		NFIP compliant?	Helps reduce risk
		Pot. Funding Sources	County
		Priority	High
		Responsible Entity	County
		Timeframe	2022

## 5.7.5.1 STANSBURY PARK I.D. - MITIGATION STRATEGIES

### STANSBURY PARK I.D. MITIGATION STRATEGIES - 2021 TOOELE COUNTY PDMP

Hazard	Strategy	Strategy Informational Categories	Details
DROUGHT - CURRENT RESIDENTS/PROPERTY	Designate and or preserve adequate source water protection zones or groundwater recharge areas	Priority	Medium
		Pot. Funding Sources	Local
		NFIP compliant?	Helps reduce risk
		Responsible Entity	City
		Estimated Cost	\$25 K - \$50 K
		Timeframe	2025
DROUGHT - CURRENT RESIDENTS/PROPERTY	Educate Decision Makers and Government Employees on Water Saving Techniques (list event details in "comments")	Priority	Low
		Pot. Funding Sources	Local
		NFIP compliant?	Helps reduce risk
		Responsible Entity	City
		Estimated Cost	\$0 - \$25 K
		Timeframe	2025
DROUGHT - CURRENT RESIDENTS/PROPERTY	Educate Residents on Water Saving Techniques (list event details in "comments")	Priority	Medium
		Pot. Funding Sources	Local
		NFIP compliant?	Helps reduce risk
		Responsible Entity	City
		Estimated Cost	\$0 - \$25 K
		Timeframe	2025
DROUGHT - CURRENT RESIDENTS/PROPERTY	Educate the Agriculture Sector on Soil and Water Saving Practices (list event details in "comments")	NFIP compliant?	N/A
DROUGHT - CURRENT RESIDENTS/PROPERTY	Enforce codes ordinances statues and laws that promote drought resiliency and water conservation practices	NFIP compliant?	N/A
		Priority	Medium
		Pot. Funding Sources	Local
		Responsible Entity	City
		Estimated Cost	\$0 - \$25 K
		Timeframe	2025
DROUGHT - CURRENT RESIDENTS/PROPERTY	Expand and Improve Existing Potable Water Systems	Priority	Medium
		Pot. Funding Sources	Local
		NFIP compliant?	Helps reduce risk
		Responsible Entity	City
		Estimated Cost	\$500 K - \$1 Mil

## STANSBURY PARK I.D. MITIGATION STRATEGIES - 2021 TOOELE COUNTY PDMP

Hazard	Strategy	Strategy Informational Categories	Details
		Timeframe	2025
DROUGHT - CURRENT RESIDENTS/PROPERTY	Improve Public Water Infrastructure and Management with Water Provider	Pot. Funding Sources	Other State
		NFIP compliant?	N/A
		Priority	Medium
		Responsible Entity	City
		Estimated Cost	\$1 Mil +
		Timeframe	2030
DROUGHT - CURRENT RESIDENTS/PROPERTY	Monitor Water Supply for leaks system failures inefficiencies etc. via monitoring system and audits	Priority	Medium
		Pot. Funding Sources	Local
		NFIP compliant?	Helps reduce risk
		Responsible Entity	City
		Estimated Cost	\$0 - \$25 K
		Timeframe	2025
DROUGHT - CURRENT RESIDENTS/PROPERTY	Plan and Prepare for Drought via emergency planning and warning systems	Priority	Medium
		Pot. Funding Sources	Local
		NFIP compliant?	Helps reduce risk
		Responsible Entity	City
		Estimated Cost	\$0 - \$25 K
		Timeframe	2025
DROUGHT - CURRENT RESIDENTS/PROPERTY	Retrofit Water Supply Systems to handle current and new growth	Priority	Medium
		Pot. Funding Sources	Local
		NFIP compliant?	Helps reduce risk
		Responsible Entity	City
		Estimated Cost	\$500 K - \$1 Mil
		Timeframe	2025
DROUGHT - CURRENT RESIDENTS/PROPERTY	Update and adopt drought ordinances	Priority	Medium
		Pot. Funding Sources	Local
		NFIP compliant?	Helps reduce risk
		Responsible Entity	City
		Estimated Cost	\$0 - \$25 K

## STANSBURY PARK I.D. MITIGATION STRATEGIES - 2021 TOOELE COUNTY PDMP

Hazard	Strategy	Strategy Informational Categories	Details
		Timeframe	2025
DROUGHT - FUTURE RESIDENTS/PROPERTY	Other strategies and/or comments:		Answers are the same to Future Drought Growth as with Current Drought
EARTHQUAKE - CURRENT RESIDENTS/PROPERTY	Building Code Adoption and Enforcement	NFIP compliant?	N/A
EARTHQUAKE - CURRENT RESIDENTS/PROPERTY	Conduct Building Safety Inspections	NFIP compliant?	N/A
EARTHQUAKE - CURRENT RESIDENTS/PROPERTY	Conduct Outreach to Builders Architects Engineers and Inspectors	NFIP compliant?	N/A
EARTHQUAKE - CURRENT RESIDENTS/PROPERTY	Develop and/or review or adopt model earthquake hazard ordinance	Priority	Medium
		Pot. Funding Sources	Local
		NFIP compliant?	Helps reduce risk
		Responsible Entity	City
		Estimated Cost	\$0 - \$25 K
		Timeframe	2025
EARTHQUAKE - CURRENT RESIDENTS/PROPERTY	Establish a "green infrastructure" program to link manage and expand existing parks preserves greenways etc	Priority	Medium
		Pot. Funding Sources	Local
		NFIP compliant?	Helps reduce risk
		Responsible Entity	City
		Estimated Cost	\$0 - \$25 K
		Timeframe	2025
EARTHQUAKE - CURRENT RESIDENTS/PROPERTY	Increase Awareness and Education of Earthquakes through an educational event	Priority	Medium
		Pot. Funding Sources	Local
		NFIP compliant?	Helps reduce risk
		Responsible Entity	City
		Estimated Cost	\$0 - \$25 K
		Timeframe	2025
EARTHQUAKE - CURRENT RESIDENTS/PROPERTY	Local Planning such as critical facilities planning financial incentives creating a safety committee emergency planning etc	Priority	Medium
		Pot. Funding Sources	Local
		NFIP compliant?	Helps reduce risk
		Responsible Entity	City
		Estimated Cost	\$0 - \$25 K
		Timeframe	2025
EARTHQUAKE - CURRENT RESIDENTS/PROPERTY	Retrofit Critical Facilities and Infrastructure to Withstand Earthquakes (list specifics in "comments" section)	NFIP compliant?	N/A



## STANSBURY PARK I.D. MITIGATION STRATEGIES - 2021 TOOELE COUNTY PDMP

Hazard	Strategy	Strategy Informational Categories	Details
EARTHQUAKE - FUTURE RESIDENTS/PROPERTY	Other strategies and/or comments:		Same answers to future growth as current growth
FLOOD - CURRENT RESIDENTS/PROPERTY	Adopt and Enforce Building Codes and Development Standards	NFIP compliant?	N/A
FLOOD - CURRENT RESIDENTS/PROPERTY	Conduct Regular Maintenance for Drainage Systems and Flood Control Structures	Priority	Medium
		Pot. Funding Sources	Local
		NFIP compliant?	Helps reduce risk
		Responsible Entity	City
		Estimated Cost	\$500 K - \$1 Mil
		Timeframe	2025
FLOOD - CURRENT RESIDENTS/PROPERTY	Coordination and Partnerships i.e. develop stormwater committee regional watershed council local councils etc	Priority	Medium
		Pot. Funding Sources	Local
		NFIP compliant?	Helps reduce risk
		Responsible Entity	City
		Estimated Cost	\$0 - \$25 K
		Timeframe	2025
FLOOD - CURRENT RESIDENTS/PROPERTY	Elevate or Retrofit Facilities and Infrastructure	Priority	Medium
		Pot. Funding Sources	Local
		NFIP compliant?	Helps reduce risk
		Responsible Entity	City
		Estimated Cost	\$0 - \$25 K
		Timeframe	2025
FLOOD - CURRENT RESIDENTS/PROPERTY	Floodproof At-Risk Residential and Non-Residential Structures	Priority	Medium
		Pot. Funding Sources	Local
		NFIP compliant?	Helps reduce risk
		Responsible Entity	City
		Estimated Cost	\$0 - \$25 K
		Timeframe	2025
FLOOD - CURRENT RESIDENTS/PROPERTY	Improve Stormwater Drainage Capacity	Priority	Medium
		Pot. Funding Sources	Local
		NFIP compliant?	Helps reduce risk
		Responsible Entity	City

## STANSBURY PARK I.D. MITIGATION STRATEGIES - 2021 TOOELE COUNTY PDMP

Hazard	Strategy	Strategy Informational Categories	Details
		Timeframe	2025
FLOOD - CURRENT RESIDENTS/PROPERTY	Information and educational events (list details in "comments" section)	Priority	Medium
		Pot. Funding Sources	Local
		NFIP compliant?	Helps reduce risk
		Responsible Entity	City
		Estimated Cost	\$0 - \$25 K
		Timeframe	2025
FLOOD - CURRENT RESIDENTS/PROPERTY	Other local planning mechanisms such as joining the NFIP creating risk plans establishing green infrastructure plan etc	NFIP compliant?	N/A
FLOOD - CURRENT RESIDENTS/PROPERTY	Preserve Floodplains and Open Space through ordinances land purchase conservation easements etc	Priority	Medium
		Pot. Funding Sources	Local
		NFIP compliant?	Helps reduce risk
		Responsible Entity	City
		Estimated Cost	\$0 - \$25 K
		Timeframe	2025
FLOOD - CURRENT RESIDENTS/PROPERTY	Protect and Restore Natural Flood Mitigation Features through natural greenway protection and restoration	Priority	Medium
		Pot. Funding Sources	Local
		NFIP compliant?	Helps reduce risk
		Responsible Entity	City
		Estimated Cost	\$25 K - \$50 K
		Timeframe	2025
FLOOD - CURRENT RESIDENTS/PROPERTY	Protect Infrastructure such as roads bridges wastewater treatment etc	Priority	Medium
		Pot. Funding Sources	Local
		NFIP compliant?	Helps reduce risk
		Responsible Entity	County
		Estimated Cost	\$500 K - \$1 Mil
		Timeframe	2025
FLOOD - CURRENT RESIDENTS/PROPERTY	Remove Existing Structures from Flood Hazard Area	NFIP compliant?	N/A
FLOOD - CURRENT RESIDENTS/PROPERTY	Review and/or Develop Codes Ordinances and Policies	Priority	Medium
		Pot. Funding Sources	Local
		NFIP compliant?	Helps reduce risk

## STANSBURY PARK I.D. MITIGATION STRATEGIES - 2021 TOOELE COUNTY PDMP

Hazard	Strategy	Strategy Informational Categories	Details
FLOOD - CURRENT RESIDENTS/PROPERTY	Review and/or develop codes, ordinances and policies	Responsible Entity	City
		Estimated Cost	\$0 - \$25 K
		Timeframe	2025
FLOOD - CURRENT RESIDENTS/PROPERTY	Stormwater Management Planning	Pot. Funding Sources	Local
		Priority	High
		NFIP compliant?	Helps reduce risk
		Responsible Entity	City
		Estimated Cost	\$0 - \$25 K
		Timeframe	2025
FLOOD - FUTURE RESIDENTS/PROPERTY	Other strategies and/or comments:		Same answers for Future as with current
LANDSLIDE/STEEP SLOPES - CURRENT RESIDENTS/PROPERTY	Other strategies and/or comments:		Not Pertinent
			Not Pertinent
PROBLEM SOILS - CURRENT RESIDENTS/PROPERTY	Adopt an ordinance promoting permafrost sensitive construction practices	NFIP compliant?	N/A
PROBLEM SOILS - CURRENT RESIDENTS/PROPERTY	Develop a code or regulation prohibiting or limiting structures in known problem soil areas	Priority	Medium
		NFIP compliant?	Helps reduce risk
		Pot. Funding Sources	County
		Responsible Entity	County
		Estimated Cost	\$0 - \$25 K
		Timeframe	2025
PROBLEM SOILS - CURRENT RESIDENTS/PROPERTY	Promote community awareness of risks and impacts from building in problem soil areas	Priority	Medium
		NFIP compliant?	Helps reduce risk
		Pot. Funding Sources	County
		Responsible Entity	County
		Estimated Cost	\$0 - \$25 K
		Timeframe	2025
PROBLEM SOILS - CURRENT RESIDENTS/PROPERTY	Require geotechnical study to determine risk to structures in various geographic areas	Priority	Medium
		NFIP compliant?	Helps reduce risk
		Pot. Funding Sources	County
		Responsible Entity	County
		Estimated Cost	\$25 K - \$50 K

## STANSBURY PARK I.D. MITIGATION STRATEGIES - 2021 TOOELE COUNTY PDMP

Hazard	Strategy	Strategy Informational Categories	Details
		Timeframe	2025
PROBLEM SOILS - CURRENT RESIDENTS/PROPERTY	Restrict development in areas with soil that is considered poor or unsuitable for development	Priority	Medium
		NFIP compliant?	Helps reduce risk
		Pot. Funding Sources	County
		Responsible Entity	County
		Estimated Cost	\$0 - \$25 K
		Timeframe	2025
PROBLEM SOILS - CURRENT RESIDENTS/PROPERTY	Retrofit or remove existing structures from problem soil areas	NFIP compliant?	N/A
PROBLEM SOILS - FUTURE RESIDENTS/PROPERTY	Other strategies and/or comments:		same answers given for current apply to future soils
			Not Pertinent
			Not Pertinent
SEVERE WEATHER - CURRENT RESIDENTS/PROPERTY	Conduct Outreach Activities Increase and Public Awareness (specify below in comments)	Priority	Low
		Pot. Funding Sources	Local
		NFIP compliant?	Helps reduce risk
		Responsible Entity	City
		Estimated Cost	\$0 - \$25 K
		Timeframe	2025
SEVERE WEATHER - CURRENT RESIDENTS/PROPERTY	Protect Life Safety and Property Damage of Residential Buildings through applicable architecture and retrofits	Priority	Low
		NFIP compliant?	Helps reduce risk
		Pot. Funding Sources	County
		Responsible Entity	County
		Estimated Cost	\$0 - \$25 K
		Timeframe	2025
SEVERE WEATHER - CURRENT RESIDENTS/PROPERTY	Provide Weather-Related Information through Print Broadcast and Social Media	Priority	Low
		Pot. Funding Sources	Local
		NFIP compliant?	Helps reduce risk
		Responsible Entity	City
		Estimated Cost	\$0 - \$25 K
		Timeframe	2025
		Priority	Low

## STANSBURY PARK I.D. MITIGATION STRATEGIES - 2021 TOOELE COUNTY PDMP

Hazard	Strategy	Strategy Informational Categories	Details
SEVERE WEATHER - CURRENT RESIDENTS/PROPERTY	Reducing Impacts of Wind Hail Lightning through structural projects i.e. windbreaks	NFIP compliant?	Helps reduce risk
		Pot. Funding Sources	County
		Responsible Entity	County
		Estimated Cost	\$0 - \$25 K
		Timeframe	2025
SEVERE WEATHER - CURRENT RESIDENTS/PROPERTY	Retrofit Public Buildings and Critical Facilities/Infrastructure (specify below in comments)	Priority	Low
		NFIP compliant?	Helps reduce risk
		Pot. Funding Sources	County
		Responsible Entity	County
		Estimated Cost	\$0 - \$25 K
SEVERE WEATHER - CURRENT RESIDENTS/PROPERTY	Review and/or Develop Codes Ordinances and Policies	Timeframe	2025
		Priority	Low
		Pot. Funding Sources	Local
		NFIP compliant?	Helps reduce risk
		Responsible Entity	City
SEVERE WEATHER - FUTURE RESIDENTS/PROPERTY	Other strategies and/or comments:	Estimated Cost	\$0 - \$25 K
		Timeframe	2025
			The answers are the same for Future as Current answers
TORNADO - CURRENT RESIDENTS/PROPERTY	Appropriate engineering controls (such as deflection structures) are designed and installed to mitigate the hazard	Priority	Low
		NFIP compliant?	Helps reduce risk
		Pot. Funding Sources	County
		Responsible Entity	County
		Estimated Cost	\$0 - \$25 K
TORNADO - CURRENT RESIDENTS/PROPERTY	Conduct Outreach Activities to Increase Awareness of Tornado Risk (Specify below in comments)	Timeframe	2025
		Priority	Low
		NFIP compliant?	Helps reduce risk
		Pot. Funding Sources	County
		Responsible Entity	County
TORNADO - CURRENT RESIDENTS/PROPERTY		Estimated Cost	\$0 - \$25 K
		Timeframe	2025

## STANSBURY PARK I.D. MITIGATION STRATEGIES - 2021 TOOELE COUNTY PDMP

Hazard	Strategy	Strategy Informational Categories	Details
TORNADO - CURRENT RESIDENTS/PROPERTY	Develop an tornado codes or regulation prohibiting or limiting structures in known tornado areas	Priority	Low
		NFIP compliant?	Helps reduce risk
		Pot. Funding Sources	County
		Responsible Entity	County
		Estimated Cost	\$0 - \$25 K
		Timeframe	2025
TORNADO - CURRENT RESIDENTS/PROPERTY	Encourage Construction of Safe Rooms (Specify below in comments)	Priority	Low
		NFIP compliant?	Helps reduce risk
		Pot. Funding Sources	County
		Responsible Entity	County
		Estimated Cost	\$0 - \$25 K
		Timeframe	2025
TORNADO - CURRENT RESIDENTS/PROPERTY	Require Wind-Resistant Building Techniques	Priority	Low
		NFIP compliant?	Helps reduce risk
		Pot. Funding Sources	County
		Responsible Entity	County
		Estimated Cost	\$0 - \$25 K
		Timeframe	2025
TORNADO - FUTURE RESIDENTS/PROPERTY	Other strategies and/or comments:		Answers are the same for future as they were for current
WILDFIRE - CURRENT RESIDENTS/PROPERTY	Address density and quantity of development as well emergency access landscaping and water supply	Priority	Medium
WILDFIRE - CURRENT RESIDENTS/PROPERTY		NFIP compliant?	Helps reduce risk
WILDFIRE - CURRENT RESIDENTS/PROPERTY		Pot. Funding Sources	County
WILDFIRE - CURRENT RESIDENTS/PROPERTY		Responsible Entity	County
WILDFIRE - CURRENT RESIDENTS/PROPERTY		Estimated Cost	\$25 K - \$50 K
WILDFIRE - CURRENT RESIDENTS/PROPERTY		Timeframe	2025
WILDFIRE - CURRENT RESIDENTS/PROPERTY	Adopt and Enforce Building Codes and Development Standards	Priority	Low
		NFIP compliant?	Helps reduce risk
		Pot. Funding Sources	County
		Responsible Entity	County
		Estimated Cost	\$25 K - \$50 K

## STANSBURY PARK I.D. MITIGATION STRATEGIES - 2021 TOOELE COUNTY PDMP

Hazard	Strategy	Strategy Informational Categories	Details
		Timeframe	2025
WILDFIRE - CURRENT RESIDENTS/PROPERTY	Develop a community wildfire preparedness plan	Priority	Low
		NFIP compliant?	Helps reduce risk
		Pot. Funding Sources	County
		Responsible Entity	County
		Estimated Cost	\$25 K - \$50 K
		Timeframe	2025
WILDFIRE - CURRENT RESIDENTS/PROPERTY	Develop wildfire and/or Wildland Urban Interface (WUI) codes or regulation prohibiting or limiting structures in known wildfire risk areas	NFIP compliant?	N/A
WILDFIRE - CURRENT RESIDENTS/PROPERTY	Educate Property Owners about Wildfire Mitigation Techniques (List specifics below in comments)	Priority	Low
		NFIP compliant?	Helps reduce risk
		Pot. Funding Sources	County
		Responsible Entity	County
		Estimated Cost	\$25 K - \$50 K
		Timeframe	2025
WILDFIRE - CURRENT RESIDENTS/PROPERTY	Ensure newly constructed government-owned facilities are code compliant for wildfire hazards and promote the use of enhanced wildfire mitigation practices	NFIP compliant?	N/A
WILDFIRE - CURRENT RESIDENTS/PROPERTY	Implement a Fuels Management Program	Priority	Low
		NFIP compliant?	Helps reduce risk
		Pot. Funding Sources	County
		Responsible Entity	County
		Estimated Cost	\$25 K - \$50 K
		Timeframe	2025
WILDFIRE - CURRENT RESIDENTS/PROPERTY	Include considerations of wildfire hazards in land use public safety and other processes	NFIP compliant?	N/A
WILDFIRE - CURRENT RESIDENTS/PROPERTY	Mandate wildfire planning be incorporated into development and land use planning	Priority	Medium
		NFIP compliant?	Helps reduce risk
		Pot. Funding Sources	County
		Responsible Entity	County
		Estimated Cost	\$25 K - \$50 K
		Timeframe	2025
		Priority	Medium
		NFIP compliant?	Helps reduce risk

## STANSBURY PARK I.D. MITIGATION STRATEGIES - 2021 TOOELE COUNTY PDMP

Hazard	Strategy	Strategy Informational Categories	Details
WILDFIRE - CURRENT RESIDENTS/PROPERTY	Mitigate Against Post-Wildfire Flooding via structural projects in drainage areas	Pot. Funding Sources	County
		Responsible Entity	County
		Estimated Cost	\$25 K - \$50 K
		Timeframe	2025
WILDFIRE - CURRENT RESIDENTS/PROPERTY	Participate in Firewise Program	Priority	Low
		NFIP compliant?	Helps reduce risk
		Pot. Funding Sources	County
		Responsible Entity	County
		Estimated Cost	\$25 K - \$50 K
		Timeframe	2025
WILDFIRE - CURRENT RESIDENTS/PROPERTY	Promote conservation of open space or wildland-urban boundary zones to separate developed areas from high-hazard areas	Priority	Low
		NFIP compliant?	Helps reduce risk
		Pot. Funding Sources	County
		Responsible Entity	County
		Estimated Cost	\$25 K - \$50 K
		Timeframe	2025
WILDFIRE - CURRENT RESIDENTS/PROPERTY	Set guidelines for annexation and service extensions in high-risk areas	Priority	Low
		NFIP compliant?	Helps reduce risk
		Pot. Funding Sources	County
		Responsible Entity	County
		Estimated Cost	\$25 K - \$50 K
		Timeframe	2025
WILDFIRE - CURRENT RESIDENTS/PROPERTY	Structural and defensible space requirements	Priority	Low
		NFIP compliant?	Helps reduce risk
		Pot. Funding Sources	County
		Responsible Entity	County
		Estimated Cost	\$25 K - \$50 K
		Timeframe	2025
		Priority	Low
		NFIP compliant?	Helps reduce risk



## STANSBURY PARK I.D. MITIGATION STRATEGIES - 2021 TOOELE COUNTY PDMP

Hazard	Strategy	Strategy Informational Categories	Details
WILDFIRE - CURRENT RESIDENTS/PROPERTY	Use zoning and/or a special wildfire overlay district to designate high-risk areas and specify the conditions for the use and development of specific areas	Pot. Funding Sources	County
		Responsible Entity	County
		Estimated Cost	\$25 K - \$50 K
		Timeframe	2025
WILDFIRE - FUTURE RESIDENTS/PROPERTY	Other strategies and/or comments:		Answers are the same for the future as was submitted for current wildfires