

5.4 TOOELE CITY

5.4.2 Tooele City - Future Development Risk

5.4.3 Tooele City - Hazards

1. Alluvial Fans
2. Avalanche Terrain
3. Debris Flow
4. Earthquake
5. Engineering Problem Soils
6. Erosion
7. Flood
8. Landslide
9. Steep Slope
10. Wildfire
11. Wildlife / Auto

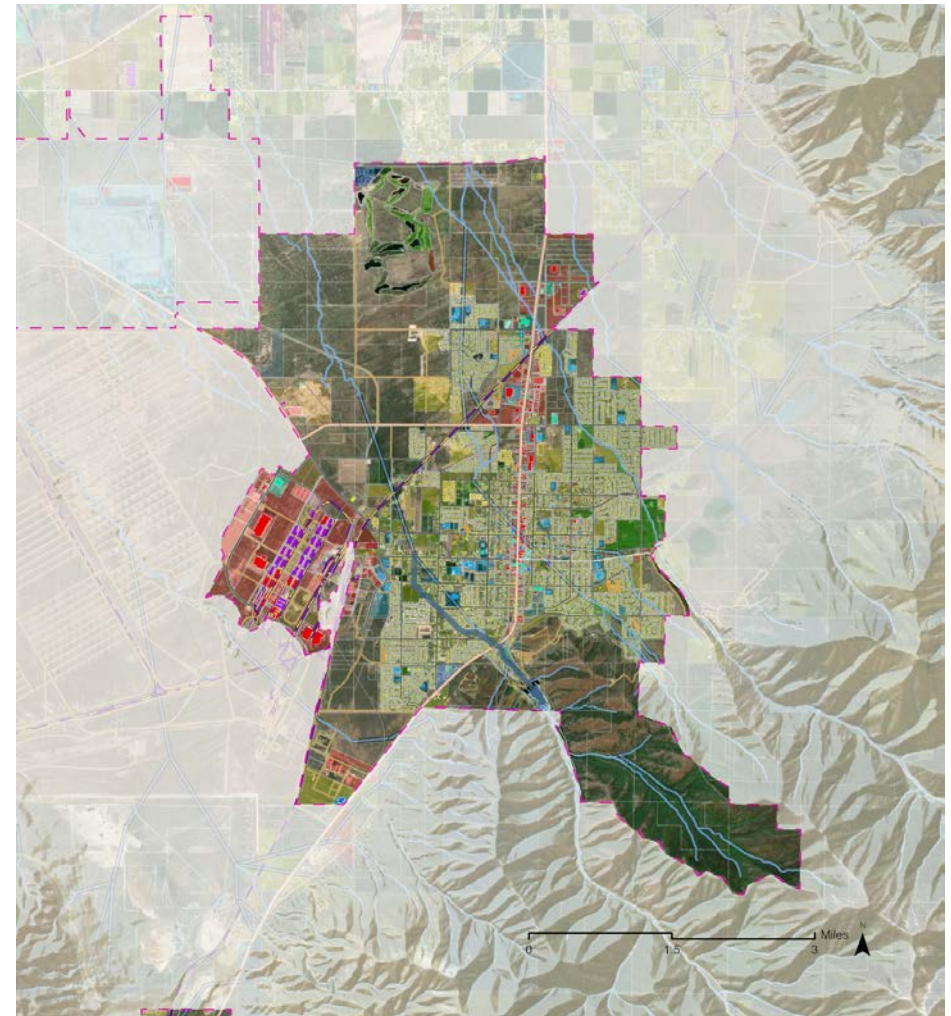
5.4.4 Tooele City - Risk Assessment Results

1. Building Footprints - Structures
2. Point Data - Features
3. Parcel Data
4. Line Data
5. Area Data

5.4.5 Tooele City - Mitigation Strategies

RISK SUMMARY

- Alluvial Fans
- Avalanche Terrain
- Debris Flow
- Earthquake



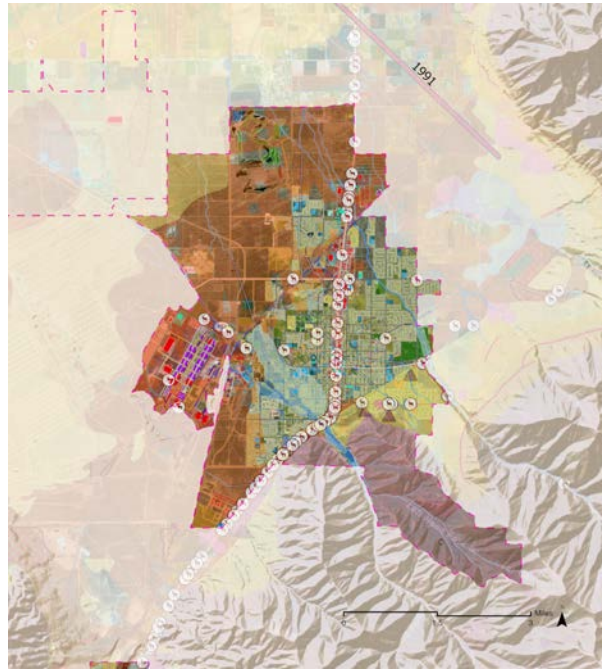
Aerial map of Tooele City.

5.4.2 TOOELE CITY - FUTURE DEVELOPMENT RISK

- Engineering Problem Soils
- Erosion
- Flood
- Landslide
- Steep Slope
- Wildfire
- Wildlife / Auto

FUTURE DEVELOPMENT RISK

New development is expected in four areas of Tooele City. Those are: the areas north of State Road 112 (1000 N.), near 400 West continuing 3300 north are anticipated to increase exponentially over the next several years. The areas of north of 1280 north and east of State Road 36 are anticipated to see significant commercial and residential growth. The southwest section of Tooele City to include the areas of South of Vine Street and West of 1000 West. The last area of anticipated growth is the Southwest Bench which is experiencing a large amount of residential growth which sits in high hazard areas for natural disasters. Potential natural hazards which could put residents and property/infrastructure at risk include dam inundation areas and wildfire.



HAZTYPE / ACRES

Alluvial Fan	58
Avalanche Terrain	619
Debris Flow	2,227
Engineering Problem Soils	4,126
Erosion	3,584
FEMA Flood Zone	234
Flood Dam Inundation	9,261
Flood Soils Purdue	642
Flood USU Valley Bottom	49
Flood Wetland/Riparian	120
Landslide	83
Steep Slope	1,745
Wildfire Hazard Potential	8,384
Wildlife Auto	597

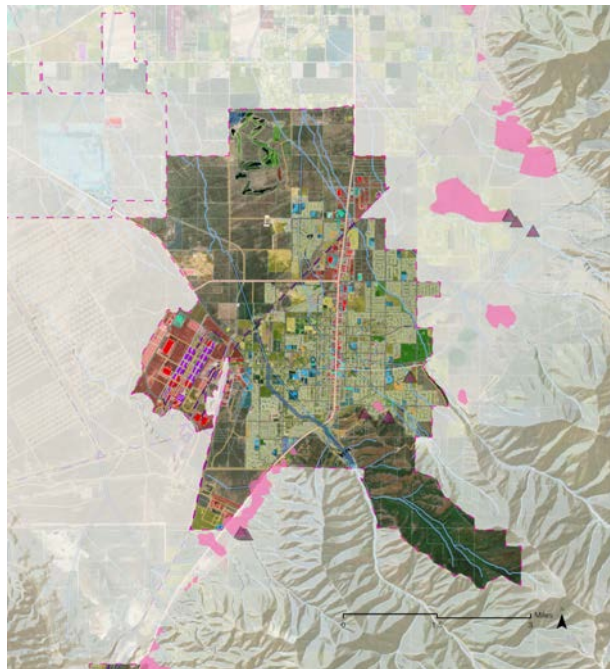
TOOELE CITY - RISK SUMMARY						
Hazard Type	Probability of Occurrence	Population Impact	Property Impact	Economic Impact	Future Development Impact	Overall Risk
Alluvial Fans	Low	Low	MODERATE	MODERATE	HIGH	MODERATE
Avalanche Terrain	HIGH	LOW	LOW	LOW	LOW	LOW
Debris Flow	MODERATE	LOW	HIGH	MODERATE	LOW	LOW
Earthquake	LOW	HIGH	HIGH	HIGH	LOW	MODERATE
Engineering Problem Soils	HIGH	LOW	MODERATE	MODERATE	HIGH	LOW
Erosion	HIGH	LOW	HIGH	HIGH	MODERATE	MODERATE
Flood	HIGH	MODERATE	HIGH	HIGH	MODERATE	HIGH
Landslide	LOW	LOW	HIGH	MODERATE	LOW	LOW
Steep Slope	HIGH	LOW	LOW	LOW	LOW	LOW
Wildfire	HIGH	HIGH	HIGH	HIGH	MODERATE	HIGH
Wildlife / Auto	HIGH	LOW	MODERATE	LOW	LOW	LOW

5.4.3 TOOELE CITY - HAZARDS

ALLUVIAL FANS

58 AC

A few smaller alluvial fans exist in Tooele City, but none will likely impact development too substantially, with the exception of one on Skyline Drive and about Fifth Street. There are also several south of town east of Main Street where homes don't yet exist. Homes built in this area in the future could be at high risk. Potential losses include 1 school, 36 homes, 2 miles of roads, and 52 miles of power lines.



Alluvial Fans

AVALANCHE TERRAIN

619 AC

While no homes currently exist on the steeper slopes east of town, there are some steep, high elevation areas that could be prone to avalanches if the circumstances were right. Potential losses consist mostly of 10 wells, several miles of roads, fairly extensive power lines, agricultural and natural areas, source water protection zones. However, this dataset is not indicative of actual risk; rather it consists of data which could be conducive to avalanches.

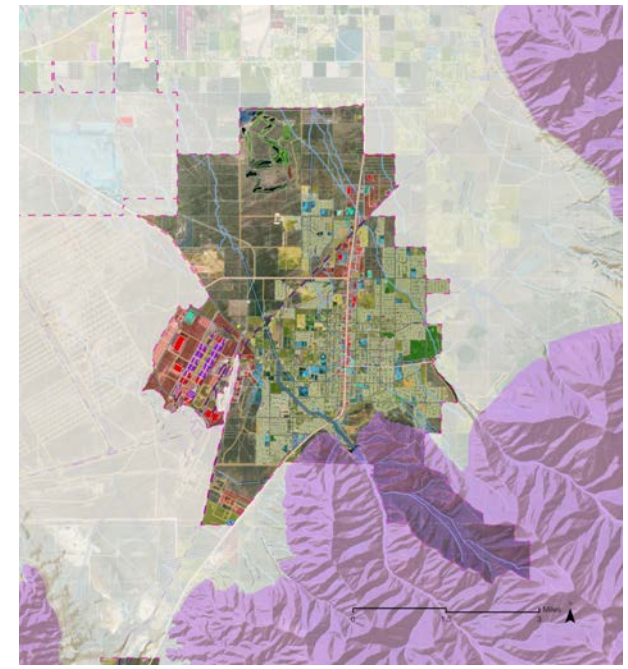


Avalanche Terrain

DEBRIS FLOW

2,227 AC

Many homes east of Main Street and south of Skyline Drive could be at risk to debris flows in the future, particularly if wildfires burn in the mountains and high precipitation events follow. Structures, roads, and other amenities could be substantially damaged if they are located at the bottom of key drainages. Potential losses include 5 community centers, 1 government facility, 8 homes, 115 miles of transmission lines, 5 miles of roads, and many acres of agricultural lands.



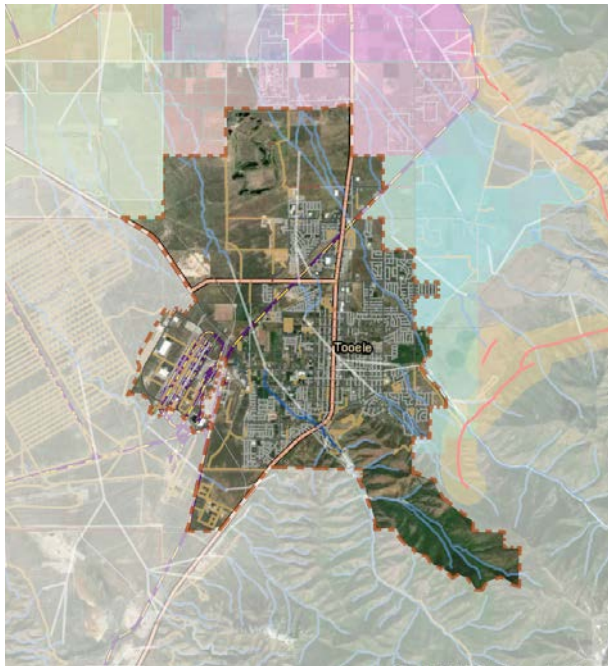
Debris Flow Risk

5.4.3 TOOELE CITY - HAZARDS

EARTHQUAKE

0 AC

While there are no quaternary geological faults technically in Tooele City, Tooele residents and unincorporated areas around the city will still feel the impacts of an earthquake, especially if the epicenter is located east of town. The faults almost touch the municipal boundary on the south end of town.

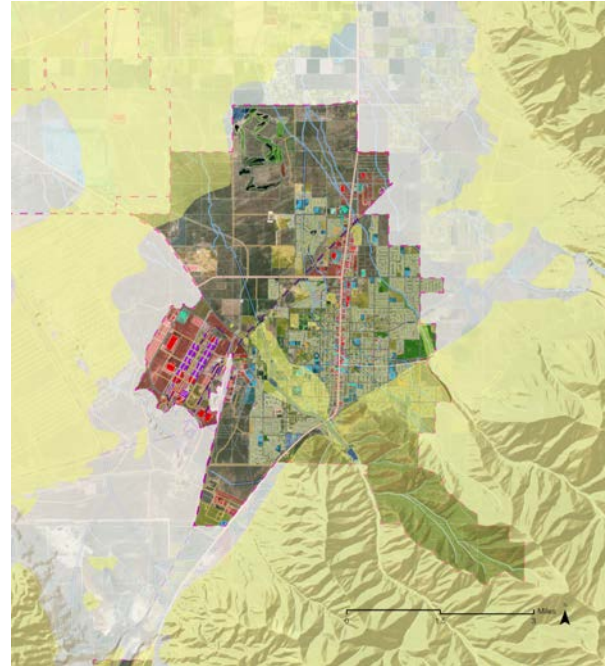


- Quaternary Faults
- 1,500' buffer on Quaternary Faults

ENGINEERING PROBLEM SOILS

4,126 AC

These are located southeast of town and mostly affect the mountains and benches above Main Street and north and south of Sunset Ave, all the way west to the railroad tracks. While not an immediate threat, these soils can cause problems for structures which were not constructed according to modern local building codes. Potential losses include 3 businesses, 18 schools, 7 churches, over 1,800 homes, many miles of roads and power lines, and many acres of agricultural land.

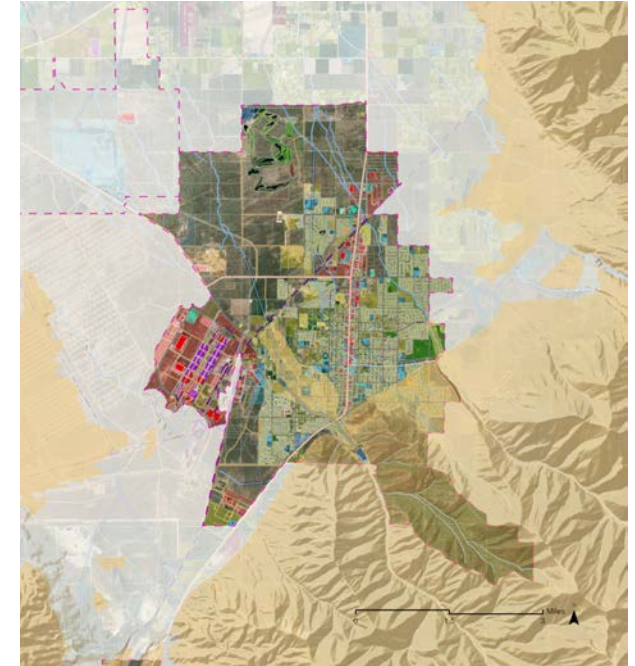


- Problem Soils

EROSION

3,584 AC

These are located southeast of town and mostly affect the mountains and benches above Main Street and north and south of Sunset Ave, all the way west to the railroad tracks. While not an immediate threat, these soils can cause problems for structures which were not constructed according to modern local building codes. Potential losses include 3 businesses, 18 schools, 7 churches, over 1,800 homes, 145 miles of transmission lines, around 35 miles of roads, and many miles of agricultural and natural lands.

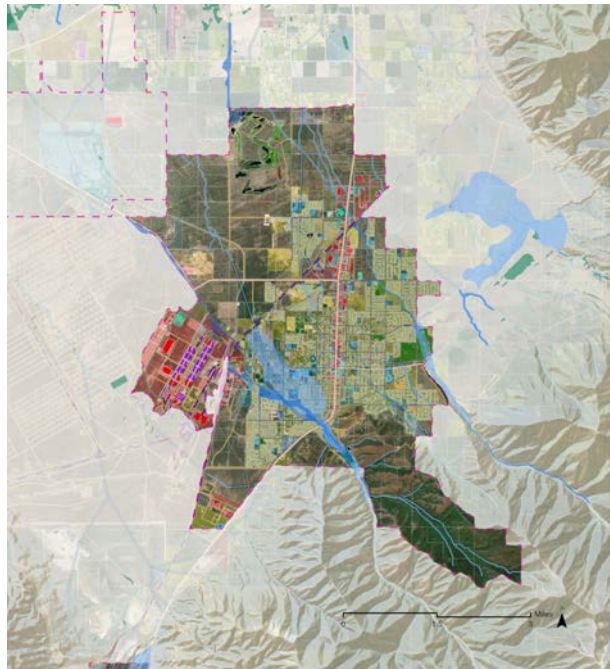


- Erosive Soils (Roads and Trails)

5.4.3 TOOELE CITY - HAZARDS

FLOOD_SOILSPURDUE 642 AC
FLOOD_USU VALLEY BOTTOM 49 AC
FLOOD_WETLAND/RIPARIAN 120 AC

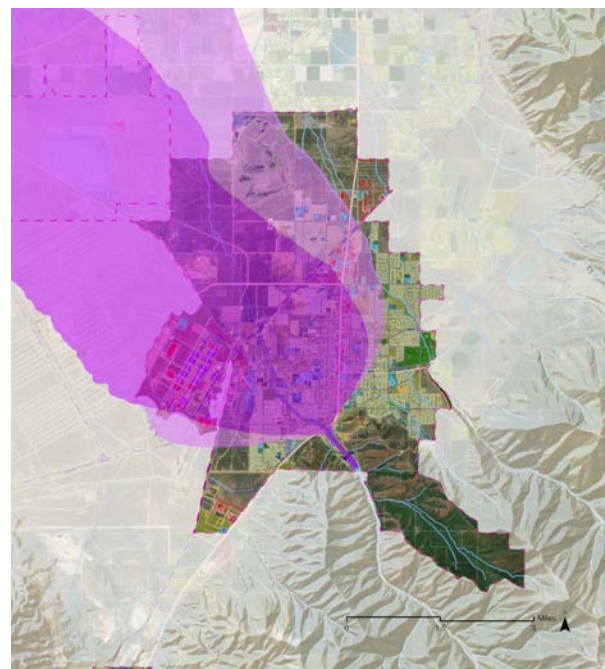
These layers show a much more representative geographic area of potential flood risk along both Settlement and Middle Canyons. These areas, particularly Settlement Canyon, could pose a significant risk to residents from flood events. Potential losses include well over 1,000 homes, 17 schools, 6 churches, many miles of roads and transmission lines, and many acres of agricultural lands.



Flood_Dam Inundation
 Flood_Great Salt Lake Flooding
 Flood_Valley Bottom
 Flood_Soils
 Flood_FEMA 100 year floodplain
 Flood_Riparian/Wetland

FLOOD_DAM INUNDATION
 9,261 AC

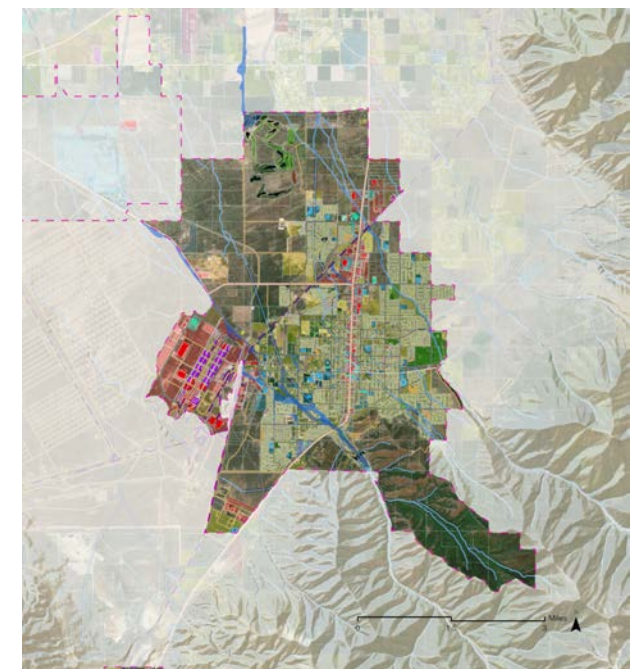
A very large portion of Tooele City could be at risk if Settlement Reservoir Dam is compromised while full. The topography of the city below the dam is fairly flat, so, while this flooding may not be substantially deep further away from the canyon, flooding could cover a very large area. Potential losses include 423 businesses, 6 grocery stores, 34 schools, 1 library, 29 churches, 2 firestations, 25 medical facilities, over 6,000 homes, over 140 miles of roads, and many acres of local farmland.



Dam Inundation Risk

FEMA_FLOOD_ZONE 234 AC

Settlement Canyon and Middle Canyon drainages are shown as FEMA floodplain. However, this may not be representative of all flood risk. If these canyons receive high snow runoff or if there are extreme rain events, coupled with high water tables, these areas could flood beyond the "floodplain." Potential losses include 2 businesses, around 220 homes, 1 school, and around 38 miles of roads.



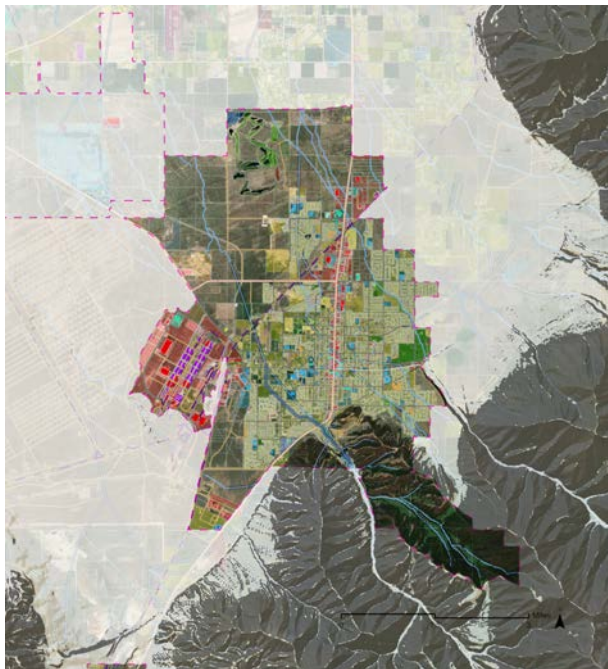
Flood_Dam Inundation
 Flood_Great Salt Lake Flooding
 Flood_Valley Bottom
 Flood_Soils
 Flood_FEMA 100 year floodplain
 Flood_Riparian/Wetland

5.4.3 TOOELE CITY - HAZARDS

STEEP SLOPE

1,745 AC

Steep slopes exist east of town in the mountains north and south of Settlement Canyon, as well as Middle Canyon. Direct risks from steep slopes is minimal, but down hill impacts could be significant in the form of debris flows or landslides given the right conditions. Potential losses include 1 home, 10 wells, 145 miles of transmission lines, 32 miles of natural gas lines, and over 2 miles of local roads.

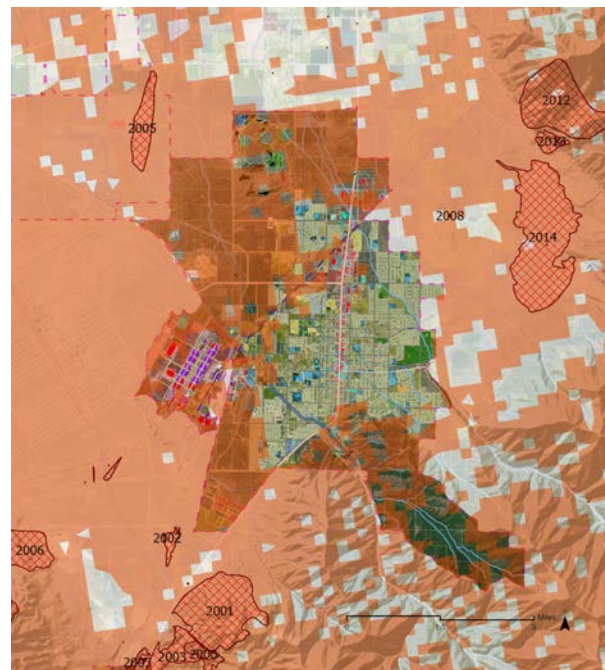


Steep Slopes >30%

WILDFIRE HAZARD POTENTIAL

8,384 AC

Tooele City is flanked on all sides by wildfire hazard areas, mostly in the form of vegetated mountains, benches, and non-irrigated fields. As development creeps higher up the hillsides, more homes could be at risk from future fires. As such, the city should be cognizant of those risks and plan accordingly. Potential losses include 118 businesses, 1 grocery store, 2 schools, 5 churches, 4 emergency services facilities, 147 miles of power lines, and around 33,000 acres of grazing lands.

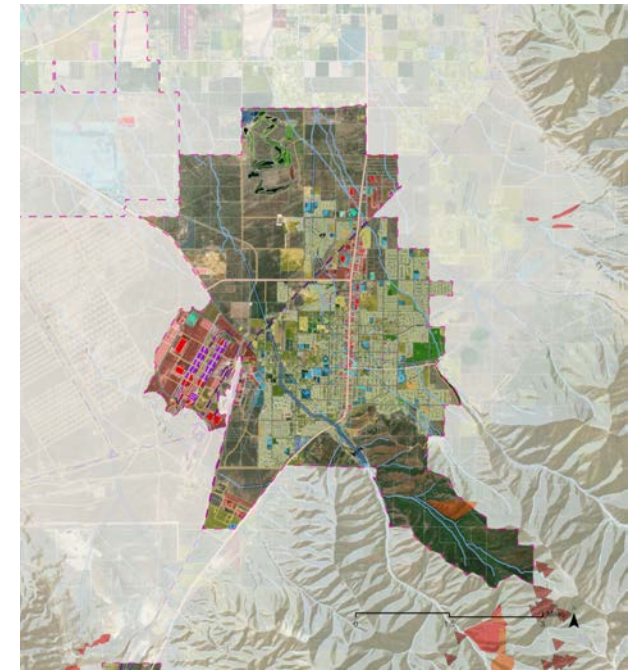


Wildfire Hazard

LANDSLIDE

83 AC

The only mapped landslide risks for Tooele City is located on the north side of Settlement Canyon, east towards the mountains. No significant damage is expected, but the city should be aware that all steep slopes have the potential to slide given the right conditions. Only around 4.5 miles of local trails are at risk, currently.



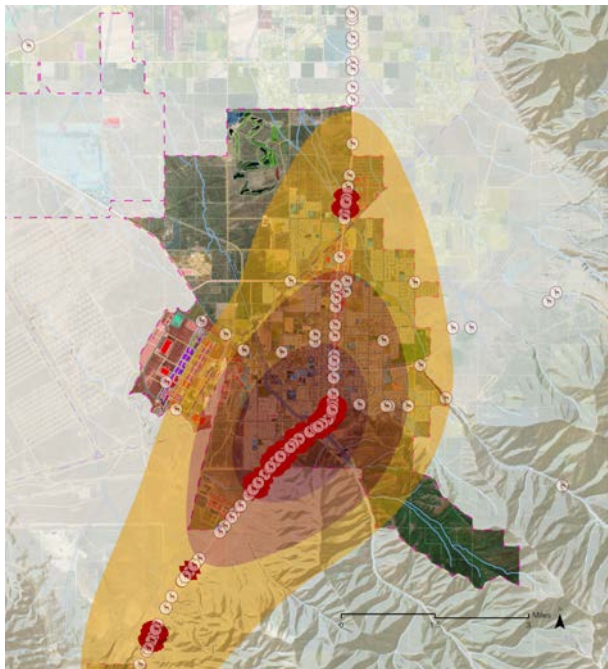
Landslide Hazard

5.4.3 TOOELE CITY - HAZARDS

WILDLIFE AUTO

597 AC

Significant wildlife auto risks exist in the city along Highway 36 between 2000 N and 2400 N, as well as Main Street from about 400 S to Commander Ave south of town. Many accidents have occurred historically in these areas, and, as development continues to expand into more Mule Deer habitat, these accidents will likely increase unless the city can mitigate these habitat impacts. Potential losses consist mostly of potential future injuries or deaths from wildlife/auto impacts in areas shown below.



Wildlife-Auto Conflict Risk Area

5.4.4.1 TOOELE CITY - RISK ASSESMENT RESULTS - STRUCTURES

TOOELE CITY - BUILDING FOOTPRINT - POTENTIAL LOSS TABLE			
Hazard	Category	Type	# of Facilities
Alluvial Fan	Community Resource	Ed_PreK	1
	Residential	Detached Single Family Residential	33
	Residential	Manufactured	2
	Residential	MixedUse	1

TOOELE CITY - BUILDING FOOTPRINT - POTENTIAL LOSS TABLE			
Hazard	Category	Type	# of Structures
Debris Flow	Community Resource	Community Center	5
	Government Facility	LocalGov	1
	Residential	Detached Single Family Residential	8

TOOELE CITY - BUILDING FOOTPRINT - POTENTIAL LOSS TABLE			
Hazard	Category	Type	# of Structures
Engineering Problem Soils	Commercial	Commercial	3
	Community Resource	Community Center	6
	Community Resource	Ed_Kto12	17
	Community Resource	Ed_PreK	1
	Community Resource	PlaceofWorship	7
	Other	Out	2
	Residential	Apartment	1
	Residential	Condominium	34
	Residential	Detached Single Family Residential	1717
	Residential	Duplex	10
	Residential	Fourplex_Triplex	15
	Residential	Manufactured	33
	Residential	Res_MobileHome	11

TOOELE CITY - BUILDING FOOTPRINT - POTENTIAL LOSS TABLE			
Hazard	Category	Type	# of Facilities
Erosion	Commercial	Commercial	3
	Community Resource	Community Center	6
	Community Resource	Ed_Kto12	17
	Community Resource	Ed_PreK	1
	Community Resource	PlaceofWorship	7
	Other	Out	2
	Residential	Apartment	1
	Residential	Condominium	34
	Residential	Detached Single Family Residential	1717
	Residential	Duplex	10
	Residential	Fourplex_Triplex	15
	Residential	Manufactured	33
	Residential	Res_MobileHome	11

TOOELE CITY - BUILDING FOOTPRINT - POTENTIAL LOSS TABLE			
Hazard	Category	Type	# of Facilities
FEMA_100 Year Flood Zone	Commercial	Commercial	2
	Community Resource	Community Center	1
	Community Resource	Ed_PostHi	1
	Industrial	Industrial	2
	Residential	Condominium	7
	Residential	Detached Single Family Residential	156
	Residential	Duplex	1
	Residential	Fourplex_Triplex	2
	Residential	Manufactured	37
	Residential	Res_MobileHome	26
	Transportation Facility	Parking	3

5.4.4.1 TOOELE CITY - RISK ASSESMENT RESULTS - STRUCTURES

TOOELE CITY - BUILDING FOOTPRINT - POTENTIAL LOSS TABLE			
Hazard	Category	Type	# of Facilities
Flood_Soils Purdue	Commercial	Commercial	2
	Community Resource	Ed_Kto12	17
	Community Resource	PlaceofWorship	6
	Residential	Apartment	1
	Residential	Detached Single Family Residential	966
	Residential	Duplex	9
	Residential	Fourplex_Triplex	15
	Residential	Manufactured	33
	Residential	Res_MobileHome	11
Flood_USU Valley Bottom	Community Resource	PlaceofWorship	1
	Residential	Detached Single Family Residential	17
Flood_Wetland/Riparian	Commercial	Commercial	2
	Community Resource	Community Center	1
	Residential	Apartment	1
	Residential	Detached Single Family Residential	22
	Residential	Duplex	2
	Residential	Manufactured	1
	Residential	Res_TwinHome	2

TOOELE CITY - BUILDING FOOTPRINT - POTENTIAL LOSS TABLE			
Hazard	Category	Type	# of Facilities
SteepSlope	Residential	Detached Single Family Residential	1

TOOELE CITY - BUILDING FOOTPRINT - POTENTIAL LOSS TABLE			
Hazard	Category	Type	# of Facilities
Dam Inundation	Commercial	Commercial	423
	Commercial	Grocery_Store	6
	Community Resource	Community Center	15
	Community Resource	Ed_Kto12	29
	Community Resource	Ed_PostHi	5
	Community Resource	Library	1
	Community Resource	PlaceofWorship	29
	Emergency Facility	FireStation	2
	Emergency Facility	MedicalFacility	25
	Emergency Facility	MedicalFacility/Ed_PreK	1
	Emergency Facility	Police	3
	Emergency Facility	Police_MedicalFacility	1
	Government Facility	LocalGov	20
	Government Facility	LocalGov_Commercial	1
	Government Facility	LocalGov_Police	1
	Government Facility	Post_Office	3
	Government Facility	Well	1
	Industrial	Industrial	115
	Other	Out	5
	Recreation Facility	HistoricSite	2
	Residential	Apartment	60
	Residential	Commercial_Residential	18
	Residential	Condominium	112
	Residential	Detached Single Family Residential	5514
	Residential	Duplex	82
	Residential	Fourplex_Triplex	59
	Residential	HistoricSite_Apartment	1
	Residential	Manufactured	185
	Residential	MixedUse	2
	Residential	Res_LowIncome	63
	Residential	Res_MobileHome	634
	Residential	Res_Modular	1
	Residential	Res_TwinHome	76
	Transportation Facility	Parking	10

5.4.4.1 TOOELE CITY - RISK ASSESMENT RESULTS - STRUCTURES

TOOELE CITY - BUILDING FOOTPRINT - POTENTIAL LOSS TABLE			
Hazard	Category	Type	# of Facilities
Wildfire Hazard Potential	Commercial	Commercial	118
	Commercial	Grocery_Store	1
	Community Resource	Community Center	8
	Community Resource	Ed_Kto12	2
	Community Resource	PlaceofWorship	5
	Emergency Facility	FireStation	1
	Emergency Facility	MedicalFacility	2
	Emergency Facility	MedicalFacility/Ed_PreK	1
	Government Facility	Correctional_Facility	3
	Government Facility	LocalGov	7
	Government Facility	Military	9
	Government Facility	Well	1
	Industrial	Industrial	68
	Other	Out	5
	Residential	Apartment	18
	Residential	Condominium	16
	Residential	Detached Single Family Residential	1087
	Residential	Duplex	5
	Residential	Fourplex_Triplex	1
	Residential	Manufactured	28
	Residential	MixedUse	8
	Residential	Res_LowIncome	26
	Residential	Res_MobileHome	185
	Residential	Res_Modular	1
	Transportation Facility	Parking	4

5.4.4.2 TOOELE CITY - RISK ASSESMENT RESULTS - CRITICAL IFACILITIES

TOOELE CITY - CRITICAL FACILITIES - POTENTIAL LOSS TABLE			
Hazard	Category	Type	# of Facilities
Alluvial Fan	Community	Ed_PreK	1

TOOELE CITY - CRITICAL FACILITIES - POTENTIAL LOSS TABLE			
Hazard	Category	Type	# of Facilities
AvalanchTerrain	Water	Well_Log	10

TOOELE CITY - CRITICAL FACILITIES - POTENTIAL LOSS TABLE			
Hazard	Category	Type	# of Facilities
Debris Flow	Natural	SpringSeep	3
	Recreation	CommunityCenter	1
	Water	Well_Log	14

TOOELE CITY - CRITICAL FACILITIES - POTENTIAL LOSS TABLE			
Hazard	Category	Type	# of Facilities
Engineering Problem Soils	Community	Cemetery	1
	Community	ED_K12	2
	Community	Ed_PreK	1
	Community	PlaceofWorship	3
	Emergency		1
	Energy	SubstationRegulator	1
	Natural	SpringSeep	3
	Other	Tower_	3
	Other	Tower_MicrowaveService	4
	Recreation	CommunityCenter	1
	Recreation	Park	1
	Transportation	BusStopsWasatchFront	6
	Water	Dam	2
	Water	Well_Log	199

TOOELE CITY - CRITICAL FACILITIES - POTENTIAL LOSS TABLE			
Hazard	Category	Type	# of Facilities
Erosion	Community	Cemetery	1
	Community	ED_K12	2
	Community	Ed_PreK	1
	Community	PlaceofWorship	3
	Emergency	National Shelter System Facility	1
	Energy	SubstationRegulator	1
	Natural	SpringSeep	3
	Other	Tower_Land Mobile Private Transmission	3
	Other	Tower_Microwave Service	4
	Recreation	CommunityCenter	1
	Recreation	Park	1
	Transportation	BusStopsWasatchFront	6
Water	Dam		2
	Well_Log		193

TOOELE CITY - CRITICAL FACILITIES - POTENTIAL LOSS TABLE			
Hazard	Category	Type	# of Facilities
FEMA_100 Year Flood Zone	Community	Ed_PostHigh	1
	Transportation	Bus Stops Wasatch Front	3
	Water	Well_Log	44

5.4.4.2 TOOELE CITY - RISK ASSESMENT RESULTS - CRITICAL IFACILITIES

TOOELE CITY - CRITICAL FACILITIES - POTENTIAL LOSS TABLE			
Hazard	Category	Type	# of Facilities
Flood_Soils Purdue	Community	ED_K12	2
	Community	PlaceofWorship	2
	Emergency	NationalShelterSystemFacility	1
	Natural	SpringSeep	1
	Other	Tower_	2
	Transportation	BusStopsWasatchFront	6
	Water	Dam	1
	Water	Well_Log	91
	Water	Well_Log	44
Flood_USU Valley Bottom	Natural	SpringSeep	2
	Transportation	Bridge_Rail	1
	Transportation	BusStopsWasatchFront	1
	Water	Dam	1
	Water	Well_Log	1

TOOELE CITY - CRITICAL FACILITIES - POTENTIAL LOSS TABLE			
Hazard	Category	Type	# of Facilities
SteepSlope	Water	Well_Log	10

TOOELE CITY - CRITICAL FACILITIES - POTENTIAL LOSS TABLE			
Hazard	Category	Type	# of Facilities
Dam Inundation	Community	ED_K12	10
	Community	Ed_PostHigh	6
	Community	Ed_PreK	1
	Community	GroceryStore	9
	Community	Library	1
	Community	PlaceofWorship	23
	Emergency	EmergencyMedicalServices	1
	Emergency	FireStation	2
	Emergency	HealthCareFacility	54
	Emergency	LawEnforcement	3
	Emergency	NationalShelterSystemFacility	8
	Emergency	PublicSafetyAnsweringPoint	1
	Energy	FuelStation_AlternativeEnergy	1
	Energy	FuelStation_Gas	9
	Energy	PetroleumTerminal	1
	Energy	SubstationRegulator	1
	Government	LocalGovFacility	11
	Government	PostOffice	1
	Other	Tower_AntennaStructureRegistrate	2
	Other	Tower_FMTtransmission	1
	Other	Tower_Land Mobile Private Transmission	29
	Other	Tower_MicrowaveService	13
	Other	WaistewaterFacility	2
	Recreation	Campground	1
	Recreation	CommunityCenter	4
	Recreation	GolfCourse	1
	Recreation	HistoricSites	13
	Recreation	Museum	1
	Recreation	Park	10
	Transportation	Bridge_Rail	1
	Transportation	Bridge_Road	2
	Transportation	BusStopsWasatchFront	52
	Water	Dam	1
	Water	Well_Log	327
	Water	Well_NHD	2
	Water	Well_UndergroudInjectionControl	3

5.4.4.2 TOOELE CITY - RISK ASSESMENT RESULTS - CRITICAL IFACILITIES

TOOELE CITY - CRITICAL FACILITIES - POTENTIAL LOSS TABLE			
Hazard	Category	Type	# of Facilities
Wildfire Hazard Potential	Community	ED_K12	2
	Community	Ed_PostHigh	1
	Community	GroceryStore	1
	Community	PlaceofWorship	3
	Emergency	FireStation	1
	Emergency	HealthCareFacility	10
	Emergency	LawEnforcement	1
	Energy	FuelStation_Gas	1
	Energy	SubstationRegulator	1
	Government	CorrectionalFacility	1
	Natural	SpringSeep	2
	Other	Tower_Land Mobile Private Transmission	4
	Other	Tower_MicrowaveService	2
	Other	WaistewaterFacility	1
	Recreation	Campground	1
	Recreation	CommunityCenter	1
	Recreation	GolfCourse	1
	Recreation	Park	2
	Transportation	Bridge_Rail	1
	Transportation	Bridge_Road	1
	Transportation	BusStopsWasatchFront	2
	Water	Dam	1
	Water	Well_Log	227
	Water	Well_NHD	2
	Water	Well_UndergroudInjectionControl	1

5.4.4.3 TOOELE CITY - RISK ASSESMENT RESULTS - PARCEL DATA

TOOELE CITY - PARCELS - POTENTIAL LOSS TABLE					
Hazard	Category	Type	# of Parcels	# of Acres	# of Total Market Value
AlluvialFan	Residential	Detached Single Family Residential	23	6.37	\$6,194,568

TOOELE CITY - PARCELS - POTENTIAL LOSS TABLE					
Hazard	Category	Type	# of Parcels	# of Acres	# of Total Market Value
AvalanchTerrain	None	None	1	60.00	\$30,000

TOOELE CITY - PARCELS - POTENTIAL LOSS TABLE					
Hazard	Category	Type	# of Parcels	# of Acres	# of Total Market Value
DebrisFlow	None	None	38	3,143.39	\$677,200
DebrisFlow	Residential	Residential	13	13.97	\$2,618,480
DebrisFlow	SITLA	SITLA	1	-	\$-

TOOELE CITY - PARCELS - POTENTIAL LOSS TABLE					
Hazard	Category	Type	# of Parcels	# of Acres	# of Total Market Value
DwellingsWithBasements	Commercial	Commercial	1	2.79	\$28,028
DwellingsWithBasements	Community_Resources	Ed_Kto12	11	34.37	\$-
DwellingsWithBasements	Community_Resources	PlaceofWorship	3	9.62	\$45,688
DwellingsWithBasements	Energy	None	1	-	\$-
DwellingsWithBasements	None	None	140	4,535.62	\$7,061,134
DwellingsWithBasements	Recreation	Open_Space	1	11.31	\$-
DwellingsWithBasements	Residential	Res_Munufacture_Mobile_Hookups	28	7.95	\$2,312,268
DwellingsWithBasements	Residential	Residential	1,604	605.16	\$367,403,762
DwellingsWithBasements	Residential	Residential_MultiFamily	115	4.28	\$22,342,893
DwellingsWithBasements	SITLA	SITLA	1	-	\$-

5.4.4.3 TOOELE CITY - RISK ASSESMENT RESULTS - PARCEL DATA

TOOELE CITY - PARCELS - POTENTIAL LOSS TABLE					
Hazard	Category	Type	# of Parcels	# of Acres	# of Total Market Value
Erosion_OffRoadTrail	None	None	26	2,595.83	\$587,241
Erosion_OffRoadTrail	Residential	Residential	27	14.29	\$6,040,056
Erosion_OffRoadTrail	SITLA	SITLA	1	-	\$-
Erosion_RoadTrail	Commercial	Commercial	1	2.79	\$28,028
Erosion_RoadTrail	Community_Resources	Ed_Kto12	11	34.37	\$-
Erosion_RoadTrail	Community_Resources	PlaceofWorship	3	9.62	\$45,688
Erosion_RoadTrail	Energy	None	1	-	\$-
Erosion_RoadTrail	None	None	133	3,763.63	\$3,118,486
Erosion_RoadTrail	Recreation	Open_Space	1	11.31	\$-
Erosion_RoadTrail	Residential	Res_Munufacture_Mobile_Hookups	28	7.95	\$2,312,268
Erosion_RoadTrail	Residential	Residential	1,604	605.16	\$367,403,762
Erosion_RoadTrail	Residential	Residential_MultiFamily	115	4.28	\$22,342,893
Erosion_RoadTrail	SITLA	SITLA	1	-	\$-

TOOELE CITY - PARCELS - POTENTIAL LOSS TABLE					
Hazard	Category	Type	# of Parcels	# of Acres	# of Total Market Value
FEMA_FloodZone	Commercial	Commercial	1	0.08	\$-
FEMA_FloodZone	None	None	9	159.91	\$315,520
FEMA_FloodZone	Residential	Res_Munufacture_Mobile_Hookups	23	6.48	\$1,972,341
FEMA_FloodZone	Residential	Residential	116	23.64	\$19,390,329
FEMA_FloodZone	Residential	Residential_MultiFamily	26	0.48	\$3,282,974

5.4.4.3 TOOELE CITY - RISK ASSESMENT RESULTS - PARCEL DATA

TOOELE CITY - PARCELS - POTENTIAL LOSS TABLE					
Hazard	Category	Type	# of Parcels	# of Acres	# of Total Market Value
Flood_SoilsPurdue	Community_Resources	Ed_Kto12	11	34.37	\$-
Flood_SoilsPurdue	Community_Resources	PlaceofWorship	2	6.52	\$45,688
Flood_SoilsPurdue	None	None	41	55.69	\$514,080
Flood_SoilsPurdue	Residential	Res_Munufacture_Mobile_Hookups	28	7.95	\$2,312,268
Flood_SoilsPurdue	Residential	Residential	773	270.72	\$139,686,527
Flood_SoilsPurdue	Residential	Residential_MultiFamily	16	4.10	\$3,240,014
Flood_USUValleyBottom	None	None	2	5.52	\$500
Flood_USUValleyBottom	Residential	Residential	20	7.22	\$4,428,076
Flood_Wetland/Riparian	None	None	2	9.09	\$4,750
TOOELE CITY - PARCELS - POTENTIAL LOSS TABLE					
Hazard	Category	Type	# of Parcels	# of Acres	# of Total Market Value
Flood_DamInundation	Commercial	Commercial	401	1,133.18	\$274,485,549
Flood_DamInundation	Community_Resources	Comm_Center	2	11.43	\$299,150
Flood_DamInundation	Community_Resources	Ed_Kto12	31	106.16	\$7,105,549
Flood_DamInundation	Community_Resources	Ed_Kto12/Comm_Center	1	8.32	\$-
Flood_DamInundation	Community_Resources	Ed_PostHigh	9	40.30	\$873,397
Flood_DamInundation	Community_Resources	Grocery_Store	6	33.99	\$26,355,210
Flood_DamInundation	Community_Resources	Library	1	1.90	\$-
Flood_DamInundation	Community_Resources	Museum	1	0.23	\$500
Flood_DamInundation	Community_Resources	PlaceofWorship	21	38.35	\$1,279,422
Flood_DamInundation	EmergencyServices	Fire_Station	3	21.01	\$10,044,039
Flood_DamInundation	EmergencyServices	Health_Care	33	24.83	\$29,156,979
Flood_DamInundation	EmergencyServices	Health_Care/Ed_PreK	1	1.10	\$1,685,118
Flood_DamInundation	EmergencyServices	Health_Care/Emergency_Med	1	0.22	\$-
Flood_DamInundation	EmergencyServices	Police Department	8	2.95	\$419,463
Flood_DamInundation	EmergencyServices	Police Department/Health_Care	1	2.45	\$3,400,068
Flood_DamInundation	EmergencyServices	Police Department/Local_Gov_Fac	1	1.67	\$-

5.4.4.3 TOOELE CITY - RISK ASSESMENT RESULTS - PARCEL DATA

Flood_DamInundation	Energy	Manufacture_Industry	1	20.64	\$1,894,172
Flood_DamInundation	LocalGovernment	Emergency_Med/Local_Gov_Fac	1	0.86	\$-
Flood_DamInundation	LocalGovernment	Local_Gov_Fac	19	5.23	\$219,548
Flood_DamInundation	LocalGovernment	Local_Gov_Fac/ PlaceofWorship	1	0.20	\$470,089
Flood_DamInundation	LocalGovernment	Post_Office	2	0.58	\$-
Flood_DamInundation	"LocalGovernment				
"	None	1	-	\$-	
Flood_DamInundation	None	None	403	5,943.23	\$50,577,419
Flood_DamInundation	Other	Manufacture_Industry	36	408.40	\$29,027,915
Flood_DamInundation	Recreation	Open_Space	24	105.51	\$194,690
Flood_DamInundation	Residential	Res_Munufacture_Mobile_Hookups	202	160.57	\$31,753,866
Flood_DamInundation	Residential	Residential	5,234	1,690.22	\$914,956,843
Flood_DamInundation	Residential	Residential_Commercial	19	22.96	\$5,296,639
Flood_DamInundation	Residential	Residential_MultiFamily	671	116.58	\$139,422,219
Flood_DamInundation	SITLA	SITLA	1	-	\$-

TOOELE CITY - PARCELS - POTENTIAL LOSS TABLE

Hazard	Category	Type	# of Parcels	# of Acres	# of Total Market Value
SteepSlope	None	None	3	287.80	\$143,900

5.4.4.3 TOOELE CITY - RISK ASSESMENT RESULTS - PARCEL DATA

TOOELE CITY - PARCELS - POTENTIAL LOSS TABLE					
Hazard	Category	Type	# of Parcels	# of Acres	# of Total Market Value
Wildfire	Commercial	Commercial	45	185.59	\$25,903,541
Wildfire	Community_Resources	PlaceofWorship	1	3.10	\$-
Wildfire	EmergencyServices	Correctional_Fac	1	0.53	\$735,000
Wildfire	EmergencyServices	Health_Care	2	5.84	\$5,608,140
Wildfire	EmergencyServices	Police Department/ Correctional_Fac	1	10.51	\$-
Wildfire	None	None	204	4,789.33	\$45,495,690
Wildfire	Other	Manufacture_Industry	8	186.48	\$7,677,229
Wildfire	Residential	Res_Munufacture_Mobile_ Hookups	18	6.29	\$2,746,276
Wildfire	Residential	Residential	1,099	466.53	\$223,927,267
Wildfire	Residential	Residential_Commercial	2	99.90	\$3,356,108
Wildfire	Residential	Residential_MultiFamily	92	7.90	\$15,852,921
Wildfire	SITLA	SITLA	1	-	\$-

TOOELE CITY - PARCELS - POTENTIAL LOSS TABLE					
Hazard	Category	Type	# of Parcels	# of Acres	# of Total Market Value
WildlifeAuto	Commercial	Commercial	21	28.58	\$13,184,149
WildlifeAuto	Community_Resources	Cemetery	2	9.25	\$96,075
WildlifeAuto	Community_Resources	Grocery_Store	2	2.19	\$2,541,719
WildlifeAuto	Community_Resources	PlaceofWorship	4	6.46	\$85,000
WildlifeAuto	EmergencyServices	Fire_Station/Emergency_ Med	1	1.77	\$-
WildlifeAuto	EmergencyServices	Health_Care	3	4.35	\$3,340,624
WildlifeAuto	LocalGovernment	Local_Gov_Fac	5	17.21	\$500
WildlifeAuto	None	None	32	20.24	\$111,900
WildlifeAuto	Residential	Res_Munufacture_Mobile_ Hookups	8	31.96	\$1,362,524
WildlifeAuto	Residential	Residential	411	127.12	\$83,056,471
WildlifeAuto	Residential	Residential_Commercial	4	2.42	\$1,059,057
WildlifeAuto	Residential	Residential_MultiFamily	2	1.47	\$366,445

5.1.4.4 TOOELE CITY | RISK ASSESMENT RESULTS | LINE DATA

TOOELE CITY - RISK ASSESMENT - CRITICAL INFRASTRUCTURE LINE DATA				
HAZARD	INFRASTRUCTURE CATEGORY	INFRASTRUCTURE TYPE	# OF SEGMENTS	SUM SEGMENT LENGTH (MILES)
AlluvialFan	Energy	ElectricPowerTransmissionLine	6	52.1
AlluvialFan	Transportation	Road_C	11	0.8
AlluvialFan	Water	Connector	3	1.1
AvalanchTerrain	Energy	ElectricPowerTransmissionLine	5	93.6
AvalanchTerrain	Energy	Pipeline_NaturalGas	1	17.5
AvalanchTerrain	Natural	StreamRiver_Ephemeral	6	4.0
AvalanchTerrain	Recreation	Trails	1	4.5
AvalanchTerrain	Transportation	Road	3	1.5
AvalanchTerrain	Transportation	Road_C	2	0.8
AvalanchTerrain	Transportation	Road_D	1	0.4
DebrisFlow	Energy	ElectricPowerTransmissionLine	7	114.9
DebrisFlow	Energy	Pipeline_NaturalGas	1	17.5
DebrisFlow	Natural	StreamRiver_Ephemeral	15	9.9
DebrisFlow	Recreation	Trails	1	4.5
DebrisFlow	Transportation	Road	5	1.3
DebrisFlow	Transportation	Road_B	5	1.9
DebrisFlow	Transportation	Road_C	6	1.2
DebrisFlow	Transportation	Road_D	4	0.3
DebrisFlow	Water	Canal_ArtificialPath	3	0.3
DebrisFlow	Water	Connector	7	0.8
DebrisFlow	Water	Dam	1	0.2

5.1.4.4 TOOELE CITY I RISK ASSESMENT RESULTS I LINE DATA

TOOELE CITY - RISK ASSESMENT - CRITICAL INFRASTRUCTURE LINE DATA

HAZARD	INFRASTRUCTURE CATEGORY	INFRASTRUCTURE TYPE	# OF SEGMENTS	SUM SEGMENT LENGTH (MILES)
DwellingsWithBasements	Energy	ElectricPowerTransmissionLine	10	144.9
DwellingsWithBasements	Energy	Pipeline_NaturalGas	3	38.5
DwellingsWithBasements	Energy	Pipeline_Petro	1	58.9
DwellingsWithBasements	Natural	StreamRiver_Ephemeral	25	25.9
DwellingsWithBasements	Natural	StreamRiver_Perennial	3	2.0
DwellingsWithBasements	Recreation	Trails	1	4.5
DwellingsWithBasements	Transportation	Road	37	4.5
DwellingsWithBasements	Transportation	Road_A	5	15.3
DwellingsWithBasements	Transportation	Road_B	9	2.6
DwellingsWithBasements	Transportation	Road_C	327	26.7
DwellingsWithBasements	Transportation	Road_D	24	2.6
DwellingsWithBasements	Transportation	Road_X	1	0.1
DwellingsWithBasements	Water	Canal_ArtificialPath	3	0.2
DwellingsWithBasements	Water	Connector	9	3.4
DwellingsWithBasements	Water	Dam	1	0.2
Erosion_RoadTrail	Energy	ElectricPowerTransmissionLine	10	144.9
Erosion_RoadTrail	Energy	Pipeline_NaturalGas	3	38.5
Erosion_RoadTrail	Energy	Pipeline_Petro	1	58.9
Erosion_RoadTrail	Natural	StreamRiver_Ephemeral	22	18.7
Erosion_RoadTrail	Natural	StreamRiver_Perennial	3	2.0

5.1.4.4 TOOELE CITY | RISK ASSESMENT RESULTS | LINE DATA

TOOELE CITY - RISK ASSESMENT - CRITICAL INFRASTRUCTURE LINE DATA				
HAZARD	INFRASTRUCTURE CATEGORY	INFRASTRUCTURE TYPE	# OF SEGMENTS	SUM SEGMENT LENGTH (MILES)
Erosion_RoadTrail	Recreation	Trails	1	4.5
Erosion_RoadTrail	Transportation	Road	37	4.5
Erosion_RoadTrail	Transportation	Road_A	2	0.2
Erosion_RoadTrail	Transportation	Road_B	9	2.6
Erosion_RoadTrail	Transportation	Road_C	327	26.7
Erosion_RoadTrail	Transportation	Road_D	23	2.2
Erosion_RoadTrail	Transportation	Road_X	1	0.1
Erosion_RoadTrail	Water	Canal_ArtificialPath	3	0.2
Erosion_RoadTrail	Water	Connector	9	3.4
Erosion_RoadTrail	Water	Dam	1	0.2
FEMA_FloodZone	Energy	ElectricPowerTransmissionLine	8	80.3
FEMA_FloodZone	Energy	Pipeline_NaturalGas	3	38.9
FEMA_FloodZone	Energy	Pipeline_Petro	1	58.9
FEMA_FloodZone	Natural	StreamRiver_Ephemeral	14	15.1
FEMA_FloodZone	Natural	StreamRiver_Perennial	3	2.0
FEMA_FloodZone	Transportation	Road	15	3.0
FEMA_FloodZone	Transportation	Road_A	3	15.1
FEMA_FloodZone	Transportation	Road_B	1	1.3
FEMA_FloodZone	Transportation	Road_C	123	13.9
FEMA_FloodZone	Transportation	Road_X	1	0.3

5.1.4.4 TOOELE CITY I RISK ASSESMENT RESULTS I LINE DATA

TOOELE CITY - RISK ASSESMENT - CRITICAL INFRASTRUCTURE LINE DATA				
HAZARD	INFRASTRUCTURE CATEGORY	INFRASTRUCTURE TYPE	# OF SEGMENTS	SUM SEGMENT LENGTH (MILES)
FEMA_FloodZone	Water	Connector	5	4.4
Flood_DamInundation	Energy	ElectricPowerTransmissionLine	6	60.0
Flood_DamInundation	Energy	Pipeline_NaturalGas	2	23.9
Flood_DamInundation	Energy	Pipeline_Petro	1	58.9
Flood_DamInundation	Natural	StreamRiver_Ephemeral	17	18.2
Flood_DamInundation	Natural	StreamRiver_Perennial	3	2.0
Flood_DamInundation	Transportation	Road	306	33.2
Flood_DamInundation	Transportation	Road_A	34	21.4
Flood_DamInundation	Transportation	Road_B	1	1.3
Flood_DamInundation	Transportation	Road_C	1057	93.2
Flood_DamInundation	Transportation	Road_D	2	0.5
Flood_DamInundation	Transportation	Road_P	1	0.0
Flood_DamInundation	Transportation	Road_X	2	0.4
Flood_DamInundation	Water	Canal_ArtificialPath	4	0.3
Flood_DamInundation	Water	Connector	12	8.3
Flood_DamInundation	Water	Dam	1	0.2
Flood_SoilsPurdue	Energy	ElectricPowerTransmissionLine	8	126.6
Flood_SoilsPurdue	Energy	Pipeline_NaturalGas	2	32.5
Flood_SoilsPurdue	Energy	Pipeline_Petro	1	58.9
Flood_SoilsPurdue	Natural	StreamRiver_Ephemeral	4	3.4

5.1.4.4 TOOELE CITY | RISK ASSESMENT RESULTS | LINE DATA

TOOELE CITY - RISK ASSESMENT - CRITICAL INFRASTRUCTURE LINE DATA				
HAZARD	INFRASTRUCTURE CATEGORY	INFRASTRUCTURE TYPE	# OF SEGMENTS	SUM SEGMENT LENGTH (MILES)
Flood_SoilsPurdue	Natural	StreamRiver_Perennial	3	2.0
Flood_SoilsPurdue	Transportation	Road	9	1.0
Flood_SoilsPurdue	Transportation	Road_A	2	0.2
Flood_SoilsPurdue	Transportation	Road_B	2	0.6
Flood_SoilsPurdue	Transportation	Road_C	137	12.6
Flood_SoilsPurdue	Transportation	Road_D	2	0.2
Flood_SoilsPurdue	Transportation	Road_X	1	0.1
Flood_SoilsPurdue	Water	Canal_ArtificialPath	3	0.2
Flood_SoilsPurdue	Water	Connector	6	3.1
Flood_SoilsPurdue	Water	Dam	1	0.2
Flood_USUValleyBottom	Energy	ElectricPowerTransmissionLine	4	45.3
Flood_USUValleyBottom	Energy	Pipeline_NaturalGas	1	17.5
Flood_USUValleyBottom	Natural	StreamRiver_Perennial	2	0.7
Flood_USUValleyBottom	Transportation	Road	4	0.4
Flood_USUValleyBottom	Transportation	Road_A	1	0.1
Flood_USUValleyBottom	Transportation	Road_C	9	1.3
Flood_USUValleyBottom	Transportation	Road_D	1	0.2
Flood_USUValleyBottom	Water	Canal_ArtificialPath	3	0.3
Flood_USUValleyBottom	Water	Connector	3	0.3
Flood_Wetland_Riparian	Energy	ElectricPowerTransmissionLine	8	80.3
Flood_Wetland_Riparian	Energy	Pipeline_NaturalGas	3	38.9

5.1.4.4 TOOELE CITY I RISK ASSESMENT RESULTS I LINE DATA

TOOELE CITY - RISK ASSESMENT - CRITICAL INFRASTRUCTURE LINE DATA				
HAZARD	INFRASTRUCTURE CATEGORY	INFRASTRUCTURE TYPE	# OF SEGMENTS	SUM SEGMENT LENGTH (MILES)
Flood_Wetland_Riparian	Energy	Pipeline_Petro	1	58.9
Flood_Wetland_Riparian	Natural	StreamRiver_Ephemeral	39	38.5
Flood_Wetland_Riparian	Natural	StreamRiver_Perennial	3	2.0
Flood_Wetland_Riparian	Recreation	Trails	1	4.5
Flood_Wetland_Riparian	Transportation	Road	11	3.1
Flood_Wetland_Riparian	Transportation	Road_A	7	15.8
Flood_Wetland_Riparian	Transportation	Road_B	1	0.4
Flood_Wetland_Riparian	Transportation	Road_C	105	13.2
Flood_Wetland_Riparian	Water	Canal_ArtificialPath	4	0.3
Flood_Wetland_Riparian	Water	Connector	21	12.4
Flood_Wetland_Riparian	Water	Dam	1	0.2
Landslide	Recreation	Trails	1	4.5
RMRS_WildFireHP_2020	Energy	ElectricPowerTransmissionLine	11	146.5
RMRS_WildFireHP_2020	Energy	Pipeline_NaturalGas	4	44.9
RMRS_WildFireHP_2020	Energy	Pipeline_Petro	1	58.9
RMRS_WildFireHP_2020	Natural	StreamRiver_Ephemeral	35	36.8
RMRS_WildFireHP_2020	Natural	StreamRiver_Perennial	2	0.7
RMRS_WildFireHP_2020	Recreation	Trails	1	4.5
RMRS_WildFireHP_2020	Transportation	Road	174	27.1
RMRS_WildFireHP_2020	Transportation	Road_A	14	19.6

5.1.4.4 TOOELE CITY | RISK ASSESMENT RESULTS | LINE DATA

TOOELE CITY - RISK ASSESMENT - CRITICAL INFRASTRUCTURE LINE DATA				
HAZARD	INFRASTRUCTURE CATEGORY	INFRASTRUCTURE TYPE	# OF SEGMENTS	SUM SEGMENT LENGTH (MILES)
RMRS_WildFireHP_2020	Transportation	Road_B	9	3.7
RMRS_WildFireHP_2020	Transportation	Road_C	398	40.3
RMRS_WildFireHP_2020	Transportation	Road_D	9	1.6
RMRS_WildFireHP_2020	Water	Canal_ArtificialPath	3	0.3
RMRS_WildFireHP_2020	Water	Connector	17	9.0
RMRS_WildFireHP_2020	Water	Dam	1	0.2
SteepSlope	Energy	ElectricPowerTransmissionLine	10	144.9
SteepSlope	Energy	Pipeline_NaturalGas	2	32.5
SteepSlope	Natural	StreamRiver_Ephemeral	13	10.4
SteepSlope	Recreation	Trails	1	4.5
SteepSlope	Transportation	Road	5	1.8
SteepSlope	Transportation	Road_B	1	0.4
SteepSlope	Transportation	Road_C	3	1.1
SteepSlope	Transportation	Road_D	5	0.9
SteepSlope	Water	Canal_ArtificialPath	1	0.1
SteepSlope	Water	Connector	2	0.2
SteepSlope	Water	Dam	1	0.2
WildlifeAuto	Energy	ElectricPowerTransmissionLine	6	71.6
WildlifeAuto	Energy	Pipeline_NaturalGas	2	23.9
WildlifeAuto	Energy	Pipeline_Petro	1	58.9

5.1.4.4 TOOELE CITY I RISK ASSESMENT RESULTS I LINE DATA

TOOELE CITY - RISK ASSESMENT - CRITICAL INFRASTRUCTURE LINE DATA				
HAZARD	INFRASTRUCTURE CATEGORY	INFRASTRUCTURE TYPE	# OF SEGMENTS	SUM SEGMENT LENGTH (MILES)
WildlifeAuto	Natural	StreamRiver_Ephemeral	3	2.6
WildlifeAuto	Natural	StreamRiver_Perennial	2	1.6
WildlifeAuto	Transportation	Road	13	2.0
WildlifeAuto	Transportation	Road_A	20	16.1
WildlifeAuto	Transportation	Road_C	101	9.2
WildlifeAuto	Transportation	Road_D	5	0.8
WildlifeAuto	Transportation	Road_X	1	0.1
WildlifeAuto	Water	Connector	3	1.1

5.1.4.5 TOOELE CITY | RISK ASSESMENT RESULTS | AREA DATA

TOOELE CITY - RISK ASSESMENT - CRITICAL INFRASTRUCTURE AREAS DATA				
HAZARD	INFRASTRUCTURE CATEGORY	INFRASTRUCTURE TYPE	# OF SEGMENTS	SUM OF AREAS (ACRES)
AlluvialFan	Agricultural	Agriculture_Parcel	1	94.4
AlluvialFan	Agricultural	GrazingAllotment	2	32,682.6
AlluvialFan	Natural	Wetland	1	6.4
AlluvialFan	Water	GWPZone_2	1	120.0
AlluvialFan	Water	GWPZone_3	1	1,277.5
AlluvialFan	Water	GWPZone_4	5	40,026.9
AlluvialFan	Water	RetailCulinaryWaterServiceArea	1	13,682.1
AvalanchTerrain	Agricultural	Agriculture_Parcel	3	82.1
AvalanchTerrain	Agricultural	AgricultureWRLA_DryCrop	2	73.9
AvalanchTerrain	Agricultural	GrazingAllotment	2	32,682.6
AvalanchTerrain	Natural	LakePond_Perennial	1	10.5
AvalanchTerrain	Natural	Wetland	5	36.1
AvalanchTerrain	Water	GWPZone_1	1	0.7
AvalanchTerrain	Water	GWPZone_2	6	1,859.0
AvalanchTerrain	Water	GWPZone_3	7	7,159.0
AvalanchTerrain	Water	GWPZone_4	13	92,556.2
AvalanchTerrain	Water	RetailCulinaryWaterServiceArea	1	13,682.1
DebrisFlow	Agricultural	Agriculture_Parcel	1	39.0
DebrisFlow	Agricultural	GrazingAllotment	2	32,682.6
DebrisFlow	Natural	LakePond_Perennial	1	10.5

5.1.4.5 TOOELE CITY | RISK ASSESMENT RESULTS | AREA DATA

TOOELE CITY - RISK ASSESMENT - CRITICAL INFRASTRUCTURE AREAS DATA				
HAZARD	INFRASTRUCTURE CATEGORY	INFRASTRUCTURE TYPE	# OF SEGMENTS	SUM OF AREAS (ACRES)
DebrisFlow	Natural	Wetland	22	63.2
DebrisFlow	Water	GWPZone_1	2	3.6
DebrisFlow	Water	GWPZone_2	6	1,859.0
DebrisFlow	Water	GWPZone_3	7	7,159.0
DebrisFlow	Water	GWPZone_4	12	91,446.5
DebrisFlow	Water	RetailCulinaryWaterServiceArea	1	13,682.1
DwellingsWithBasements	Agricultural	Agriculture_Parcel	75	692.4
DwellingsWithBasements	Agricultural	AgricultureWRLA_DryCrop	6	113.9
DwellingsWithBasements	Agricultural	AgricultureWRLA_Food	13	244.6
DwellingsWithBasements	Agricultural	AgricultureWRLU_Sprinkler	51	151.6
DwellingsWithBasements	Agricultural	GrazingAllotment	3	32,987.5
DwellingsWithBasements	Natural	LakePond_Perennial	3	11.2
DwellingsWithBasements	Natural	Wetland	35	104.5
DwellingsWithBasements	Water	GWPZone_1	6	6.5
DwellingsWithBasements	Water	GWPZone_2	7	1,897.2
DwellingsWithBasements	Water	GWPZone_3	12	9,223.1
DwellingsWithBasements	Water	GWPZone_4	13	92,556.2
DwellingsWithBasements	Water	RetailCulinaryWaterServiceArea	2	14,707.5
Erosion_RoadTrail	Agricultural	Agriculture_Parcel	73	371.8
Erosion_RoadTrail	Agricultural	AgricultureWRLA_DryCrop	6	113.9

5.1.4.5 TOOELE CITY | RISK ASSESMENT RESULTS | AREA DATA

TOOELE CITY - RISK ASSESMENT - CRITICAL INFRASTRUCTURE AREAS DATA				
HAZARD	INFRASTRUCTURE CATEGORY	INFRASTRUCTURE TYPE	# OF SEGMENTS	SUM OF AREAS (ACRES)
Erosion_RoadTrail	Agricultural	AgricultureWRLA_Food	12	30.0
Erosion_RoadTrail	Agricultural	AgricultureWRLU_Sprinkler	51	151.6
Erosion_RoadTrail	Agricultural	GrazingAllotment	2	32,682.6
Erosion_RoadTrail	Natural	LakePond_Perennial	3	11.2
Erosion_RoadTrail	Natural	Wetland	32	86.6
Erosion_RoadTrail	Water	GWPZone_1	6	6.5
Erosion_RoadTrail	Water	GWPZone_2	7	1,897.2
Erosion_RoadTrail	Water	GWPZone_3	12	9,223.1
Erosion_RoadTrail	Water	GWPZone_4	13	92,556.2
Erosion_RoadTrail	Water	RetailCulinaryWaterServiceArea	2	14,707.5
FEMA_FloodZone	Agricultural	Agriculture_Parcel	64	1,112.5
FEMA_FloodZone	Agricultural	AgricultureWRLA_DryCrop	11	650.1
FEMA_FloodZone	Agricultural	AgricultureWRLA_Food	19	457.3
FEMA_FloodZone	Agricultural	AgricultureWRLU_Sprinkler	22	59.8
FEMA_FloodZone	Agricultural	GrazingAllotment	2	32,682.6
FEMA_FloodZone	Natural	Wetland	16	47.7
FEMA_FloodZone	Water	GWPZone_1	2	1.4
FEMA_FloodZone	Water	GWPZone_2	7	774.0
FEMA_FloodZone	Water	GWPZone_3	13	7,487.3
FEMA_FloodZone	Water	GWPZone_4	13	77,568.9

5.1.4.5 TOOELE CITY | RISK ASSESMENT RESULTS | AREA DATA

TOOELE CITY - RISK ASSESMENT - CRITICAL INFRASTRUCTURE AREAS DATA				
HAZARD	INFRASTRUCTURE CATEGORY	INFRASTRUCTURE TYPE	# OF SEGMENTS	SUM OF AREAS (ACRES)
FEMA_FloodZone	Water	RetailCulinaryWaterServiceArea	3	35,931.7
FEMA_FloodZone	Water	TransientNCZone_4	3	5,883.9
Flood_DamInundation	Agricultural	Agriculture_Parcel	273	2,961.0
Flood_DamInundation	Agricultural	AgricultureWRLA_DryCrop	46	1,533.4
Flood_DamInundation	Agricultural	AgricultureWRLA_Food	64	1,437.8
Flood_DamInundation	Agricultural	AgricultureWRLU_Sprinkler	79	358.6
Flood_DamInundation	Agricultural	GrazingAllotment	3	32,987.5
Flood_DamInundation	Natural	LakePond_Perennial	9	12.7
Flood_DamInundation	Natural	Reservoir_Treatment	1	0.1
Flood_DamInundation	Natural	Wetland	44	99.5
Flood_DamInundation	Water	GWPZone_1	9	6.5
Flood_DamInundation	Water	GWPZone_2	11	750.4
Flood_DamInundation	Water	GWPZone_3	14	7,867.3
Flood_DamInundation	Water	GWPZone_4	14	85,796.0
Flood_DamInundation	Water	RetailCulinaryWaterServiceArea	3	35,931.7
Flood_DamInundation	Water	TransientNCZone_4	2	3,922.6
Flood_SoilsPurdue	Agricultural	Agriculture_Parcel	61	231.1
Flood_SoilsPurdue	Agricultural	AgricultureWRLA_DryCrop	1	1.1
Flood_SoilsPurdue	Agricultural	AgricultureWRLA_Food	11	24.4
Flood_SoilsPurdue	Agricultural	AgricultureWRLU_Sprinkler	51	151.6

5.1.4.5 TOOELE CITY | RISK ASSESMENT RESULTS | AREA DATA

TOOELE CITY - RISK ASSESMENT - CRITICAL INFRASTRUCTURE AREAS DATA				
HAZARD	INFRASTRUCTURE CATEGORY	INFRASTRUCTURE TYPE	# OF SEGMENTS	SUM OF AREAS (ACRES)
Flood_SoilsPurdue	Agricultural	GrazingAllotment	2	32,682.6
Flood_SoilsPurdue	Natural	LakePond_Perennial	3	11.2
Flood_SoilsPurdue	Natural	Wetland	15	46.4
Flood_SoilsPurdue	Water	GWPZone_1	2	1.4
Flood_SoilsPurdue	Water	GWPZone_2	3	556.6
Flood_SoilsPurdue	Water	GWPZone_3	10	7,590.7
Flood_SoilsPurdue	Water	GWPZone_4	11	85,105.1
Flood_SoilsPurdue	Water	RetailCulinaryWaterServiceArea	2	14,707.5
Flood_USUValleyBottom	Agricultural	GrazingAllotment	2	32,682.6
Flood_USUValleyBottom	Natural	LakePond_Perennial	1	10.5
Flood_USUValleyBottom	Natural	Wetland	7	28.5
Flood_USUValleyBottom	Water	GWPZone_1	1	0.7
Flood_USUValleyBottom	Water	GWPZone_2	2	518.5
Flood_USUValleyBottom	Water	GWPZone_3	5	5,526.5
Flood_USUValleyBottom	Water	GWPZone_4	10	83,995.3
Flood_USUValleyBottom	Water	RetailCulinaryWaterServiceArea	1	13,682.1
Flood_Wetland_Riparian	Agricultural	Agriculture_Parcel	82	1,906.6
Flood_Wetland_Riparian	Agricultural	AgricultureWRLA_DryCrop	22	1,196.5
Flood_Wetland_Riparian	Agricultural	AgricultureWRLA_Food	27	1,149.3
Flood_Wetland_Riparian	Agricultural	AgricultureWRLU_Sprinkler	12	30.7

5.1.4.5 TOOELE CITY | RISK ASSESMENT RESULTS | AREA DATA

TOOELE CITY - RISK ASSESMENT - CRITICAL INFRASTRUCTURE AREAS DATA				
HAZARD	INFRASTRUCTURE CATEGORY	INFRASTRUCTURE TYPE	# OF SEGMENTS	SUM OF AREAS (ACRES)
Flood_Wetland_Riparian	Agricultural	GrazingAllotment	3	32,987.5
Flood_Wetland_Riparian	Natural	LakePond_Perennial	6	12.0
Flood_Wetland_Riparian	Natural	Reservoir_Treatment	1	0.1
Flood_Wetland_Riparian	Natural	Wetland	69	164.3
Flood_Wetland_Riparian	Water	GWPZone_1	2	3.6
Flood_Wetland_Riparian	Water	GWPZone_2	9	1,943.8
Flood_Wetland_Riparian	Water	GWPZone_3	13	9,398.1
Flood_Wetland_Riparian	Water	GWPZone_4	18	94,851.7
Flood_Wetland_Riparian	Water	RetailCulinaryWaterServiceArea	3	35,931.7
Flood_Wetland_Riparian	Water	TransientNCZone_4	3	5,883.9
Landslide	Agricultural	GrazingAllotment	1	18,263.2
Landslide	Water	GWPZone_2	1	1,069.3
Landslide	Water	GWPZone_3	4	4,869.1
Landslide	Water	GWPZone_4	10	81,962.8
RMRS_WildFireHP_2020	Agricultural	Agriculture_Parcel	230	3,684.7
RMRS_WildFireHP_2020	Agricultural	AgricultureWRLA_DryCrop	57	2,187.9
RMRS_WildFireHP_2020	Agricultural	AgricultureWRLA_Food	43	1,715.7
RMRS_WildFireHP_2020	Agricultural	AgricultureWRLU_Sprinkler	9	34.0
RMRS_WildFireHP_2020	Agricultural	GrazingAllotment	3	32,987.5
RMRS_WildFireHP_2020	Natural	LakePond_Perennial	2	11.1

5.1.4.5 TOOELE CITY | RISK ASSESMENT RESULTS | AREA DATA

TOOELE CITY - RISK ASSESMENT - CRITICAL INFRASTRUCTURE AREAS DATA				
HAZARD	INFRASTRUCTURE CATEGORY	INFRASTRUCTURE TYPE	# OF SEGMENTS	SUM OF AREAS (ACRES)
RMRS_WildFireHP_2020	Natural	Wetland	50	150.0
RMRS_WildFireHP_2020	Water	GWPZone_1	8	7.9
RMRS_WildFireHP_2020	Water	GWPZone_2	12	2,006.0
RMRS_WildFireHP_2020	Water	GWPZone_3	16	9,616.7
RMRS_WildFireHP_2020	Water	GWPZone_4	19	95,022.6
RMRS_WildFireHP_2020	Water	RetailCulinaryWaterServiceArea	3	35,931.7
RMRS_WildFireHP_2020	Water	TransientNCZone_4	3	5,883.9
SteepSlope	Agricultural	Agriculture_Parcel	4	102.7
SteepSlope	Agricultural	AgricultureWRLA_DryCrop	2	73.9
SteepSlope	Agricultural	GrazingAllotment	2	32,682.6
SteepSlope	Natural	LakePond_Perennial	1	10.5
SteepSlope	Natural	Wetland	16	61.7
SteepSlope	Water	GWPZone_1	3	4.3
SteepSlope	Water	GWPZone_2	6	1,859.0
SteepSlope	Water	GWPZone_3	7	7,159.0
SteepSlope	Water	GWPZone_4	13	92,556.2
SteepSlope	Water	RetailCulinaryWaterServiceArea	1	13,682.1
WildlifeAuto	Agricultural	Agriculture_Parcel	9	70.4
WildlifeAuto	Agricultural	AgricultureWRLA_DryCrop	4	36.3
WildlifeAuto	Agricultural	AgricultureWRLA_Food	2	21.1

5.1.4.5 TOOELE CITY | RISK ASSESMENT RESULTS | AREA DATA

TOOELE CITY - RISK ASSESMENT - CRITICAL INFRASTRUCTURE AREAS DATA				
HAZARD	INFRASTRUCTURE CATEGORY	INFRASTRUCTURE TYPE	# OF SEGMENTS	SUM OF AREAS (ACRES)
WildlifeAuto	Agricultural	AgricultureWRLU_Sprinkler	2	3.4
WildlifeAuto	Agricultural	GrazingAllotment	2	32,682.6
WildlifeAuto	Natural	Wetland	7	29.6
WildlifeAuto	Water	GWPZone_1	2	1.4
WildlifeAuto	Water	GWPZone_2	4	633.3
WildlifeAuto	Water	GWPZone_3	4	4,249.0
WildlifeAuto	Water	GWPZone_4	9	71,984.1
WildlifeAuto	Water	RetailCulinaryWaterServiceArea	1	13,682.1

5.4.5 TOOELE CITY - MITIGATION STRATEGIES

TOOELE CITY MITIGATION STRATEGIES - 2021 TOOELE COUNTY PDMP

Hazard	Strategy	Strategy Informational Categories	Details
AVALANCHE - CURRENT RESIDENTS/PROPERTY	Conduct training with backcountry winter outdoor users	NFIP compliant?	N/A
		Priority	Low
		Pot. Funding Sources	Local
		Responsible Entity	City
		Estimated Cost	\$0 - \$25 K
		Timeframe	2025
AVALANCHE - CURRENT RESIDENTS/PROPERTY	Develop an avalanche codes or regulations prohibiting or limiting structures in known avalanche zones	NFIP compliant?	N/A
		Priority	Low
		Pot. Funding Sources	Local
		Responsible Entity	City
		Estimated Cost	\$0 - \$25 K
		Timeframe	2025
AVALANCHE - CURRENT RESIDENTS/PROPERTY	Develop an avalanche warning system	Priority	Low
		Pot. Funding Sources	Local
		NFIP compliant?	Helps reduce risk
		Responsible Entity	City
		Estimated Cost	\$0 - \$25 K
		Timeframe	2025
AVALANCHE - CURRENT RESIDENTS/PROPERTY	Increase knowledge for city and county emergency managers	Priority	Low
		Pot. Funding Sources	Local
		NFIP compliant?	Helps reduce risk
		Responsible Entity	City
		Estimated Cost	\$0 - \$25 K
		Timeframe	2025
		NFIP compliant?	N/A

TOOELE CITY MITIGATION STRATEGIES - 2021 TOOELE COUNTY PDMP

Hazard	Strategy	Strategy Informational Categories	Details
AVALANCHE - CURRENT RESIDENTS/PROPERTY	Install fencing to support structures arranged to retain snow	Priority	Low
		Pot. Funding Sources	Local
		Responsible Entity	City
		Estimated Cost	\$0 - \$25 K
		Timeframe	2025
AVALANCHE - CURRENT RESIDENTS/PROPERTY	Other strategies and/or comments:		N/A
AVALANCHE - CURRENT RESIDENTS/PROPERTY	Plant trees and other vegetation to reduce impact of avalanches	NFIP compliant?	N/A
		Priority	Low
		Pot. Funding Sources	Local
		Responsible Entity	City
		Estimated Cost	\$0 - \$25 K
AVALANCHE - CURRENT RESIDENTS/PROPERTY	Purchase avalanche risk area lands or require buffers when developing infrastructure such as roads or buildings	Timeframe	2025
		NFIP compliant?	N/A
		Priority	Low
		Pot. Funding Sources	Local
		Responsible Entity	City
AVALANCHE - CURRENT RESIDENTS/PROPERTY	Retrofit critical facilities and infrastructure to withstand avalanches such as reinforced concrete walls	Estimated Cost	\$0 - \$25 K
		Timeframe	2025
		Pot. Funding Sources	Local
		Responsible Entity	City
		Priority	Low
		NFIP compliant?	N/A

TOOELE CITY MITIGATION STRATEGIES - 2021 TOOELE COUNTY PDMP

Hazard	Strategy	Strategy Informational Categories	Details
AVALANCHE - FUTURE RESIDENTS/PROPERTY	Conduct training with backcountry winter outdoor users	Priority	Low
		Pot. Funding Sources	Local
		Responsible Entity	City
		Estimated Cost	\$0 - \$25 K
		Timeframe	2025
AVALANCHE - FUTURE RESIDENTS/PROPERTY	Develop an avalanche codes or regulations prohibiting or limiting structures in known avalanche zones	NFIP compliant?	N/A
		Priority	Low
		Pot. Funding Sources	Local
		Responsible Entity	City
		Estimated Cost	\$0 - \$25 K
AVALANCHE - FUTURE RESIDENTS/PROPERTY	Develop an avalanche warning system	Timeframe	2025
		Priority	Low
		Pot. Funding Sources	Local
		NFIP compliant?	Helps reduce risk
		Responsible Entity	City
AVALANCHE - FUTURE RESIDENTS/PROPERTY	Increase knowledge for city and county emergency managers	Estimated Cost	\$0 - \$25 K
		Timeframe	2025
		Priority	Low
		Pot. Funding Sources	Local
		NFIP compliant?	Helps reduce risk
AVALANCHE - FUTURE RESIDENTS/PROPERTY	Install fencing to support structures arranged to retain snow	Responsible Entity	City
		Estimated Cost	\$0 - \$25 K
		Timeframe	2025
		Priority	Low
		Pot. Funding Sources	Local
AVALANCHE - FUTURE RESIDENTS/PROPERTY	Plant trees and other vegetation to reduce impact of avalanches	NFIP compliant?	N/A

TOOELE CITY MITIGATION STRATEGIES - 2021 TOOELE COUNTY PDMP

Hazard	Strategy	Strategy Informational Categories	Details
AVALANCHE - FUTURE RESIDENTS/PROPERTY	Purchase avalanche risk area lands or require buffers when developing infrastructure such as roads or buildings	NFIP compliant?	N/A
AVALANCHE - FUTURE RESIDENTS/PROPERTY	Retrofit critical facilities and infrastructure to withstand avalanches such as reinforced concrete walls	NFIP compliant?	N/A
		Priority	Low
		Pot. Funding Sources	Local
		Responsible Entity	City
		Estimated Cost	\$0 - \$25 K
		Timeframe	2025
DAM FAILURE - CURRENT RESIDENTS/PROPERTY	Develop ordinances to prohibit or limit critical facilities and/or structures in dam inundation areas	Priority	Low
		Pot. Funding Sources	Local
		NFIP compliant?	Helps reduce risk
		Responsible Entity	City
		Estimated Cost	\$0 - \$25 K
		Timeframe	2025
DAM FAILURE - CURRENT RESIDENTS/PROPERTY	Ensure new critical facilities and infrastructure are not built in dam inundation areas	Priority	Medium
		Pot. Funding Sources	Local
		NFIP compliant?	Helps reduce risk
		Responsible Entity	City
		Estimated Cost	\$0 - \$25 K
		Timeframe	2025
DAM FAILURE - CURRENT RESIDENTS/PROPERTY	Identify areas of encroachment below high hazard dams especially in dam inundation areas	Pot. Funding Sources	Local
		Priority	High
		NFIP compliant?	Helps reduce risk
		Responsible Entity	City
		Estimated Cost	\$0 - \$25 K
		Timeframe	2025

TOOELE CITY MITIGATION STRATEGIES - 2021 TOOELE COUNTY PDMP

Hazard	Strategy	Strategy Informational Categories	Details
DAM FAILURE - CURRENT RESIDENTS/PROPERTY	Promote National Dam Safety Awareness Day	Priority	Medium
		Pot. Funding Sources	Local
		NFIP compliant?	Helps reduce risk
		Responsible Entity	City
		Estimated Cost	\$0 - \$25 K
		Timeframe	2025
DAM FAILURE - CURRENT RESIDENTS/PROPERTY	Relocate government-owned facilities located near high risk dam failures	NFIP compliant?	N/A
DAM FAILURE - CURRENT RESIDENTS/PROPERTY	Work with the Utah Division of Water Rights and dam companies to bring deficient high hazard dams up to current industry standards	Pot. Funding Sources	State UGS
		Responsible Entity	State
		Priority	High
		NFIP compliant?	Helps reduce risk
		Estimated Cost	\$0 - \$25 K
		Timeframe	2025
DAM FAILURE - CURRENT RESIDENTS/PROPERTY	Work with the Utah Division of Water Rights and dam companies to install a dam monitoring system	Pot. Funding Sources	State UGS
		Responsible Entity	State
		Priority	High
		NFIP compliant?	Helps reduce risk
		Estimated Cost	\$0 - \$25 K
		Timeframe	2025
DAM FAILURE - CURRENT RESIDENTS/PROPERTY	Work with the Utah Division of Water Rights and dam companies to update dam emergency action plans	Pot. Funding Sources	State UGS
		Responsible Entity	State
		Priority	High
		NFIP compliant?	Helps reduce risk
		Estimated Cost	\$0 - \$25 K
		Timeframe	2025

TOOELE CITY MITIGATION STRATEGIES - 2021 TOOELE COUNTY PDMP

Hazard	Strategy	Strategy Informational Categories	Details
DAM FAILURE - FUTURE RESIDENTS/PROPERTY	Develop ordinances to prohibit or limit critical facilities and/or structures in dam inundation areas	NFIP compliant?	N/A
DAM FAILURE - FUTURE RESIDENTS/PROPERTY	Ensure new critical facilities and infrastructure are not built in dam inundation areas	NFIP compliant?	N/A
DAM FAILURE - FUTURE RESIDENTS/PROPERTY	Identify areas of encroachment below high hazard dams especially in dam inundation areas	Pot. Funding Sources	Local
		Priority	High
		NFIP compliant?	Helps reduce risk
		Responsible Entity	City
		Estimated Cost	\$0 - \$25 K
		Timeframe	2025
DAM FAILURE - FUTURE RESIDENTS/PROPERTY	Other strategies and/or comments:		None
DAM FAILURE - FUTURE RESIDENTS/PROPERTY	Promote National Dam Safety Awareness Day	Pot. Funding Sources	Local
		Priority	High
		NFIP compliant?	Helps reduce risk
		Responsible Entity	City
		Estimated Cost	\$0 - \$25 K
		Timeframe	2025
DAM FAILURE - FUTURE RESIDENTS/PROPERTY	Relocate government-owned facilities located near high risk dam failures	Pot. Funding Sources	Local
		Priority	High
		NFIP compliant?	Helps reduce risk
		Responsible Entity	City
		Estimated Cost	\$0 - \$25 K
		Timeframe	2025
DAM FAILURE - FUTURE RESIDENTS/PROPERTY	Work with the Utah Division of Water Rights and dam companies to bring deficient high hazard dams up to current industry standards	Pot. Funding Sources	State UGS
		Responsible Entity	State
		Priority	High
		NFIP compliant?	Helps reduce risk

TOOELE CITY MITIGATION STRATEGIES - 2021 TOOELE COUNTY PDMP

Hazard	Strategy	Strategy Informational Categories	Details
		Estimated Cost	\$0 - \$25 K
		Timeframe	2025
DAM FAILURE - FUTURE RESIDENTS/PROPERTY	Work with the Utah Division of Water Rights and dam companies to install a dam monitoring system	Pot. Funding Sources	State UGS
		Responsible Entity	State
		Priority	Low
		NFIP compliant?	Helps reduce risk
		Estimated Cost	\$0 - \$25 K
		Timeframe	2025
DAM FAILURE - FUTURE RESIDENTS/PROPERTY	Work with the Utah Division of Water Rights and dam companies to update dam emergency action plans	Pot. Funding Sources	Local
		Priority	High
		NFIP compliant?	Helps reduce risk
		Responsible Entity	City
		Estimated Cost	\$0 - \$25 K
		Timeframe	2025
DROUGHT - CURRENT RESIDENTS/PROPERTY	Designate and or preserve adequate source water protection zones or groundwater recharge areas	Pot. Funding Sources	Local
		Priority	High
		NFIP compliant?	Helps reduce risk
		Responsible Entity	City
		Estimated Cost	\$0 - \$25 K
		Timeframe	2022
DROUGHT - CURRENT RESIDENTS/PROPERTY	Educate Decision Makers and Government Employees on Water Saving Techniques (list event details in "comments")	Pot. Funding Sources	Local
		Priority	High
		NFIP compliant?	Helps reduce risk
		Responsible Entity	City
		Estimated Cost	\$0 - \$25 K

TOOELE CITY MITIGATION STRATEGIES - 2021 TOOELE COUNTY PDMP

Hazard	Strategy	Strategy Informational Categories	Details
		Timeframe	2022
DROUGHT - CURRENT RESIDENTS/PROPERTY	Educate Residents on Water Saving Techniques (list event details in "comments")	Pot. Funding Sources	Local
		Priority	High
		NFIP compliant?	Helps reduce risk
		Responsible Entity	City
		Estimated Cost	\$25 K - \$50 K
		Timeframe	2022
DROUGHT - CURRENT RESIDENTS/PROPERTY	Educate the Agriculture Sector on Soil and Water Saving Practices (list event details in "comments")	NFIP compliant?	N/A
DROUGHT - CURRENT RESIDENTS/PROPERTY	Enforce codes ordinances statues and laws that promote drought resiliency and water conservation practices	Pot. Funding Sources	Local
		Priority	High
		NFIP compliant?	Helps reduce risk
		Responsible Entity	City
		Estimated Cost	\$100 K - \$250 K
		Timeframe	2022
DROUGHT - CURRENT RESIDENTS/PROPERTY	Expand and Improve Existing Potable Water Systems	Pot. Funding Sources	Local
		Priority	High
		NFIP compliant?	Helps reduce risk
		Responsible Entity	City
		Estimated Cost	\$1 Mil +
		Timeframe	2022
DROUGHT - CURRENT RESIDENTS/PROPERTY	Improve Public Water Infrastructure and Management with Water Provider	Pot. Funding Sources	Local
		Priority	High
		NFIP compliant?	Helps reduce risk
		Responsible Entity	City
		Estimated Cost	\$1 Mil +

TOOELE CITY MITIGATION STRATEGIES - 2021 TOOELE COUNTY PDMP

Hazard	Strategy	Strategy Informational Categories	Details
		Timeframe	2022
DROUGHT - CURRENT RESIDENTS/PROPERTY	Monitor Water Supply for leaks system failures inefficiencies etc. via monitoring system and audits	Pot. Funding Sources	Local
		Priority	High
		NFIP compliant?	Helps reduce risk
		Responsible Entity	City
		Estimated Cost	\$0 - \$25 K
		Timeframe	2022
DROUGHT - CURRENT RESIDENTS/PROPERTY	Other strategies and/or comments:		none
DROUGHT - CURRENT RESIDENTS/PROPERTY	Plan and Prepare for Drought via emergency planning and warning systems	Pot. Funding Sources	Local
		Priority	High
		NFIP compliant?	Helps reduce risk
		Responsible Entity	City
		Estimated Cost	\$0 - \$25 K
		Timeframe	2022
DROUGHT - CURRENT RESIDENTS/PROPERTY	Retrofit Water Supply Systems to handle current and new growth	Priority	Medium
		Pot. Funding Sources	Local
		NFIP compliant?	Helps reduce risk
		Responsible Entity	City
		Estimated Cost	\$50 K - \$100 K
		Timeframe	2022
DROUGHT - CURRENT RESIDENTS/PROPERTY	Update and adopt drought ordinances	Pot. Funding Sources	Local
		Priority	High
		NFIP compliant?	Helps reduce risk
		Responsible Entity	City
		Estimated Cost	\$25 K - \$50 K

TOOELE CITY MITIGATION STRATEGIES - 2021 TOOELE COUNTY PDMP

Hazard	Strategy	Strategy Informational Categories	Details
		Timeframe	2022
DROUGHT - FUTURE RESIDENTS/PROPERTY	Designate and or preserve adequate source water protection zones or groundwater recharge areas	Pot. Funding Sources	Local
		Priority	High
		NFIP compliant?	Helps reduce risk
		Responsible Entity	City
		Estimated Cost	\$0 - \$25 K
		Timeframe	2022
DROUGHT - FUTURE RESIDENTS/PROPERTY	Educate Decision Makers and Government Employees on Water Saving Techniques (list event details in "comments")	Pot. Funding Sources	Local
		Priority	High
		NFIP compliant?	Helps reduce risk
		Responsible Entity	City
		Estimated Cost	\$0 - \$25 K
		Timeframe	2022
DROUGHT - FUTURE RESIDENTS/PROPERTY	Educate Residents on Water Saving Techniques (list event details in "comments")	Pot. Funding Sources	Local
		Priority	High
		NFIP compliant?	Helps reduce risk
		Responsible Entity	City
		Estimated Cost	\$25 K - \$50 K
		Timeframe	2022
DROUGHT - FUTURE RESIDENTS/PROPERTY	Educate the Agriculture Sector on Soil and Water Saving Practices (list event details in "comments")	NFIP compliant?	N/A
DROUGHT - FUTURE RESIDENTS/PROPERTY	Enforce codes ordinances statues and laws that promote drought resiliency and water conservation practices	Pot. Funding Sources	Local
		Priority	High
		NFIP compliant?	Helps reduce risk
		Responsible Entity	City
		Estimated Cost	\$50 K - \$100 K

TOOELE CITY MITIGATION STRATEGIES - 2021 TOOELE COUNTY PDMP

Hazard	Strategy	Strategy Informational Categories	Details
		Timeframe	2022
DROUGHT - FUTURE RESIDENTS/PROPERTY	Expand and Improve Existing Potable Water Systems	Pot. Funding Sources	Local
		Priority	High
		NFIP compliant?	Helps reduce risk
		Responsible Entity	City
		Estimated Cost	\$1 Mil +
		Timeframe	2022
DROUGHT - FUTURE RESIDENTS/PROPERTY	Improve Public Water Infrastructure and Management with Water Provider	Pot. Funding Sources	Local
		Priority	High
		NFIP compliant?	Helps reduce risk
		Responsible Entity	City
		Estimated Cost	\$1 Mil +
		Timeframe	2022
DROUGHT - FUTURE RESIDENTS/PROPERTY	Monitor Water Supply for leaks system failures inefficiencies etc. via monitoring system and audits	Pot. Funding Sources	Local
		Priority	High
		NFIP compliant?	Helps reduce risk
		Responsible Entity	City
		Estimated Cost	\$0 - \$25 K
		Timeframe	2022
DROUGHT - FUTURE RESIDENTS/PROPERTY	Plan and Prepare for Drought via emergency planning and warning systems	Pot. Funding Sources	Local
		Priority	High
		NFIP compliant?	Helps reduce risk
		Responsible Entity	City
		Estimated Cost	\$0 - \$25 K
		Timeframe	2022

TOOELE CITY MITIGATION STRATEGIES - 2021 TOOELE COUNTY PDMP

Hazard	Strategy	Strategy Informational Categories	Details
DROUGHT - FUTURE RESIDENTS/PROPERTY	Retrofit Water Supply Systems to handle current and new growth	Priority	Medium
		Pot. Funding Sources	Local
		NFIP compliant?	Helps reduce risk
		Responsible Entity	City
		Estimated Cost	\$50 K - \$100 K
		Timeframe	2022
DROUGHT - FUTURE RESIDENTS/PROPERTY	Update and adopt drought ordinances	Pot. Funding Sources	Local
		Priority	High
		NFIP compliant?	Helps reduce risk
		Responsible Entity	City
		Estimated Cost	\$0 - \$25 K
		Timeframe	2022
EARTHQUAKE - CURRENT RESIDENTS/PROPERTY	Building Code Adoption and Enforcement	Pot. Funding Sources	Local
		Priority	High
		NFIP compliant?	Helps reduce risk
		Responsible Entity	City
		Estimated Cost	\$0 - \$25 K
		Timeframe	2022
EARTHQUAKE - CURRENT RESIDENTS/PROPERTY	Conduct Building Safety Inspections	Pot. Funding Sources	Local
		Priority	High
		NFIP compliant?	Helps reduce risk
		Responsible Entity	City
		Estimated Cost	\$0 - \$25 K
		Timeframe	2022
EARTHQUAKE - CURRENT RESIDENTS/PROPERTY	Conduct Outreach to Builders Architects Engineers and Inspectors	NFIP compliant?	N/A

TOOELE CITY MITIGATION STRATEGIES - 2021 TOOELE COUNTY PDMP

Hazard	Strategy	Strategy Informational Categories	Details
EARTHQUAKE - CURRENT RESIDENTS/PROPERTY	Develop and/or review or adopt model earthquake hazard ordinance	NFIP compliant?	N/A
EARTHQUAKE - CURRENT RESIDENTS/PROPERTY	Establish a "green infrastructure" program to link manage and expand existing parks preserves greenways etc	Priority	Low
		Pot. Funding Sources	Local
		NFIP compliant?	Helps reduce risk
		Responsible Entity	City
		Estimated Cost	\$100 K - \$250 K
		Timeframe	2024
EARTHQUAKE - CURRENT RESIDENTS/PROPERTY	Increase Awareness and Education of Earthquakes through an educational event	Priority	Medium
		Pot. Funding Sources	Local
		NFIP compliant?	Improve CRS score
		Responsible Entity	City
		Estimated Cost	\$0 - \$25 K
		Timeframe	2022
EARTHQUAKE - CURRENT RESIDENTS/PROPERTY	Local Planning such as critical facilities planning financial incentives creating a safety committee emergency planning etc	Priority	Low
		Pot. Funding Sources	Local
		NFIP compliant?	Helps reduce risk
		Responsible Entity	City
		Estimated Cost	\$0 - \$25 K
		Timeframe	2025
EARTHQUAKE - CURRENT RESIDENTS/PROPERTY	Retrofit Critical Facilities and Infrastructure to Withstand Earthquakes (list specifics in "comments" section)	Pot. Funding Sources	State UGS
		Responsible Entity	State
		Priority	High
		NFIP compliant?	Helps reduce risk
		Estimated Cost	\$1 Mil +
		Timeframe	2022

TOOELE CITY MITIGATION STRATEGIES - 2021 TOOELE COUNTY PDMP

Hazard	Strategy	Strategy Informational Categories	Details
EARTHQUAKE - FUTURE RESIDENTS/PROPERTY	Building Code Adoption and Enforcement	Pot. Funding Sources	Local
		Priority	High
		NFIP compliant?	Helps reduce risk
		Responsible Entity	City
		Estimated Cost	\$0 - \$25 K
		Timeframe	2022
EARTHQUAKE - FUTURE RESIDENTS/PROPERTY	Conduct Building Safety Inspections	Pot. Funding Sources	Local
		Priority	High
		NFIP compliant?	Helps reduce risk
		Responsible Entity	City
		Estimated Cost	\$0 - \$25 K
		Timeframe	2022
EARTHQUAKE - FUTURE RESIDENTS/PROPERTY	Conduct Outreach to Builders Architects Engineers and Inspectors	NFIP compliant?	N/A
EARTHQUAKE - FUTURE RESIDENTS/PROPERTY	Develop and/or review or adopt model earthquake hazard ordinance	NFIP compliant?	N/A
EARTHQUAKE - FUTURE RESIDENTS/PROPERTY	Establish a "green infrastructure" program to link manage and expand existing parks preserves greenways etc	Priority	Low
		Pot. Funding Sources	Local
		NFIP compliant?	Helps reduce risk
		Responsible Entity	City
		Estimated Cost	\$100 K - \$250 K
		Timeframe	2024
EARTHQUAKE - FUTURE RESIDENTS/PROPERTY	Increase Awareness and Education of Earthquakes through an educational event	Priority	Medium
		Pot. Funding Sources	Local
		NFIP compliant?	Improve CRS score
		Responsible Entity	City
		Estimated Cost	\$0 - \$25 K

TOOELE CITY MITIGATION STRATEGIES - 2021 TOOELE COUNTY PDMP

Hazard	Strategy	Strategy Informational Categories	Details
		Timeframe	2022
EARTHQUAKE - FUTURE RESIDENTS/PROPERTY	Local Planning such as critical facilities planning financial incentives creating a safety committee emergency planning etc	Priority	Low
		Pot. Funding Sources	Local
		NFIP compliant?	Helps reduce risk
		Responsible Entity	City
		Estimated Cost	\$0 - \$25 K
		Timeframe	2022
EARTHQUAKE - FUTURE RESIDENTS/PROPERTY	Retrofit Critical Facilities and Infrastructure to Withstand Earthquakes (list specifics in "comments" section)	Pot. Funding Sources	State UGS
		Responsible Entity	State
		Priority	High
		NFIP compliant?	Helps reduce risk
		Estimated Cost	\$1 Mil +
		Timeframe	2022
FLOOD - CURRENT RESIDENTS/PROPERTY	Adopt and Enforce Building Codes and Development Standards	Pot. Funding Sources	Local
		Priority	High
		NFIP compliant?	Helps reduce risk
		Responsible Entity	City
		Estimated Cost	\$0 - \$25 K
		Timeframe	2022
FLOOD - CURRENT RESIDENTS/PROPERTY	Conduct Regular Maintenance for Drainage Systems and Flood Control Structures	Pot. Funding Sources	Local
		Priority	High
		NFIP compliant?	Helps reduce risk
		Responsible Entity	City
		Estimated Cost	\$0 - \$25 K
		Timeframe	2022

TOOELE CITY MITIGATION STRATEGIES - 2021 TOOELE COUNTY PDMP

Hazard	Strategy	Strategy Informational Categories	Details
FLOOD - CURRENT RESIDENTS/PROPERTY	Coordination and Partnerships i.e. develop stormwater committee regional watershed council local councils etc	Priority	Medium
		Pot. Funding Sources	Local
		NFIP compliant?	Helps reduce risk
		Responsible Entity	City
		Estimated Cost	\$0 - \$25 K
		Timeframe	2024
FLOOD - CURRENT RESIDENTS/PROPERTY	Elevate or Retrofit Facilities and Infrastructure	NFIP compliant?	N/A
FLOOD - CURRENT RESIDENTS/PROPERTY	Floodproof At-Risk Residential and Non-Residential Structures	NFIP compliant?	N/A
FLOOD - CURRENT RESIDENTS/PROPERTY	Improve Stormwater Drainage Capacity	Pot. Funding Sources	Local
		Priority	High
		NFIP compliant?	Helps reduce risk
		Responsible Entity	City
		Estimated Cost	\$500 K - \$1 Mil
		Timeframe	2022
FLOOD - CURRENT RESIDENTS/PROPERTY	Information and educational events (list details in "comments" section)	NFIP compliant?	N/A
FLOOD - CURRENT RESIDENTS/PROPERTY	Other local planning mechanisms such as joining the NFIP creating risk plans establishing green infrastructure plan etc	Pot. Funding Sources	Local
		Priority	High
		NFIP compliant?	Helps reduce risk
		Responsible Entity	City
		Estimated Cost	\$0 - \$25 K
		Timeframe	2022
FLOOD - CURRENT RESIDENTS/PROPERTY	Preserve Floodplains and Open Space through ordinances land purchase conservation easements etc	Pot. Funding Sources	Local
		Priority	High
		NFIP compliant?	Helps reduce risk
		Responsible Entity	City

TOOELE CITY MITIGATION STRATEGIES - 2021 TOOELE COUNTY PDMP

Hazard	Strategy	Strategy Informational Categories	Details
		Estimated Cost	\$0 - \$25 K
		Timeframe	2025
FLOOD - CURRENT RESIDENTS/PROPERTY	Protect and Restore Natural Flood Mitigation Features through natural greenway protection and restoration	Priority	Medium
		Pot. Funding Sources	Local
		NFIP compliant?	Helps reduce risk
		Responsible Entity	City
		Estimated Cost	\$50 K - \$100 K
		Timeframe	2025
FLOOD - CURRENT RESIDENTS/PROPERTY	Protect Infrastructure such as roads bridges wastewater treatment etc	Pot. Funding Sources	Local
		Priority	High
		NFIP compliant?	Helps reduce risk
		Responsible Entity	City
		Estimated Cost	\$250 K - \$500 K
		Timeframe	2022
FLOOD - CURRENT RESIDENTS/PROPERTY	Remove Existing Structures from Flood Hazard Area	NFIP compliant?	N/A
FLOOD - CURRENT RESIDENTS/PROPERTY	Review and/or Develop Codes Ordinances and Policies	Priority	Medium
		Pot. Funding Sources	Local
		NFIP compliant?	Helps reduce risk
		Responsible Entity	City
		Estimated Cost	\$0 - \$25 K
		Timeframe	2025
FLOOD - CURRENT RESIDENTS/PROPERTY	Stormwater Management Planning	Pot. Funding Sources	Local
		Priority	High
		NFIP compliant?	Helps reduce risk
		Responsible Entity	City

TOOELE CITY MITIGATION STRATEGIES - 2021 TOOELE COUNTY PDMP

Hazard	Strategy	Strategy Informational Categories	Details
		Estimated Cost	\$0 - \$25 K
		Timeframe	2022
FLOOD - FUTURE RESIDENTS/PROPERTY	Adopt and Enforce Building Codes and Development Standards	Pot. Funding Sources	Local
		Priority	High
		NFIP compliant?	Helps reduce risk
		Responsible Entity	City
		Estimated Cost	\$0 - \$25 K
		Timeframe	2022
FLOOD - FUTURE RESIDENTS/PROPERTY	Conduct Regular Maintenance for Drainage Systems and Flood Control Structures	Pot. Funding Sources	Local
		Priority	High
		NFIP compliant?	Helps reduce risk
		Responsible Entity	City
		Estimated Cost	\$0 - \$25 K
		Timeframe	2022
FLOOD - FUTURE RESIDENTS/PROPERTY	Coordination and Partnerships i.e. develop stormwater committee regional watershed council local councils etc	Priority	Medium
		Pot. Funding Sources	Local
		NFIP compliant?	Helps reduce risk
		Responsible Entity	City
		Estimated Cost	\$0 - \$25 K
		Timeframe	2022
FLOOD - FUTURE RESIDENTS/PROPERTY	Elevate or Retrofit Facilities and Infrastructure	NFIP compliant?	N/A
FLOOD - FUTURE RESIDENTS/PROPERTY	Floodproof At-Risk Residential and Non-Residential Structures	NFIP compliant?	N/A
FLOOD - FUTURE RESIDENTS/PROPERTY	Improve Stormwater Drainage Capacity	Pot. Funding Sources	Local
		Priority	High
		NFIP compliant?	Helps reduce risk

TOOELE CITY MITIGATION STRATEGIES - 2021 TOOELE COUNTY PDMP

Hazard	Strategy	Strategy Informational Categories	Details
FLOOD - FUTURE RESIDENTS/PROPERTY	Improve Stormwater Drainage Capacity	Responsible Entity	City
		Estimated Cost	\$500 K - \$1 Mil
		Timeframe	2022
FLOOD - FUTURE RESIDENTS/PROPERTY	Information and educational events (list details in "comments" section)	NFIP compliant?	N/A
FLOOD - FUTURE RESIDENTS/PROPERTY	Other local planning mechanisms such as joining the NFIP creating risk plans establishing green infrastructure plan etc	Pot. Funding Sources	Local
		Priority	High
		NFIP compliant?	Helps reduce risk
		Responsible Entity	City
		Estimated Cost	\$0 - \$25 K
		Timeframe	2022
FLOOD - FUTURE RESIDENTS/PROPERTY	Preserve Floodplains and Open Space through ordinances land purchase conservation easements etc	Priority	Medium
		Pot. Funding Sources	Local
		NFIP compliant?	Helps reduce risk
		Responsible Entity	City
		Estimated Cost	\$0 - \$25 K
		Timeframe	2025
FLOOD - FUTURE RESIDENTS/PROPERTY	Protect and Restore Natural Flood Mitigation Features through natural greenway protection and restoration	Priority	Medium
		Pot. Funding Sources	Local
		NFIP compliant?	Helps reduce risk
		Responsible Entity	City
		Estimated Cost	\$0 - \$25 K
		Timeframe	2025
FLOOD - FUTURE RESIDENTS/PROPERTY	Protect Infrastructure such as roads bridges wastewater treatment etc	Pot. Funding Sources	Local
		Priority	High
		NFIP compliant?	Helps reduce risk

TOOELE CITY MITIGATION STRATEGIES - 2021 TOOELE COUNTY PDMP

Hazard	Strategy	Strategy Informational Categories	Details
FLOOD - FUTURE RESIDENTS/PROPERTY	Protect infrastructure such as roads, bridges, wastewater treatment, etc.	Responsible Entity	City
		Estimated Cost	\$250 K - \$500 K
		Timeframe	2025
FLOOD - FUTURE RESIDENTS/PROPERTY	Remove Existing Structures from Flood Hazard Area	NFIP compliant?	N/A
FLOOD - FUTURE RESIDENTS/PROPERTY	Review and/or Develop Codes, Ordinances and Policies	Priority	Medium
		Pot. Funding Sources	Local
		NFIP compliant?	Helps reduce risk
		Responsible Entity	City
		Estimated Cost	\$0 - \$25 K
		Timeframe	2025
FLOOD - FUTURE RESIDENTS/PROPERTY	Stormwater Management Planning	Pot. Funding Sources	Local
		Priority	High
		NFIP compliant?	Helps reduce risk
		Responsible Entity	City
		Estimated Cost	\$0 - \$25 K
		Timeframe	2022
LANDSLIDE/STEEP SLOPES - CURRENT RESIDENTS/PROPERTY	Apply soil stabilization measures such as planting soil stabilizing vegetation on steep, publicly-owned slopes	NFIP compliant?	N/A
LANDSLIDE/STEEP SLOPES - CURRENT RESIDENTS/PROPERTY	Create a plan to implement reinforcement measures in high-risk landslide areas	NFIP compliant?	N/A
LANDSLIDE/STEEP SLOPES - CURRENT RESIDENTS/PROPERTY	Develop codes or regulation prohibiting or limiting structures in known landslide/steep slope risk areas	NFIP compliant?	N/A
LANDSLIDE/STEEP SLOPES - CURRENT RESIDENTS/PROPERTY	Implement monitoring mechanisms/procedures (i.e., visual inspection or electronic monitoring systems)	NFIP compliant?	N/A
LANDSLIDE/STEEP SLOPES - CURRENT RESIDENTS/PROPERTY	Increase Landslide/Steep Slope Risk Awareness and Education (list specifics in comments) - NFIP compliant?		N/A
LANDSLIDE/STEEP SLOPES - CURRENT RESIDENTS/PROPERTY	Install catch-fall nets for rocks at steep slopes near roadways	NFIP compliant?	N/A
LANDSLIDE/STEEP SLOPES - CURRENT RESIDENTS/PROPERTY	Locate and/or relocate utilities outside of landslide areas to decrease the risk of service disruption	NFIP compliant?	N/A
LANDSLIDE/STEEP SLOPES - CURRENT RESIDENTS/PROPERTY	Prevent or Reduce Impacts from Landslides by Stabilizing Slopes	NFIP compliant?	N/A
LANDSLIDE/STEEP SLOPES - CURRENT RESIDENTS/PROPERTY	Remove Existing Building and Infrastructure from Landslide/Steep Slope Hazard Area	NFIP compliant?	N/A

TOOELE CITY MITIGATION STRATEGIES - 2021 TOOELE COUNTY PDMP

Hazard	Strategy	Strategy Informational Categories	Details
LANDSLIDE/STEEP SLOPES - CURRENT RESIDENTS/PROPERTY	Require secondary water meters and smart irrigation controllers to reduce excessive groundwater near known landslide areas	NFIP compliant?	N/A
LANDSLIDE/STEEP SLOPES - CURRENT RESIDENTS/PROPERTY	Retrofit power water and sewer infrastructure	NFIP compliant?	N/A
LANDSLIDE/STEEP SLOPES - CURRENT RESIDENTS/PROPERTY	Use debris-flow measures that may reduce damage in sloping areas such as stabilization energy dissipation and flow control measures	NFIP compliant?	N/A
LANDSLIDE/STEEP SLOPES - FUTURE RESIDENTS/PROPERTY	Apply soil stabilization measures such as planting soil stabilizing vegetation on steep publicly-owned slopes	NFIP compliant?	N/A
LANDSLIDE/STEEP SLOPES - FUTURE RESIDENTS/PROPERTY	Create a plan to implement reinforcement measures in high-risk landslide areas	Priority	Medium
		Pot. Funding Sources	Local
		NFIP compliant?	Helps reduce risk
		Responsible Entity	City
		Estimated Cost	\$0 - \$25 K
		Timeframe	2025
LANDSLIDE/STEEP SLOPES - FUTURE RESIDENTS/PROPERTY	Develop an codes or regulation prohibiting or limiting structures in known landslide/steep slope risk areas	Priority	Medium
		Pot. Funding Sources	Local
		NFIP compliant?	Helps reduce risk
		Responsible Entity	City
		Estimated Cost	\$0 - \$25 K
		Timeframe	2025
LANDSLIDE/STEEP SLOPES - FUTURE RESIDENTS/PROPERTY	Implement monitoring mechanisms/procedures (i.e. visual inspection or electronic monitoring systems)	NFIP compliant?	N/A
LANDSLIDE/STEEP SLOPES - FUTURE RESIDENTS/PROPERTY	Increase Landslide/Steep Slope Risk Awareness and Education (list specifics in comments)	Estimated Cost	\$0 - \$25 K
		NFIP compliant?	Helps reduce risk
		Pot. Funding Sources	Local
		Priority	Medium
		Responsible Entity	City
		Timeframe	2025
LANDSLIDE/STEEP SLOPES - FUTURE RESIDENTS/PROPERTY	Install catch-fall nets for rocks at steep slopes near roadways	NFIP compliant?	N/A
		Priority	Medium

TOOELE CITY MITIGATION STRATEGIES - 2021 TOOELE COUNTY PDMP

Hazard	Strategy	Strategy Informational Categories	Details
LANDSLIDE/STEEP SLOPES - FUTURE RESIDENTS/PROPERTY	Locate and/or relocate utilities outside of landslide areas to decrease the risk of service disruption	Pot. Funding Sources	Local
		NFIP compliant?	Helps reduce risk
		Responsible Entity	City
		Estimated Cost	\$250 K - \$500 K
		Timeframe	2025
LANDSLIDE/STEEP SLOPES - FUTURE RESIDENTS/PROPERTY	Prevent or Reduce Impacts from Landslides by Stabilizing Slopes	NFIP compliant?	N/A
LANDSLIDE/STEEP SLOPES - FUTURE RESIDENTS/PROPERTY	Remove Existing Building and Infrastructure from Landslide/Steep Slope Hazard Area	NFIP compliant?	N/A
LANDSLIDE/STEEP SLOPES - FUTURE RESIDENTS/PROPERTY	Require secondary water meters and smart irrigation controllers to reduce excessive groundwater near known landslide areas	NFIP compliant?	N/A
LANDSLIDE/STEEP SLOPES - FUTURE RESIDENTS/PROPERTY	Retrofit power water and sewer infrastructure	NFIP compliant?	N/A
LANDSLIDE/STEEP SLOPES - FUTURE RESIDENTS/PROPERTY	Use debris-flow measures that may reduce damage in sloping areas such as stabilization energy dissipation and flow control measures	NFIP compliant?	N/A
PROBLEM SOILS - CURRENT RESIDENTS/PROPERTY	Adopt an ordinance promoting permafrost sensitive construction practices	NFIP compliant?	N/A
PROBLEM SOILS - CURRENT RESIDENTS/PROPERTY	Develop a code or regulation prohibiting or limiting structures in known problem soil areas	Priority	Medium
		Pot. Funding Sources	Local
		NFIP compliant?	Helps reduce risk
		Responsible Entity	City
		Estimated Cost	\$0 - \$25 K
		Timeframe	2022
PROBLEM SOILS - CURRENT RESIDENTS/PROPERTY	Promote community awareness of risks and impacts from building in problem soil areas	NFIP compliant?	N/A
PROBLEM SOILS - CURRENT RESIDENTS/PROPERTY	Require geotechnical study to determine risk to structures in various geographic areas	Priority	Medium
		Pot. Funding Sources	Local
		NFIP compliant?	Helps reduce risk
		Responsible Entity	City
		Estimated Cost	\$0 - \$25 K
		Timeframe	2022
		Priority	Medium

TOOELE CITY MITIGATION STRATEGIES - 2021 TOOELE COUNTY PDMP

Hazard	Strategy	Strategy Informational Categories	Details
PROBLEM SOILS - CURRENT RESIDENTS/PROPERTY	Restrict development in areas with soil that is considered poor or unsuitable for development	Pot. Funding Sources	Local
		NFIP compliant?	Helps reduce risk
		Responsible Entity	City
		Estimated Cost	\$0 - \$25 K
		Timeframe	2022
PROBLEM SOILS - CURRENT RESIDENTS/PROPERTY	Retrofit or remove existing structures from problem soil areas	NFIP compliant?	N/A
PROBLEM SOILS - FUTURE RESIDENTS/PROPERTY	Adopt an ordinance promoting permafrost sensitive construction practices	NFIP compliant?	N/A
PROBLEM SOILS - FUTURE RESIDENTS/PROPERTY	Develop a code or regulation prohibiting or limiting structures in known problem soil areas	Priority	Medium
		Pot. Funding Sources	Local
		NFIP compliant?	Helps reduce risk
		Responsible Entity	City
		Estimated Cost	\$0 - \$25 K
		Timeframe	2022
PROBLEM SOILS - FUTURE RESIDENTS/PROPERTY	Promote community awareness of risks and impacts from building in problem soil areas	NFIP compliant?	N/A
PROBLEM SOILS - FUTURE RESIDENTS/PROPERTY	Require geotechnical study to determine risk to structures in various geographic areas	Priority	Medium
		Pot. Funding Sources	Local
		NFIP compliant?	Helps reduce risk
		Responsible Entity	City
		Estimated Cost	\$0 - \$25 K
		Timeframe	2022
PROBLEM SOILS - FUTURE RESIDENTS/PROPERTY	Restrict development in areas with soil that is considered poor or unsuitable for development	Priority	Medium
		Pot. Funding Sources	Local
		NFIP compliant?	Helps reduce risk
		Responsible Entity	City
		Estimated Cost	\$0 - \$25 K

TOOELE CITY MITIGATION STRATEGIES - 2021 TOOELE COUNTY PDMP

Hazard	Strategy	Strategy Informational Categories	Details
		Timeframe	2022
PROBLEM SOILS - FUTURE RESIDENTS/PROPERTY	Retrofit or remove existing structures from problem soil areas	NFIP compliant?	N/A
RADON - CURRENT RESIDENTS/PROPERTY	Advertise radon testing equipment	NFIP compliant?	N/A
RADON - CURRENT RESIDENTS/PROPERTY	Develop and distribute radon hazard guides for homeowners and businesses	NFIP compliant?	N/A
RADON - CURRENT RESIDENTS/PROPERTY	Develop radon prevention standards and regulations for new housing including installation of ventilation systems in high hazard areas	NFIP compliant?	N/A
RADON - CURRENT RESIDENTS/PROPERTY	Encourage homeowners to install radon systems in home	NFIP compliant?	N/A
RADON - CURRENT RESIDENTS/PROPERTY	Encourage homeowners to test for radon	Priority	Medium
		Pot. Funding Sources	Local
		NFIP compliant?	Helps reduce risk
		Responsible Entity	City
		Estimated Cost	\$0 - \$25 K
		Timeframe	2025
RADON - CURRENT RESIDENTS/PROPERTY	Require testing at existing facilities and homes during and/or immediately after construction	NFIP compliant?	N/A
RADON - CURRENT RESIDENTS/PROPERTY	Retrofit homes with radon ventilation systems	NFIP compliant?	N/A
RADON - CURRENT RESIDENTS/PROPERTY	Review and/or Develop Codes Ordinances and Policies	NFIP compliant?	N/A
RADON - FUTURE RESIDENTS/PROPERTY	Advertise radon testing equipment	NFIP compliant?	N/A
RADON - FUTURE RESIDENTS/PROPERTY	Develop and distribute radon hazard guides for homeowners and businesses	NFIP compliant?	N/A
RADON - FUTURE RESIDENTS/PROPERTY	Develop radon prevention standards and regulations for new housing including installation of ventilation systems in high hazard areas	NFIP compliant?	N/A
RADON - FUTURE RESIDENTS/PROPERTY	Encourage homeowners to install radon systems in home	NFIP compliant?	N/A
RADON - FUTURE RESIDENTS/PROPERTY	Encourage homeowners to test for radon	Priority	Medium
		Pot. Funding Sources	Local
		NFIP compliant?	Helps reduce risk
		Responsible Entity	City
		Estimated Cost	\$0 - \$25 K
		Timeframe	2025

TOOELE CITY MITIGATION STRATEGIES - 2021 TOOELE COUNTY PDMP

Hazard	Strategy	Strategy Informational Categories	Details
RADON - FUTURE RESIDENTS/PROPERTY	Require testing at existing facilities and homes during and/or immediately after construction	NFIP compliant?	N/A
RADON - FUTURE RESIDENTS/PROPERTY	Retrofit homes with radon ventilation systems	NFIP compliant?	N/A
RADON - FUTURE RESIDENTS/PROPERTY	Review and/or Develop Codes Ordinances and Policies	NFIP compliant?	N/A
SEVERE WEATHER - CURRENT RESIDENTS/PROPERTY	Conduct Outreach Activities Increase and Public Awareness (specify below in comments)	NFIP compliant?	N/A
SEVERE WEATHER - CURRENT RESIDENTS/PROPERTY	Protect Life Safety and Property Damage of Residential Buildings through applicable architecture and retrofits	NFIP compliant?	N/A
SEVERE WEATHER - CURRENT RESIDENTS/PROPERTY	Provide Weather-Related Information through Print Broadcast and Social Media	NFIP compliant?	N/A
SEVERE WEATHER - CURRENT RESIDENTS/PROPERTY	Reducing Impacts of Wind Hail Lightning through structural projects i.e. windbreaks	NFIP compliant?	N/A
SEVERE WEATHER - CURRENT RESIDENTS/PROPERTY	Retrofit Public Buildings and Critical Facilities/Infrastructure (specify below in comments)	Priority	Medium
		Pot. Funding Sources	Local
		NFIP compliant?	Helps reduce risk
		Responsible Entity	City
		Estimated Cost	\$250 K - \$500 K
		Timeframe	2025
SEVERE WEATHER - CURRENT RESIDENTS/PROPERTY	Review and/or Develop Codes Ordinances and Policies	NFIP compliant?	N/A
SEVERE WEATHER - CURRENT RESIDENTS/PROPERTY	Use natural environmental features as wind buffers in site design	NFIP compliant?	N/A
SEVERE WEATHER - FUTURE RESIDENTS/PROPERTY	Conduct Outreach Activities Increase and Public Awareness (specify below in comments)	NFIP compliant?	N/A
SEVERE WEATHER - FUTURE RESIDENTS/PROPERTY	Protect Life Safety and Property Damage of Residential Buildings through applicable architecture and retrofits	NFIP compliant?	N/A
SEVERE WEATHER - FUTURE RESIDENTS/PROPERTY	Provide Weather-Related Information through Print Broadcast and Social Media	NFIP compliant?	N/A
SEVERE WEATHER - FUTURE RESIDENTS/PROPERTY	Reducing Impacts of Wind Hail Lightning through structural projects i.e. windbreaks	NFIP compliant?	N/A
SEVERE WEATHER - FUTURE RESIDENTS/PROPERTY	Retrofit Public Buildings and Critical Facilities/Infrastructure (specify below in comments)	Priority	Medium
		Pot. Funding Sources	Local
		NFIP compliant?	Helps reduce risk
		Responsible Entity	City
		Estimated Cost	\$250 K - \$500 K
		Timeframe	2025

TOOELE CITY MITIGATION STRATEGIES - 2021 TOOELE COUNTY PDMP

Hazard	Strategy	Strategy Informational Categories	Details
SEVERE WEATHER - FUTURE RESIDENTS/PROPERTY	Review and/or Develop Codes Ordinances and Policies	NFIP compliant?	N/A
SEVERE WEATHER - FUTURE RESIDENTS/PROPERTY	Use natural environmental features as wind buffers in site design	NFIP compliant?	N/A
TORNADO - CURRENT RESIDENTS/PROPERTY	Appropriate engineering controls (such as deflection structures) are designed and installed to mitigate the hazard	NFIP compliant?	N/A
TORNADO - CURRENT RESIDENTS/PROPERTY	Conduct Outreach Activities to Increase Awareness of Tornado Risk (Specify below in comments)	NFIP compliant?	N/A
TORNADO - CURRENT RESIDENTS/PROPERTY	Develop an tornado codes or regulation prohibiting or limiting structures in known tornado areas	NFIP compliant?	N/A
TORNADO - CURRENT RESIDENTS/PROPERTY	Encourage Construction of Safe Rooms (Specify below in comments)	NFIP compliant?	N/A
TORNADO - CURRENT RESIDENTS/PROPERTY	Require Wind-Resistant Building Techniques	NFIP compliant?	N/A
TORNADO - CURRENT RESIDENTS/PROPERTY	Require Wind-Resistant Building Techniques	NFIP compliant?	N/A
TORNADO - FUTURE RESIDENTS/PROPERTY	Appropriate engineering controls (such as deflection structures) are designed and installed to mitigate the hazard	NFIP compliant?	N/A
TORNADO - FUTURE RESIDENTS/PROPERTY	Conduct Outreach Activities to Increase Awareness of Tornado Risk (Specify below in comments)	NFIP compliant?	N/A
TORNADO - FUTURE RESIDENTS/PROPERTY	Develop an tornado codes or regulation prohibiting or limiting structures in known tornado areas	NFIP compliant?	N/A
TORNADO - FUTURE RESIDENTS/PROPERTY	Encourage Construction of Safe Rooms (Specify below in comments)	NFIP compliant?	N/A
TORNADO - FUTURE RESIDENTS/PROPERTY	Require Wind-Resistant Building Techniques	NFIP compliant?	N/A
		NFIP compliant?	N/A
WILDFIRE - CURRENT RESIDENTS/PROPERTY	Address density and quantity of development as well emergency access landscaping and water supply	Priority	Medium
		Pot. Funding Sources	Local
		NFIP compliant?	Helps reduce risk
		Responsible Entity	City
		Estimated Cost	\$0 - \$25 K
		Timeframe	2025
WILDFIRE - CURRENT RESIDENTS/PROPERTY	Adopt and Enforce Building Codes and Development Standards	Pot. Funding Sources	Local
		Priority	High
		NFIP compliant?	Helps reduce risk
		Responsible Entity	City
		Estimated Cost	\$0 - \$25 K

TOOELE CITY MITIGATION STRATEGIES - 2021 TOOELE COUNTY PDMP

Hazard	Strategy	Strategy Informational Categories	Details
		Timeframe	2022
WILDFIRE - CURRENT RESIDENTS/PROPERTY	Develop a community wildfire preparedness plan	Priority	Medium
		NFIP compliant?	Helps reduce risk
		Pot. Funding Sources	County
		Responsible Entity	County
		Estimated Cost	\$0 - \$25 K
		Timeframe	2022
WILDFIRE - CURRENT RESIDENTS/PROPERTY	Develop wildfire and/or Wildland Urban Interface (WUI) codes or regulation prohibiting or limiting structures in known wildfire risk areas	Priority	Medium
		Pot. Funding Sources	Local
		NFIP compliant?	Helps reduce risk
		Responsible Entity	City
		Estimated Cost	\$0 - \$25 K
		Timeframe	2025
WILDFIRE - CURRENT RESIDENTS/PROPERTY	Educate Property Owners about Wildfire Mitigation Techniques (List specifics below in comments)	Pot. Funding Sources	Local
		Priority	High
		NFIP compliant?	Helps reduce risk
		Responsible Entity	City
		Estimated Cost	\$0 - \$25 K
		Timeframe	2022
WILDFIRE - CURRENT RESIDENTS/PROPERTY	Ensure newly constructed government-owned facilities are code compliant for wildfire hazards and promote the use of enhanced wildfire mitigation practices	Priority	Medium
		Pot. Funding Sources	Local
		NFIP compliant?	Helps reduce risk
		Responsible Entity	City
		Estimated Cost	\$0 - \$25 K
		Timeframe	2025

TOOELE CITY MITIGATION STRATEGIES - 2021 TOOELE COUNTY PDMP

Hazard	Strategy	Strategy Informational Categories	Details
WILDFIRE - CURRENT RESIDENTS/PROPERTY	Implement a Fuels Management Program	Priority	Medium
		Pot. Funding Sources	Local
		NFIP compliant?	Helps reduce risk
		Responsible Entity	City
		Estimated Cost	\$0 - \$25 K
		Timeframe	2022
WILDFIRE - CURRENT RESIDENTS/PROPERTY	Include considerations of wildfire hazards in land use public safety and other processes	Priority	Medium
		Pot. Funding Sources	Local
		NFIP compliant?	Helps reduce risk
		Responsible Entity	City
		Estimated Cost	\$0 - \$25 K
		Timeframe	2025
WILDFIRE - CURRENT RESIDENTS/PROPERTY	Mandate wildfire planning be incorporated into development and land use planning	NFIP compliant?	N/A
WILDFIRE - CURRENT RESIDENTS/PROPERTY	Mitigate Against Post-Wildfire Flooding via structural projects in drainage areas	Priority	Medium
		Pot. Funding Sources	Local
		NFIP compliant?	Helps reduce risk
		Responsible Entity	City
		Estimated Cost	\$25 K - \$50 K
		Timeframe	2024
WILDFIRE - CURRENT RESIDENTS/PROPERTY	Participate in Firewise Program	Pot. Funding Sources	Local
		Priority	High
		NFIP compliant?	Helps reduce risk
		Responsible Entity	City
		Estimated Cost	\$0 - \$25 K
		Timeframe	2022

TOOELE CITY MITIGATION STRATEGIES - 2021 TOOELE COUNTY PDMP

Hazard	Strategy	Strategy Informational Categories	Details
WILDFIRE - CURRENT RESIDENTS/PROPERTY	Promote conservation of open space or wildland-urban boundary zones to separate developed areas from high-hazard areas	Priority	Medium
		Pot. Funding Sources	Local
		NFIP compliant?	Helps reduce risk
		Responsible Entity	City
		Estimated Cost	\$0 - \$25 K
		Timeframe	2025
WILDFIRE - CURRENT RESIDENTS/PROPERTY	Set guidelines for annexation and service extensions in high-risk areas	Priority	Medium
		Pot. Funding Sources	Local
		NFIP compliant?	Helps reduce risk
		Responsible Entity	City
		Estimated Cost	\$0 - \$25 K
		Timeframe	2025
WILDFIRE - CURRENT RESIDENTS/PROPERTY	Structural and defensible space requirements	Pot. Funding Sources	Local
		Priority	High
		NFIP compliant?	Helps reduce risk
		Responsible Entity	City
		Estimated Cost	\$0 - \$25 K
		Timeframe	2022
WILDFIRE - CURRENT RESIDENTS/PROPERTY	Use zoning and/or a special wildfire overlay district to designate high-risk areas and specify the conditions for the use and development of specific areas	Priority	Medium
		Pot. Funding Sources	Local
		NFIP compliant?	Helps reduce risk
		Responsible Entity	City
		Estimated Cost	\$0 - \$25 K
		Timeframe	2025
		Pot. Funding Sources	Local

TOOELE CITY MITIGATION STRATEGIES - 2021 TOOELE COUNTY PDMP

Hazard	Strategy	Strategy Informational Categories	Details
WILDFIRE - FUTURE RESIDENTS/PROPERTY	Address density and quantity of development as well emergency access landscaping and water supply	Priority	High
		NFIP compliant?	Helps reduce risk
		Responsible Entity	City
		Estimated Cost	\$0 - \$25 K
		Timeframe	2022
WILDFIRE - FUTURE RESIDENTS/PROPERTY	Adopt and Enforce Building Codes and Development Standards	Pot. Funding Sources	Local
		Priority	High
		NFIP compliant?	Helps reduce risk
		Responsible Entity	City
		Estimated Cost	\$0 - \$25 K
WILDFIRE - FUTURE RESIDENTS/PROPERTY	Develop a community wildfire preparedness plan	Timeframe	2022
		Priority	Medium
		Pot. Funding Sources	Local
		NFIP compliant?	Helps reduce risk
		Responsible Entity	City
WILDFIRE - FUTURE RESIDENTS/PROPERTY	Develop wildfire and/or Wildland Urban Interface (WUI) codes or regulation prohibiting or limiting structures in known wildfire risk areas	Estimated Cost	\$0 - \$25 K
		Timeframe	2022
		Priority	Medium
		Pot. Funding Sources	Local
		NFIP compliant?	Helps reduce risk
WILDFIRE - FUTURE RESIDENTS/PROPERTY		Responsible Entity	City
		Estimated Cost	\$0 - \$25 K
		Timeframe	2025
		Priority	Medium
		Pot. Funding Sources	Local

TOOELE CITY MITIGATION STRATEGIES - 2021 TOOELE COUNTY PDMP

Hazard	Strategy	Strategy Informational Categories	Details
WILDFIRE - FUTURE RESIDENTS/PROPERTY	Educate Property Owners about Wildfire Mitigation Techniques (List specifics below in comments)	NFIP compliant?	Helps reduce risk
		Responsible Entity	City
		Estimated Cost	\$0 - \$25 K
		Timeframe	2022
WILDFIRE - FUTURE RESIDENTS/PROPERTY	Ensure newly constructed government-owned facilities are code compliant for wildfire hazards and promote the use of enhanced wildfire mitigation practices	Priority	Medium
		Pot. Funding Sources	Local
		NFIP compliant?	Helps reduce risk
		Responsible Entity	City
		Estimated Cost	\$0 - \$25 K
		Timeframe	2025
WILDFIRE - FUTURE RESIDENTS/PROPERTY	Implement a Fuels Management Program	Priority	Medium
		Pot. Funding Sources	Local
		NFIP compliant?	Helps reduce risk
		Responsible Entity	City
		Estimated Cost	\$0 - \$25 K
		Timeframe	2022
WILDFIRE - FUTURE RESIDENTS/PROPERTY	Include considerations of wildfire hazards in land use, public safety, and other processes	Priority	Medium
		Pot. Funding Sources	Local
		NFIP compliant?	Helps reduce risk
		Responsible Entity	City
		Estimated Cost	\$0 - \$25 K
		Timeframe	2022
WILDFIRE - FUTURE RESIDENTS/PROPERTY	Mandate wildfire planning be incorporated into development and land use planning	Priority	Medium
		Pot. Funding Sources	Local
		NFIP compliant?	Helps reduce risk

TOOELE CITY MITIGATION STRATEGIES - 2021 TOOELE COUNTY PDMP

Hazard	Strategy	Strategy Informational Categories	Details
WILDFIRE - FUTURE RESIDENTS/PROPERTY	Mandate wildfire planning be incorporated into development and land use planning	Responsible Entity	City
		Estimated Cost	\$0 - \$25 K
		Timeframe	2025
WILDFIRE - FUTURE RESIDENTS/PROPERTY	Mitigate Against Post-Wildfire Flooding via structural projects in drainage areas	Priority	Medium
		Pot. Funding Sources	Local
		NFIP compliant?	Helps reduce risk
		Responsible Entity	City
		Estimated Cost	\$25 K - \$50 K
		Timeframe	2024
WILDFIRE - FUTURE RESIDENTS/PROPERTY	Participate in Firewise Program	Pot. Funding Sources	Local
		Priority	High
		NFIP compliant?	Helps reduce risk
		Responsible Entity	City
		Estimated Cost	\$0 - \$25 K
		Timeframe	2022
WILDFIRE - FUTURE RESIDENTS/PROPERTY	Promote conservation of open space or wildland-urban boundary zones to separate developed areas from high-hazard areas	Priority	Medium
		Pot. Funding Sources	Local
		NFIP compliant?	Helps reduce risk
		Responsible Entity	City
		Estimated Cost	\$0 - \$25 K
		Timeframe	2022
WILDFIRE - FUTURE RESIDENTS/PROPERTY	Set guidelines for annexation and service extensions in high-risk areas	Priority	Medium
		Pot. Funding Sources	Local
		NFIP compliant?	Helps reduce risk
		Responsible Entity	City

TOOELE CITY MITIGATION STRATEGIES - 2021 TOOELE COUNTY PDMP

Hazard	Strategy	Strategy Informational Categories	Details
		Estimated Cost	\$0 - \$25 K
		Timeframe	2022
WILDFIRE - FUTURE RESIDENTS/PROPERTY	Structural and defensible space requirements	Pot. Funding Sources	Local
		Priority	High
		NFIP compliant?	Helps reduce risk
		Responsible Entity	City
		Estimated Cost	\$0 - \$25 K
		Timeframe	2022
WILDFIRE - FUTURE RESIDENTS/PROPERTY	Use zoning and/or a special wildfire overlay district to designate high-risk areas and specify the conditions for the use and development of specific areas	Priority	Medium
		Pot. Funding Sources	Local
		NFIP compliant?	Helps reduce risk
		Responsible Entity	City
		Estimated Cost	\$0 - \$25 K
		Timeframe	2022