

5.1 GRANTSVILLE CITY

5.1.2 Grantsville City - Future Development Risk - Critical Infrastructure

5.1.3 Grantsville City -Hazards

1. Avalanche
2. Dam Inundation
3. Earthquake
4. Erosion
5. Flood
6. Problem Soils
7. Wildfire

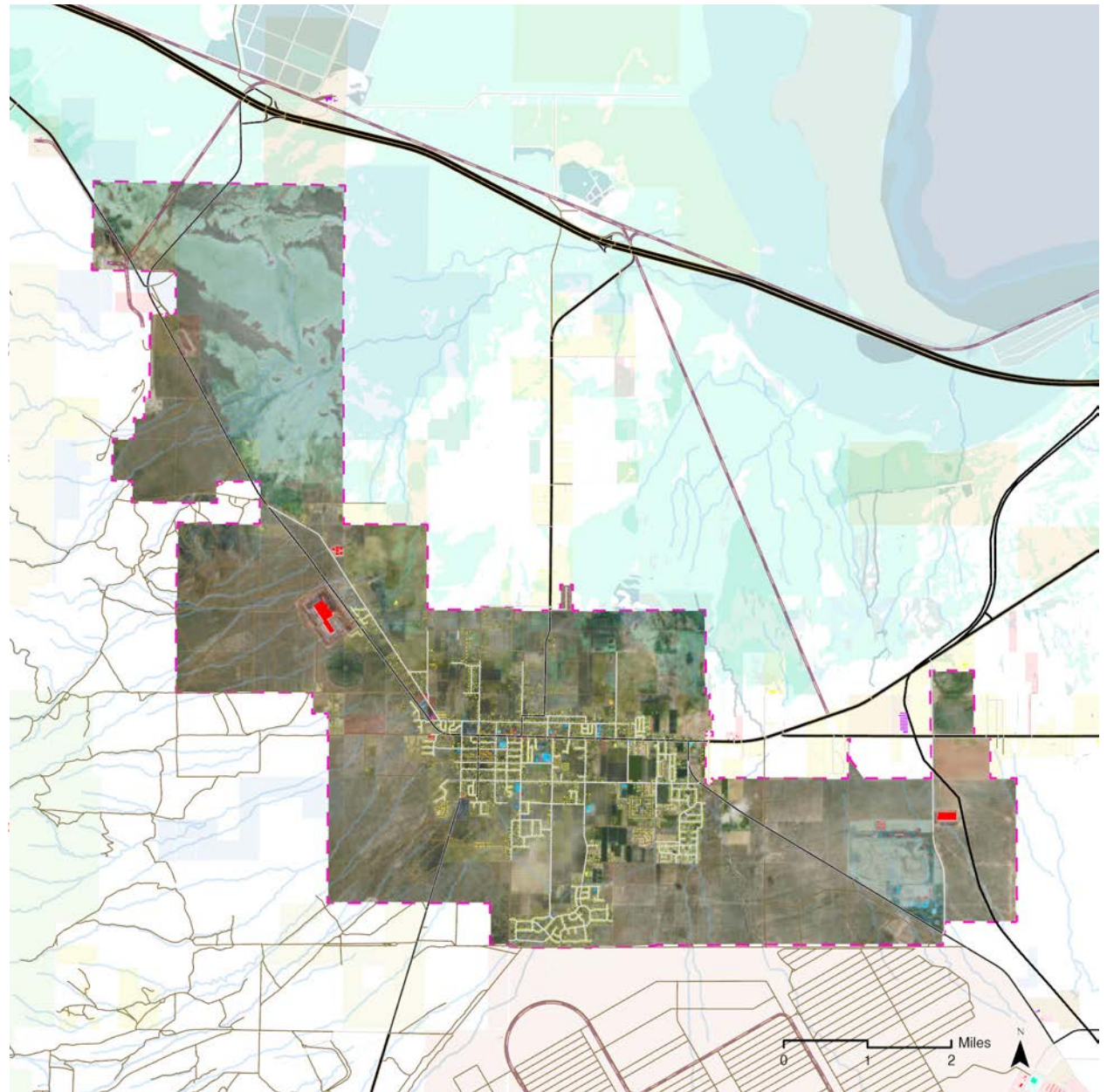
5.1.4 Grantsville City - Risk Assessment Results

1. Building Footprints - Structures
2. Point Data - Features
3. Parcel Data
4. Line Data
5. Area Data

5.1.5 Grantsville City - Mitigation Strategies

RISK SUMMARY

- Avalanche
- Dam Inundation
- Earthquake
- Erosion
- Flood
- Problem Soils
- Wildfire

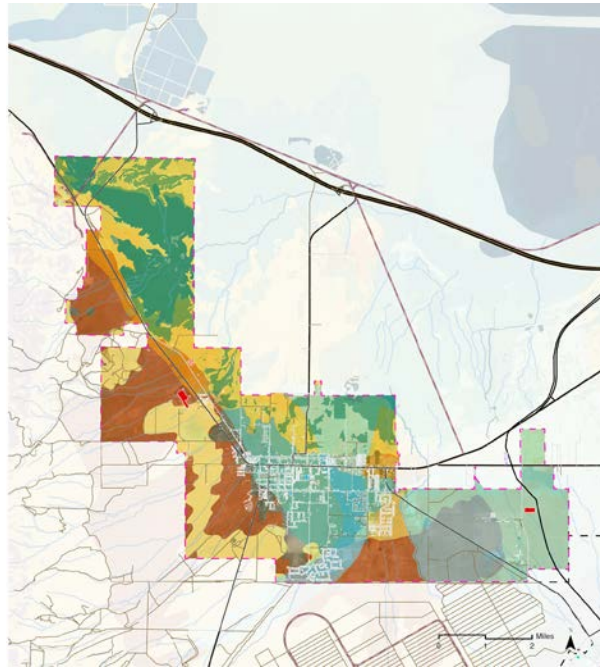


Aerial image of Grantsville City.

5.1.2 GRANTSVILLE CITY - FUTURE DEVELOPMENT RISK

RISK TO FUTURE DEVELOPMENT

New development is anticipated in 2 areas of Grantsville. The area just south of Durfee Street in Grantsville City is the first. Potential natural hazards in this area include unsuitable soils for dwellings, dam inundation, liquefaction, and flooding. The second is the areas west of State Road SR138 on the west side of town which are in the Wildland Urban Interface zone and FEMA flood zones.



RISK	TOTAL ACRES
Avalanche Terrain	10
Flood Dam Inundation	7,304
Flood Wetland/Riparian	4,511
Flood Soils Purdue	5,437
Flood USU Valley Bottom	33
SGID Engineering PS	723
Steep Slope	83
Wildfire	14,420
Dwellings Without Basements	16,849
Dwellings With Basements	16,849
Erosion Road Trail	5,666
Erosion Off Road Trail	432
Liquefaction	10,236

GRANTSVILLE CITY - RISK SUMMARY

Hazard Type	Probability of Occurrence	Population Impact	Property Impact	Economic Impact	Future Development Impact	Overall Risk
AVALANCHE	HIGH	LOW	LOW	LOW	LOW	LOW
DAM INUNDATION	LOW	HIGH	HIGH	HIGH	LOW	LOW
EARTHQUAKE	LOW	HIGH	HIGH	HIGH	MODERATE	MODERATE
EROSION	HIGH	LOW	HIGH	MEDIUM	MODERATE	MODERATE
FLOOD	HIGH	MODERATE	HIGH	HIGH	MODERATE	HIGH
PROBLEM SOILS	MODERATE	LOW	MODERATE	MODERATE	HIGH	MODERATE
WILDFIRE	HIGH	MODERATE	HIGH	HIGH	MODERATE	HIGH

5.1.3 GRANTSVILLE CITY - HAZARDS

AVALANCHE TERRAIN 10 AC

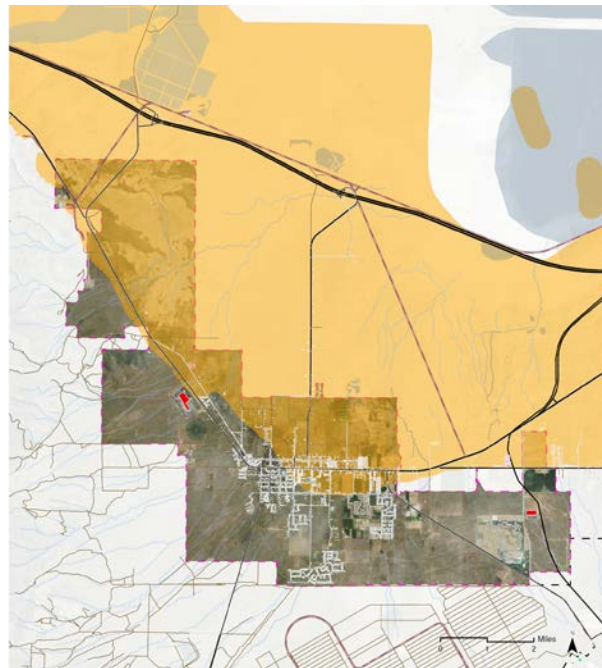
There is very limited avalanche terrain in Grantsville, consisting of small sections in the extreme northwest mountains. No significant losses to current development were discovered.



Avalanche Terrain

EARTHQUAKE LIQUEFACTION 10,236 AC

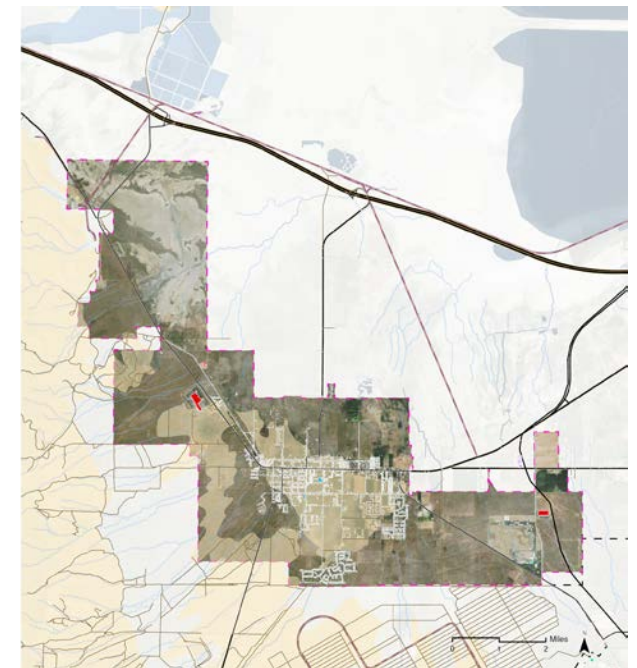
The entire northern half of the developed areas in Grantsville are at potential risk to liquefaction during an earthquake. This includes homes, businesses, roads and other infrastructure, and other amenities. Included in these potential risk areas are: 61 businesses, 5 churches, 21 local government buildings, and over 1,500 homes, and other facilities, and 30+ miles of roads.



Liquefaction Risk

EROSION_ROAD TRAIL 5,666 AC EROSION_OFF ROAD TRAIL 432 AC

Most of the developed areas in town have soils that are prone to erosion related to trails. However, though the vast majority of homes and infrastructure are constructed on erosive soils for roads and trails, these soils do not pose a direct risk to local residents or infrastructure.



Erosive Soils (Roads and Trails)

5.1.3 GRANTSVILLE CITY - HAZARDS

FLOOD_WETLAND/RIPARIAN 4,511 AC
FLOOD_SOILS PURDUE 5,437 AC
FLOOD_USU VALLEY BOTTOM 33 AC
DAM INNUNDATION

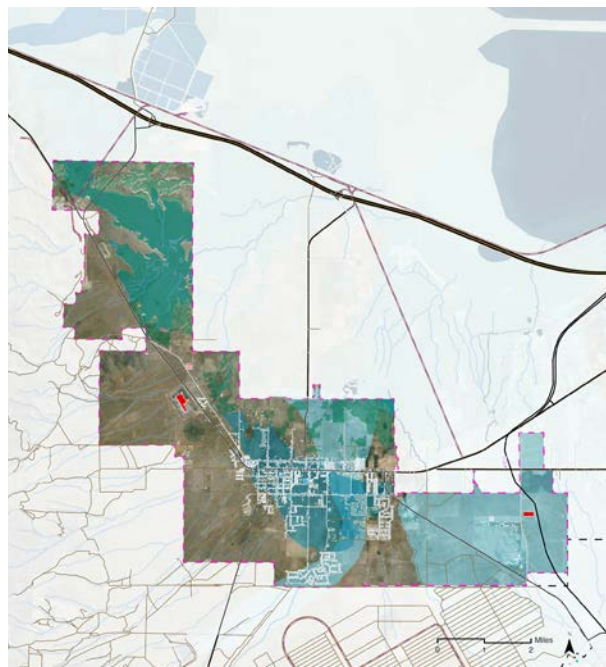
A significant number of residences, businesses and local infrastructure are at risk from flooding in town and northwest of town. Potential losses include over 40 miles of roads, 7 schools, 14 churches, 1 fire station, 17 local government buildings, 37 commerical buildings, around 2,300 homes and apartments, and other critical facilities.

PROBLEM ENGINEERING SOILS
DWELLINGS WITHOUT BASEMENTS 16,849 AC
DWELLINGS WITH BASEMENTS 16,849 AC
SGID_ENGINEERING PS 723 AC

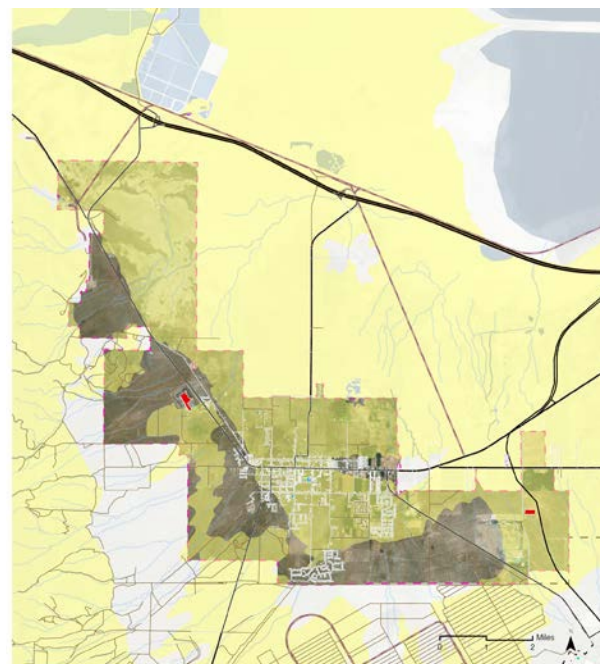
Over half of the area within Grantsville's municipal boundary consists of poor soils or those which could compromise structures if not properly engineered. However, modern building codes help to mitigate development in these soil types. As such, potential loss figures may not accurately depict true risk.

STEEP SLOPE 83 AC

Most of Grantsville is fairly flat, and only small sections of land northwest of town are too steep to build on. As such, potential losses could be considered negligible.



Flood_Dam Inundation
Flood_Great Salt Lake Flooding
Flood_Valley Bottom
Flood_Soils
Flood_FEMA 100 year floodplain
Flood_Riparian/Wetland



Problem Soils



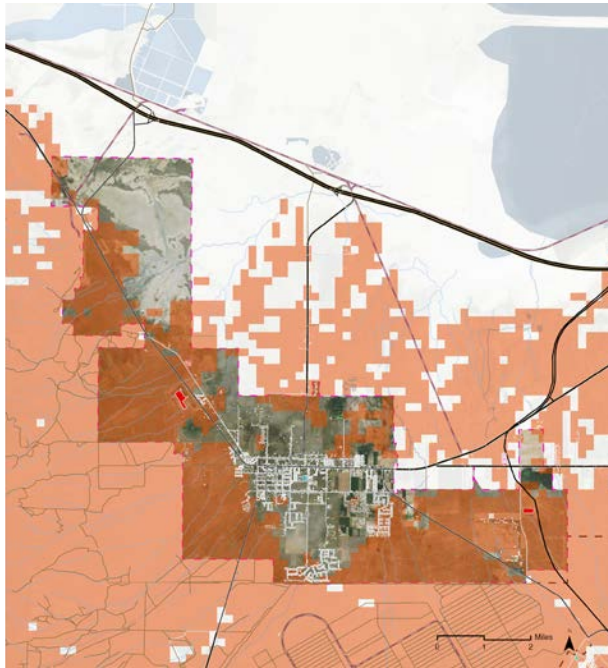
Steep Slopes >30%

5.1.3 GRANTSVILLE CITY - HAZARDS

WILDFIRE

14,420 AC

Grantsville has significant wildfire risk from the mountains and benches west and south of town, as well as the grassy fields in town. During dry years, high fuel loads in these areas could cause high wildfire risk. Potential losses include 88 commercial buildings, over 740 homes, 1 museum, 2 heliports, many drainages and wetlands, and other amenities.



Wildfire Hazard

5.1.4.1 GRANTSVILLE CITY | RISK ASSESMENT RESULTS | BUILDING FOOTPRINTS

GRANTSVILLE CITY - BUILDING FOOTPRINT - POTENTIAL LOSS TABLE			
Hazard	Category	Type	# of Buildings
DwellingsWithBasements	Commercial	Commercial	92
DwellingsWithBasements	Commercial	Grocery_Store	1
DwellingsWithBasements	Community Resource	Community Center	20
DwellingsWithBasements	Community Resource	Ed_Kto12	5
DwellingsWithBasements	Community Resource	Ed_PreK	1
DwellingsWithBasements	Community Resource	Museum	8
DwellingsWithBasements	Community Resource	PlaceofWorship	14
DwellingsWithBasements	Emergency Facility	FireStation	1
DwellingsWithBasements	Government Facility	LocalGov	22
DwellingsWithBasements	Government Facility	Post_Office	1
DwellingsWithBasements	Industrial	Industrial	5
DwellingsWithBasements	Other	Out	14
DwellingsWithBasements	Residential	Apartment	39
DwellingsWithBasements	Residential	Commercial_Residential	16
DwellingsWithBasements	Residential	Condominium	6
DwellingsWithBasements	Residential	Duplex	9
DwellingsWithBasements	Residential	Fourplex_Triplex	5
DwellingsWithBasements	Residential	Manufactured	138
DwellingsWithBasements	Residential	Res_LowIncome	15
DwellingsWithBasements	Residential	Res_MobileHome	126
DwellingsWithBasements	Residential	Res_Modular	10
DwellingsWithBasements	Residential	Residential	2535
DwellingsWithoutBasements	Commercial	Commercial	92
DwellingsWithoutBasements	Commercial	Grocery_Store	1

GRANTSVILLE CITY - BUILDING FOOTPRINT - POTENTIAL LOSS TABLE			
Hazard	Category	Type	# of Buildings
DwellingsWithoutBasements	Community Resource	Community Center	20
DwellingsWithoutBasements	Community Resource	Ed_Kto12	5
DwellingsWithoutBasements	Community Resource	Ed_PreK	1
DwellingsWithoutBasements	Community Resource	Museum	8
DwellingsWithoutBasements	Community Resource	PlaceofWorship	14
DwellingsWithoutBasements	Emergency Facility	FireStation	1
DwellingsWithoutBasements	Government Facility	LocalGov	22
DwellingsWithoutBasements	Government Facility	Post_Office	1
DwellingsWithoutBasements	Industrial	Industrial	5
DwellingsWithoutBasements	Other	Out	14
DwellingsWithoutBasements	Residential	Apartment	39
DwellingsWithoutBasements	Residential	Commercial_Residential	16
DwellingsWithoutBasements	Residential	Condominium	6
DwellingsWithoutBasements	Residential	Duplex	9
DwellingsWithoutBasements	Residential	Fourplex_Triplex	5
DwellingsWithoutBasements	Residential	Manufactured	138
DwellingsWithoutBasements	Residential	Res_LowIncome	15
DwellingsWithoutBasements	Residential	Res_MobileHome	126
DwellingsWithoutBasements	Residential	Res_Modular	10
DwellingsWithoutBasements	Residential	Residential	2535
Erosion_OffRoadTrail	Industrial	Industrial	1
Erosion_RoadTrail	Commercial	Commercial	37
Erosion_RoadTrail	Commercial	Grocery_Store	1
Erosion_RoadTrail	Community Resource	Community Center	1

5.1.4.1 GRANTSVILLE CITY I RISK ASSESMENT RESULTS I BUILDING FOOTPRINTS

GRANTSVILLE CITY - BUILDING FOOTPRINT - POTENTIAL LOSS TABLE			
Hazard	Category	Type	# of Buildings
Erosion_RoadTrail	Community Resource	Ed_Kto12	5
Erosion_RoadTrail	Community Resource	Ed_PreK	1
Erosion_RoadTrail	Community Resource	Museum	8
Erosion_RoadTrail	Community Resource	PlaceofWorship	14
Erosion_RoadTrail	Emergency Facility	FireStation	1
Erosion_RoadTrail	Government Facility	LocalGov	17
Erosion_RoadTrail	Government Facility	Post_Office	1
Erosion_RoadTrail	Industrial	Industrial	3
Erosion_RoadTrail	Other	Out	4
Erosion_RoadTrail	Residential	Apartment	39
Erosion_RoadTrail	Residential	Commercial_Residential	15
Erosion_RoadTrail	Residential	Condominium	6
Erosion_RoadTrail	Residential	Duplex	9
Erosion_RoadTrail	Residential	Fourplex_Triplex	5
Erosion_RoadTrail	Residential	Manufactured	113
Erosion_RoadTrail	Residential	Res_LowIncome	15
Erosion_RoadTrail	Residential	Res_MobileHome	108
Erosion_RoadTrail	Residential	Res_Modular	9
Erosion_RoadTrail	Residential	Residential	2109
Flood_DamInundation	Commercial	Commercial	78
Flood_DamInundation	Commercial	Grocery_Store	1
Flood_DamInundation	Community Resource	Community Center	21
Flood_DamInundation	Community Resource	Library	1

GRANTSVILLE CITY - BUILDING FOOTPRINT - POTENTIAL LOSS TABLE			
Hazard	Category	Type	# of Buildings
Flood_DamInundation	Community Resource	Museum	2
Flood_DamInundation	Community Resource	PlaceofWorship	4
Flood_DamInundation	Government Facility	LocalGov	7
Flood_DamInundation	Government Facility	LocalGov_Police	1
Flood_DamInundation	Other	Out	6
Flood_DamInundation	Residential	Apartment	18
Flood_DamInundation	Residential	Commercial_Residential	1
Flood_DamInundation	Residential	Duplex	2
Flood_DamInundation	Residential	Manufactured	40
Flood_DamInundation	Residential	Res_MobileHome	70
Flood_DamInundation	Residential	Residential	981
Flood_SoilsPurdue	Commercial	Commercial	37
Flood_SoilsPurdue	Commercial	Grocery_Store	1
Flood_SoilsPurdue	Community Resource	Ed_Kto12	5
Flood_SoilsPurdue	Community Resource	Ed_PreK	1
Flood_SoilsPurdue	Community Resource	Museum	8
Flood_SoilsPurdue	Community Resource	PlaceofWorship	14
Flood_SoilsPurdue	Emergency Facility	FireStation	1
Flood_SoilsPurdue	Government Facility	LocalGov	17
Flood_SoilsPurdue	Government Facility	Post_Office	1
Flood_SoilsPurdue	Industrial	Industrial	2
Flood_SoilsPurdue	Residential	Apartment	39

5.1.4.1 GRANTSVILLE CITY I RISK ASSESMENT RESULTS I BUILDING FOOTPRINTS

GRANTSVILLE CITY - BUILDING FOOTPRINT - POTENTIAL LOSS TABLE			
Hazard	Category	Type	# of Buildings
Flood_SoilsPurdue	Residential	Commercial_Residential	15
Flood_SoilsPurdue	Residential	Condominium	6
Flood_SoilsPurdue	Residential	Duplex	9
Flood_SoilsPurdue	Residential	Fourplex_Triplex	5
Flood_SoilsPurdue	Residential	Manufactured	92
Flood_SoilsPurdue	Residential	Res_LowIncome	15
Flood_SoilsPurdue	Residential	Res_MobileHome	115
Flood_SoilsPurdue	Residential	Res_Modular	9
Flood_SoilsPurdue	Residential	Residential	2028
Flood_Wetland/Riparian	Commercial	Commercial	3
Flood_Wetland/Riparian	Residential	Condominium	1
Flood_Wetland/Riparian	Residential	Res_MobileHome	8
Flood_Wetland/Riparian	Residential	Residential	28
Liquefaction	Commercial	Commercial	59
Liquefaction	Commercial	Grocery_Store	2
Liquefaction	Community Resource	Ed_Kto12	1
Liquefaction	Community Resource	Library	1
Liquefaction	Community Resource	PlaceofWorship	5
Liquefaction	Emergency Facility	MedicalFacility	1
Liquefaction	Emergency Facility	MedicalFacility_PlaceofWorship	1
Liquefaction	Government Facility	LocalGov	20
Liquefaction	Government Facility	LocalGov_Police	1
Liquefaction	Government Facility	Post_Office	1
Liquefaction	Industrial	Industrial	7

GRANTSVILLE CITY - BUILDING FOOTPRINT - POTENTIAL LOSS TABLE			
Hazard	Category	Type	# of Buildings
Liquefaction	Other	Out	9
Liquefaction	Residential	Apartment	27
Liquefaction	Residential	Commercial_Residential	13
Liquefaction	Residential	Condominium	6
Liquefaction	Residential	Duplex	10
Liquefaction	Residential	Fourplex_Triplex	3
Liquefaction	Residential	Manufactured	80
Liquefaction	Residential	Res_MobileHome	110
Liquefaction	Residential	Res_Modular	3
Liquefaction	Residential	Residential	1313
Wildfire	Commercial	Commercial	88
Wildfire	Community Resource	Community Center	17
Wildfire	Community Resource	Museum	1
Wildfire	Government Facility	LocalGov	2
Wildfire	Industrial	Industrial	2
Wildfire	Other	Out	11
Wildfire	Residential	Commercial_Residential	1
Wildfire	Residential	Manufactured	33
Wildfire	Residential	Res_MobileHome	2
Wildfire	Residential	Residential	714
SGID_EngineeringPS	Industrial	Industrial	2

5.1.4.2 GRANTSVILLE CITY I RISK ASSESMENT RESULTS I CRITICAL FACILITIES

GRANTSVILLE CITY - CRITICAL FACILITIES - POTENTIAL LOSS TABLE			
Hazard	Category	Type	# of Facilities
DwellingsWithBasements	Community	Cemetery	1
DwellingsWithBasements	Community	ED_K12	4
DwellingsWithBasements	Community	Ed_PreK	3
DwellingsWithBasements	Community	GroceryStore	2
DwellingsWithBasements	Community	PlaceofWorship	8
DwellingsWithBasements	Emergency	FireStation	1
DwellingsWithBasements	Emergency	HealthCareFacility	1
DwellingsWithBasements	Emergency		3
DwellingsWithBasements	Energy	FuelStation_Gas	3
DwellingsWithBasements	Energy	SubstationRegulator	2
DwellingsWithBasements	Energy	Well_OilGas	1
DwellingsWithBasements	Government	PostOffice	1
DwellingsWithBasements	Natural	SpringSeep	23
DwellingsWithBasements	Other	Tower_	1
DwellingsWithBasements	Other	Tower_	4
DwellingsWithBasements	Other	Tower_ MicrowaveService	1
DwellingsWithBasements	Recreation	Campground	1
DwellingsWithBasements	Recreation	CommunityCenter	2
DwellingsWithBasements	Recreation	HistoricSites	4
DwellingsWithBasements	Recreation	Museum	3
DwellingsWithBasements	Recreation	Park	1
DwellingsWithBasements			19
DwellingsWithBasements	Water	Dam	1
DwellingsWithBasements	Water	Well_Log	543
DwellingsWithBasements	Water	Well_NHD	7
DwellingsWithBasements	Water	Well_	2
DwellingsWithoutBasements	Community	Cemetery	1
DwellingsWithoutBasements	Community	ED_K12	4
DwellingsWithoutBasements	Community	Ed_PreK	3
DwellingsWithoutBasements	Community	GroceryStore	2
DwellingsWithoutBasements	Community	PlaceofWorship	8
DwellingsWithoutBasements	Emergency	FireStation	1
DwellingsWithoutBasements	Emergency	HealthCareFacility	1
DwellingsWithoutBasements	Emergency		2

GRANTSVILLE CITY - CRITICAL FACILITIES - POTENTIAL LOSS TABLE			
Hazard	Category	Type	# of Facilities
DwellingsWithoutBasements	Community	PlaceofWorship	8
DwellingsWithoutBasements	Emergency	FireStation	1
DwellingsWithoutBasements	Emergency	HealthCareFacility	1
DwellingsWithoutBasements	Emergency		3
DwellingsWithoutBasements	Energy	FuelStation_Gas	3
DwellingsWithoutBasements	Energy	SubstationRegulator	2
DwellingsWithoutBasements	Energy	Well_OilGas	1
DwellingsWithoutBasements	Government	PostOffice	1
DwellingsWithoutBasements	Natural	SpringSeep	23
DwellingsWithoutBasements	Other	Tower_	1
DwellingsWithoutBasements	Other	Tower_	4
DwellingsWithoutBasements	Other	Tower_ MicrowaveService	1
DwellingsWithoutBasements	Recreation	Campground	1
DwellingsWithoutBasements	Recreation	CommunityCenter	2
DwellingsWithoutBasements	Recreation	HistoricSites	4
DwellingsWithoutBasements	Recreation	Museum	3
DwellingsWithoutBasements	Recreation	Park	1
DwellingsWithoutBasements			19
DwellingsWithoutBasements	Water	Dam	1
DwellingsWithoutBasements	Water	Well_Log	543
DwellingsWithoutBasements	Water	Well_NHD	7
DwellingsWithoutBasements	Water	Well_	2
Erosion_RoadTrail	Community	Cemetery	1
Erosion_RoadTrail	Community	ED_K12	4
Erosion_RoadTrail	Community	Ed_PreK	3
Erosion_RoadTrail	Community	GroceryStore	2
Erosion_RoadTrail	Community	PlaceofWorship	8
Erosion_RoadTrail	Emergency	FireStation	1
Erosion_RoadTrail	Emergency	HealthCareFacility	1
Erosion_RoadTrail	Emergency		2

5.1.4.2 GRANTSVILLE CITY I RISK ASSESMENT RESULTS I CRITICAL FACILITIES

GRANTSVILLE CITY - CRITICAL FACILITIES - POTENTIAL LOSS TABLE			
Hazard	Category	Type	# of Facilities
Erosion_RoadTrail	Energy	FuelStation_Gas	2
Erosion_RoadTrail	Energy	SubstationRegulator	2
Erosion_RoadTrail	Energy	Well_OilGas	1
Erosion_RoadTrail	Government	PostOffice	1
Erosion_RoadTrail	Other	Tower_	2
Erosion_RoadTrail	Recreation	Campground	1
Erosion_RoadTrail	Recreation	HistoricSites	4
Erosion_RoadTrail	Recreation	Museum	3
Erosion_RoadTrail			19
Erosion_RoadTrail	Water	Dam	1
Erosion_RoadTrail	Water	Well_Log	194
Erosion_RoadTrail	Water	Well_NHD	2
Erosion_RoadTrail	Water	Well_	2
Flood_DamInundation	Community	GroceryStore	1
Flood_DamInundation	Community	Library	1
Flood_DamInundation	Community	PlaceofWorship	2
Flood_DamInundation	Emergency	LawEnforcement	1
Flood_DamInundation	Emergency		2
Flood_DamInundation	Energy	FuelStation_Gas	1
Flood_DamInundation	Government	LocalGovFacility	2
Flood_DamInundation	Other	Tower_	4
Flood_DamInundation	Recreation	CommunityCenter	2
Flood_DamInundation	Recreation	HistoricSites	1
Flood_DamInundation	Recreation	Museum	2
Flood_DamInundation			5
Flood_DamInundation		Heliport	2
Flood_DamInundation	Water	Well_Log	269
Flood_DamInundation	Water	Well_NHD	4
Flood_SoilsPurdue	Community	Cemetery	1
Flood_SoilsPurdue	Community	ED_K12	4
Flood_SoilsPurdue	Community	Ed_PreK	3

GRANTSVILLE CITY - CRITICAL FACILITIES - POTENTIAL LOSS TABLE			
Hazard	Category	Type	# of Facilities
Flood_SoilsPurdue	Community	GroceryStore	2
Flood_SoilsPurdue	Community	PlaceofWorship	8
Flood_SoilsPurdue	Emergency	FireStation	1
Flood_SoilsPurdue	Emergency	HealthCareFacility	1
Flood_SoilsPurdue	Emergency		2
Flood_SoilsPurdue	Energy	FuelStation_Gas	2
Flood_SoilsPurdue	Energy	SubstationRegulator	2
Flood_SoilsPurdue	Energy	Well_OilGas	1
Flood_SoilsPurdue	Government	PostOffice	1
Flood_SoilsPurdue	Natural	SpringSeep	13
Flood_SoilsPurdue	Other	Tower_	1
Flood_SoilsPurdue	Recreation	Campground	1
Flood_SoilsPurdue	Recreation	HistoricSites	4
Flood_SoilsPurdue	Recreation	Museum	3
Flood_SoilsPurdue			19
Flood_SoilsPurdue	Water	Well_Log	141
Flood_SoilsPurdue	Water	Well_NHD	1
Flood_SoilsPurdue	Water	Well_	2
Flood_USUValleyBottom	Water	Well_Log	21
Flood_Wetland/Riparian	Natural	SpringSeep	20
Flood_Wetland/Riparian	Other	Tower_ MicrowaveService	1
Flood_Wetland/Riparian			1
Flood_Wetland/Riparian	Water	Well_Log	203
Flood_Wetland/Riparian	Water	Well_NHD	3
Liquefaction	Community	ED_K12	1
Liquefaction	Community	GroceryStore	3
Liquefaction	Community	Library	1
Liquefaction	Community	PlaceofWorship	3
Liquefaction	Emergency	HealthCareFacility	2
Liquefaction	Emergency	LawEnforcement	1

5.1.4.2 GRANTSVILLE CITY | RISK ASSESMENT RESULTS | CRITICAL FACILITIES

GRANTSVILLE CITY - CRITICAL FACILITIES - POTENTIAL LOSS TABLE			
Hazard	Category	Type	# of Facilities
Liquefaction	Emergency		2
Liquefaction	Energy	FuelStation_Gas	3
Liquefaction	Energy	Well_OilGas	1
Liquefaction	Government	LocalGovFacility	2
Liquefaction	Government	PostOffice	1
Liquefaction	Natural	SpringSeep	23
Liquefaction	Other	Tower_	1
Liquefaction	Other	Tower_	1
Liquefaction	Other	Tower_ MicrowaveService	1
Liquefaction	Recreation	Campground	1
Liquefaction	Recreation	HistoricSites	1
Liquefaction			16
Liquefaction	Water	Well_Log	423
Liquefaction	Water	Well_NHD	6
Liquefaction	Water	Well_	2
Wildfire	Emergency		1
Wildfire	Energy	FuelStation_Gas	1
Wildfire	Energy	Well_OilGas	1
Wildfire	Natural	SpringSeep	10
Wildfire	Other	Tower_	7
Wildfire	Recreation	CommunityCenter	2
Wildfire	Recreation	Museum	1
Wildfire	Recreation	Park	1
Wildfire		Heliport	2
Wildfire	Water	Dam	1
Wildfire	Water	Well_Log	244
Wildfire	Water	Well_NHD	2

5.1.4.3 GRANTSVILLE CITY I RISK ASSESMENT RESULTS I PARCEL DATA

GRANTSVILLE CITY - RISK ASSESMENT - CRITICAL INFRASTRUCTURE PARCEL DATA					
Hazard	Infrastructure Category	Infrastructure Type	# of Parcels	Sum Parcel Acres	Sum Total Market Value
AvalanchTerrain	Other	Manufacture_Industry	1	192.7	\$469,239
DwellingsWithBasements	Commercial	Commercial	65	417.4	\$87,051,657
DwellingsWithBasements	Community_Resources	Cemetery	4	10.0	\$1,000
DwellingsWithBasements	Community_Resources	Comm_Center	1	512.5	\$7,031,669
DwellingsWithBasements	Community_Resources	Ed_Kto12	4	41.9	\$-
DwellingsWithBasements	Community_Resources	Ed_PreK/Ed_Kto12	3	10.6	\$-
DwellingsWithBasements	Community_Resources	Grocery_Store	1	1.1	\$1,440,509
DwellingsWithBasements	Community_Resources	Museum	1	0.5	\$-
DwellingsWithBasements	Community_Resources	Museum/Comm_Center	1	187.0	\$-
DwellingsWithBasements	Community_Resources	PlaceofWorship	8	25.5	\$387,345
DwellingsWithBasements	EmergencyServices	Ed_PreK/Museum	2	3.2	\$153,800
DwellingsWithBasements	EmergencyServices	Fire_Station/Emergency_Med	1	2.0	\$-
DwellingsWithBasements	EmergencyServices	Health_Care	2	5.7	\$1,152,836
DwellingsWithBasements	EmergencyServices	Police Department/Local_Gov_Fac	1	8.1	\$-
DwellingsWithBasements	Energy	Manufacture_Industry	1	0.6	\$253,469
DwellingsWithBasements	LocalGovernment	Local_Gov_Fac	2	4.1	\$-
DwellingsWithBasements	LocalGovernment	Post_Office	1	0.8	\$339,014
DwellingsWithBasements	Other	Manufacture_Industry	4	850.1	\$1,415,983
DwellingsWithBasements	Recreation	Open_Space	8	23.7	\$81,500
DwellingsWithBasements	Residential	Res_Munufacture_Mobile_Hookups	135	409.0	\$28,227,113
DwellingsWithBasements	Residential	Residential	2469	3,722.1	\$554,688,694

5.1.4.3 GRANTSVILLE CITY I RISK ASSESMENT RESULTS I PARCEL DATA

GRANTSVILLE CITY - RISK ASSESMENT - CRITICAL INFRASTRUCTURE PARCEL DATA					
Hazard	Infrastructure Category	Infrastructure Type	# of Parcels	Sum Parcel Acres	Sum Total Market Value
DwellingsWithBasements	Residential	Residential_Commercial	13	70.5	\$4,467,902
DwellingsWithBasements	Residential	Residential_MultiFamily	43	18.1	\$11,380,474
DwellingsWithBasements	SITLA	SITLA	4	-	\$-
DwellingsWithoutBasements	Commercial	Commercial	65	417.4	\$87,051,657
DwellingsWithoutBasements	Community_Resources	Cemetery	4	10.0	\$1,000
DwellingsWithoutBasements	Community_Resources	Comm_Center	1	512.5	\$7,031,669
DwellingsWithoutBasements	Community_Resources	Ed_Kto12	4	41.9	\$-
DwellingsWithoutBasements	Community_Resources	Ed_PreK/Ed_Kto12	3	10.6	\$-
DwellingsWithoutBasements	Community_Resources	Grocery_Store	1	1.1	\$1,440,509
DwellingsWithoutBasements	Community_Resources	Museum	1	0.5	\$-
DwellingsWithoutBasements	Community_Resources	Museum/Comm_Center	1	187.0	\$-
DwellingsWithoutBasements	Community_Resources	PlaceofWorship	8	25.5	\$387,345
DwellingsWithoutBasements	EmergencyServices	Ed_PreK/Museum	2	3.2	\$153,800
DwellingsWithoutBasements	EmergencyServices	Fire_Station/Emergency_Med	1	2.0	\$-
DwellingsWithoutBasements	EmergencyServices	Health_Care	2	5.7	\$1,152,836
DwellingsWithoutBasements	EmergencyServices	Police Department/Local_Gov_Fac	1	8.1	\$-
DwellingsWithoutBasements	Energy	Manufacture_Industry	1	0.6	\$253,469
DwellingsWithoutBasements	LocalGovernment	Local_Gov_Fac	2	4.1	\$-
DwellingsWithoutBasements	LocalGovernment	Post_Office	1	0.8	\$339,014
DwellingsWithoutBasements	Other	Manufacture_Industry	4	850.1	\$1,415,983
DwellingsWithoutBasements	Recreation	Open_Space	8	23.7	\$81,500

5.1.4.3 GRANTSVILLE CITY I RISK ASSESMENT RESULTS I PARCEL DATA

GRANTSVILLE CITY - RISK ASSESMENT - CRITICAL INFRASTRUCTURE PARCEL DATA					
Hazard	Infrastructure Category	Infrastructure Type	# of Parcels	Sum Parcel Acres	Sum Total Market Value
DwellingsWithoutBasements	Residential	Res_Munufacture_Mobile_Hookups	135	409.0	\$28,227,113
DwellingsWithoutBasements	Residential	Residential	2469	3,722.1	\$554,688,694
DwellingsWithoutBasements	Residential	Residential_Commercial	13	70.5	\$4,467,902
DwellingsWithoutBasements	Residential	Residential_MultiFamily	43	18.1	\$11,380,474
DwellingsWithoutBasements	SITLA	SITLA	4	-	\$-
Erosion_OffRoadTrail	Other	Manufacture_Industry	2	209.9	\$1,284,844
Erosion_OffRoadTrail	Residential	Res_Munufacture_Mobile_Hookups	1	44.9	\$728,689
Erosion_RoadTrail	Commercial	Commercial	49	251.2	\$52,675,650
Erosion_RoadTrail	Community_Resources	Cemetery	4	10.0	\$1,000
Erosion_RoadTrail	Community_Resources	Ed_Kto12	4	41.9	\$-
Erosion_RoadTrail	Community_Resources	Ed_PreK/Ed_Kto12	3	10.6	\$-
Erosion_RoadTrail	Community_Resources	Grocery_Store	1	1.1	\$1,440,509
Erosion_RoadTrail	Community_Resources	Museum	1	0.5	\$-
Erosion_RoadTrail	Community_Resources	PlaceofWorship	8	25.5	\$387,345
Erosion_RoadTrail	EmergencyServices	Ed_PreK/Museum	2	3.2	\$153,800
Erosion_RoadTrail	EmergencyServices	Fire_Station/Emergency_Med	1	2.0	\$-
Erosion_RoadTrail	EmergencyServices	Health_Care	2	5.7	\$1,152,836
Erosion_RoadTrail	EmergencyServices	Police Department/Local_Gov_Fac	1	8.1	\$-
Erosion_RoadTrail	Energy	Manufacture_Industry	1	0.6	\$253,469
Erosion_RoadTrail	LocalGovernment	Local_Gov_Fac	2	4.1	\$-

5.1.4.3 GRANTSVILLE CITY I RISK ASSESMENT RESULTS I PARCEL DATA

GRANTSVILLE CITY - RISK ASSESMENT - CRITICAL INFRASTRUCTURE PARCEL DATA					
Hazard	Infrastructure Category	Infrastructure Type	# of Parcels	Sum Parcel Acres	Sum Total Market Value
Erosion_RoadTrail	LocalGovernment	Post_Office	1	0.8	\$339,014
Erosion_RoadTrail	Other	Manufacture_Industry	3	210.1	\$1,415,983
Erosion_RoadTrail	Recreation	Open_Space	8	23.7	\$81,500
Erosion_RoadTrail	Residential	Res_Munufacture_Mobile_Hookups	116	205.3	\$21,314,150
Erosion_RoadTrail	Residential	Residential	2044	2,006.5	\$439,723,930
Erosion_RoadTrail	Residential	Residential_Commercial	11	8.2	\$2,786,783
Erosion_RoadTrail	Residential	Residential_MultiFamily	43	18.1	\$11,380,474
Erosion_RoadTrail	SITLA	SITLA	2	-	\$-
Flood_DamInundation	Commercial	Commercial	18	74.6	\$35,118,235
Flood_DamInundation	Community_Resources	Comm_Center	1	512.5	\$7,031,669
Flood_DamInundation	Community_Resources	Grocery_Store	1	0.7	\$749,215
Flood_DamInundation	Community_Resources	Library	1	1.0	\$-
Flood_DamInundation	Community_Resources	Museum/Comm_Center	1	187.0	\$-
Flood_DamInundation	Community_Resources	PlaceofWorship	2	11.1	\$45,375
Flood_DamInundation	DOD	DOD	1	-	\$-
Flood_DamInundation	EmergencyServices	Police Department/Local_Gov_Fac	1	8.1	\$-
Flood_DamInundation	Residential	Res_Munufacture_Mobile_Hookups	37	218.1	\$9,751,187
Flood_DamInundation	Residential	Residential	1055	1,259.9	\$248,626,987
Flood_DamInundation	Residential	Residential_Commercial	2	7.6	\$1,269,442
Flood_DamInundation	Residential	Residential_MultiFamily	6	4.5	\$2,469,855

5.1.4.3 GRANTSVILLE CITY I RISK ASSESMENT RESULTS I PARCEL DATA

GRANTSVILLE CITY - RISK ASSESMENT - CRITICAL INFRASTRUCTURE PARCEL DATA					
Hazard	Infrastructure Category	Infrastructure Type	# of Parcels	Sum Parcel Acres	Sum Total Market Value
Flood_SoilsPurdue	Commercial	Commercial	48	119.1	\$11,824,806
Flood_SoilsPurdue	Community_Resources	Cemetery	4	10.0	\$1,000
Flood_SoilsPurdue	Community_Resources	Ed_Kto12	4	41.9	\$-
Flood_SoilsPurdue	Community_Resources	Ed_PreK/Ed_Kto12	3	10.6	\$-
Flood_SoilsPurdue	Community_Resources	Grocery_Store	1	1.1	\$1,440,509
Flood_SoilsPurdue	Community_Resources	Museum	1	0.5	\$-
Flood_SoilsPurdue	Community_Resources	PlaceofWorship	8	25.5	\$387,345
Flood_SoilsPurdue	EmergencyServices	Ed_PreK/Museum	2	3.2	\$153,800
Flood_SoilsPurdue	EmergencyServices	Fire_Station/Emergency_Med	1	2.0	\$-
Flood_SoilsPurdue	EmergencyServices	Health_Care	2	5.7	\$1,152,836
Flood_SoilsPurdue	EmergencyServices	Police Department/Local_Gov_Fac	1	8.1	\$-
Flood_SoilsPurdue	Energy	Manufacture_Industry	1	0.6	\$253,469
Flood_SoilsPurdue	LocalGovernment	Local_Gov_Fac	2	4.1	\$-
Flood_SoilsPurdue	LocalGovernment	Post_Office	1	0.8	\$339,014
Flood_SoilsPurdue	Other	Manufacture_Industry	2	192.9	\$600,378
Flood_SoilsPurdue	Recreation	Open_Space	8	23.7	\$81,500
Flood_SoilsPurdue	Residential	Res_Munufacture_Mobile_Hookups	101	118.4	\$17,361,714
Flood_SoilsPurdue	Residential	Residential	1958	1,558.1	\$415,806,542
Flood_SoilsPurdue	Residential	Residential_Commercial	12	63.1	\$3,303,930
Flood_SoilsPurdue	Residential	Residential_MultiFamily	43	18.1	\$11,380,474
Flood_SoilsPurdue	SITLA	SITLA	2	-	\$-

5.1.4.3 GRANTSVILLE CITY I RISK ASSESMENT RESULTS I PARCEL DATA

GRANTSVILLE CITY - RISK ASSESMENT - CRITICAL INFRASTRUCTURE PARCEL DATA

Hazard	Infrastructure Category	Infrastructure Type	# of Parcels	Sum Parcel Acres	Sum Total Market Value
Flood_Wetland_Riparian	Commercial	Commercial	9	280.7	\$74,713,457
Flood_Wetland_Riparian	Community_Resources	Comm_Center	1	512.5	\$7,031,669
Flood_Wetland_Riparian	Community_Resources	Museum/Comm_Center	1	187.0	\$-
Flood_Wetland_Riparian	DOD	DOD	1	-	\$-
Flood_Wetland_Riparian	LocalGovernment	Local_Gov_Fac	2	-	\$-
Flood_Wetland_Riparian	Other	Manufacture_Industry	3	872.7	\$469,239
Flood_Wetland_Riparian	Residential	Res_Munufacture_Mobile_Hookups	18	115.7	\$4,752,258
Flood_Wetland_Riparian	Residential	Residential	330	1,922.5	\$79,898,629
Flood_Wetland_Riparian	Residential	Residential_Commercial	1	54.9	\$517,147
Flood_Wetland_Riparian	Residential	Residential_MultiFamily	1	-	\$177,416
Flood_Wetland_Riparian	SITLA	SITLA	2	-	\$-
Liquefaction	Commercial	Commercial	60	369.8	\$56,868,928
Liquefaction	Community_Resources	Ed_Kto12	1	21.5	\$-
Liquefaction	Community_Resources	Ed_PreK/Ed_Kto12	1	5.2	\$-
Liquefaction	Community_Resources	Grocery_Store	2	1.8	\$2,189,724
Liquefaction	Community_Resources	Library	1	1.0	\$-
Liquefaction	Community_Resources	PlaceofWorship	3	16.8	\$-
Liquefaction	EmergencyServices	Fire_Station/Emergency_Med	1	2.0	\$-
Liquefaction	EmergencyServices	Health_Care	1	1.5	\$740,766
Liquefaction	EmergencyServices	Health_Care/PlaceofWorship	1	1.0	\$902,573
Liquefaction	EmergencyServices	Police Department/Local_Gov_Fac	1	8.1	\$-

5.1.4.3 GRANTSVILLE CITY I RISK ASSESMENT RESULTS I PARCEL DATA

GRANTSVILLE CITY - RISK ASSESMENT - CRITICAL INFRASTRUCTURE PARCEL DATA					
Hazard	Infrastructure Category	Infrastructure Type	# of Parcels	Sum Parcel Acres	Sum Total Market Value
Liquefaction	Energy	Manufacture_Industry	1	0.6	\$253,469
Liquefaction	LocalGovernment	Post_Office	1	0.8	\$339,014
Liquefaction	Other	Manufacture_Industry	3	849.9	\$1,284,844
Liquefaction	Recreation	Open_Space	6	19.0	\$500
Liquefaction	Residential	Res_Munufacture_Mobile_Hookups	68	273.5	\$15,988,340
Liquefaction	Residential	Residential	1313	2,240.7	\$257,556,135
Liquefaction	Residential	Residential_Commercial	10	65.4	\$3,520,574
Liquefaction	Residential	Residential_MultiFamily	37	10.7	\$7,383,724
Liquefaction	SITLA	SITLA	2	-	\$-
RMRS_WildFireHP_2020	Commercial	Commercial	18	380.5	\$75,121,328
RMRS_WildFireHP_2020	Community_Resources	Comm_Center	1	512.5	\$7,031,669
RMRS_WildFireHP_2020	Community_Resources	Ed_Kto12	1	9.8	\$-
RMRS_WildFireHP_2020	Community_Resources	Museum/Comm_Center	1	187.0	\$-
RMRS_WildFireHP_2020	Community_Resources	PlaceofWorship	1	3.5	\$-
RMRS_WildFireHP_2020	DOD	DOD	1	-	\$-
RMRS_WildFireHP_2020	LocalGovernment	Local_Gov_Fac	1	25.0	\$-
RMRS_WildFireHP_2020	Other	Manufacture_Industry	3	249.9	\$1,284,844
RMRS_WildFireHP_2020	Residential	Res_Munufacture_Mobile_Hookups	24	197.8	\$7,017,286
RMRS_WildFireHP_2020	Residential	Residential	800	2,335.6	\$221,937,374
RMRS_WildFireHP_2020	Residential	Residential_Commercial	2	62.3	\$1,681,119
RMRS_WildFireHP_2020	Residential	Residential_MultiFamily	2	0.7	\$297,554

5.1.4.3 GRANTSVILLE CITY I RISK ASSESMENT RESULTS I PARCEL DATA

GRANTSVILLE CITY - RISK ASSESSMENT - CRITICAL INFRASTRUCTURE PARCEL DATA					
Hazard	Infrastructure Category	Infrastructure Type	# of Parcels	Sum Parcel Acres	Sum Total Market Value
RMRS_WildFireHP_2020	SITLA	SITLA	3	-	\$-
SGID_EngineeringPS	Other	Manufacture_Industry	3	849.9	\$1,284,844
SGID_EngineeringPS	SITLA	SITLA	1	-	\$-
SGID_EngineeringPS	StateofUtah	StateofUtah	1	-	\$-
SteepSlope	Commercial	Commercial	1	208.8	\$41,000,000
SteepSlope	Other	Manufacture_Industry	1	192.7	\$469,239
SteepSlope	Residential	Res_Munufacture_Mobile_Hookups	1	44.9	\$728,689

5.1.4.4 GRANTSVILLE CITY I RISK ASSESMENT RESULTS I LINE DATA

GRANTSVILLE CITY - RISK ASSESMENT - CRITICAL INFRASTRUCTURE LINE DATA				
HAZARD	INFRASTRUCTURE CATEGORY	INFRASTRUCTURE TYPE	# OF SEGMENTS	SUM SEGMENT LENGTH (MILES)
DwellingsWithBasements	Energy	ElectricPowerTransmissionLine	6	20.1
DwellingsWithBasements	Energy	Pipeline_NaturalGas	7	15.1
DwellingsWithBasements	Natural	StreamRiver_Ephemeral	54	42.3
DwellingsWithBasements	Natural	StreamRiver_Intermittent	13	8.0
DwellingsWithBasements	Natural	StreamRiver_Perennial	2	0.2
DwellingsWithBasements	Recreation	Trail_RoadConcurrent	3	2.0
DwellingsWithBasements	Transportation	Road	124	21.7
DwellingsWithBasements	Transportation	Road_A	29	14.9
DwellingsWithBasements	Transportation	Road_B	10	2.4
DwellingsWithBasements	Transportation	Road_C	340	49.2
DwellingsWithBasements	Transportation	Road_D	44	9.7
DwellingsWithBasements	Transportation	Road_P	1	0.1
DwellingsWithBasements	Transportation	Road_X	4	1.1
DwellingsWithBasements	Water	Canal_ArtificialPath	2	0.1
DwellingsWithBasements	Water	Canal_Ditch	1	0.6
DwellingsWithBasements	Water	Connector	30	15.3
Erosion_RoadTrail	Energy	ElectricPowerTransmissionLine	4	17.0
Erosion_RoadTrail	Energy	Pipeline_NaturalGas	2	9.9
Erosion_RoadTrail	Natural	StreamRiver_Ephemeral	21	16.9
Erosion_RoadTrail	Natural	StreamRiver_Intermittent	5	3.9
Erosion_RoadTrail	Recreation	Trail_RoadConcurrent	3	2.0

5.1.4.4 GRANTSVILLE CITY I RISK ASSESMENT RESULTS I LINE DATA

GRANTSVILLE CITY - RISK ASSESMENT - CRITICAL INFRASTRUCTURE LINE DATA				
HAZARD	INFRASTRUCTURE CATEGORY	INFRASTRUCTURE TYPE	# OF SEGMENTS	SUM SEGMENT LENGTH (MILES)
Erosion_RoadTrail	Transportation	Road	107	18.4
Erosion_RoadTrail	Transportation	Road_A	24	4.5
Erosion_RoadTrail	Transportation	Road_B	2	0.4
Erosion_RoadTrail	Transportation	Road_C	266	36.7
Erosion_RoadTrail	Transportation	Road_D	27	5.4
Erosion_RoadTrail	Transportation	Road_P	1	0.1
Erosion_RoadTrail	Transportation	Road_X	3	1.0
Erosion_RoadTrail	Water	Connector	9	7.3
Flood_DamInundation	Energy	ElectricPowerTransmissionLine	2	10.7
Flood_DamInundation	Energy	Pipeline_NaturalGas	4	7.1
Flood_DamInundation	Natural	StreamRiver_Ephemeral	15	13.9
Flood_DamInundation	Natural	StreamRiver_Intermittent	5	3.6
Flood_DamInundation	Natural	StreamRiver_Perennial	2	0.2
Flood_DamInundation	Transportation	Road	50	6.2
Flood_DamInundation	Transportation	Road_A	9	6.5
Flood_DamInundation	Transportation	Road_B	6	2.0
Flood_DamInundation	Transportation	Road_C	135	20.6
Flood_DamInundation	Transportation	Road_D	18	7.3
Flood_DamInundation	Transportation	Road_X	1	0.1
Flood_DamInundation	Water	Canal_ArtificialPath	1	0.0

5.1.4.4 GRANTSVILLE CITY I RISK ASSESMENT RESULTS I LINE DATA

GRANTSVILLE CITY - RISK ASSESMENT - CRITICAL INFRASTRUCTURE LINE DATA				
HAZARD	INFRASTRUCTURE CATEGORY	INFRASTRUCTURE TYPE	# OF SEGMENTS	SUM SEGMENT LENGTH (MILES)
Flood_DamInundation	Water	Canal_Ditch	1	0.6
Flood_DamInundation	Water	Connector	9	4.3
Flood_SoilsPurdue	Energy	ElectricPowerTransmissionLine	5	19.0
Flood_SoilsPurdue	Energy	Pipeline_NaturalGas	4	13.8
Flood_SoilsPurdue	Natural	StreamRiver_Ephemeral	16	8.4
Flood_SoilsPurdue	Natural	StreamRiver_Intermittent	3	2.1
Flood_SoilsPurdue	Transportation	Road	61	5.8
Flood_SoilsPurdue	Transportation	Road_A	21	4.2
Flood_SoilsPurdue	Transportation	Road_C	242	32.6
Flood_SoilsPurdue	Transportation	Road_D	1	0.4
Flood_SoilsPurdue	Transportation	Road_P	1	0.1
Flood_SoilsPurdue	Transportation	Road_X	3	1.0
Flood_SoilsPurdue	Water	Connector	9	7.8
Flood_USUValleyBottom	Natural	StreamRiver_Ephemeral	1	1.2
Flood_USUValleyBottom	Natural	StreamRiver_Perennial	2	0.2
Flood_USUValleyBottom	Water	Canal_ArtificialPath	1	0.0
Flood_USUValleyBottom	Water	Canal_Ditch	1	0.6
Flood_Wetland_Riparian	Energy	ElectricPowerTransmissionLine	5	20.1
Flood_Wetland_Riparian	Energy	Pipeline_NaturalGas	5	14.8
Flood_Wetland_Riparian	Natural	StreamRiver_Ephemeral	74	51.4

5.1.4.4 GRANTSVILLE CITY I RISK ASSESMENT RESULTS I LINE DATA

GRANTSVILLE CITY - RISK ASSESMENT - CRITICAL INFRASTRUCTURE LINE DATA				
HAZARD	INFRASTRUCTURE CATEGORY	INFRASTRUCTURE TYPE	# OF SEGMENTS	SUM SEGMENT LENGTH (MILES)
Flood_Wetland_Riparian	Natural	StreamRiver_Intermittent	13	8.0
Flood_Wetland_Riparian	Natural	StreamRiver_Perennial	2	0.2
Flood_Wetland_Riparian	Recreation	Trail_RoadConcurrent	4	3.2
Flood_Wetland_Riparian	Transportation	Road	30	9.6
Flood_Wetland_Riparian	Transportation	Road_A	8	11.8
Flood_Wetland_Riparian	Transportation	Road_B	2	1.2
Flood_Wetland_Riparian	Transportation	Road_C	68	15.8
Flood_Wetland_Riparian	Transportation	Road_D	20	9.1
Flood_Wetland_Riparian	Transportation	Road_X	3	0.2
Flood_Wetland_Riparian	Water	Canal_ArtificialPath	3	0.1
Flood_Wetland_Riparian	Water	Canal_Ditch	1	0.6
Flood_Wetland_Riparian	Water	Connector	40	18.3
Liquefaction	Energy	ElectricPowerTransmissionLine	4	16.3
Liquefaction	Energy	Pipeline_NaturalGas	5	14.8
Liquefaction	Natural	StreamRiver_Ephemeral	25	18.0
Liquefaction	Natural	StreamRiver_Intermittent	6	2.4
Liquefaction	Natural	StreamRiver_Perennial	2	0.2
Liquefaction	Recreation	Trail_RoadConcurrent	1	1.0
Liquefaction	Transportation	Road	18	3.8
Liquefaction	Transportation	Road_A	25	8.6

5.1.4.4 GRANTSVILLE CITY I RISK ASSESMENT RESULTS I LINE DATA

GRANTSVILLE CITY - RISK ASSESMENT - CRITICAL INFRASTRUCTURE LINE DATA				
HAZARD	INFRASTRUCTURE CATEGORY	INFRASTRUCTURE TYPE	# OF SEGMENTS	SUM SEGMENT LENGTH (MILES)
Liquefaction	Transportation	Road_B	9	2.1
Liquefaction	Transportation	Road_C	160	23.8
Liquefaction	Transportation	Road_D	26	4.8
Liquefaction	Transportation	Road_P	1	0.1
Liquefaction	Transportation	Road_X	5	1.2
Liquefaction	Water	Canal_ArtificialPath	3	0.1
Liquefaction	Water	Canal_Ditch	1	0.6
Liquefaction	Water	Connector	20	11.3
RMRS_WildFireHP_2020	Energy	ElectricPowerTransmissionLine	4	18.1
RMRS_WildFireHP_2020	Energy	Pipeline_NaturalGas	6	14.1
RMRS_WildFireHP_2020	Natural	StreamRiver_Ephemeral	57	45.0
RMRS_WildFireHP_2020	Natural	StreamRiver_Intermittent	9	5.5
RMRS_WildFireHP_2020	Natural	StreamRiver_Perennial	2	0.2
RMRS_WildFireHP_2020	Recreation	Trail_RoadConcurrent	10	4.9
RMRS_WildFireHP_2020	Transportation	Road	116	23.8
RMRS_WildFireHP_2020	Transportation	Road_A	10	12.5
RMRS_WildFireHP_2020	Transportation	Road_B	10	2.4
RMRS_WildFireHP_2020	Transportation	Road_C	143	23.4
RMRS_WildFireHP_2020	Transportation	Road_D	106	22.7
RMRS_WildFireHP_2020	Transportation	Road_X	1	0.1

5.1.4.4 GRANTSVILLE CITY I RISK ASSESMENT RESULTS I LINE DATA

GRANTSVILLE CITY - RISK ASSESMENT - CRITICAL INFRASTRUCTURE LINE DATA				
HAZARD	INFRASTRUCTURE CATEGORY	INFRASTRUCTURE TYPE	# OF SEGMENTS	SUM SEGMENT LENGTH (MILES)
RMRS_WildFireHP_2020	Water	Canal_ArtificialPath	3	0.1
RMRS_WildFireHP_2020	Water	Canal_Ditch	1	0.6
RMRS_WildFireHP_2020	Water	Connector	33	15.6
SGID_EngineeringPS	Energy	ElectricPowerTransmissionLine	1	2.0
SGID_EngineeringPS	Energy	Pipeline_NaturalGas	1	2.9
SGID_EngineeringPS	Natural	StreamRiver_Ephemeral	1	0.1
SGID_EngineeringPS	Recreation	Trail_RoadConcurrent	4	2.1
SGID_EngineeringPS	Transportation	Road	3	1.2
SGID_EngineeringPS	Transportation	Road_A	1	1.4
SGID_EngineeringPS	Transportation	Road_B	1	0.4
SGID_EngineeringPS	Transportation	Road_D	19	2.4
SGID_EngineeringPS	Water	Connector	5	4.0
SteepSlope	Natural	StreamRiver_Ephemeral	1	2.5
SteepSlope	Transportation	Road	2	0.9
SteepSlope	Transportation	Road_D	1	0.3
SteepSlope	Water	Connector	1	1.9

5.1.4.5 GRANTSVILLE CITY | RISK ASSESMENT RESULTS | AREA DATA

GRANTSVILLE CITY - RISK ASSESMENT - CRITICAL INFRASTRUCTURE AREAS DATA				
HAZARD	INFRASTRUCTURE CATEGORY	INFRASTRUCTURE TYPE	# OF SEGMENTS	SUM OF AREAS (ACRES)
AvalanchTerrain	Agricultural	GrazingAllotment	1	3,661.3
AvalanchTerrain	Water	RetailCulinaryWaterServiceArea	2	20,468.1
DwellingsWithBasements	Agricultural	AgricultureWRLA_DryCrop	27	312.8
DwellingsWithBasements	Agricultural	AgricultureWRLA_Food	119	1,024.5
DwellingsWithBasements	Agricultural	AgricultureWRLU_Sprinkler	343	3,847.7
DwellingsWithBasements	Agricultural	AgricultureWRLU_SubIrrigated	13	238.1
DwellingsWithBasements	Agricultural	GrazingAllotment	6	11,411.4
DwellingsWithBasements	Natural	LakePond_Intermittent	7	3.3
DwellingsWithBasements	Natural	LakePond_Perennial	7	22.6
DwellingsWithBasements	Natural	Riparian	4	59.8
DwellingsWithBasements	Natural	Wetland	261	4,484.8
DwellingsWithBasements	Natural	Wetland_SwampMarsh	1	24.0
DwellingsWithBasements	Water	GWPZone_1	2	1.4
DwellingsWithBasements	Water	GWPZone_2	3	56.8
DwellingsWithBasements	Water	GWPZone_3	3	237.1
DwellingsWithBasements	Water	GWPZone_4	3	1,019.6
DwellingsWithBasements	Water	RetailCulinaryWaterServiceArea	4	20,470.5
Erosion_RoadTrail	Agricultural	AgricultureWRLA_DryCrop	10	55.5
Erosion_RoadTrail	Agricultural	AgricultureWRLA_Food	44	174.4
Erosion_RoadTrail	Agricultural	AgricultureWRLU_Sprinkler	200	1,903.9

5.1.4.5 GRANTSVILLE CITY I RISK ASSESMENT RESULTS I AREA DATA

GRANTSVILLE CITY - Risk ASSESMENT - CRITICAL INFRASTRUCTURE AREAS DATA				
HAZARD	INFRASTRUCTURE CATEGORY	INFRASTRUCTURE TYPE	# OF SEGMENTS	SUM OF AREAS (ACRES)
Erosion_RoadTrail	Agricultural	GrazingAllotment	4	10,711.7
Erosion_RoadTrail	Natural	LakePond_Perennial	4	2.0
Erosion_RoadTrail	Natural	Wetland	37	118.3
Erosion_RoadTrail	Water	GWPZone_1	2	1.4
Erosion_RoadTrail	Water	GWPZone_2	3	56.8
Erosion_RoadTrail	Water	GWPZone_3	3	237.1
Erosion_RoadTrail	Water	GWPZone_4	3	1,019.6
Erosion_RoadTrail	Water	RetailCulinaryWaterServiceArea	2	20,468.1
Flood_DamInundation	Agricultural	AgricultureWRLA_DryCrop	10	123.1
Flood_DamInundation	Agricultural	AgricultureWRLA_Food	42	570.3
Flood_DamInundation	Agricultural	AgricultureWRLU_Sprinkler	109	1,626.5
Flood_DamInundation	Agricultural	AgricultureWRLU_SubIrrigated	11	211.1
Flood_DamInundation	Agricultural	GrazingAllotment	1	6,971.2
Flood_DamInundation	Natural	LakePond_Perennial	6	22.0
Flood_DamInundation	Natural	Riparian	2	54.9
Flood_DamInundation	Natural	Wetland	116	774.0
Flood_DamInundation	Natural	Wetland_SwampMarsh	1	24.0
Flood_DamInundation	Water	GWPZone_1	1	0.7
Flood_DamInundation	Water	GWPZone_2	1	8.0
Flood_DamInundation	Water	GWPZone_3	1	36.5

5.1.4.5 GRANTSVILLE CITY I RISK ASSESMENT RESULTS I AREA DATA

GRANTSVILLE CITY - RISK ASSESMENT - CRITICAL INFRASTRUCTURE AREAS DATA				
HAZARD	INFRASTRUCTURE CATEGORY	INFRASTRUCTURE TYPE	# OF SEGMENTS	SUM OF AREAS (ACRES)
Flood_DamInundation	Water	GWPZone_4	2	975.0
Flood_DamInundation	Water	RetailCulinaryWaterServiceArea	3	20,407.5
Flood_SoilsPurdue	Agricultural	AgricultureWRLA_DryCrop	8	67.7
Flood_SoilsPurdue	Agricultural	AgricultureWRLA_Food	36	204.0
Flood_SoilsPurdue	Agricultural	AgricultureWRLU_Sprinkler	192	1,648.7
Flood_SoilsPurdue	Agricultural	GrazingAllotment	4	11,332.2
Flood_SoilsPurdue	Natural	LakePond_Perennial	4	2.0
Flood_SoilsPurdue	Natural	Wetland	48	3,324.7
Flood_SoilsPurdue	Water	GWPZone_1	1	0.7
Flood_SoilsPurdue	Water	GWPZone_2	1	36.2
Flood_SoilsPurdue	Water	GWPZone_3	1	163.9
Flood_SoilsPurdue	Water	GWPZone_4	1	911.6
Flood_SoilsPurdue	Water	RetailCulinaryWaterServiceArea	1	20,405.1
Flood_USUValleyBottom	Agricultural	AgricultureWRLU_SubIrrigated	3	52.6
Flood_USUValleyBottom	Natural	Riparian	1	51.3
Flood_USUValleyBottom	Natural	Wetland	13	104.0
Flood_USUValleyBottom	Natural	Wetland_SwampMarsh	1	24.0
Flood_USUValleyBottom	Water	RetailCulinaryWaterServiceArea	1	20,405.1
Flood_Wetland_Riparian	Agricultural	AgricultureWRLA_DryCrop	13	240.7
Flood_Wetland_Riparian	Agricultural	AgricultureWRLA_Food	46	858.1

5.1.4.5 GRANTSVILLE CITY I RISK ASSESMENT RESULTS I AREA DATA

GRANTSVILLE CITY - RISK ASSESMENT - CRITICAL INFRASTRUCTURE AREAS DATA				
HAZARD	INFRASTRUCTURE CATEGORY	INFRASTRUCTURE TYPE	# OF SEGMENTS	SUM OF AREAS (ACRES)
Flood_Wetland_Riparian	Agricultural	AgricultureWRLU_Sprinkler	118	2,196.2
Flood_Wetland_Riparian	Agricultural	AgricultureWRLU_SubIrrigated	13	238.1
Flood_Wetland_Riparian	Agricultural	GrazingAllotment	4	11,332.2
Flood_Wetland_Riparian	Natural	LakePond_Intermittent	6	3.2
Flood_Wetland_Riparian	Natural	LakePond_Perennial	6	22.0
Flood_Wetland_Riparian	Natural	Riparian	5	61.1
Flood_Wetland_Riparian	Natural	Wetland	275	4,502.7
Flood_Wetland_Riparian	Natural	Wetland_SwampMarsh	1	24.0
Flood_Wetland_Riparian	Water	GWPZone_2	1	8.0
Flood_Wetland_Riparian	Water	GWPZone_3	1	36.5
Flood_Wetland_Riparian	Water	GWPZone_4	1	63.5
Flood_Wetland_Riparian	Water	RetailCulinaryWaterServiceArea	2	20,468.1
Liquefaction	Agricultural	AgricultureWRLA_DryCrop	15	203.6
Liquefaction	Agricultural	AgricultureWRLA_Food	92	869.5
Liquefaction	Agricultural	AgricultureWRLU_Sprinkler	203	2,358.1
Liquefaction	Agricultural	AgricultureWRLU_SubIrrigated	13	238.1
Liquefaction	Agricultural	GrazingAllotment	3	4,361.0
Liquefaction	Natural	LakePond_Intermittent	8	3.6
Liquefaction	Natural	LakePond_Perennial	5	21.1
Liquefaction	Natural	Riparian	4	59.8

5.1.4.5 GRANTSVILLE CITY I RISK ASSESMENT RESULTS I AREA DATA

GRANTSVILLE CITY - Risk ASSESMENT - CRITICAL INFRASTRUCTURE AREAS DATA				
HAZARD	INFRASTRUCTURE CATEGORY	INFRASTRUCTURE TYPE	# OF SEGMENTS	SUM OF AREAS (ACRES)
Liquefaction	Natural	Wetland	205	4,400.9
Liquefaction	Natural	Wetland_SwampMarsh	1	24.0
Liquefaction	Water	GWPZone_1	1	0.7
Liquefaction	Water	GWPZone_2	1	36.2
Liquefaction	Water	GWPZone_3	1	163.9
Liquefaction	Water	GWPZone_4	1	911.6
Liquefaction	Water	RetailCulinaryWaterServiceArea	3	20,468.6
RMRS_WildFireHP_2020	Agricultural	AgricultureWRLA_DryCrop	25	364.7
RMRS_WildFireHP_2020	Agricultural	AgricultureWRLA_Food	67	840.3
RMRS_WildFireHP_2020	Agricultural	AgricultureWRLU_Sprinkler	112	2,018.4
RMRS_WildFireHP_2020	Agricultural	AgricultureWRLU_SubIrrigated	6	175.3
RMRS_WildFireHP_2020	Agricultural	GrazingAllotment	5	10,796.2
RMRS_WildFireHP_2020	Natural	LakePond_Intermittent	6	1.6
RMRS_WildFireHP_2020	Natural	LakePond_Perennial	4	21.1
RMRS_WildFireHP_2020	Natural	Riparian	2	54.9
RMRS_WildFireHP_2020	Natural	Wetland	172	4,175.1
RMRS_WildFireHP_2020	Natural	Wetland_SwampMarsh	1	24.0
RMRS_WildFireHP_2020	Water	GWPZone_1	2	1.4
RMRS_WildFireHP_2020	Water	GWPZone_2	2	20.6
RMRS_WildFireHP_2020	Water	GWPZone_3	2	73.3

5.1.4.5 GRANTSVILLE CITY I RISK ASSESMENT RESULTS I AREA DATA

GRANTSVILLE CITY - RISK ASSESMENT - CRITICAL INFRASTRUCTURE AREAS DATA				
HAZARD	INFRASTRUCTURE CATEGORY	INFRASTRUCTURE TYPE	# OF SEGMENTS	SUM OF AREAS (ACRES)
RMRS_WildFireHP_2020	Water	GWPZone_4	3	1,019.6
RMRS_WildFireHP_2020	Water	RetailCulinaryWaterServiceArea	4	20,470.5
SGID_EngineeringPS	Agricultural	GrazingAllotment	1	3,661.3
SGID_EngineeringPS	Natural	Wetland	11	2,101.0
SGID_EngineeringPS	Water	RetailCulinaryWaterServiceArea	2	20,468.1
SteepSlope	Agricultural	GrazingAllotment	1	3,661.3
SteepSlope	Natural	Wetland	2	25.0
SteepSlope	Water	RetailCulinaryWaterServiceArea	2	20,468.1

5.1.5 GRANTSVILLE CITY - MITIGATION STRATEGIES

GRANTSVILLE MITIGATION STRATEGIES - 2021 TOOELE COUNTY PDMP

Hazard	Strategy	Strategy Informational Categories	Details
DAM FAILURE - CURRENT RESIDENTS/PROPERTY	Develop ordinances to prohibit or limit critical facilities and/or structures in dam inundation areas	Priority	Low
DAM FAILURE - CURRENT RESIDENTS/PROPERTY	Ensure new critical facilities and infrastructure are not built in dam inundation areas	Priority	Low
DAM FAILURE - CURRENT RESIDENTS/PROPERTY	Relocate government-owned facilities located near high risk dam failures	Priority	Low
DAM FAILURE - FUTURE RESIDENTS/PROPERTY	Dam is privately owned, failure would impact property north of the flood control ditch.	N/A	N/A
DAM FAILURE - FUTURE RESIDENTS/PROPERTY	Develop ordinances to prohibit or limit critical facilities and/or structures in dam inundation areas	Priority	Low
DAM FAILURE - FUTURE RESIDENTS/PROPERTY	Ensure new critical facilities and infrastructure are not built in dam inundation areas	Priority	Low
DAM FAILURE - FUTURE RESIDENTS/PROPERTY	Relocate government-owned facilities located near high risk dam failures	Priority	Low
DROUGHT - CURRENT RESIDENTS/PROPERTY	Designate and or preserve adequate source water protection zones or groundwater recharge areas	Priority	High
		Responsible Entity	City
DROUGHT - CURRENT RESIDENTS/PROPERTY	Educate Residents on Water Saving Techniques (list event details in "comments")	Priority	Medium
		Estimated Cost	\$0 - \$25 K
DROUGHT - CURRENT RESIDENTS/PROPERTY	Enforce codes ordinances statues and laws that promote drought resiliency and water conservation practices	Priority	Medium
DROUGHT - CURRENT RESIDENTS/PROPERTY	Expand and Improve Existing Potable Water Systems	Priority	High
		Responsible Entity	City
		Estimated Cost	\$1 Mil +
DROUGHT - CURRENT RESIDENTS/PROPERTY	Improve Public Water Infrastructure and Management with Water Provider	Priority	High
		Estimated Cost	\$1 Mil +
DROUGHT - CURRENT RESIDENTS/PROPERTY	Monitor Water Supply for leaks system failures inefficiencies etc. via monitoring system and audits	Priority	High
		Estimated Cost	\$100 K - \$250 K
DROUGHT - CURRENT RESIDENTS/PROPERTY	Plan and Prepare for Drought via emergency planning and warning systems	Priority	Low
		Responsible Entity	County
DROUGHT - CURRENT RESIDENTS/PROPERTY	Retrofit Water Supply Systems to handle current and new growth	Priority	High
		Responsible Entity	City

GRANTSVILLE MITIGATION STRATEGIES - 2021 TOOELE COUNTY PDMP

Hazard	Strategy	Strategy Informational Categories	Details
		Estimated Cost	\$1 Mil +
DROUGHT - CURRENT RESIDENTS/PROPERTY	Update and adopt drought ordinances	Priority	Medium
DROUGHT - FUTURE RESIDENTS/PROPERTY	Designate and or preserve adequate source water protection zones or groundwater recharge areas	Priority	High
DROUGHT - FUTURE RESIDENTS/PROPERTY	Educate Residents on Water Saving Techniques (list event details in "comments")	Priority	Low
DROUGHT - FUTURE RESIDENTS/PROPERTY	Expand and Improve Existing Potable Water Systems	Priority	High
		Estimated Cost	\$1 Mil +
DROUGHT - FUTURE RESIDENTS/PROPERTY	Improve Public Water Infrastructure and Management with Water Provider	Priority	High
		Estimated Cost	\$1 Mil +
DROUGHT - FUTURE RESIDENTS/PROPERTY	Monitor Water Supply for leaks system failures inefficiencies etc. via monitoring system and audits	Priority	High
		Estimated Cost	\$1 Mil +
DROUGHT - FUTURE RESIDENTS/PROPERTY	Retrofit Water Supply Systems to handle current and new growth	Priority	High
		Estimated Cost	\$1 Mil +
DROUGHT - FUTURE RESIDENTS/PROPERTY	Update and adopt drought ordinances	Priority	Low
EARTHQUAKE - CURRENT RESIDENTS/PROPERTY	Building Code Adoption and Enforcement	Priority	Medium
EARTHQUAKE - CURRENT RESIDENTS/PROPERTY	Conduct Building Safety Inspections	Priority	Low
EARTHQUAKE - CURRENT RESIDENTS/PROPERTY	Establish a "green infrastructure" program to link manage and expand existing parks preserves greenways etc	Priority	High
		Estimated Cost	\$1 Mil +
EARTHQUAKE - CURRENT RESIDENTS/PROPERTY	Increase Awareness and Education of Earthquakes through an educational event	Priority	Low
EARTHQUAKE - CURRENT RESIDENTS/PROPERTY	Local Planning such as critical facilities planning financial incentives creating a safety committee emergency planning etc	Priority	High
		Estimated Cost	\$1 Mil +
EARTHQUAKE - CURRENT RESIDENTS/PROPERTY	Retrofit Critical Facilities and Infrastructure to Withstand Earthquakes (list specifics in "comments" section)	Priority	Low
		Estimated Cost	\$0 - \$25 K
EARTHQUAKE - FUTURE RESIDENTS/PROPERTY	Conduct Building Safety Inspections	Priority	High

GRANTSVILLE MITIGATION STRATEGIES - 2021 TOOELE COUNTY PDMP

Hazard	Strategy	Strategy Informational Categories	Details
EARTHQUAKE - FUTURE RESIDENTS/PROPERTY	Establish a "green infrastructure" program to link manage and expand existing parks preserves greenways etc	Priority	High
		Estimated Cost	\$1 Mil +
EARTHQUAKE - FUTURE RESIDENTS/PROPERTY	Local Planning such as critical facilities planning financial incentives creating a safety committee emergency planning etc	Priority	High
EARTHQUAKE - FUTURE RESIDENTS/PROPERTY	Retrofit Critical Facilities and Infrastructure to Withstand Earthquakes (list specifics in "comments" section)	Priority	Low
		Estimated Cost	\$250 K - \$500 K
FLOOD - CURRENT RESIDENTS/PROPERTY	Conduct Regular Maintenance for Drainage Systems and Flood Control Structures	Priority	High
		Estimated Cost	\$50 K - \$100 K
FLOOD - CURRENT RESIDENTS/PROPERTY	Floodproof At-Risk Residential and Non-Residential Structures	Priority	High
		Estimated Cost	\$100 K - \$250 K
FLOOD - CURRENT RESIDENTS/PROPERTY	Improve Stormwater Drainage Capacity	Priority	High
		Estimated Cost	\$250 K - \$500 K
FLOOD - CURRENT RESIDENTS/PROPERTY	Protect and Restore Natural Flood Mitigation Features through natural greenway protection and restoration	Priority	High
		Estimated Cost	\$100 K - \$250 K
FLOOD - CURRENT RESIDENTS/PROPERTY	Protect Infrastructure such as roads bridges wastewater treatment etc	Priority	High
		Estimated Cost	\$1 Mil +
FLOOD - FUTURE RESIDENTS/PROPERTY	Conduct Regular Maintenance for Drainage Systems and Flood Control Structures	Priority	High
		Estimated Cost	\$100 K - \$250 K
FLOOD - FUTURE RESIDENTS/PROPERTY	Floodproof At-Risk Residential and Non-Residential Structures	Priority	High
		Estimated Cost	\$250 K - \$500 K
FLOOD - FUTURE RESIDENTS/PROPERTY	Improve Stormwater Drainage Capacity	Priority	High
		Estimated Cost	\$100 K - \$250 K
FLOOD - FUTURE RESIDENTS/PROPERTY	Protect and Restore Natural Flood Mitigation Features through natural greenway protection and restoration	Priority	High
		Estimated Cost	\$100 K - \$250 K

GRANTSVILLE MITIGATION STRATEGIES - 2021 TOOELE COUNTY PDMP

Hazard	Strategy	Strategy Informational Categories	Details
FLOOD - FUTURE RESIDENTS/PROPERTY	Protect Infrastructure such as roads bridges wastewater treatment etc	Priority	High
		Estimated Cost	\$1 Mil +
SEVERE WEATHER - CURRENT RESIDENTS/PROPERTY	Conduct Outreach Activities Increase and Public Awareness (specify below in comments)	Priority	Low
SEVERE WEATHER - CURRENT RESIDENTS/PROPERTY	Protect Life Safety and Property Damage of Residential Buildings through applicable architecture and retrofits	Priority	High
		Estimated Cost	\$1 Mil +
SEVERE WEATHER - CURRENT RESIDENTS/PROPERTY	Reducing Impacts of Wind Hail Lightning through structural projects i.e. windbreaks	Priority	High
		Estimated Cost	\$1 Mil +
SEVERE WEATHER - CURRENT RESIDENTS/PROPERTY	Use natural environmental features as wind buffers in site design	Priority	Low
SEVERE WEATHER - FUTURE RESIDENTS/PROPERTY	Conduct Outreach Activities Increase and Public Awareness (specify below in comments)	Priority	Low
SEVERE WEATHER - FUTURE RESIDENTS/PROPERTY	Protect Life Safety and Property Damage of Residential Buildings through applicable architecture and retrofits	Priority	Medium
SEVERE WEATHER - FUTURE RESIDENTS/PROPERTY	Reducing Impacts of Wind Hail Lightning through structural projects i.e. windbreaks	Priority	High
SEVERE WEATHER - FUTURE RESIDENTS/PROPERTY	Retrofit Public Buildings and Critical Facilities/Infrastructure (specify below in comments)	Priority	Medium
SEVERE WEATHER - FUTURE RESIDENTS/PROPERTY	Use natural environmental features as wind buffers in site design	Priority	Low
WILDFIRE - CURRENT RESIDENTS/PROPERTY	Address density and quantity of development as well emergency access landscaping and water supply	Priority	High
WILDFIRE - CURRENT RESIDENTS/PROPERTY	Adopt and Enforce Building Codes and Development Standards	Priority	High
WILDFIRE - CURRENT RESIDENTS/PROPERTY	Develop wildfire and/or Wildland Urban Interface (WUI) codes or regulation prohibiting or limiting structures in known wildfire risk areas	Priority	Medium
		Estimated Cost	\$0 - \$25 K
WILDFIRE - CURRENT RESIDENTS/PROPERTY	Educate Property Owners about Wildfire Mitigation Techniques (List specifics below in comments)	Priority	Medium
WILDFIRE - CURRENT RESIDENTS/PROPERTY	Ensure newly constructed government-owned facilities are code compliant for wildfire hazards and promote the use of enhanced wildfire mitigation practices	Priority	High
		Estimated Cost	\$250 K - \$500 K
WILDFIRE - CURRENT RESIDENTS/PROPERTY	Include considerations of wildfire hazards in land use public safety and other processes	Priority	Low
WILDFIRE - CURRENT RESIDENTS/PROPERTY	Participate in Firewise Program	Priority	High
WILDFIRE - CURRENT RESIDENTS/PROPERTY	Use zoning and/or a special wildfire overlay district to designate high-risk areas and specify the conditions for the use and development of specific areas	Priority	Low